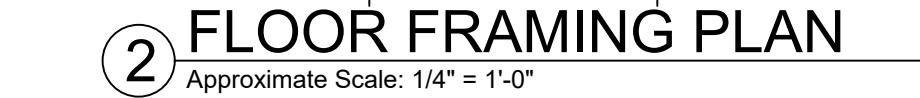


PROJECT #:  
JAWORKS DBC  
.., 224-2001









## SUMMARY OF REACTIONS AT FOOTING POINTS FOR LRFD LOAD COMBINATION

MARK	SIZE	MATERIAL	CAMBER (INCH)	REMARKS
SIB100	HSS 3X3X $\frac{3}{16}$ "	A1085	—	MAIN STRUCTURE BOX FRAME
SIB101	C8X11.5	A36	—	BOTTOM DECK FRAME
SIB102	C6X8.2	A36	—	BOTTOM DECK FRAME

MARK	SIZE	TYPE	BASE CONNECTION	TOP CONNECTION	REMARKS
SIC100	HSS 3x3x $\frac{3}{16}$ "	A1085	REFER TO DETAIL 6/S2	REFER TO DETAIL 2/S2	-

MARK	MAX OPENING	COMBINATION	FRAME SIZE	REMARKS
SIH100	UP TO 6'-0"	A1085	HSS 3x3x $\frac{3}{16}$ "	REFER TO DETAIL 9/S2

Graphic Scale

0ft 10ft

1/4 Inch = 1 Foot

4-25-2024



Expires 10/31/2025

PROJECT #:  
AQUAWORKS DBC  
INC. 224-2001

Structural details for this project are for illustration only. They are not drawn to scale unless noted otherwise. Contractor must verify all dimensions before fabrication or construction. Do not scale drawings.