


Description: CWP 3ph UG Repl - RCR 16A Southshore Tap
Service Address: RCR 16 & 16A to 24490 UNCOMPAHGRE RD
City: Oak Creek **State:** CO
Contact Name: YAMPA VALLEY ELECTRIC ASSN
Contact #: Larry B. / (970)871-2282




Substation: 36 - Stagecoach **Township:** 3N
Feeder: Lynx Pass **Range:** 84W
County: ROUTT **Section:** 5

W.O. Number: 39274
WO Type: New Construction
SO Number:
Created Date: 08/20/2021
Staked By: LARRY J BALL
Staked Date: 01/02/2024

Comments: Install CIC to C4 - Empty Duct & Pull 1/0 URD C4 to 10462 (Bore (3) 2" under creek) - FO duct & vault system installed with Electric in same trench (Stub & Cap ends in air next to electric vaults)
SO Comments:

Pole #	Span	Ø	*	Pole	Pri Wire	Primary	Transformer	Ground	Guy	Lead	Anchor	Conduit	Trench	Sec Wire	Secondary	Misc	
2934		ABC	E			(3) UM6-1		UM48-2C									
			E			(6) UM6-10											
			E			UM33											
			E			(3) UM6-22											
			R			(3) UM6-1											
			C			(3) UM6-1											
Replace Direct Bury & move to property line easement																	
C1	573	ABC	C		(3) UD11	(6) UM6-1		UM48-2C					UR 2-S(54"D)			(573) UM50-PP-2.0(FO)	
Prev: 2934		L/A: 0		C		(3) UM6-22										UM-13	
			C			UM33											
			C			(6) UM6-10											
Trench & Backfill - Face C1 to Road																	
C2	812	ABC	C		(3) UD11	UM33		UM48-2C					UR 2-S(54"D)			(812) UM50-PP-2.0(FO)	
Prev: C1		L/A: -1		C		(6) UM6-1										UM-13	
			C			(3) UM6-22											
			C			(6) UM6-10											
Trench & Backfill - Face C2 to Road																	
C3	771	ABC	C		(3) UD11	(3) UM6-22		UM48-2C					UR 2-S(54"D)			UM-13	
Prev: C2		L/A: 0		C		UM33										(771) UM50-PP-2.0(FO)	
			C			(6) UM6-10											
			C			(6) UM6-1											
Trench & Backfill - Face C3 to Road																	
C4	737	ABC	C		(3) UD11	(6) UM6-10		UM48-2C					UR 2-S(54"D)			UM-13	
Prev: C3		L/A: 105		C		(3) UM6-22										(737) UM50-PP-2.0(FO)	
			C			UM33											
			C			(6) UM6-1											
Trench & Backfill - Face C4 to South																	

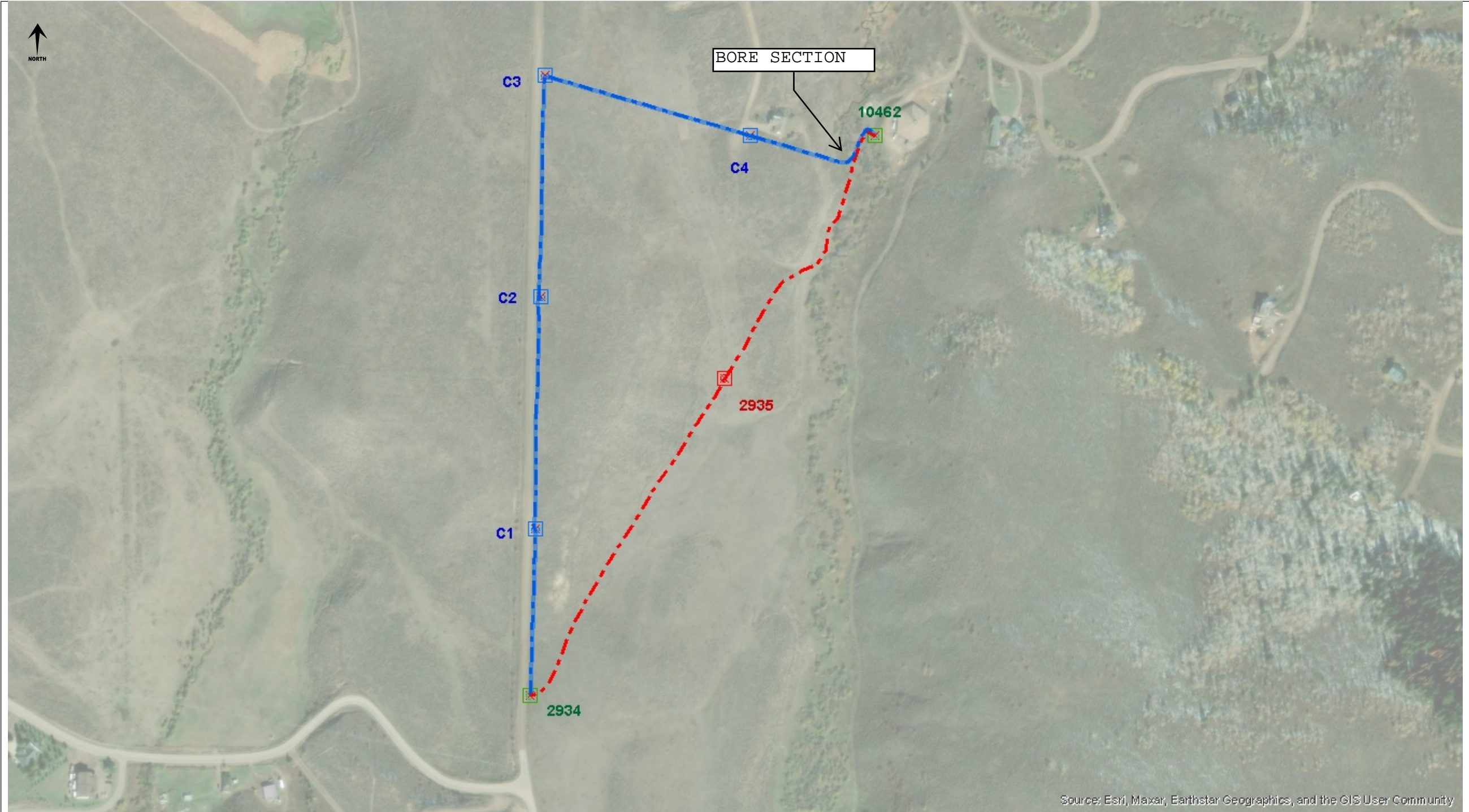
Description: CWP 3ph UG Repl - RCR 16A Southshore Tap
Service Address: RCR 16 & 16A to 24490 UNCOMPAHGRE RD
City: Oak Creek **State:** CO
Contact Name: YAMPA VALLEY ELECTRIC ASSN
Contact #: Larry B. / (970)871-2282



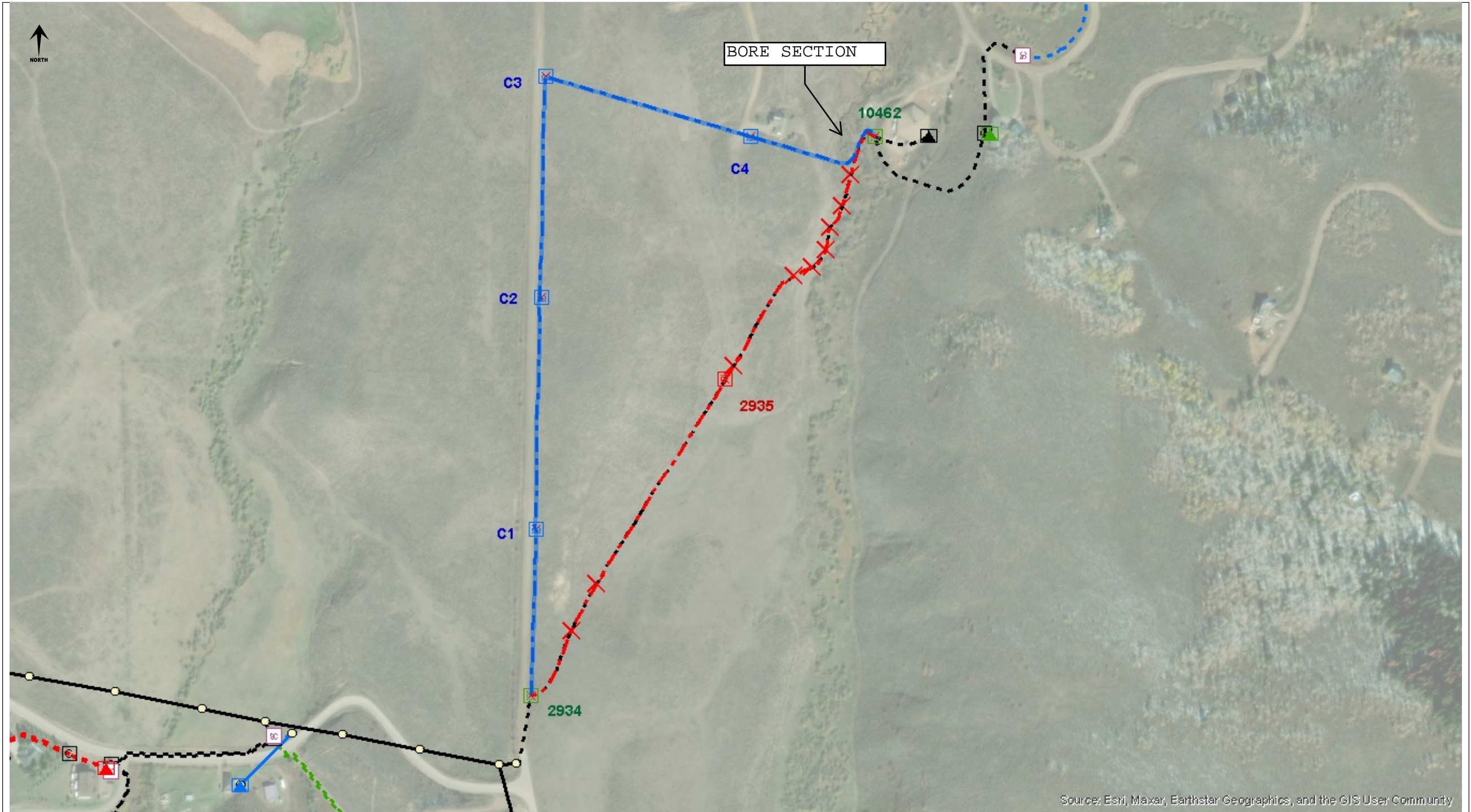
Substation: 36 - Stagecoach **Township:** 3N
Feeder: Lynx Pass **Range:** 84W
County: ROUTT **Section:** 5

W.O. Number: 39274
WO Type: New Construction
SO Number:
Created Date: 08/20/2021
Staked By: LARRY J BALL
Staked Date: 01/02/2024

Pole #	Span	Ø	*	Pole	Pri Wire	Primary	Transformer	Ground	Guy	Lead	Anchor	Conduit	Trench	Sec Wire	Secondary	Misc
10462	522	ABC	E			(6) UM6-1		UM48-2C								UM-13
<i>Prev: C4</i>		L/A: -16	E			(3) UM6-22										
			E			(3) UM6-10										
			E			UM33										
			R			(3) UM6-1										
			C		(3) UD10	(3) UM6-1						(3) UM50-PP-2(P)	UR 2-S(54"D)			(522) UM50-PP-2.0(FO)
			C										UR-5R-2			
Bore New Line Across Morrison Creek from C4 (Dig from C4 to Bore Pit for Crossing) - Abandon EX line to 2935																
10462	1055	ABC	E			(6) UM6-1		UM48-2C								UM-13
<i>Prev: 2935</i>		L/A: 1	E			(3) UM6-22										
			E			(3) UM6-10										
			E			UM33										
			R		(3) UD10DB											
Bore New Line Across Morrison Creek from C4 (Dig from C4 to Bore Pit for Crossing) - Abandon EX line to 2935																
2935	1296	ABC	R		(3) UD10DB	(3) UM6-22		(2) UM48-2C								UM-13
<i>Prev: 2934</i>		L/A: 0	R			(6) UM6-1										
			R			(6) UM6-10										
			R			UM33										
Retire Cubicle and Abandon 1/0 URD from 2934 to 10462																



Source: Esri, Maxar, Earthstar Geographics, and the GIS User Community



Source: Esri, Maxar, Earthstar Geographics, and the GIS User Community