

4 ANT FRAME DETAILS			
A2 SECTOR	ANTENNA MANUFACTURER & MODEL:	1x CELLMAX CMA-UBTULBULBHH	ANTENNA MANUFACTURER & MODEL:
	AZIMUTH:	31° MAG (40° TRUE)	1x CELLMAX CMA-UBTULBULBHH
	ANTENNA CL ABOVE GROUND LEVEL:	80'	AZIMUTH:
	TECHNOLOGY LOW BAND MHz PORTS:	LTE 850	31° MAG (40° TRUE)
	DOWNTILT LOW BAND MHz PORTS:	0° MECH, RET (SEE BUILDSHEET)	ANTENNA CL ABOVE GROUND LEVEL:
	COAX SPECS LOW BAND MHz PORTS:	4x 1/2" COAX	80'
	TECHNOLOGY MID BAND MHz PORTS:	INACTIVE	TECHNOLOGY LOW BAND MHz PORTS:
A3 SECTOR	DOWNTILT MID BAND MHz PORTS:	INACTIVE	LTE 700
	COAX SPECS MID BAND MHz PORTS:	4x PORTS CAPPED	DOWNTILT LOW BAND MHz PORTS:
			0° MECH, RET (SEE BUILDSHEET)
			COAX SPECS LOW BAND MHz PORTS:
			4x 1/2" COAX
			TECHNOLOGY MID BAND MHz PORTS:
			LTE 1900/2100
B2 SECTOR	ANTENNA MANUFACTURER & MODEL:	1x CELLMAX CMA-UBTULBULBHH	DOWNTILT MID BAND MHz PORTS:
	AZIMUTH:	126° MAG (135° TRUE)	0° MECH, RET (SEE BUILDSHEET)
	ANTENNA CL ABOVE GROUND LEVEL:	80'	COAX SPECS MID BAND MHz PORTS:
	TECHNOLOGY LOW BAND MHz PORTS:	LTE 850	4x 1/2" COAX
	DOWNTILT LOW BAND MHz PORTS:	0° MECH, RET (SEE BUILDSHEET)	ANTENNA MANUFACTURER & MODEL:
	COAX SPECS LOW BAND MHz PORTS:	4x 1/2" COAX	1x CELLMAX CMA-UBTULBULBHH
	TECHNOLOGY MID BAND MHz PORTS:	INACTIVE	AZIMUTH:
B3 SECTOR	DOWNTILT MID BAND MHz PORTS:	INACTIVE	126° MAG (135° TRUE)
	COAX SPECS MID BAND MHz PORTS:	4x PORTS CAPPED	ANTENNA CL ABOVE GROUND LEVEL:
			80'
			TECHNOLOGY LOW BAND MHz PORTS:
			LTE 700
			DOWNTILT LOW BAND MHz PORTS:
			0° MECH, RET (SEE BUILDSHEET)
G2 SECTOR	ANTENNA MANUFACTURER & MODEL:	1x CELLMAX CMA-UBTULBULBHH	COAX SPECS LOW BAND MHz PORTS:
	AZIMUTH:	291° MAG (300° TRUE)	4x 1/2" COAX
	ANTENNA CL ABOVE GROUND LEVEL:	80'	TECHNOLOGY MID BAND MHz PORTS:
	TECHNOLOGY LOW BAND MHz PORTS:	LTE 850	LTE 1900/2100
	DOWNTILT LOW BAND MHz PORTS:	0° MECH, RET (SEE BUILDSHEET)	DOWNTILT MID BAND MHz PORTS:
	COAX SPECS LOW BAND MHz PORTS:	4x 1/2" COAX	0° MECH, RET (SEE BUILDSHEET)
	TECHNOLOGY MID BAND MHz PORTS:	INACTIVE	COAX SPECS MID BAND MHz PORTS:
G3 SECTOR	DOWNTILT MID BAND MHz PORTS:	INACTIVE	4x 1/2" COAX
	COAX SPECS MID BAND MHz PORTS:	4x PORTS CAPPED	ANTENNA MANUFACTURER & MODEL:
			1x CELLMAX CMA-UBTULBULBHH
			AZIMUTH:
			291° MAG (300° TRUE)
			ANTENNA CL ABOVE GROUND LEVEL:
			80'

REVIEWED FOR CODE COMPLIANCE
08/07/2024

Union WIRELESS
850 N. HIGHWAY 414
PO BOX 160
MOUNTAIN VIEW, WY 82939

SAC
A Nokia company
300 AIRPORT ROAD
SUITE 1
ELGIN, IL 60123
www.sacw.com
312.895.4977

Kimley»Horn
© 2020 KIMLEY-HORN AND ASSOCIATES, INC.
3875 EMBASSY PKWY., SUITE 280
AKRON, OH 44333
(216) 505-7775

THE INFORMATION CONTAINED IN THIS DOCUMENT IS PROPRIETARY. ANY USE OR DISCLOSURE OTHER THAN THOSE AUTHORIZED BY UNION TELEPHONE COMPANY IS STRICTLY PROHIBITED.

REVISION	ISSUE DATE
A	04/12/2022
B	09/14/2022
0	09/27/2022

DESIGNER: RCG REVIEWER: KBF

COLORADO LICENSED
MICHAEL LADD
48589
PROFESSIONAL ENGINEER

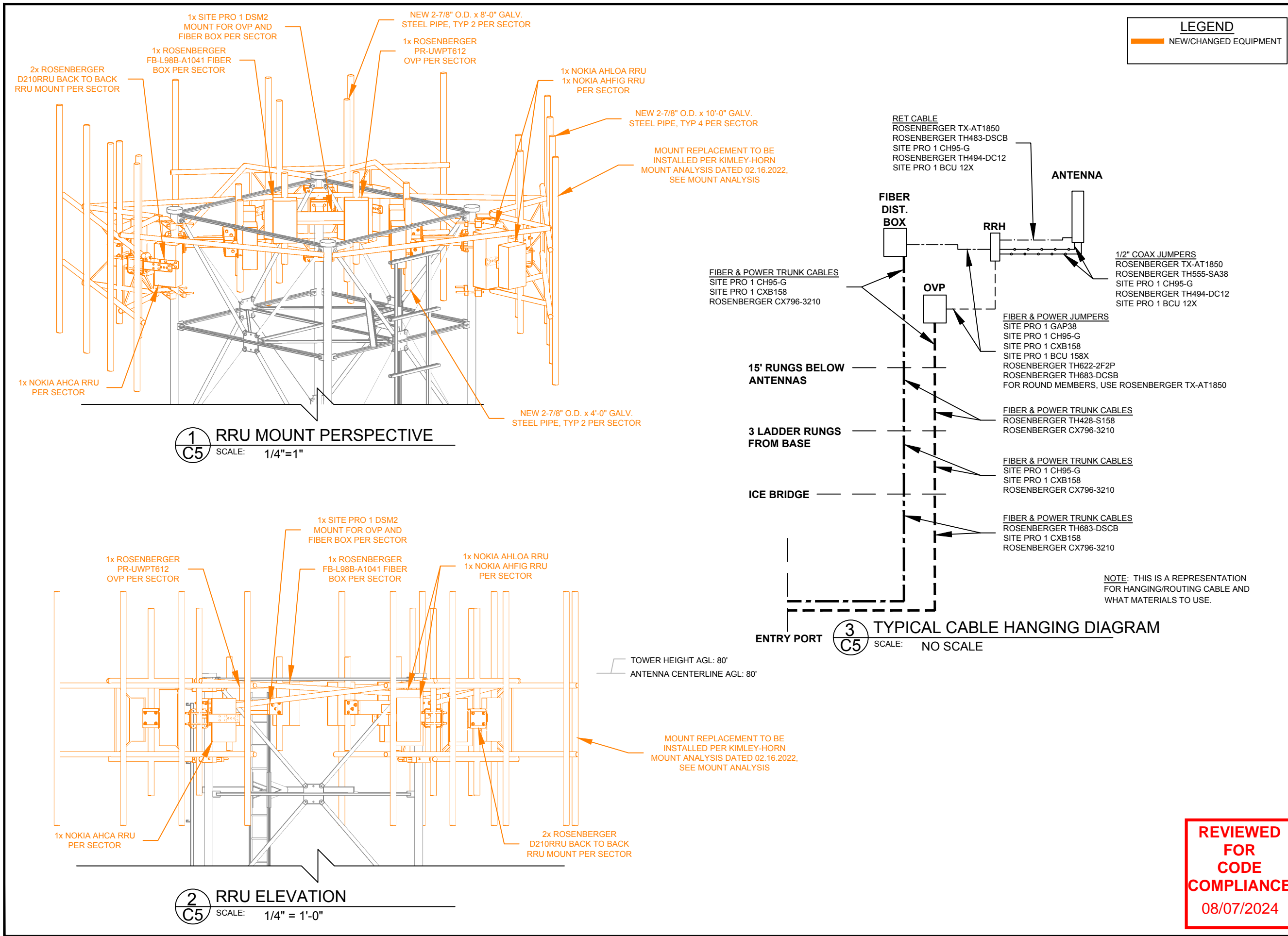
9/27/22
Exp. 10/31/23

PROJECT NAME:
OAK CREEK COAL

PROJECT ADDRESS:
29920 COUNTY ROAD 27
OAK CREEK, ROUTT COUNTY,
CO 80467

SHEET TITLE:
ANTENNA DETAILS

SHEET NUMBER:
C2



Union WIRELESS
850 N. HIGHWAY 414
PO BOX 160
MOUNTAIN VIEW, WY 82939

SAC
300 AIRPORT ROAD
SUITE 1
ELGIN, IL 60123
www.sacw.com
312.895.4977
A Nokia company

Kimley»Horn
© 2020 KIMLEY-HORN AND ASSOCIATES, INC.
3875 EMBASSY PKWY., SUITE 280
AKRON, OH 44333
(216) 505-7775

THE INFORMATION CONTAINED IN THIS DOCUMENT IS PROPRIETARY. ANY USE OR DISCLOSURE OTHER THAN THOSE AUTHORIZED BY UNION TELEPHONE COMPANY IS STRICTLY PROHIBITED.

REVISION	ISSUE DATE
A	04/12/2022
B	09/14/2022
0	09/27/2022

DESIGNER: RCG REVIEWER: KBF

Michael Ladd Ogles
48589
COLORADO LICENSED PROFESSIONAL ENGINEER

9/27/22
Exp. 10/31/23

PROJECT NAME:
OAK CREEK COAL

PROJECT ADDRESS:
29920 COUNTY ROAD 27
OAK CREEK, ROUTT COUNTY,
CO 80467

SHEET TITLE:
RRU MOUNTING DETAILS

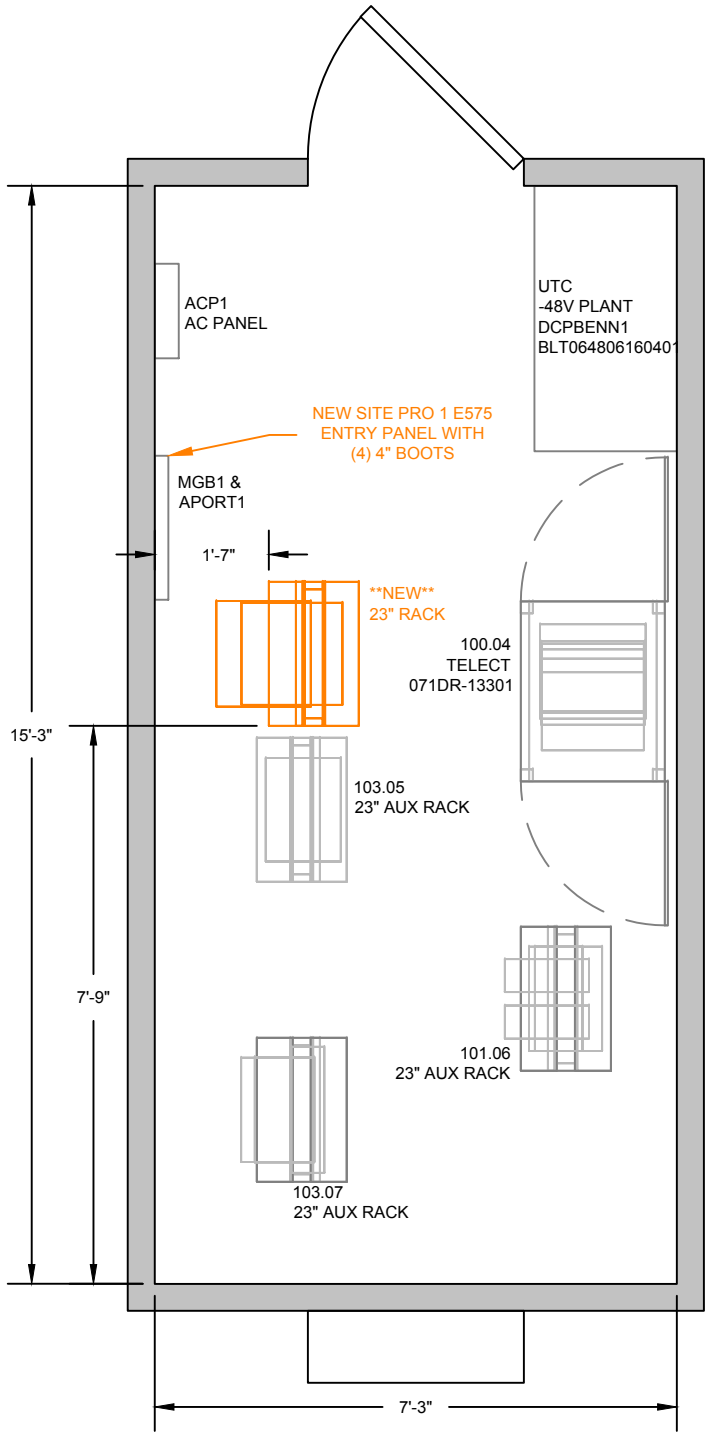
SHEET NUMBER:
C5

REVIEWED FOR CODE COMPLIANCE
08/07/2024

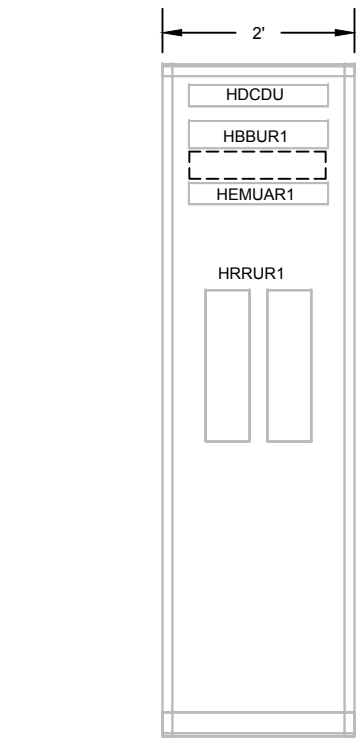
LEGEND

NEW

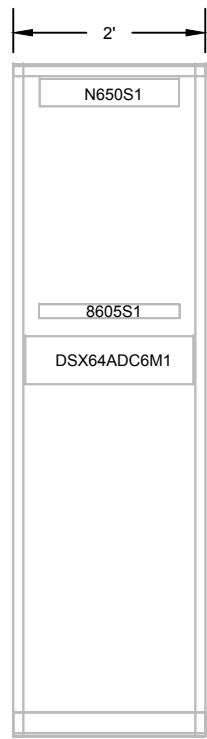
RETIRE



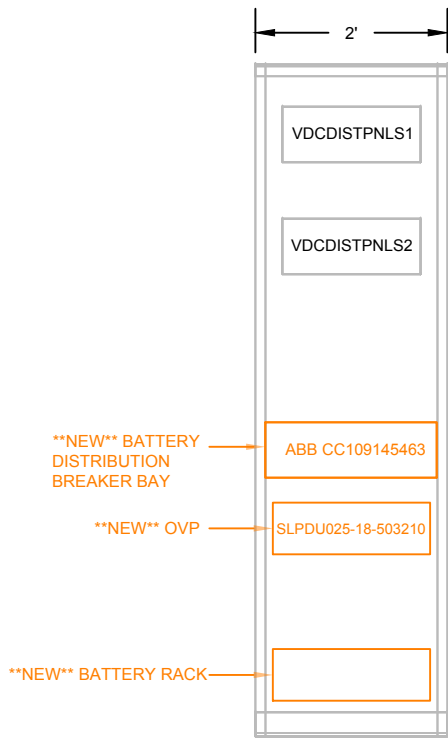
1 COMMUNICATION SITE FLOOR PLAN
A1 SCALE: 3"=8'



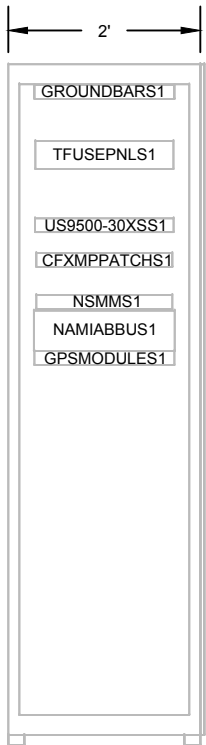
2 RACK ELEVATION 101.06
A1 SCALE: 1"=2'



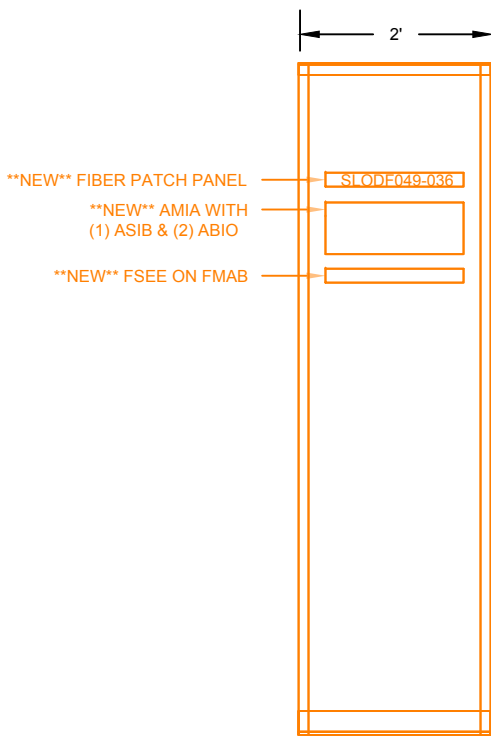
3 RACK ELEVATION 103.07
A1 SCALE: 1"=2'



4 RACK ELEVATION 103.05
A1 SCALE: 1"=2'



5 RACK ELEVATION 100.04
A1 SCALE: 1"=2'



6 NEW RACK ELEVATION
A1 SCALE: 1"=2'

REVIEWED
FOR
CODE
COMPLIANCE
08/07/2024

Union

WIRELESS

850 N. HIGHWAY 414
PO BOX 160
MOUNTAIN VIEW, WY 82939

SAC

300 AIRPORT ROAD
SUITE 1
ELGIN, IL 60123
www.sacw.com
312.895.4977

A Nokia company

Kimley»Horn

© 2020 KIMLEY-HORN AND ASSOCIATES, INC.

3875 EMBASSY PKWY., SUITE 280
AKRON, OH 44333
(216) 505-7775

THE INFORMATION CONTAINED IN THIS DOCUMENT IS PROPRIETARY. ANY USE OR DISCLOSURE OTHER THAN THOSE AUTHORIZED BY UNION TELEPHONE COMPANY IS STRICTLY PROHIBITED.

REVISION	ISSUE DATE
A	04/12/2022
B	09/14/2022
0	09/27/2022
DESIGNER: RCG	REVIEWER: KBF

COLORADO LICENSED
MICHAEL LADD
48589
PROFESSIONAL ENGINEER

9/27/22
Exp. 10/31/23

PROJECT NAME:
OAK CREEK COAL

PROJECT ADDRESS:
29920 COUNTY ROAD 27
OAK CREEK, ROUTT COUNTY,
CO 80467

SHEET TITLE:
EQUIPMENT BUILDING LAYOUT

SHEET NUMBER:
A1