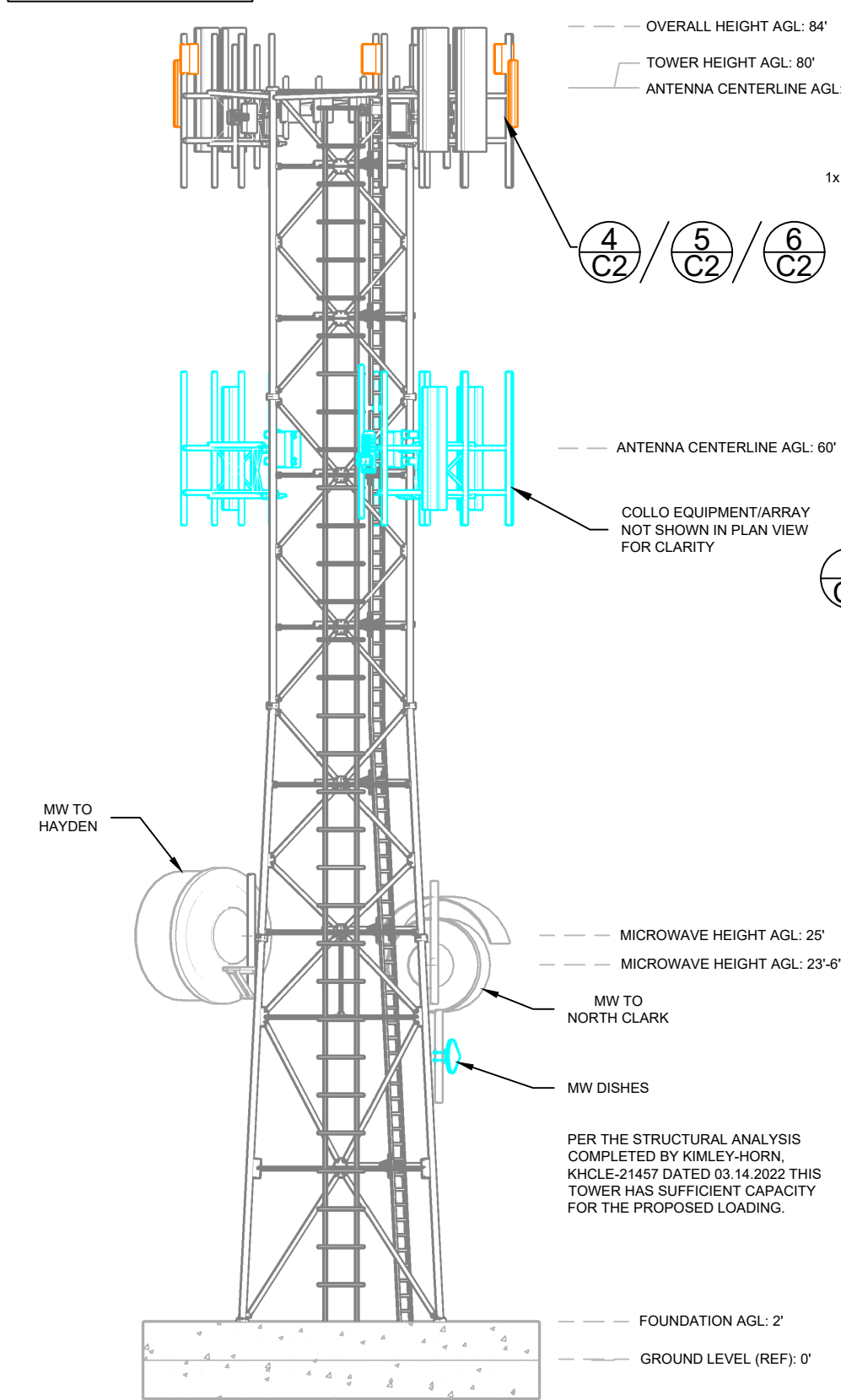


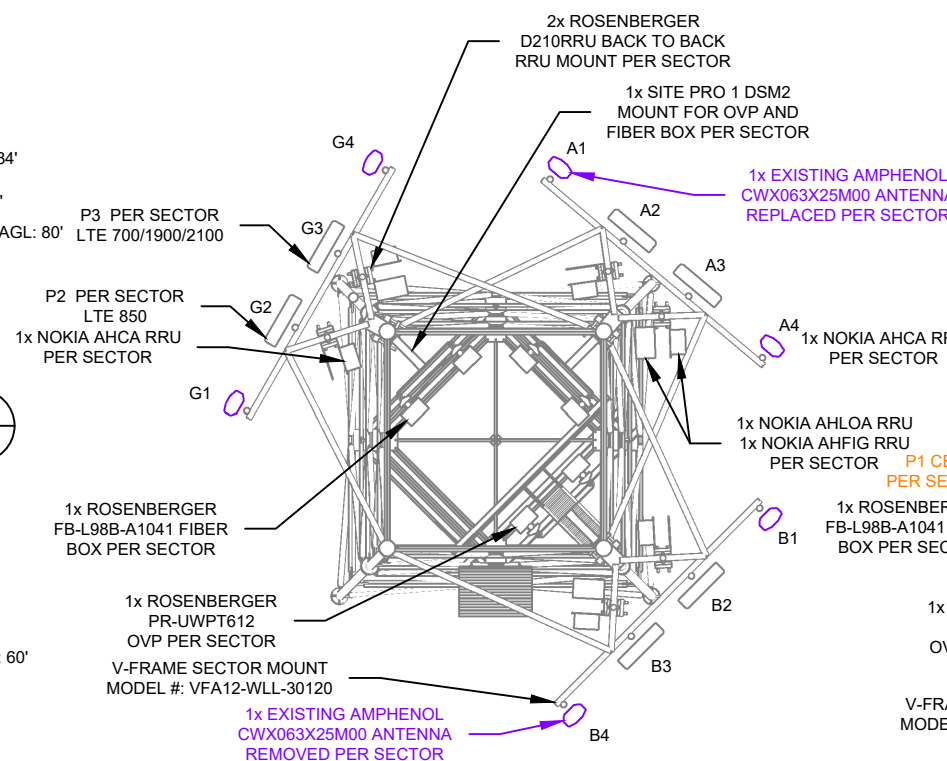
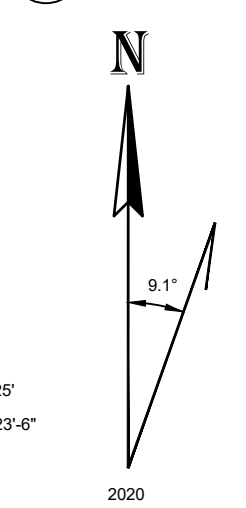
LEGEND

- NEW EQUIPMENT
- REMOVED EQUIPMENT
- COLLO EQUIPMENT

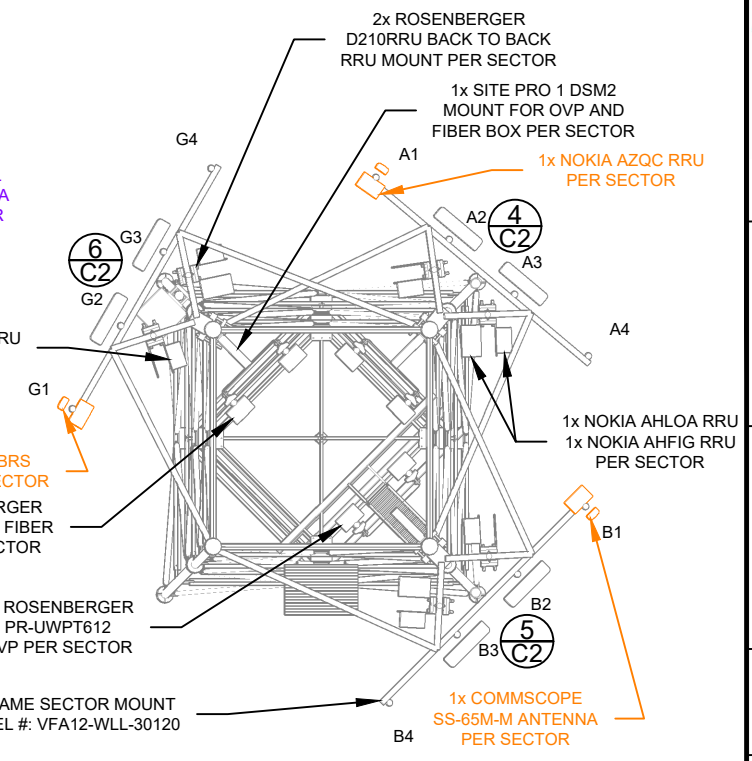


1 SOUTH FACE ELEVATION
SCALE: 3/32" = 1'-0"

2 EXISTING ANTENNA DETAILS
SCALE: 1/8" = 1'-0"



3 FINAL ANTENNA DETAILS
SCALE: 1/8" = 1'-0"



| 4 ANT FRAME DETAILS | |
|---------------------|--|
| A1 SECTOR | ANTENNA MANUFACTURER & MODEL: 1x COMMSCOPE SS-65M-M |
| | AZIMUTH: 31° MAG (40° TRUE) |
| | ANTENNA CL ABOVE GROUND LEVEL: 80' |
| | TECHNOLOGY LOW BAND MHz PORTS: CBRS |
| | DOWNTILT LOW BAND MHz PORTS: 0° MECH, RET (SEE BUILDSHEET) |
| | COAX SPECS LOW BAND MHz PORTS: 4x 1/2" COAX |
| | TECHNOLOGY MID BAND MHz PORTS: INACTIVE |
| | DOWNTILT MID BAND MHz PORTS: INACTIVE |
| B1 SECTOR | ANTENNA MANUFACTURER & MODEL: 1x COMMSCOPE SS-65M-M |
| | AZIMUTH: 126° MAG (135° TRUE) |
| | ANTENNA CL ABOVE GROUND LEVEL: 80' |
| | TECHNOLOGY LOW BAND MHz PORTS: CBRS |
| | DOWNTILT LOW BAND MHz PORTS: 0° MECH, RET (SEE BUILDSHEET) |
| | COAX SPECS LOW BAND MHz PORTS: 4x 1/2" COAX |
| | TECHNOLOGY MID BAND MHz PORTS: INACTIVE |
| | DOWNTILT MID BAND MHz PORTS: INACTIVE |
| G1 SECTOR | ANTENNA MANUFACTURER & MODEL: 1x COMMSCOPE SS-65M-M |
| | AZIMUTH: 291° MAG (300° TRUE) |
| | ANTENNA CL ABOVE GROUND LEVEL: 80' |
| | TECHNOLOGY LOW BAND MHz PORTS: CBRS |
| | DOWNTILT LOW BAND MHz PORTS: 0° MECH, RET (SEE BUILDSHEET) |
| | COAX SPECS LOW BAND MHz PORTS: 4x 1/2" COAX |
| | TECHNOLOGY MID BAND MHz PORTS: INACTIVE |
| | DOWNTILT MID BAND MHz PORTS: INACTIVE |

REVIEWED
FOR
CODE
COMPLIANCE
08/07/2024

Union
WIRELESS

850 N. HIGHWAY 414
PO BOX 160
MOUNTAIN VIEW, WY 82939

SAC
A Nokia company

300 AIRPORT ROAD
SUITE 1
ELGIN, IL 60123
www.sacw.com
312.895.4977

Kimley»Horn

© 2020 KIMLEY-HORN AND ASSOCIATES, INC.

3875 EMBASSY PKWY., SUITE 280
AKRON, OH 44333
(216) 505-7775

THE INFORMATION CONTAINED IN THIS DOCUMENT IS PROPRIETARY. ANY USE OR DISCLOSURE OTHER THAN THOSE AUTHORIZED BY UNION TELEPHONE COMPANY IS STRICTLY PROHIBITED.

| REVISION | ISSUE DATE |
|----------|------------|
| A | 01/19/24 |
| 0 | 04/16/24 |

DESIGNER: ECW REVIEWER: KBF

COLORADO LICENSED
DAVID J S BAYS
63430
PROFESSIONAL ENGINEER

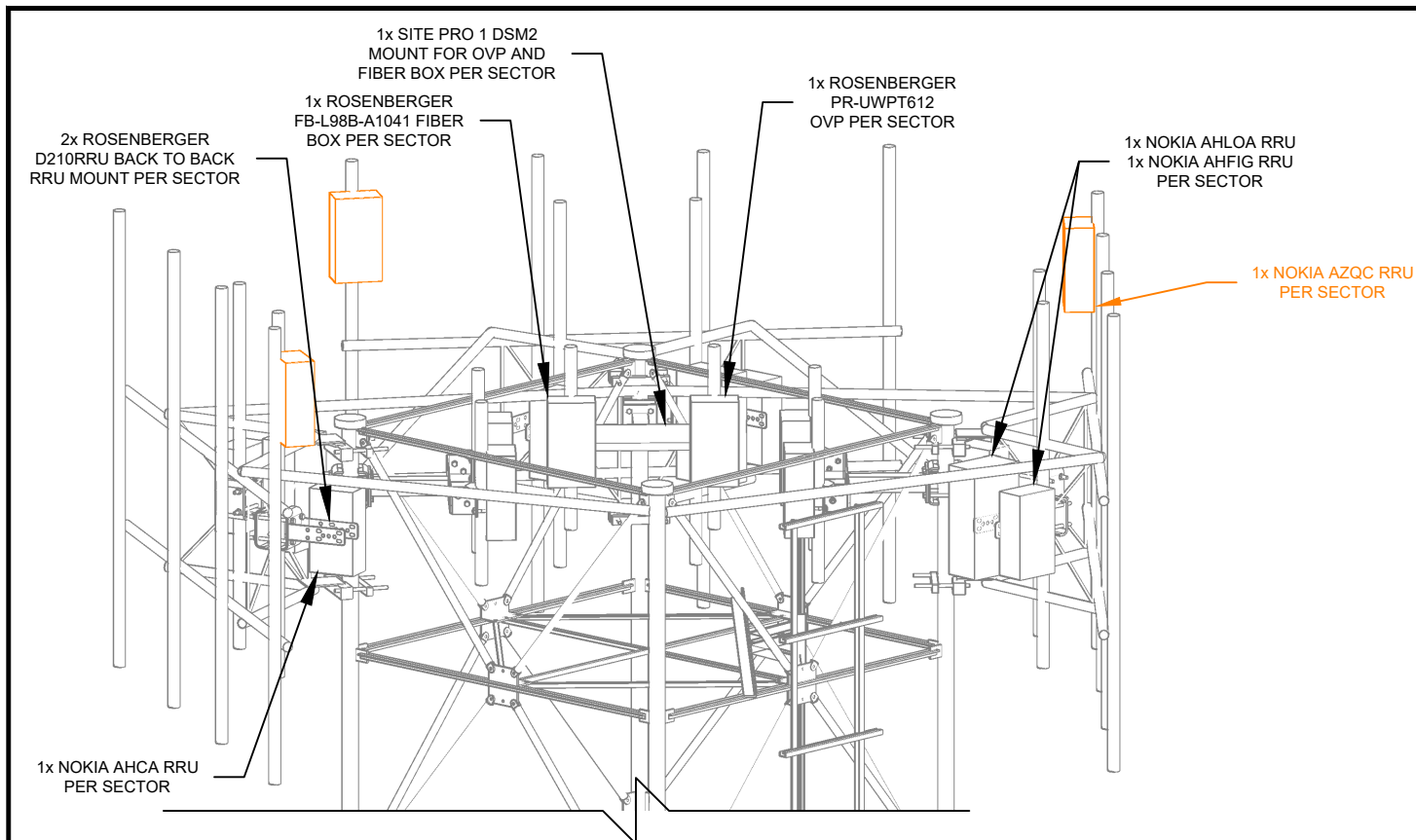
DATE: 04/18/24
EXP: 10/31/25

PROJECT NAME:
OAK CREEK COAL

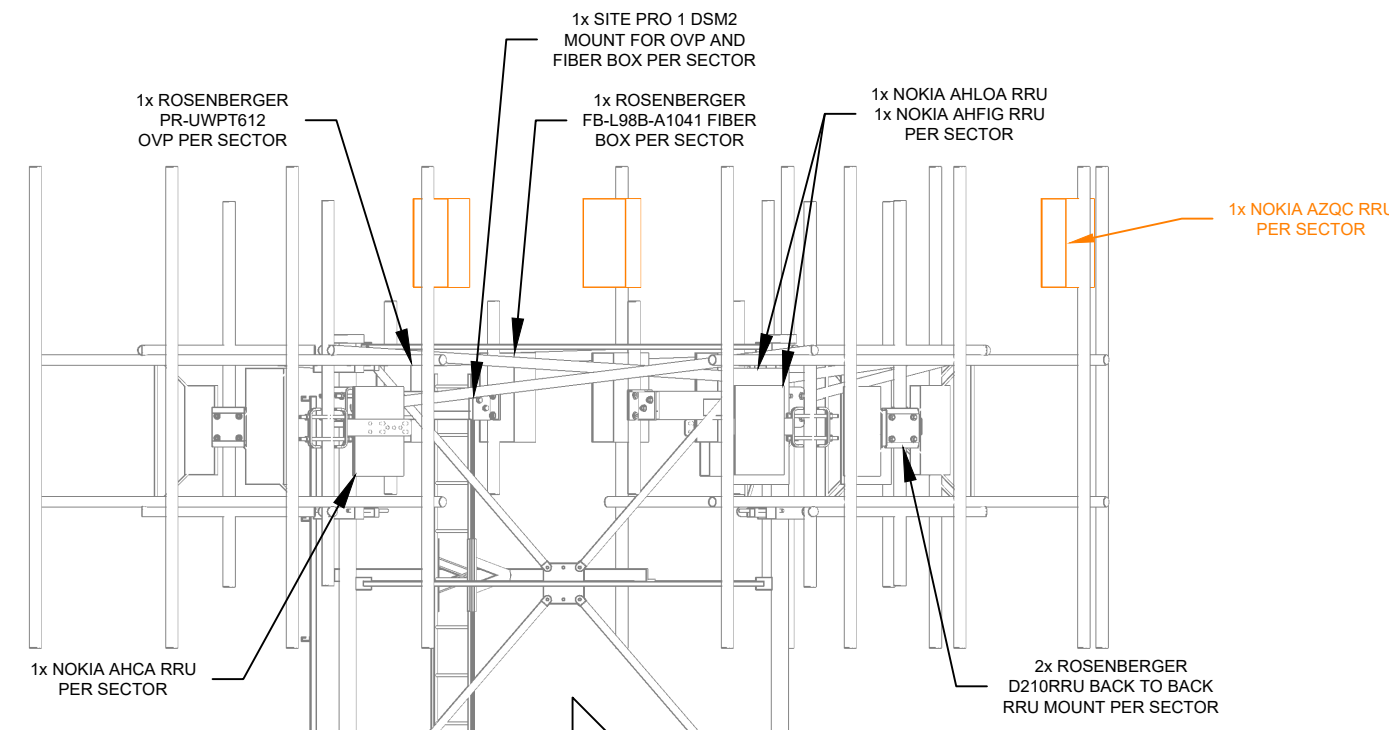
PROJECT ADDRESS:
29920 COUNTY ROAD 27
OAK CREEK, ROUTT COUNTY,
CO 80467

SHEET TITLE:
ANTENNA DETAILS

SHEET NUMBER:
C2

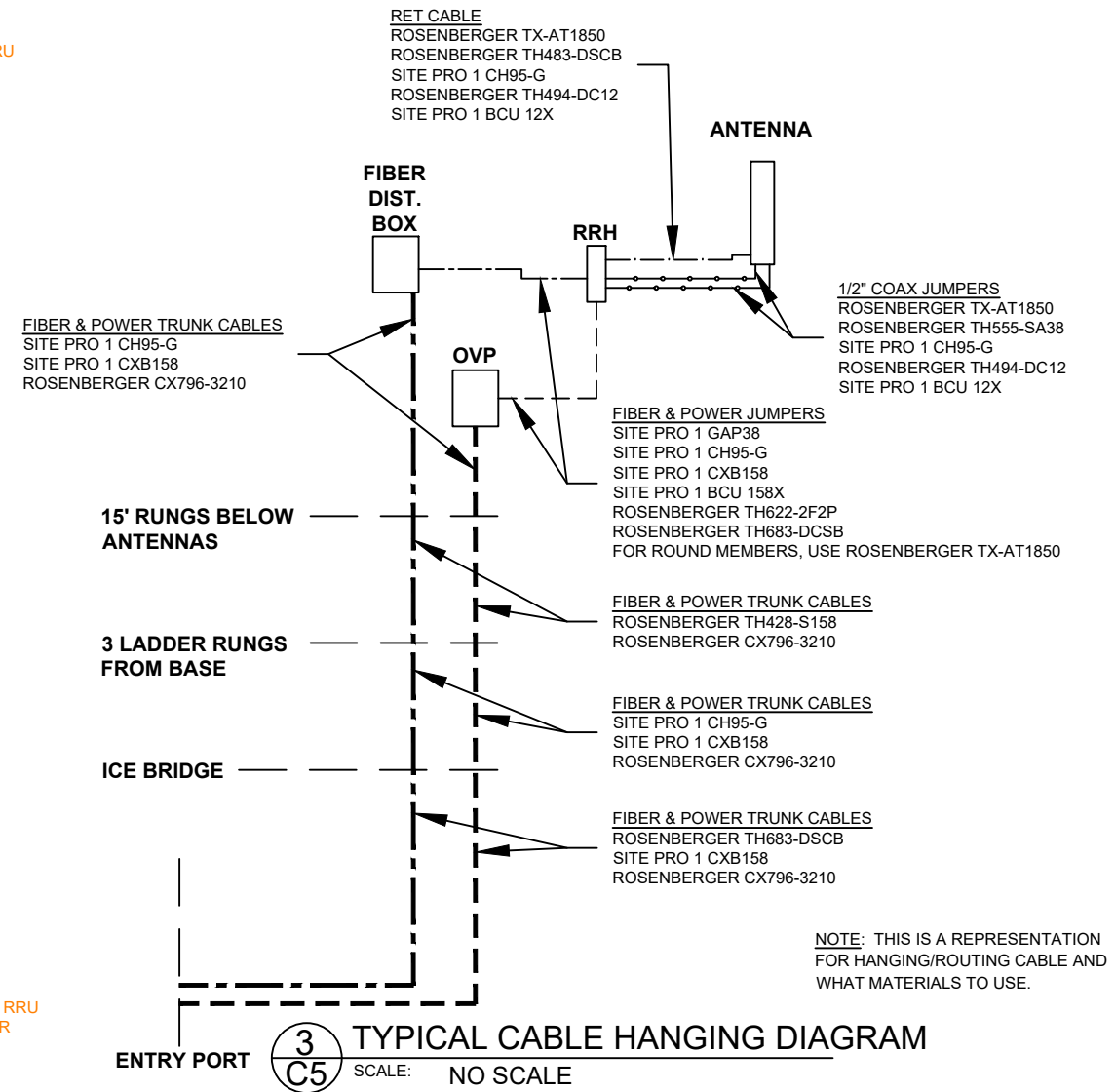


1 RRU MOUNT PERSPECTIVE
 C5 SCALE: 1/4"=1"



2 RRU ELEVATION
 C5 SCALE: 1/4" = 1'-0"

LEGEND
 NEW/CHANGED EQUIPMENT



3 TYPICAL CABLE HANGING DIAGRAM
 C5 SCALE: NO SCALE

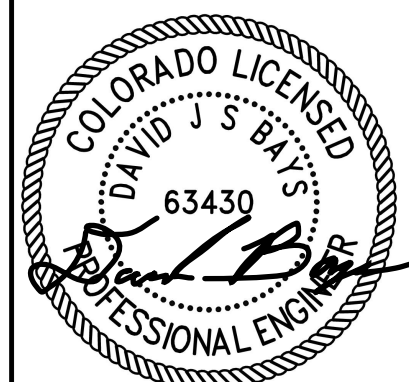
Union WIRELESS
 850 N. HIGHWAY 414
 PO BOX 160
 MOUNTAIN VIEW, WY 82939

SAC
 A Nokia company
 300 AIRPORT ROAD
 SUITE 1
 ELGIN, IL 60123
 www.sacw.com
 312.895.4977

Kimley»Horn
 © 2020 KIMLEY-HORN AND ASSOCIATES, INC.
 3875 EMBASSY PKWY., SUITE 280
 AKRON, OH 44333
 (216) 505-7775

THE INFORMATION CONTAINED IN THIS DOCUMENT IS PROPRIETARY. ANY USE OR DISCLOSURE OTHER THAN THOSE AUTHORIZED BY UNION TELEPHONE COMPANY IS STRICTLY PROHIBITED.

| REVISION | ISSUE DATE |
|---------------|---------------|
| A | 01/19/24 |
| 0 | 04/16/24 |
| DESIGNER: ECW | REVIEWER: KBF |



DATE: 04/18/24
 EXP: 10/31/25

PROJECT NAME:
OAK CREEK COAL
 PROJECT ADDRESS:
 29920 COUNTY ROAD 27
 OAK CREEK, ROUTT COUNTY,
 CO 80467

SHEET TITLE:
RRU MOUNTING DETAILS

SHEET NUMBER:
 C5

**REVIEWED
 FOR
 CODE
 COMPLIANCE
 08/07/2024**

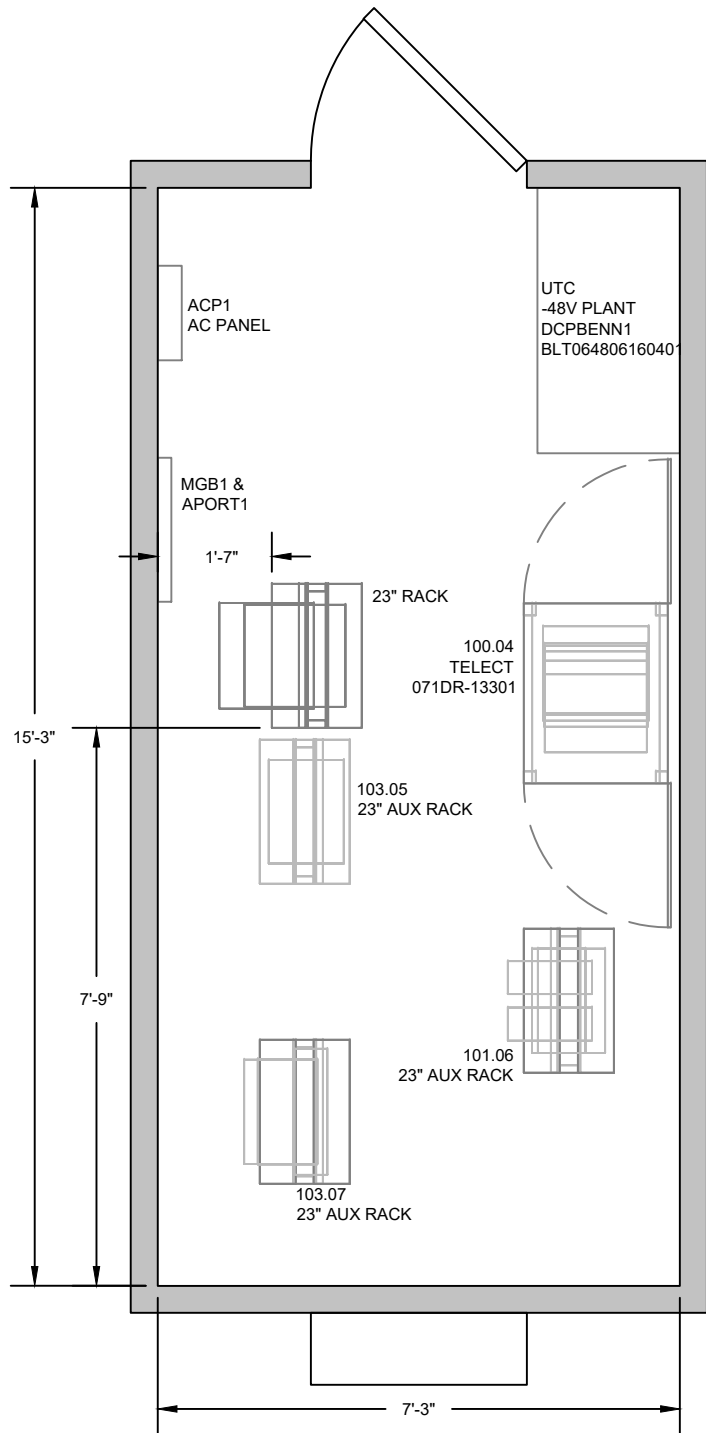
LEGEND

NEW

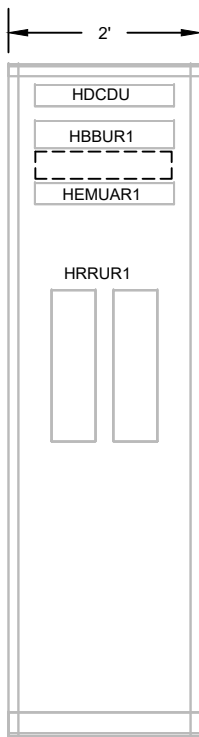
RETIRE

REFER TO RFDS FOR
GROUND SCOPE OF WORK.

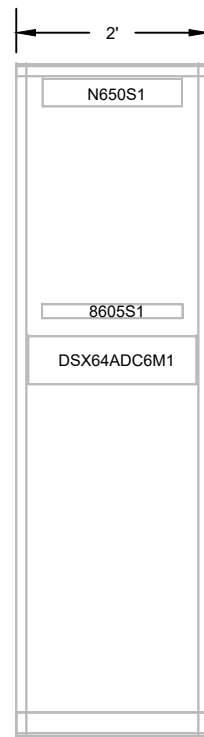
ALL EXISTING HUAWEI EQUIPMENT TO BE
REMOVED FROM SHELTER AND TOWER
AND THEN RETURNED TO UNION WIRELESS.



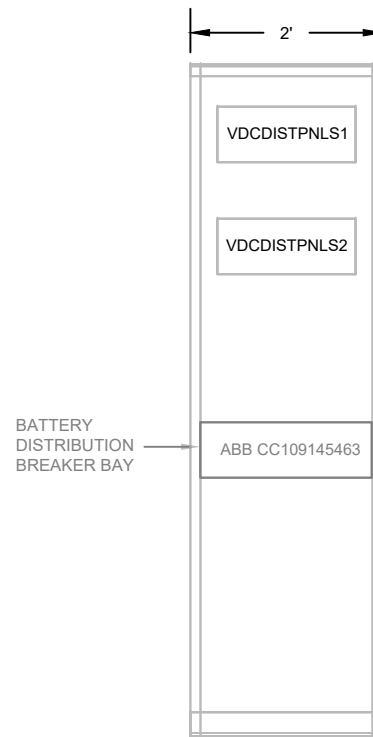
1
A1 COMMUNICATION SITE FLOOR PLAN
SCALE: 3"=8'



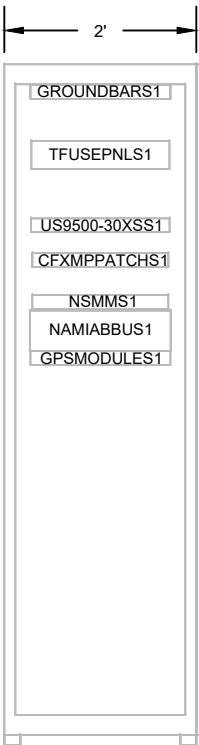
2
A1 RACK ELEVATION 101.06
SCALE: 1"=2'



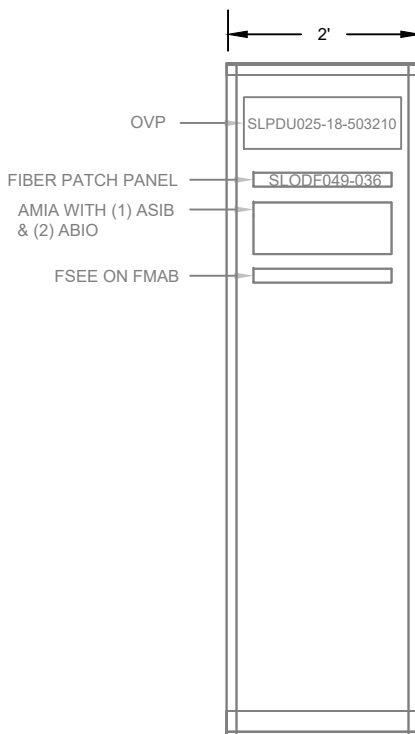
3
A1 RACK ELEVATION 103.07
SCALE: 1"=2'



4
A1 RACK ELEVATION 103.05
SCALE: 1"=2'



5
A1 RACK ELEVATION 100.04
SCALE: 1"=2'



6
A1 NEW RACK ELEVATION
SCALE: 1"=2'

REVIEWED
FOR
CODE
COMPLIANCE
08/07/2024

Union
WIRELESS

850 N. HIGHWAY 414
PO BOX 160
MOUNTAIN VIEW, WY 82939

SAC

300 AIRPORT ROAD
SUITE 1
ELGIN, IL 60123
WWW.SACW.COM
312.895.4977

A Nokia company

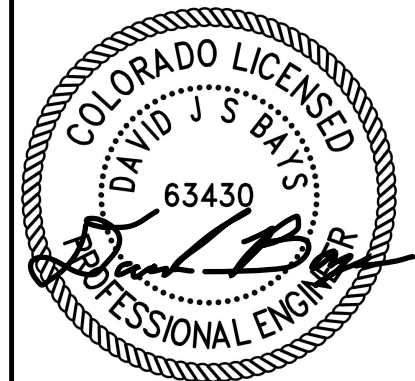
Kimley»Horn

© 2020 KIMLEY-HORN AND ASSOCIATES, INC.

3875 EMBASSY PKWY., SUITE 280
AKRON, OH 44333
(216) 505-7775

THE INFORMATION CONTAINED IN THIS
DOCUMENT IS PROPRIETARY. ANY USE OR
DISCLOSURE OTHER THAN THOSE AUTHORIZED
BY UNION TELEPHONE COMPANY IS STRICTLY
PROHIBITED.

| REVISION | ISSUE DATE |
|-----------|------------|
| A | 01/19/24 |
| 0 | 04/16/24 |
| DESIGNER: | ECW |
| REVIEWER: | KBF |



DATE: 04/18/24
EXP: 10/31/25

PROJECT NAME:
OAK CREEK COAL

PROJECT ADDRESS:
29920 COUNTY ROAD 27
OAK CREEK, ROUTT COUNTY,
CO 80467

SHEET TITLE:
EQUIPMENT BUILDING LAYOUT

SHEET NUMBER:
A1