

PLOT AND EC PLAN

LOT 4 STEAMBOAT LAKES FILING 1

2N CIVIL

303.925.0544
www.2ncivil.com



PREPARED FOR:
FINCH

PLOT AND EC PLAN
LOT 4 STEAMBOAT LAKES FILING 1
ROUTT COUNTY, COLORADO

DATE:
BY:

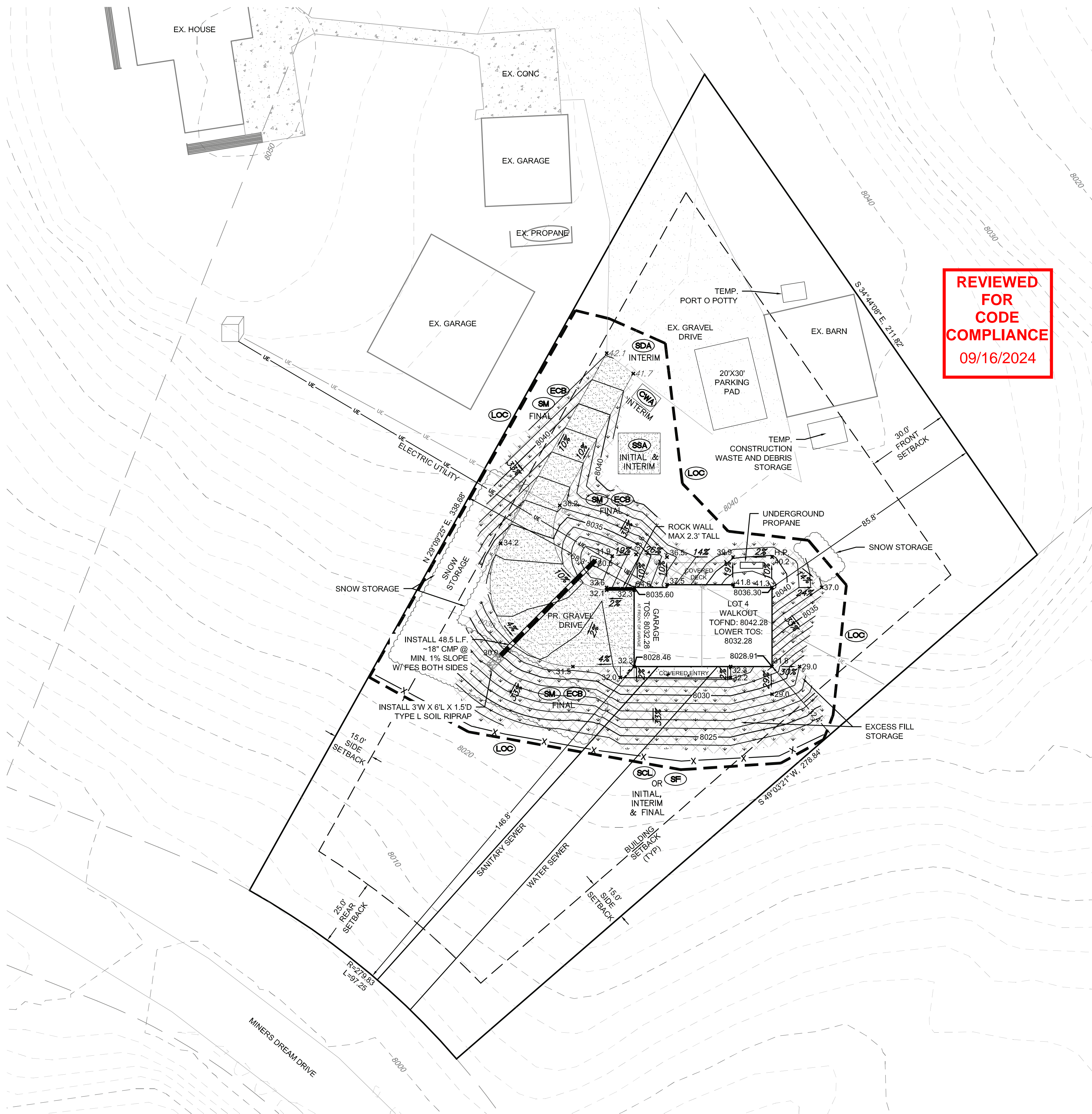
REVISIONS:

24250

ISSUED DATE:
DESIGNED BY:
REVIEWED BY:

PLOT AND
EC PLAN

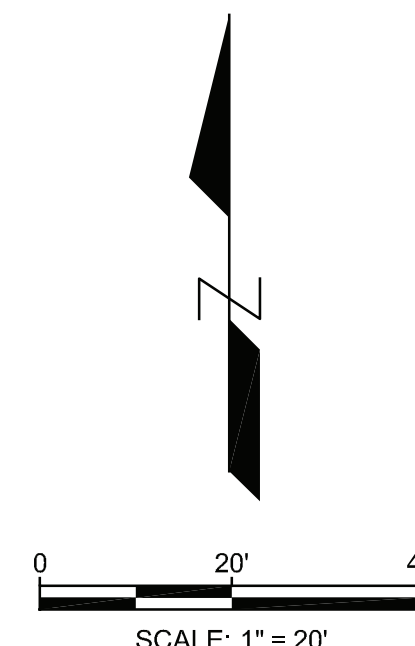
1



- LOC --- LIMITS OF CONSTRUCTION
- ECB EROSION CONTROL BLANKET (FINAL)
- SM SEEDING & MULCHING (FINAL)
- SCL SEDIMENT CONTROL LOG (INITIAL, INTERIM & FINAL)
- SF SILT FENCE (INITIAL, INTERIM & FINAL)
- SDA STABILIZED DRIVEWAY ACCESS (INTERIM)
- CWA CONCRETE WASHOUT AREA (INTERIM)
- SBA STABILIZED STAGING AREA (INITIAL & INTERIM)

NOTES:

- REFER TO ROUTT COUNTY EC STANDARD NOTES AND DETAIL SHEETS FOR INSTALLATION AND MAINTENANCE OF EC BMPs.
- ANY AREA WHERE VEGETATION IS REMOVED BY VEHICLE TRAFFIC OR STAGING WILL BE SEEDED AND MULCHED.
- ANY ADDITIONAL EROSION CONTROLS DEEMED NECESSARY BY THE ROUTT COUNTY EROSION CONTROL INSPECTOR WILL BE INSTALLED PER THE INSPECTORS DIRECTION.
- ALL DISTURBED SOIL OUTSIDE OF BUILDING FOOTPRINT WILL BE SEEDED AND MULCHED IN ACCORDANCE WITH ROUTT COUNTY CRITERIA UNLESS SURFACED WITH GRAVEL, CONCRETE OR OTHER IMPERVIOUS MATERIAL.
- ANY CREATED SLOPES STEEPER THAN 4H:1V WILL BE PROTECTED BY EROSION CONTROL BLANKET, SEEDING AND MULCHING.
- GRADED SLOPES SHALL NOT BE STEEPER THAN 2H:1V.
- A MINIMUM SLOPE OF 10% AND A MAXIMUM SLOPE OF 33% IN THE FIRST 10 FEET AWAY FROM THE FOUNDATION WALLS AND WINDOW WELLS SHALL BE ESTABLISHED FOR PVIOUS SURFACES. ALL OTHER DISTURBED AREAS SHALL HAVE A MINIMUM OF 2% SLOPE.
- THIS PLOT PLAN IS FOR THE DESIGN OF GRADING AND DRAINAGE SURROUNDING THE HOUSE. IT IS NOT TO BE USED FOR FOUNDATION DIMENSIONS, OR CONSTRUCTION OF THE HOUSE EXCEPT FOR ESTABLISHING THE TOP OF FOUNDATION GRADE.
- EXISTING CONTOURS ARE 2' AND 10' INTERVALS.
- SIDING TO REMAIN 6" ABOVE FINISHED GRADE.



THE DRAINAGE, EROSION AND SEDIMENT CONTROL PLAN INCLUDED HEREIN HAS BEEN PREPARED UNDER MY DIRECT SUPERVISION IN ACCORDANCE WITH THE REQUIREMENTS OF THE CRITERIA MANUAL OF ROUTT COUNTY, AS AMENDED

DESC PLANS PREPARED BY:

2N CIVIL, LLC

DATE

PROFESSIONAL LICENSE NO.



DEVELOPMENT REVIEW ENGINEER

DATE

THIS EC PLAN HAS BEEN REVIEWED BY ROUT COUNTY FOR DRAINAGE, EROSION AND SEDIMENT CONTROL IMPROVEMENTS ONLY.

ENGINEERING DIVISION ACCEPTANCE BLOCK