

PROJECT INDEX

APPLICANT
UNION TELEPHONE COMPANY
850 N HIGHWAY 414
PO BOX 160
MOUNTAIN VIEW, WY 82939

SITE ACQUISITION
CONTACT: RYAN SCHMIDT
PHONE: (307) 780-4031
EMAIL: rschmidt@unionwireless.com

ENGINEER/DESIGNER
CONTACT: ANGELA JONES
PHONE: (307) 782-4045
EMAIL: ajones@unionwireless.com

CONSTRUCTION MANAGER
CONTACT: JUSTIN HAWS
PHONE: (307) 747-7054
EMAIL: jhaws@unionwireless.com

SURVEYOR
PLANS NOT VERIFIED BY A LICENSED SURVEYOR

PROPERTY OWNER
SBA TOWERS II LLC
5900 BROKEN SOUND PKWY 2ND FL
STEAMBOAT SPRINGS, CO 80487
PHONE: (888) 950-7483

POWER COMPANY
YAMPA VALLEY ELECTRIC ASSOCIATION
3716 EAST US HWY 40
P.O. BOX 217
CRAIG, CO 81626

CONTACT:
PHONE: (970) 824-6693

TELEPHONE COMPANY
SITE CONNECTED TO UNION NETWORK VIA
MICROWAVE RADIO.

DRAWING INDEX

SHEET	TITLE	REV
T1	TITLE SHEET	F
C1	SITE PLAN	F
C2	PANEL ANTENNA ELEVATION	F
C3	MICROWAVE ELEVATION	F
R1	RAN CABLING	F
A1	OLD EQUIPMENT BUILDING	B
A2	NEW EQUIPMENT BUILDING	B
A3	JUMPER LINE DIAGRAMS	B
E1	PANEL SCHEDULE	A

SITE DESCRIPTION

- 1

LEGAL DESCRIPTION
SE 1/4 OF NE 1/4 SECTION 31
T7N R88W 6THPM
- 2

GEOGRAPHIC COORDINATES (NAD83)
40°31'15.8"N
107°17'48.2"W
- 3

ELEVATION
7285 AMSL
- 4

ASR
NA
- 5

DRAWING DIRECTIONS:
TAKE HWY 40 WEST TO HAYDEN,
ABOUT THE MIDDLE OF TOWN, TAKE A RIGHT
(NORTH) ON WALNUT STREET, AT THE "T" GO
LEFT (WEST) AND CONTINUE UP THE
MOUNTAIN APPROXIMATELY 3.3 MILES TO
THE TOP.

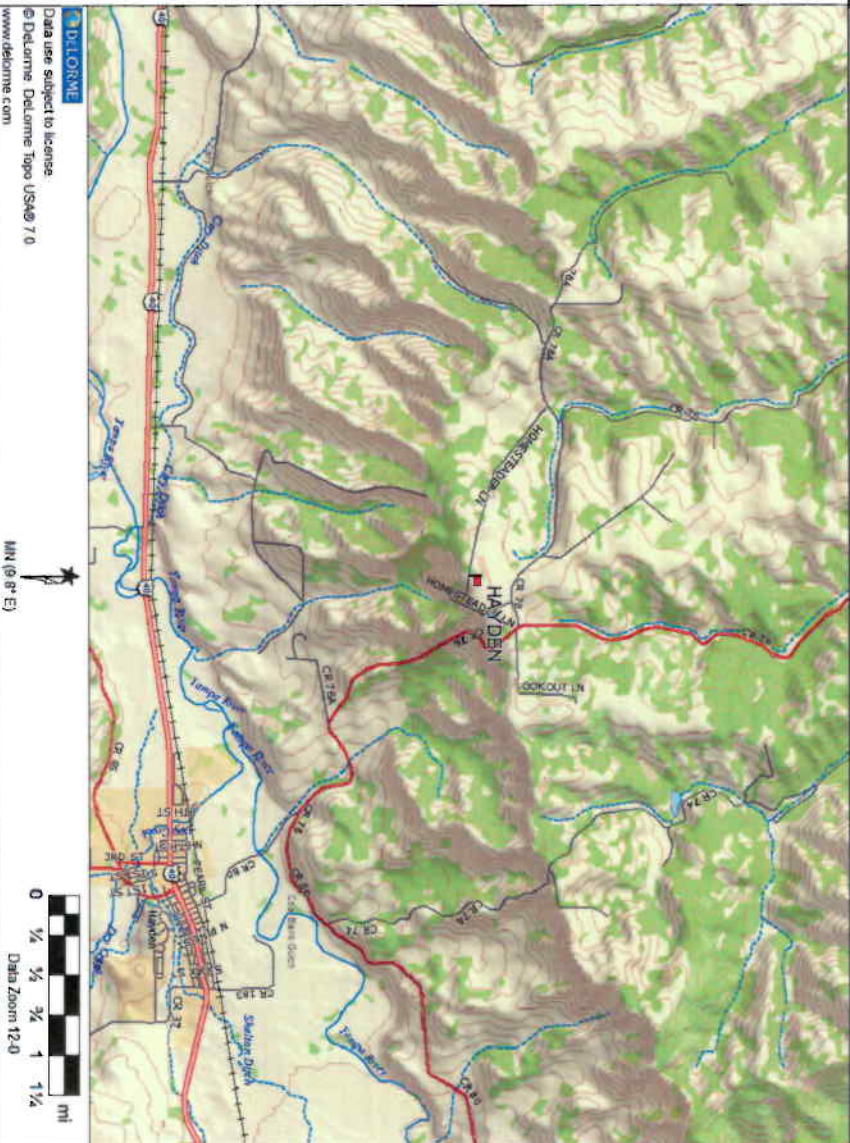
AT THE "Y" TAKE A LEFT ON CR78 AND
FOLLOW FOR 0.2 MILES, TURN LEFT (SOUTH)
ON HOMESTEADER LN AND FOLLOW ROAD
TO SITE.

TIN METAL BUILDING WITH A SMALL TOWER
ON EACH SIDE OF BUILDING.

PLEASE MAKE SURE THE FM TRANSMITTER
TURN DOWN IS SCHEDULED PRIOR TO WORK
COMMENCEMENT

SPECIAL CONSIDERATIONS: "EMERGENCY
911 WILL CONTACT JACKSON COUNTY
SHERIFF, PIERSON COMMUNICATIONS HAS
TWO-WAY RADIO EQUIPMENT IN SAME
BUILDING."

VICINITY MAP



PROJECT NOTES

1. WORK ALREADY COMPLETE:
 - a. PARTITION WALL, HVAC, AND MAIN AC ELECTRICAL EQUIPMENT INSTALLED (EXCLUDING DC PLANT), FLOOR PAINTED.
2. NEW A-PORT & ICE BRIDGE.
3. ELECTRONICS SHELTER INSTALLS.
4. TOWER MODIFICATIONS.
5. NEW MW PATH TO CEDAR MOUNTAIN - CUT.
6. NEW MW PATH TO OAK CREEK COAL - CUT.
7. RETIREMENTS:
 - a. RETIRE THE OLD CEDAR MOUNTAIN MW DISH AND ASSOCIATED LINES AS WELL AS THE LPD 7905 PANEL ANTENNA AND 7/8" LINES FROM THE TOWER.
 - b. RETIRE THE OLD ELECTRONICS FROM THE OLD EQUIPMENT SHELTER.
 - c. PLEASE PERFORM AN AUDIT OF THE EXISTING CPRS SIMPLY STATING WHAT IS PRESENT ON SITE TODAY ON THE EXISTING EXCEL SHEET.



HAYDEN

COMMUNICATION SITE

6985 HOMESTEADER LANE 2

HAYDEN, ROUTT COUNTY, COLORADO

140' LATTICE SELF SUPPORTING TOWER

MW UPGRADES TO CEDAR MOUNTAIN AND OAK CREEK COAL,

BUILDING RELOCATION AND POWER UPGRADE

R C R B D
RECORD SET

GIS/Addressing Ok
03/16/2016 EK



850 N. HIGHWAY 414
PO BOX 160
MOUNTAIN VIEW, WY 82939

THE INFORMATION CONTAINED IN THIS DOCUMENT IS PROPRIETARY. ANY USE OR DISCLOSURE OTHER THAN THOSE AUTHORIZED BY UNION TELEPHONE COMPANY IS STRICTLY PROHIBITED.

CURRENT REV	DATE
F	09/25/2015

DESIGNER
ALYSSA BLAIR/ANGELA JONES

REVIEWER
MATTHEW E. FISHER

APPROVED
FOR
CONSTRUCTION

2 DECEMBER 2015



HAYDEN

PROJECT ADDRESS

6985 HOMESTEADER LANE 2
HAYDEN, ROUTT COUNTY, COLORADO

SHEET TITLE

TITLE SHEET

SHEET NUMBER

T1

DRAWINGS ISSUED BY

ANGELA JONES

TITLE

PROJECT ENGINEER

DATE

2 DECEMBER 2015



THE INFORMATION CONTAINED IN THIS DOCUMENT IS PROPRIETARY. ANY USE OR DISCLOSURE OTHER THAN THOSE AUTHORIZED BY UNION TELEPHONE COMPANY IS STRICTLY PROHIBITED.

CURRENT REV	DATE
F	09/29/2015

DESIGNER
AL YSSA BLAIR/ANGELA JONES

REVIEWER
MATTHEW E. FISHER

APPROVED
FOR
CONSTRUCTION
2 DECEMBER 2015



HAYDEN

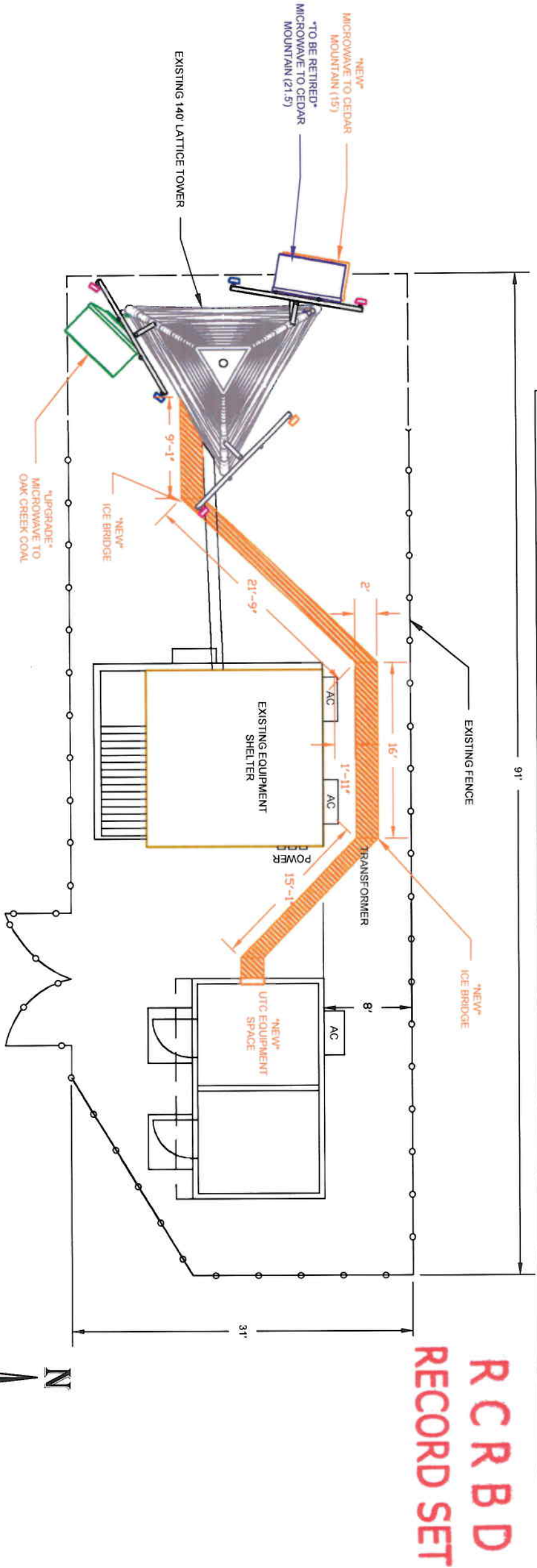
PROJECT ADDRESS
6985 HOMESTEADER LANE 2
HAYDEN, ROUTT COUNTY, COLORADO

SHEET TITLE
PLAN VIEW

SHEET NUMBER
C1

GENERAL NOTES

1. WORK ALREADY COMPLETE:
 - a. PARTITION WALL, HVAC, AND MAIN AC ELECTRICAL EQUIPMENT INSTALLED (EXCLUDING DC PLANT), FLOOR PAINTED.
2. NEW A-PORT & ICE BRIDGE:
 - a. INSTALL A NEW ICE BRIDGE BETWEEN THE ENTRY BOOT AND THE TOWER. THE NEW WAVEGUIDE LADDER WILL BE INSTALLED AROUND THE OLD SHELTER AND BACK TO THE TOWER. PLEASE CONNECT THE DIRECT BURIAL PIPES TO THE GROUND SYSTEM VIA PIPE CLAMP.
 - b. USE THE EXISTING ENTRY BOOT FOR THE NEW LINES AND MW. THIS WILL REQUIRE GROUNDING WITH GROUND BARS AND BFDs FOR THE COAX.
4. TOWER MODIFICATIONS:
 - a. REPLACE THE X-SECTOR LPD 7905 ANTENNA WITH A NEW KATHREIN 800 10634 ANTENNA.
 - b. INSTALL (6X) NEW COAXIAL CABLES FROM THE PANEL ANTENNAS TO THE A-PORT. A, B
 - c. INSTALL NEW DISH AND (1X) LINE OF EW-90 AT THE 15' RAD CENTER UNDER THE EXISTING CEDAR MOUNTAIN DISH.
 - d. INSTALL (2X) LINES OF EW-63 TO THE EXISTING OAK CREEK COAL DISH. PLEASE NOTE THAT ONE POLARIZATION WILL BE UTILIZED INITIALLY, THE OTHER WILL TAKE A NIGHT CUT PRIOR TO CONNECTING TO THE DISH.

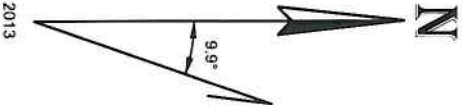


1 COMMUNICATION SITE PLAN
C1 SCALE: 3/32"=1'

LEGEND

NEW

TO BE RETIRED

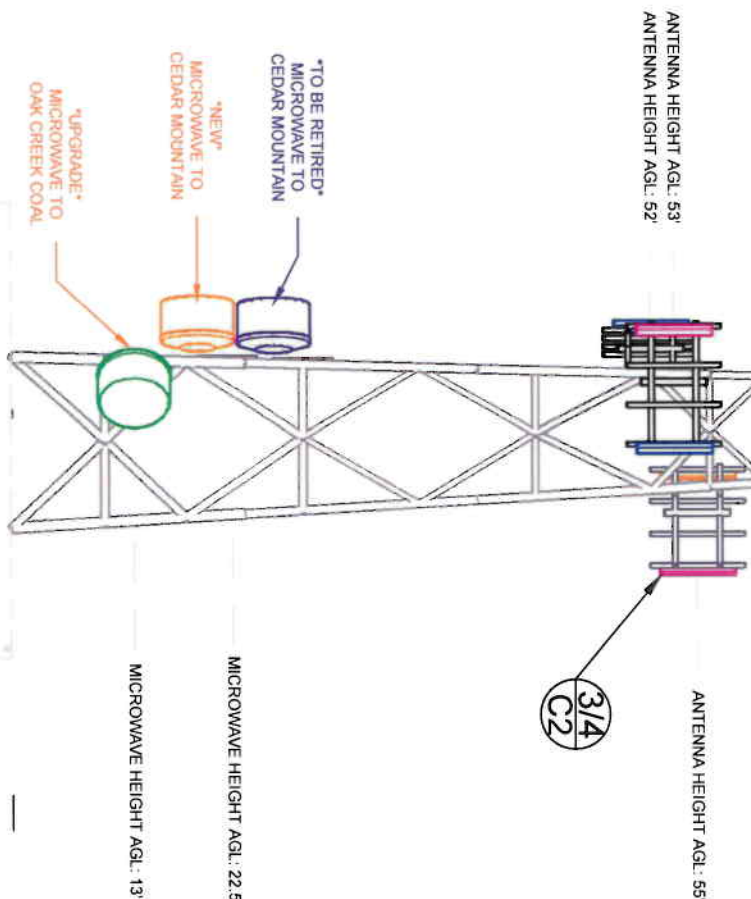


OVERALL TOWER HEIGHT AGL: 140'

GENERAL NOTES

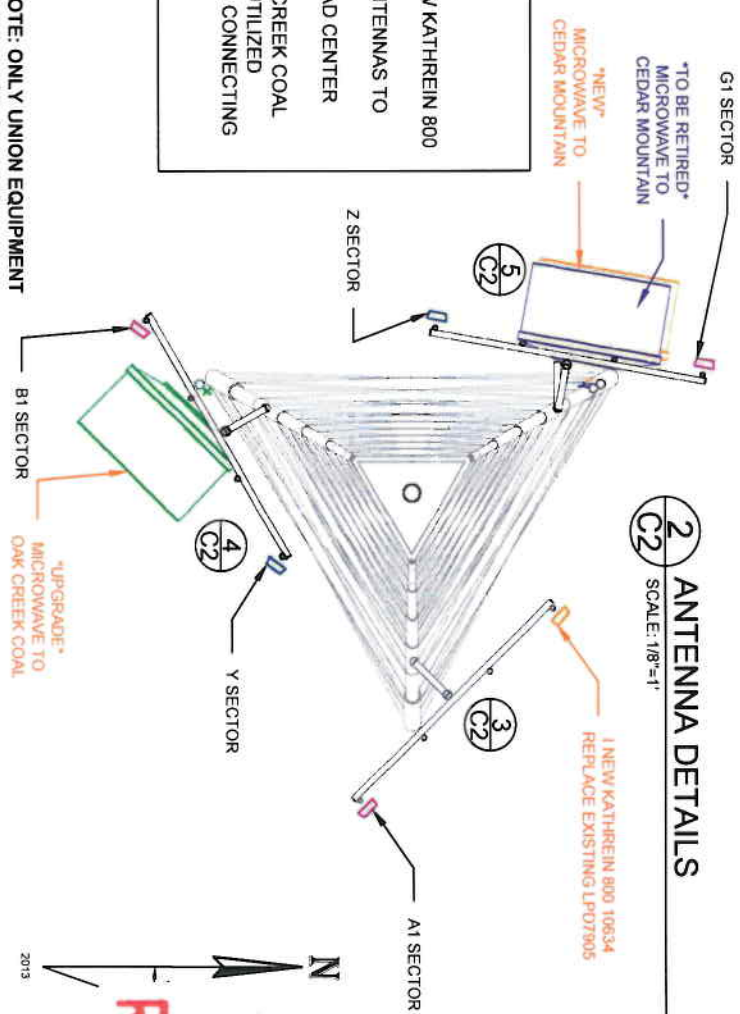
4. TOWER MODIFICATIONS:
- REPLACE THE X-SECTOR LPD 7905 ANTENNA WITH A NEW KATHREIN 800 10634 ANTENNA.
 - INSTALL (6X) NEW COAXIAL CABLES FROM THE PANEL ANTENNAS TO THE A-PORT, A, B
 - INSTALL NEW DISH AND (1X) LINE OF EW-90 AT THE 15' RAD CENTER UNDER THE EXISTING CEDAR MOUNTAIN DISH.
 - INSTALL (2X) LINES OF EW-63 TO THE EXISTING OAK CREEK COAL DISH. PLEASE NOTE THAT ONE POLARIZATION WILL BE UTILIZED INITIALLY. THE OTHER WILL TAKE A NIGHT CUT PRIOR TO CONNECTING TO THE DISH.

For Tower Landing Specs
Refer to the Station!
Analysis Report performed by
GPD Group on 12/16/2015
Project # 2016-238, 09874, 04
4/29/2016
afg



1 SOUTH FACE ELEVATION
SCALE: 1/16"=1'

2 ANTENNA DETAILS
SCALE: 1/8"=1'



3 ANTENNA DETAILS

X SECTOR	
ANTENNA MANUFACTURER & MODEL	1X KATHREIN 800 10634
AZIMUTH	50° MAG (60° TRUE)
HEIGHT ABOVE CONCRETE LEVEL	55'
TECHNOLOGY 690-960 MHz PORTS	GSM/850 / SHARED RRU
DOWNTILT 690-960 MHz PORTS	0° MECH, 3° ELEC
COAX SPECS 690-960 MHz PORTS	(1X) AVA5-50A, 1 CAPPED PORT
TECHNOLOGY 1710-2170 MHz PORTS	NA
DOWNTILT 1710-2170 MHz PORTS	NA
COAX SPECS 1710-2170 MHz PORTS	NA

A1 SECTOR	
ANTENNA MANUFACTURER & MODEL	1X KATHREIN 800 10634
AZIMUTH	50° MAG (60° TRUE)
HEIGHT ABOVE CONCRETE LEVEL	55'
TECHNOLOGY 690-960 MHz PORTS	UMTS/850 / SHARED RRU
DOWNTILT 690-960 MHz PORTS	0° MECH, 3° ELEC
COAX SPECS 690-960 MHz PORTS	(1X) AVA5-50A, 1 CAPPED PORT
TECHNOLOGY 1710-2170 MHz PORTS	NA
DOWNTILT 1710-2170 MHz PORTS	NA
COAX SPECS 1710-2170 MHz PORTS	NA

4 ANTENNA DETAILS

Y SECTOR	
ANTENNA MANUFACTURER & MODEL	1X KATHREIN 800 10634
AZIMUTH	130° MAG (140° TRUE)
HEIGHT ABOVE CONCRETE LEVEL	53'
TECHNOLOGY 690-960 MHz PORTS	GSM/850 / SHARED RRU
DOWNTILT 690-960 MHz PORTS	0° MECH, 3° ELEC
COAX SPECS 690-960 MHz PORTS	(1X) AVA5-50A, 1 CAPPED PORT
TECHNOLOGY 1710-2170 MHz PORTS	NA
DOWNTILT 1710-2170 MHz PORTS	NA
COAX SPECS 1710-2170 MHz PORTS	NA

B1 SECTOR	
ANTENNA MANUFACTURER & MODEL	1X KATHREIN 800 10634
AZIMUTH	130° MAG (140° TRUE)
HEIGHT ABOVE CONCRETE LEVEL	53'
TECHNOLOGY 690-960 MHz PORTS	UMTS/850 / SHARED RRU
DOWNTILT 690-960 MHz PORTS	0° MECH, 3° ELEC
COAX SPECS 690-960 MHz PORTS	(1X) AVA5-50A, 1 CAPPED PORT
TECHNOLOGY 1710-2170 MHz PORTS	NA
DOWNTILT 1710-2170 MHz PORTS	NA
COAX SPECS 1710-2170 MHz PORTS	NA

5 ANTENNA DETAILS

Z SECTOR	
ANTENNA MANUFACTURER & MODEL	1X KATHREIN 800 10634
AZIMUTH	270° MAG (280° TRUE)
HEIGHT ABOVE CONCRETE LEVEL	52'
TECHNOLOGY 690-960 MHz PORTS	GSM/850 / SHARED RRU
DOWNTILT 690-960 MHz PORTS	0° MECH, 2° ELEC
COAX SPECS 690-960 MHz PORTS	(1X) AVA5-50A, 1 CAPPED PORT
TECHNOLOGY 1710-2170 MHz PORTS	NA
DOWNTILT 1710-2170 MHz PORTS	NA
COAX SPECS 1710-2170 MHz PORTS	NA

G1 SECTOR	
ANTENNA MANUFACTURER & MODEL	1X KATHREIN 800 10634
AZIMUTH	270° MAG (280° TRUE)
HEIGHT ABOVE CONCRETE LEVEL	52'
TECHNOLOGY 690-960 MHz PORTS	UMTS/850 / SHARED RRU
DOWNTILT 690-960 MHz PORTS	0° MECH, 5° ELEC
COAX SPECS 690-960 MHz PORTS	(1X) AVA5-50A, 1 CAPPED PORT
TECHNOLOGY 1710-2170 MHz PORTS	NA
DOWNTILT 1710-2170 MHz PORTS	NA
COAX SPECS 1710-2170 MHz PORTS	NA

Union
W I R E L E S S
850 N. HIGHWAY 414
PO BOX 160
MOUNTAIN VIEW, WY 82939

THE INFORMATION CONTAINED IN THIS DOCUMENT IS PROPRIETARY. ANY USE OR DISCLOSURE OTHER THAN THOSE AUTHORIZED BY UNION TELEPHONE COMPANY IS STRICTLY PROHIBITED.

CURRENT REV	DATE
F	09/25/2015

DESIGNER
ALYSSA BLAIR/ANGELA JONES
REVIEWER
MATTHEW E. FISHER

APPROVED
FOR
CONSTRUCTION
2 DECEMBER 2015



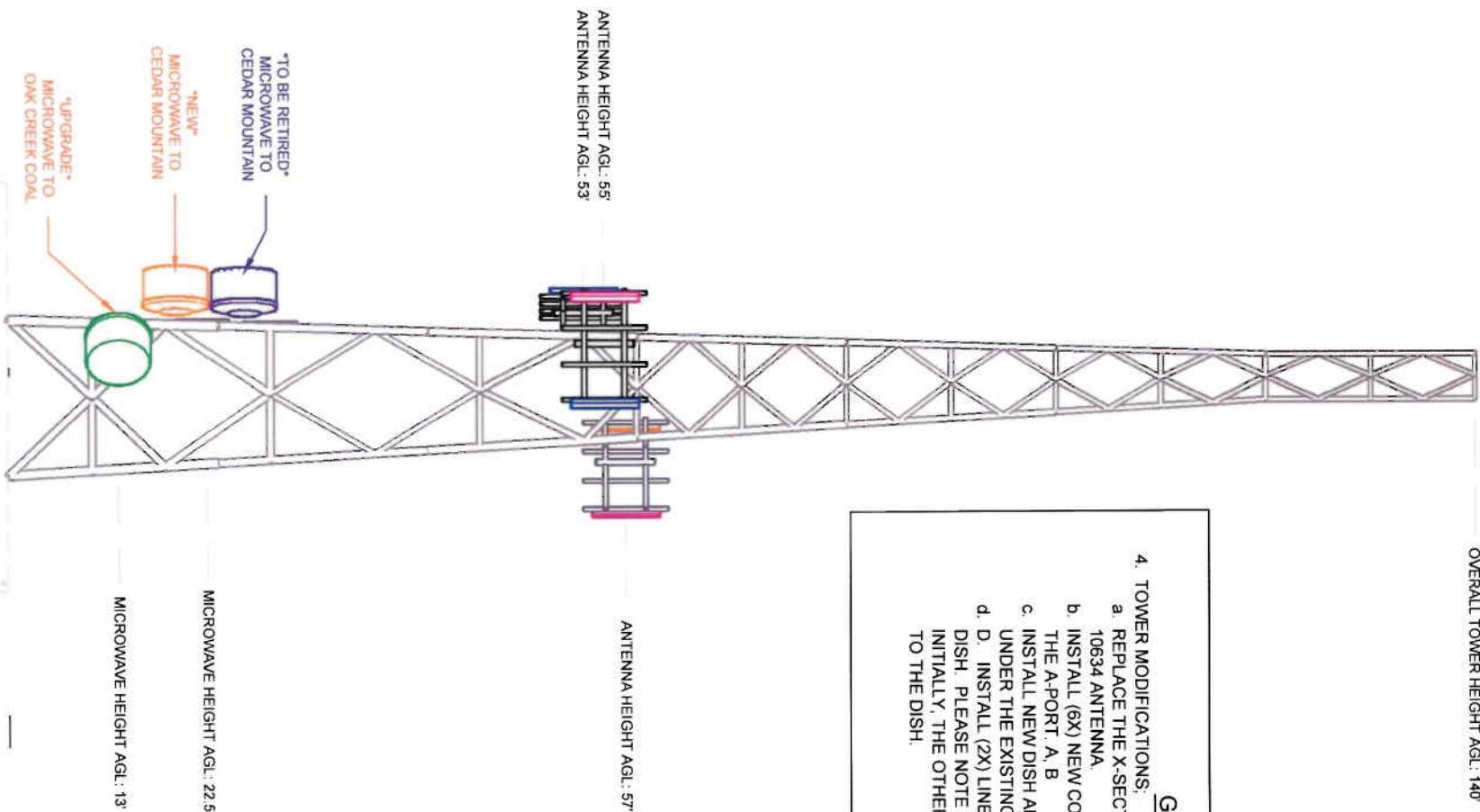
HAYDEN

6985 HOMESTEADER LANE 2
HAYDEN, ROUTT COUNTY, COLORADO

PANEL ANTENNA ELEVATION

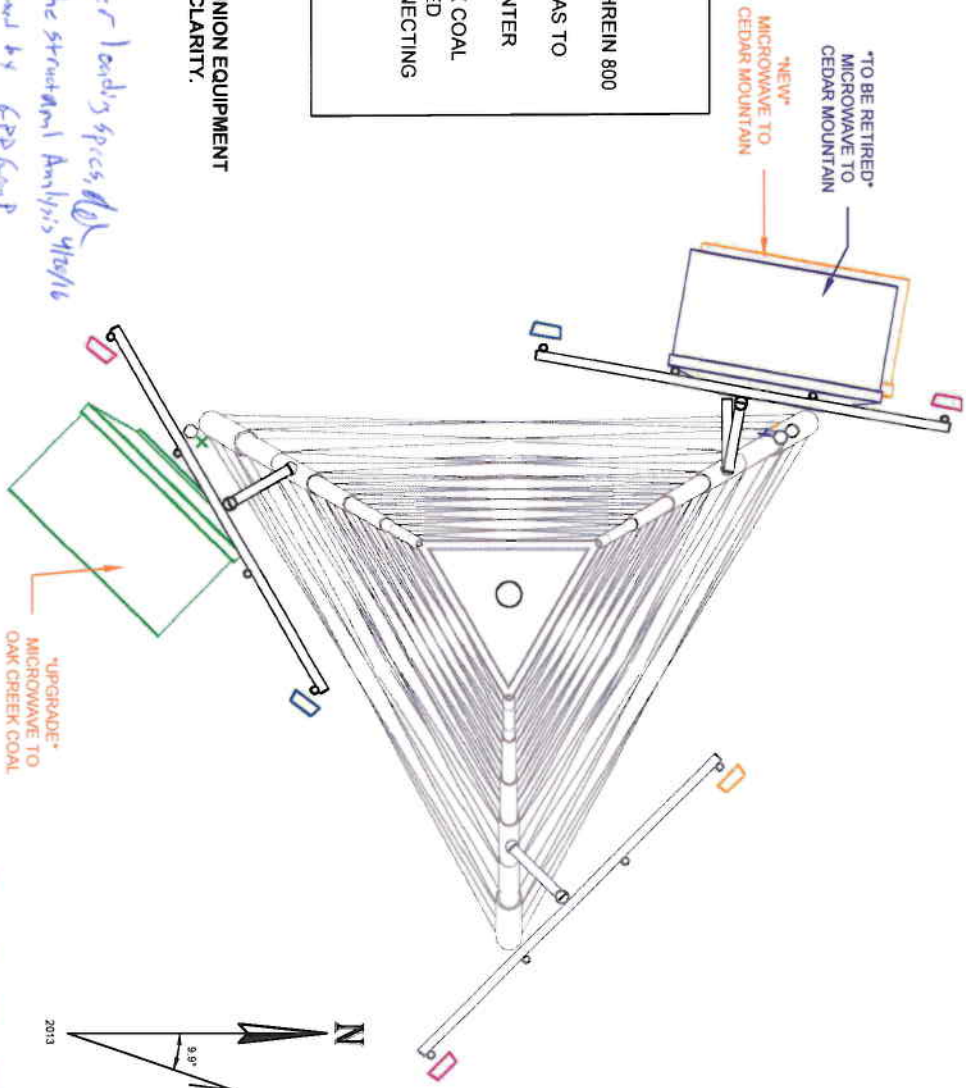
OVERALL TOWER HEIGHT AGL: 140'

- GENERAL NOTES**
4. TOWER MODIFICATIONS:
- REPLACE THE X-SECTOR LPD 7905 ANTENNA WITH A NEW KATHREIN 800 10634 ANTENNA
 - INSTALL (6X) NEW COAXIAL CABLES FROM THE PANEL ANTENNAS TO THE A-PORT A, B
 - INSTALL NEW DISH AND (1X) LINE OF EW-90 AT THE 15' RAD CENTER UNDER THE EXISTING CEDAR MOUNTAIN DISH.
 - D. INSTALL (2X) LINES OF EW-63 TO THE EXISTING OAK CREEK COAL DISH. PLEASE NOTE THAT ONE POLARIZATION WILL BE UTILIZED INITIALLY. THE OTHER WILL TAKE A NIGHT CUT PRIOR TO CONNECTING TO THE DISH.



1 SOUTH FACE ELEVATION
SCALE: 1/16"=1'

PLEASE NOTE: ONLY UNION EQUIPMENT SHOWN FOR CLARITY.



For tower body specs, refer to the structural analysis 4/16/16 Report Prepared by GPP Group 01/2/16/2015 Project# 2016-738, 08/24/14

2 ANTENNA DETAILS
SCALE: 3/16"=1'

MW TO CEDAR MTN		MW TO CEDAR MTN		MW TO OAK CREEK COAL	
ANTENNA MANUFACTURER & MODEL:	HP6-107, VERTICAL	ANTENNA MANUFACTURER & MODEL:	HP6-107, VERTICAL	ANTENNA MANUFACTURER & MODEL:	HPX8-65-P6A
AZIMUTH:	271° MAG (280.8° TRUE)	AZIMUTH:	271° MAG (280.8° TRUE)	AZIMUTH:	125° MAG (134.6° TRUE)
HEIGHT ABOVE CONCRETE LEVEL:	21.5'	HEIGHT ABOVE CONCRETE LEVEL:	21.5'	HEIGHT ABOVE CONCRETE LEVEL:	12'
POLARIZATION:	Tx-V, Rx-V	POLARIZATION:	Tx-V, Rx-V	POLARIZATION:	Tx-V&H, Rx-V&H
TECHNOLOGY/FREQUENCY/SHARED:	LICENSED 11 GHz	TECHNOLOGY/FREQUENCY/SHARED:	LICENSED 11 GHz	TECHNOLOGY/FREQUENCY/SHARED:	LICENSED 6 GHz
WAVEGUIDE SPECIFICATIONS:	(1X) EW90 FEED	WAVEGUIDE SPECIFICATIONS:	(1X) EW90 FEED	WAVEGUIDE SPECIFICATIONS:	(2X) EW63 FEEDLINES

R C R B D
RECORD SET

LEGEND

☐ NEW

☐ TO BE RETIRED

Union
W I R E L E S S
850 N. HIGHWAY 414
PO BOX 160
MOUNTAIN VIEW, WY 82939

THE INFORMATION CONTAINED IN THIS DOCUMENT IS PROPRIETARY. ANY USE OR DISCLOSURE OTHER THAN THOSE AUTHORIZED BY UNION TELEPHONE COMPANY IS STRICTLY PROHIBITED.

CURRENT REV	DATE
F	09/25/2015

DESIGNER
ALYSSA BLAIR/ANGELA JONES

REVIEWER
MATTHEW E. FISHER

APPROVED
FOR
CONSTRUCTION
2 DECEMBER 2015



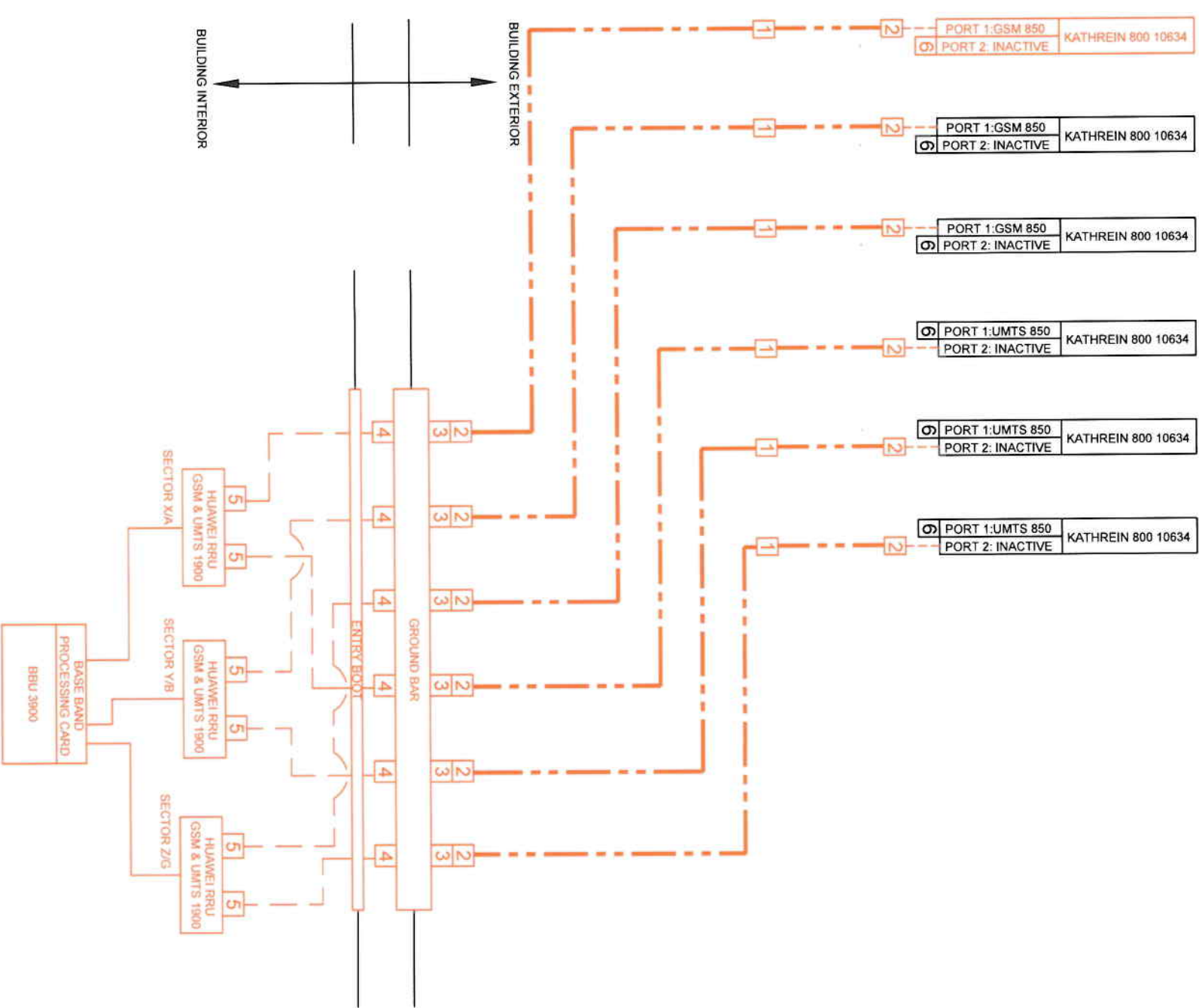
HAYDEN

PROJECT ADDRESS
6985 HOMESTEADER LANE 2
HAYDEN, ROUTT COUNTY, COLORADO

SHEET TITLE
MICROWAVE ELEVATION

SHEET NUMBER
C-3

SECTOR X SECTOR Y SECTOR Z SECTOR A1 SECTOR B1 SECTOR G1



1 RAN CABLING DIAGRAM
SCALE: NO SCALE
R1

GENERAL NOTES

1. WORK ALREADY COMPLETE:
 - a. PARTITION WALL, HVAC, AND MAIN AC ELECTRICAL EQUIPMENT INSTALLED (EXCLUDING DC PLANT), FLOOR PAINTED.
2. NEW A-PORT & ICE BRIDGE:
 - a. INSTALL A NEW ICE BRIDGE BETWEEN THE ENTRY BOOT AND THE TOWER. THE NEW WAVEGUIDE LADDER WILL BE INSTALLED AROUND THE OLD SHELTER AND BACK TO THE TOWER. PLEASE CONNECT THE DIRECT BURIAL PIPES TO THE GROUND SYSTEM VIA PIPE CLAMP.
 - b. USE THE EXISTING ENTRY BOOT FOR THE NEW LINES AND MW. THIS WILL REQUIRE GROUNDING WITH GROUND BARS AND BFDS FOR THE COAX.
3. ELECTRONICS SHELTER INSTALLS:
 - a. INSTALL CABLE LADDERS.
 - b. INSTALL DC PLANT PER THE CDS. WIRE IN AC POWER TO THE DC PLANT.
 - c. INSTALL RACKS, HUAWEI CABINET, AND TELLABS 8611 ROUTERS.
 - d. INSTALL NEW MW RADIOS FOR THE UPGRADED PATHS - THIS SHOULD INCLUDE RACK MOUNTED ODUS AND (2X) MODEMS PER HOP.
4. TOWER MODIFICATIONS:
 - a. REPLACE THE X-SECTOR LPD 7905 ANTENNA WITH A NEW KATHREIN 800 10634 ANTENNA.
 - b. INSTALL (6X) NEW COAXIAL CABLES FROM THE PANEL ANTENNAS TO THE A-PORT. A, B
 - c. INSTALL NEW DISH AND (1X) LINE OF EW-90 AT THE 15' RAD CENTER UNDER THE EXISTING CEDAR MOUNTAIN DISH.
 - d. INSTALL (2X) LINES OF EW-63 TO THE EXISTING OAK CREEK COAL DISH. PLEASE NOTE THAT ONE POLARIZATION WILL BE UTILIZED INITIALLY. THE OTHER WILL TAKE A NIGHT CUT PRIOR TO CONNECTING TO THE DISH.
5. NEW MW PATH TO CEDAR MOUNTAIN - CUT:
 - a. [MAINTENANCE] CUT UTC-OWNED AC POWER FROM OLD EQUIPMENT BUILDING.
 - b. COMMISSION NEW RADIO ON NEW DISH.
 - c. CUT TRAFFIC TO NEW RADIO ON VERTICAL RF CHANNEL INITIALLY.
 - d. DECOMMISSION & REMOVE THE NLTTEL MICROWAVE RADIO. RETURN TO WH.
 - e. COMMISSION FULL PATH.
6. NEW MW PATH TO OAK CREEK COAL - CUT:
 - a. CUT TRAFFIC TO NEW RADIO ON VERTICAL RF CHANNEL.
 - b. DECOMMISSION & REMOVE THE NLTTEL MICROWAVE RADIO FROM THE HORIZONTAL RF CHANNEL.
 - c. REMOVE EW63 OLD BUILDING.
 - d. CONFIGURE TRAFFIC TO RUN ON BOTH VERTICAL & HORIZONTAL RF CHANNELS.
 - e. COMMISSION FULL PATH.
7. RETIREMENTS:
 - a. RETIRE THE OLD CEDAR MOUNTAIN MW DISH AND ASSOCIATED LINES AS WELL AS THE LPD 7905 PANEL ANTENNA AND 7/8" LINES FROM THE TOWER.
 - b. RETIRE THE OLD ELECTRONICS FROM THE OLD EQUIPMENT SHELTER.
 - c. PLEASE PERFORM AN AUDIT OF THE EXISTING CPRS SIMPLY STATING WHAT IS PRESENT ON SITE TODAY ON THE EXISTING EXCEL SHEET.

R C R B D
RECORD SET

LEGEND	
	LAA-PDMDM-3 (1X) 7/8" DIAMETER COAX
	LDF4-50A 1/2" COAX
	RRU FIBER
	1-5/8" GROUND KIT
	UXP-Df-78
	RLSA-Z61-60HK566-S00N1
	JMA UXP-DM-12
	JMA UXP-DRA-12
	ANTENNA CAP
	NEW



THE INFORMATION CONTAINED IN THIS DOCUMENT IS PROPRIETARY. ANY USE OR DISCLOSURE OTHER THAN THOSE AUTHORIZED BY UNION TELEPHONE COMPANY IS STRICTLY PROHIBITED.

CURRENT REV	DATE
F	09/25/2015

DESIGNER
ALYSSA BLAIR/ANGELA JONES

REVIEWER
MATTHEW E. FISHER

APPROVED
FOR
CONSTRUCTION
2 DECEMBER 2015



HAYDEN

PROJECT ADDRESS

6985 HOMESTEADER LANE 2
HAYDEN, ROUTT COUNTY, COLORADO

SHEET TITLE

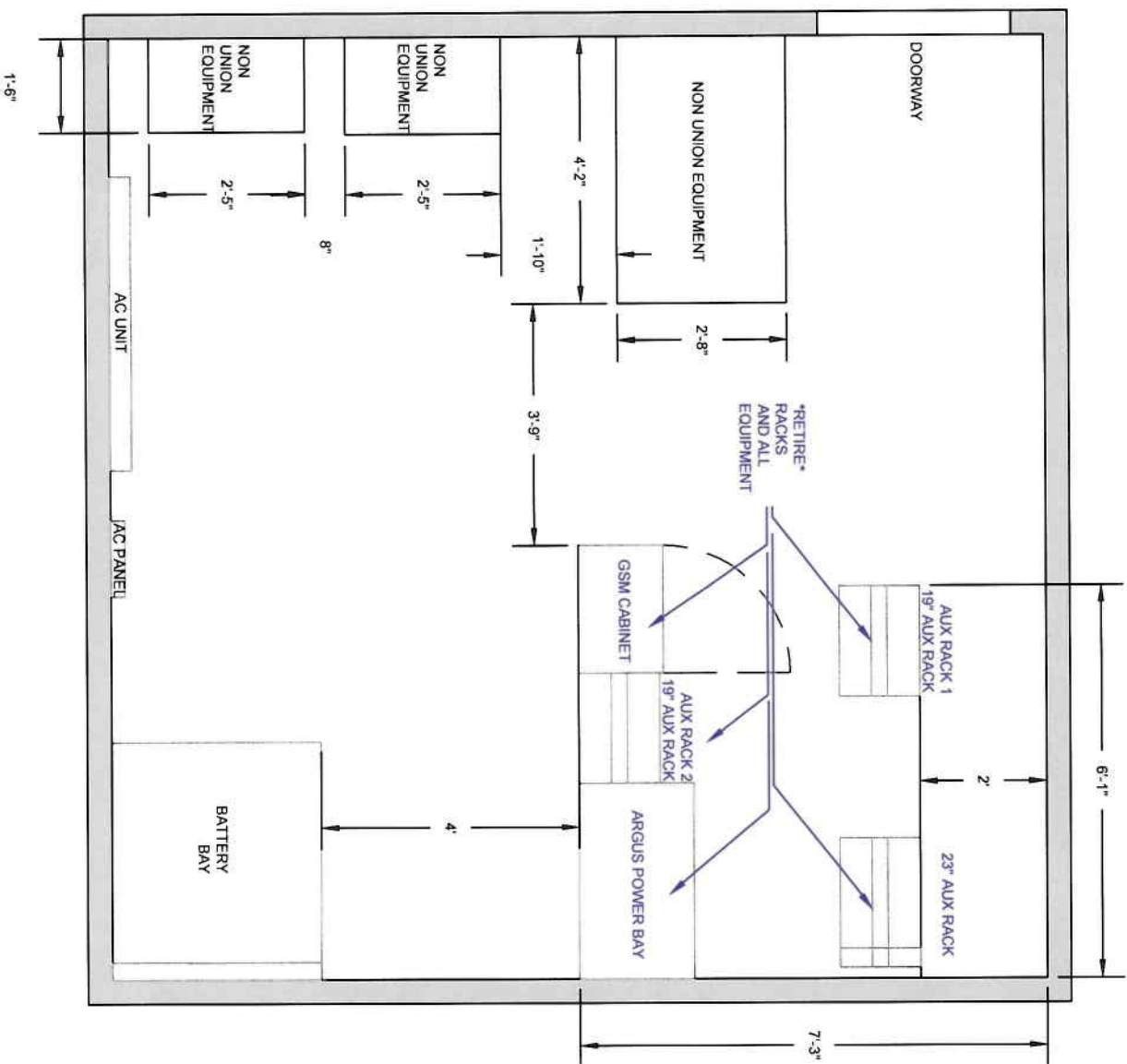
RAN CABLING DIAGRAM

SHEET NUMBER

R1

GENERAL NOTES

7. RETIREMENTS:
- a. RETIRE THE OLD CEDAR MOUNTAIN MW DISH AND ASSOCIATED LINES AS WELL AS THE LPD 7905 PANEL ANTENNA AND 7/8" LINES FROM THE TOWER.
 - b. RETIRE THE OLD ELECTRONICS FROM THE OLD EQUIPMENT SHELTER
 - c. PLEASE PERFORM AN AUDIT OF THE EXISTING CPRS SIMPLY STATING WHAT IS PRESENT ON SITE TODAY ON THE EXISTING EXCEL SHEET.



1 COMMUNICATION SITE FLOOR PLAN
A1 SCALE: 3"=8'

R C R B D
RECORD SET



THE INFORMATION CONTAINED IN THIS DOCUMENT IS PROPRIETARY. ANY USE OR DISCLOSURE OTHER THAN THOSE AUTHORIZED BY UNION TELEPHONE COMPANY IS STRICTLY PROHIBITED.

CURRENT REV	DATE
B	09/25/2015

DESIGNER
AL YSSA BLAIR/ANGELA JONES

REVIEWER
MATT E. FISHER

APPROVED
FOR
CONSTRUCTION



HAYDEN

PROJECT ADDRESS

6985 HOMESTEADER LANE 2
HAYDEN, ROUTT COUNTY, COLORADO

SHEET TITLE

OLD EQUIPMENT
BUILDING LAYOUT
(TO BE RETIRED)

SHEET NUMBER

A1

GENERAL NOTES

3. ELECTRONICS SHELTER INSTALLS:

a. INSTALL CABLE LADDERS.

b. INSTALL DC PLANT PER THE CDS. WIRE IN AC POWER TO THE DC PLANT.

c. INSTALL RACKS, HUAWEI CABINET, AND TELLABS 8611 ROUTERS.

d. D. INSTALL NEW MW RADIOS FOR THE UPGRADED PATHS - THIS SHOULD INCLUDE RACK-MOUNTED ODUS AND (2X) MODEMS PER HOP.

5. NEW MW PATH TO CEDAR MOUNTAIN - CUT.

a. [MAINTENANCE] CUT UTC-OWNED AC POWER FROM OLD EQUIPMENT BUILDING.

b. COMMISSION NEW RADIO ON NEW DISH

c. CUT TRAFFIC TO NEW RADIO ON VERTICAL RF CHANNEL INITIALLY.

d. DECOMMISSION & REMOVE THE NLITE-L MICROWAVE RADIO. RETURN TO WM.

e. COMMISSION FULL PATH.
6. NEW MW PATH TO OAK CREEK COAL - CUT.

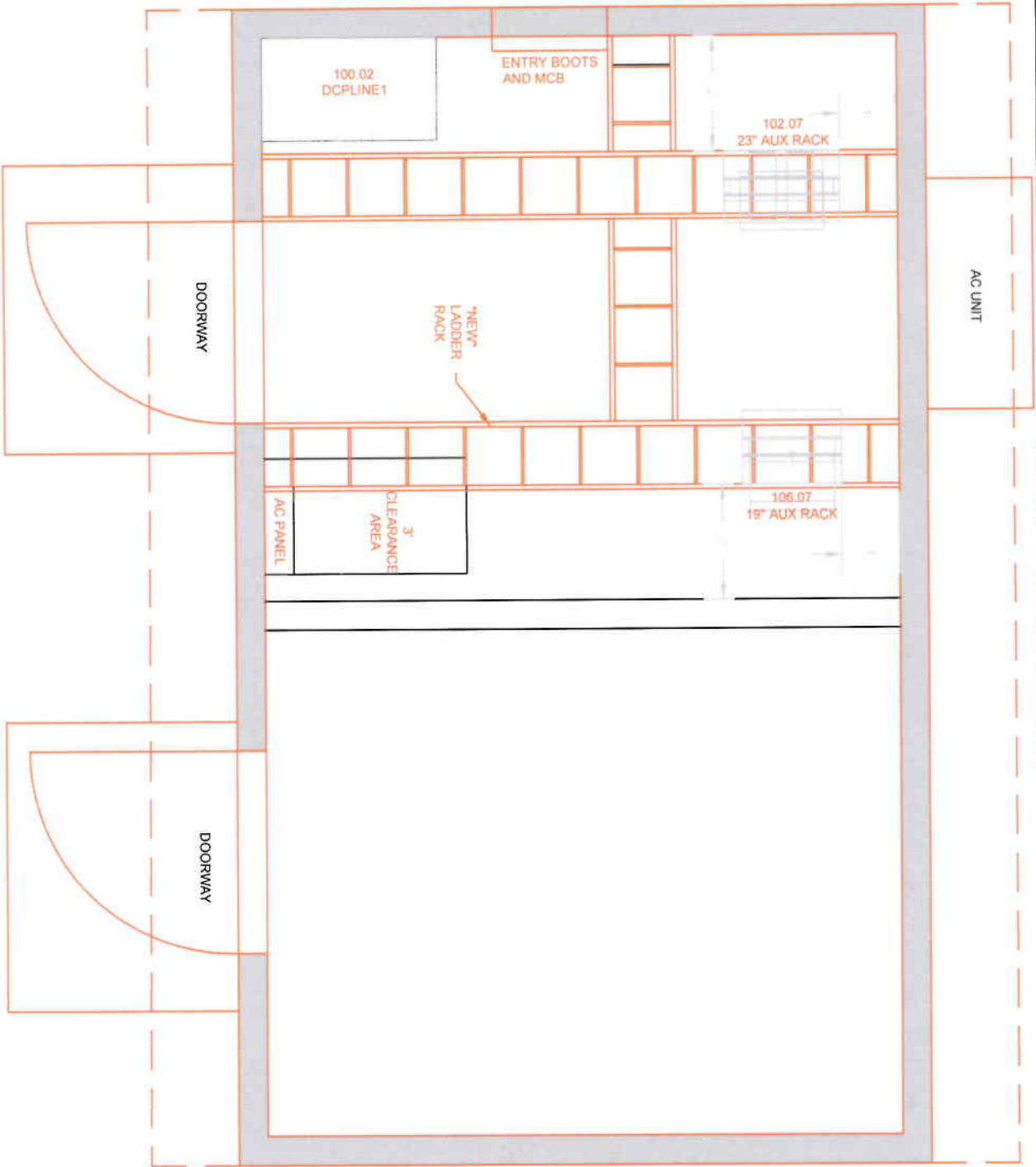
e. CUT TRAFFIC TO NEW RADIO ON VERTICAL RF CHANNEL.

f. DECOMMISSION & REMOVE THE NLITE-L MICROWAVE RADIO FROM THE HORIZONTAL RF CHANNEL.

g. REMOVE EW63 OLD BUILDING.

h. CONFIGURE TRAFFIC TO RUN ON BOTH VERTICAL & HORIZONTAL RF CHANNELS.

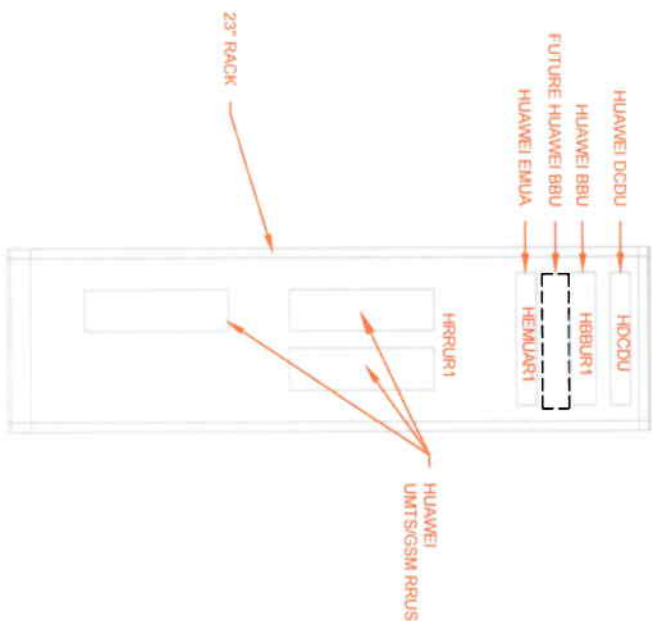
i. COMMISSION FULL PATH.



1 COMMUNICATION SITE FLOOR PLAN

SCALE: 3"=8'

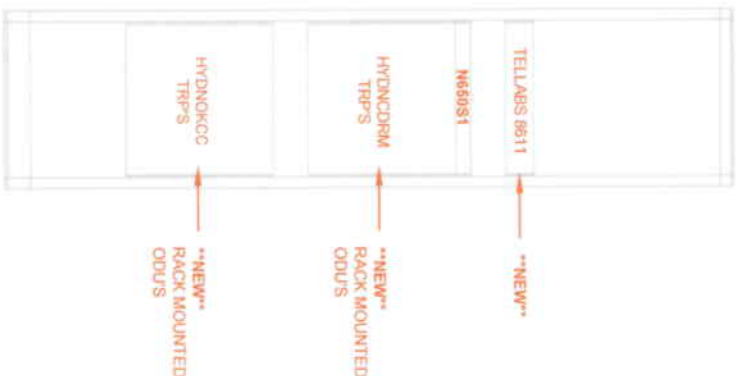
A2



2 102.07 - 23" AUX RACK

SCALE: 1"=2'

NOTE: PLEASE PROVIDE HEIGHT MEASUREMENTS IN AS BUILT'S



3 106.07 - 19" AUX RACK

SCALE: 1"=2'

A2

NOTE: PLEASE PROVIDE HEIGHT MEASUREMENTS IN AS BUILT'S



THE INFORMATION CONTAINED IN THIS DOCUMENT IS PROPRIETARY. ANY USE OR DISCLOSURE OTHER THAN THOSE AUTHORIZED BY UNION TELEPHONE COMPANY IS STRICTLY PROHIBITED.

CURRENT REV	DATE
B	09/25/2015

DESIGNER
ALYSSA BLAIR/ANGELA JONES

REVIEWER
MATT E. FISHER

APPROVED
FOR
CONSTRUCTION
2 DECEMBER 2015



HAYDEN

PROJECT ADDRESS

6985 HOMESTEADER LANE 2,
HAYDEN, ROUTT COUNTY, COLORADO

SHEET TITLE

NEW EQUIPMENT
BUILDING LAYOUT

SHEET NUMBER

A2



850 N. HIGHWAY 414
PO BOX 160
MOUNTAIN VIEW, WY 82939

THE INFORMATION CONTAINED IN THIS DOCUMENT IS PROPRIETARY. ANY USE OR DISCLOSURE OTHER THAN THOSE AUTHORIZED BY UNION TELEPHONE COMPANY IS STRICTLY PROHIBITED.

CURRENT REV	DATE
A	11/15/15

DESIGNER: ANGELA JONES

REVIEWER: MATTHEW FISHER



APPROVED
FOR
CONSTRUCTION

HAYDEN

PROJECT ADDRESS:

6985 HOMESTEADER LANE 2
HAYDEN, ROUTT COUNTY, COLORADO

SHEET TITLE:

PANEL SCHEDULE

SHEET NUMBER: E1

P1 200A, 120/240VAC, 1Ø/3W												
Load	Volt Amper A	B	Wire	Breaker		Breaker		Wire	Volt Amper A	B	Load	
				P	Trip	Trip	P					
H/VAC	3420		10	2	40	1	2	20	2	12	1680	Lineage Rectifier
		3420	10		40	3	4	20	2	12	1680	
Lights	560		12	1	20	5	6	20	2	12	1680	Lineage Rectifier
Receptacles		540	12	1	20	7	8	20	2	12	1680	
Lineage Rectifier	1680		12	2	20	9	10	20	2	12	0	Spare
		1680	12		20	11	12	20	2	12	0	
Lineage Rectifier	1680		12	2	20	13	14	20	2	12	0	Spare
		1680	12		20	15	16	20	2	12	0	
Spare	0		12	2	20	17	18	20	2	12	0	Spare
		0	12		20	19	20	20	2	12	0	
Spare	0		12	2	20	21	22	20	2	12	0	Spare
		0	12		20	23	24	20	2	12	0	
Spare	0		12	2	20	25	26	20	2	12	0	Spare
		0	12		20	27	28	20	2	12	0	
Space	-		-	-	-	29	30	-	-	-	-	Space
Space	-		-	-	-	31	32	-	-	-	-	Space
Volt Amperes Per Phase			7340	7320						3360	3360	Volt Amperes Per Phase
						10700	10680				Total Volt Amperes	
						89	89				Total Amps Per Phase	
						111					Amps x 125%	
						122					x 110% for Main	

1 PANEL SCHEDULE
E1 SCALE: NO SCALE

RCRBD
RECORD SET