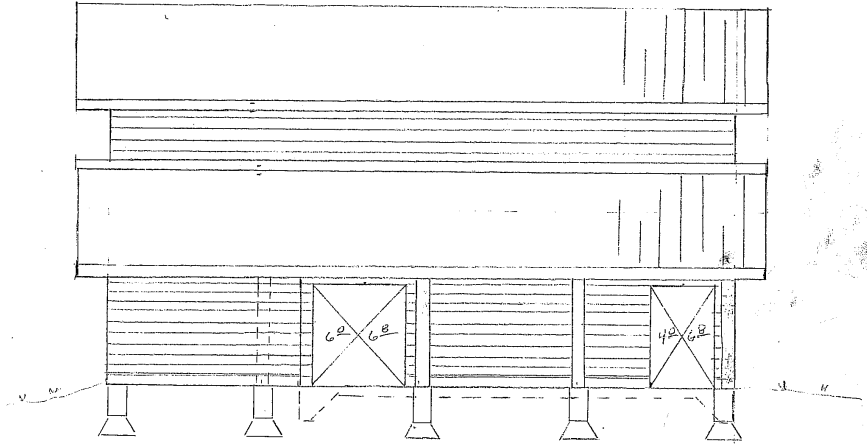
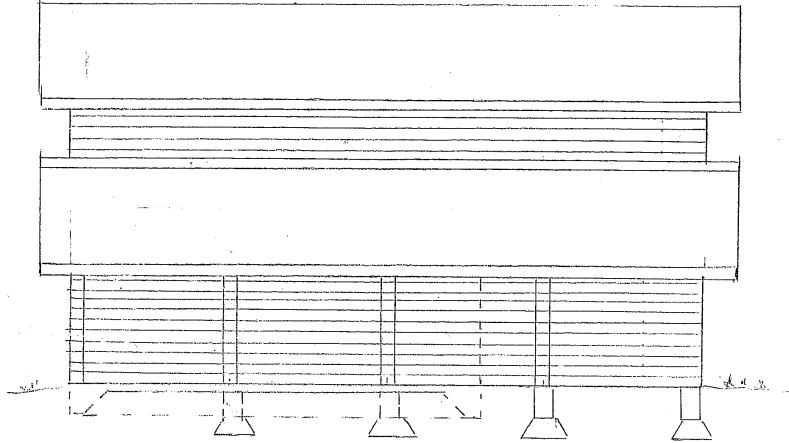


CLAY CROSS BARRITY
5/22/07
3/16 = 1'0"

COPY #2

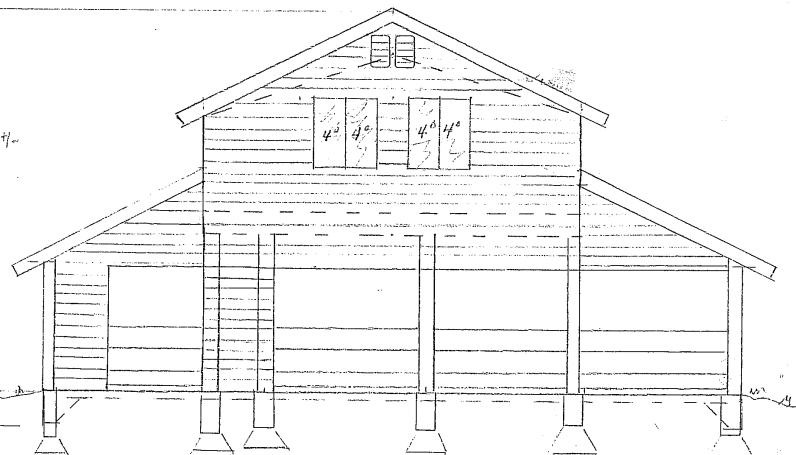
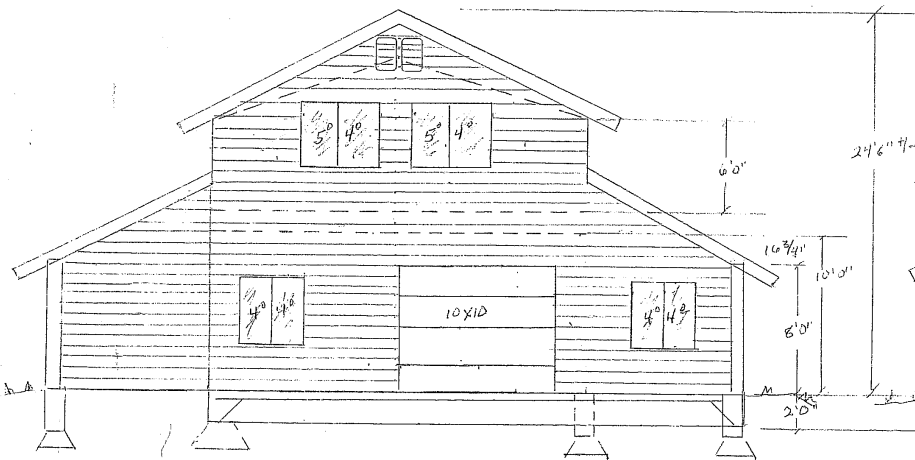
WEST

EAST



NORTH

SOUTH

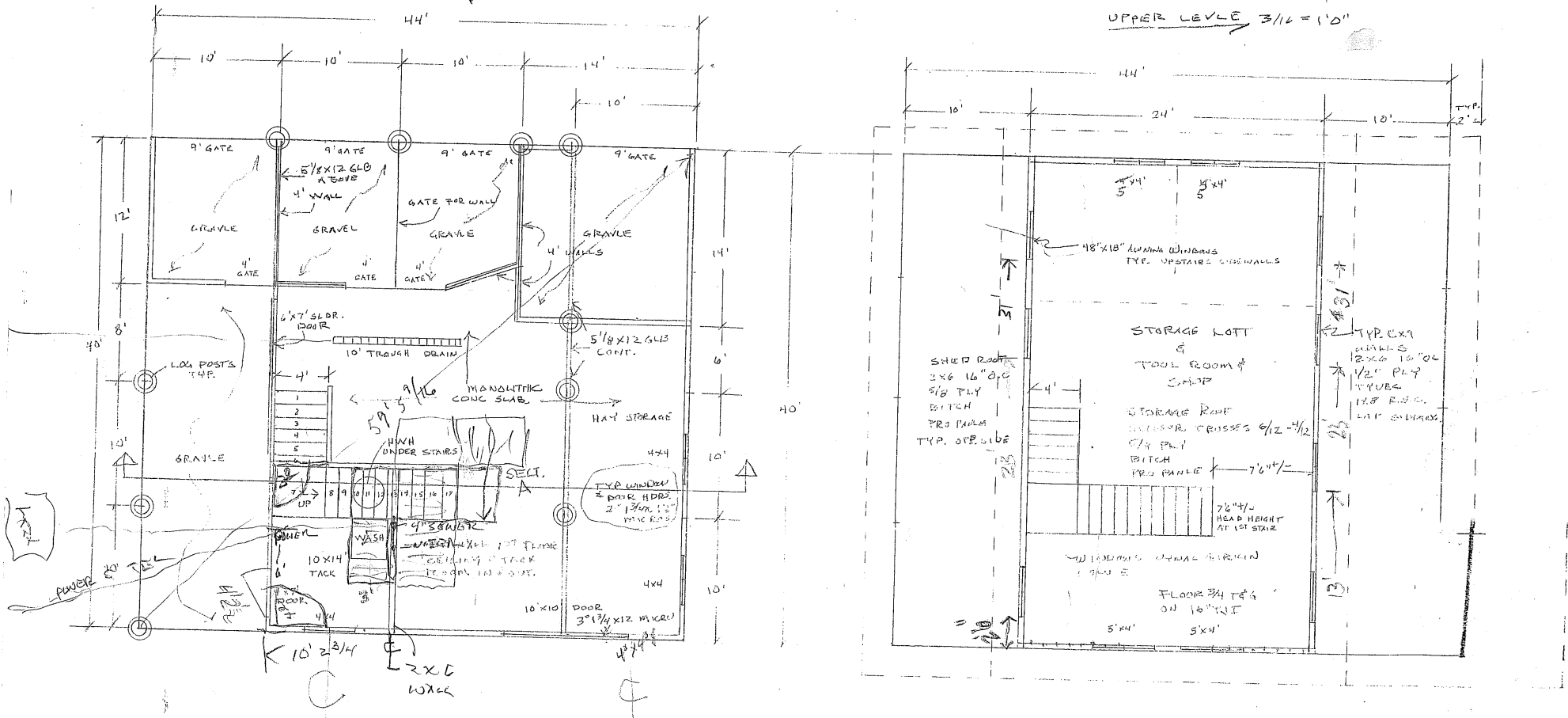


CROSS GIBERTY
5/22/07
3/16" = 1"0"

COPY #3

MAIN LEVEL 3/16" = 1"0"

UPPER LEVEL 3/16" = 1"0"



48' 18"
44' 1/2"

CLAY & RUSS GARBITH
SECTION 1/4" = 1'0"
5/22/07

COPY # 4

SECTION A

IT SHOWS 5/8" GWB ON THE FLOOR CEILING

