

2 SITE PLAN
NOT A CERTIFIED PLAT - BASED ON SURVEY BY FOUR POINTS ENGINEERING AND SURVEYING DATED: 03.06.2020

SCALE: 1" = 20'-0"

LEGAL DESCRIPTION

OF LOT A, NRFPD MINOR DEVELOPMENT SUBDIVISION EXEMPTION
LOCATED IN SECTION 19 AND SECTION 24, TOWNSHIP 10 NORTH,
RANGE 85 WEST OF THE 6TH P.M., ROUTT COUNTY, COLORADO

CODE STUDY

Re: 2015 IBC, 2015 IEBC, CITY OF S.S. COMMUNITY DEVELOPMENT CODE

ZONING: AF

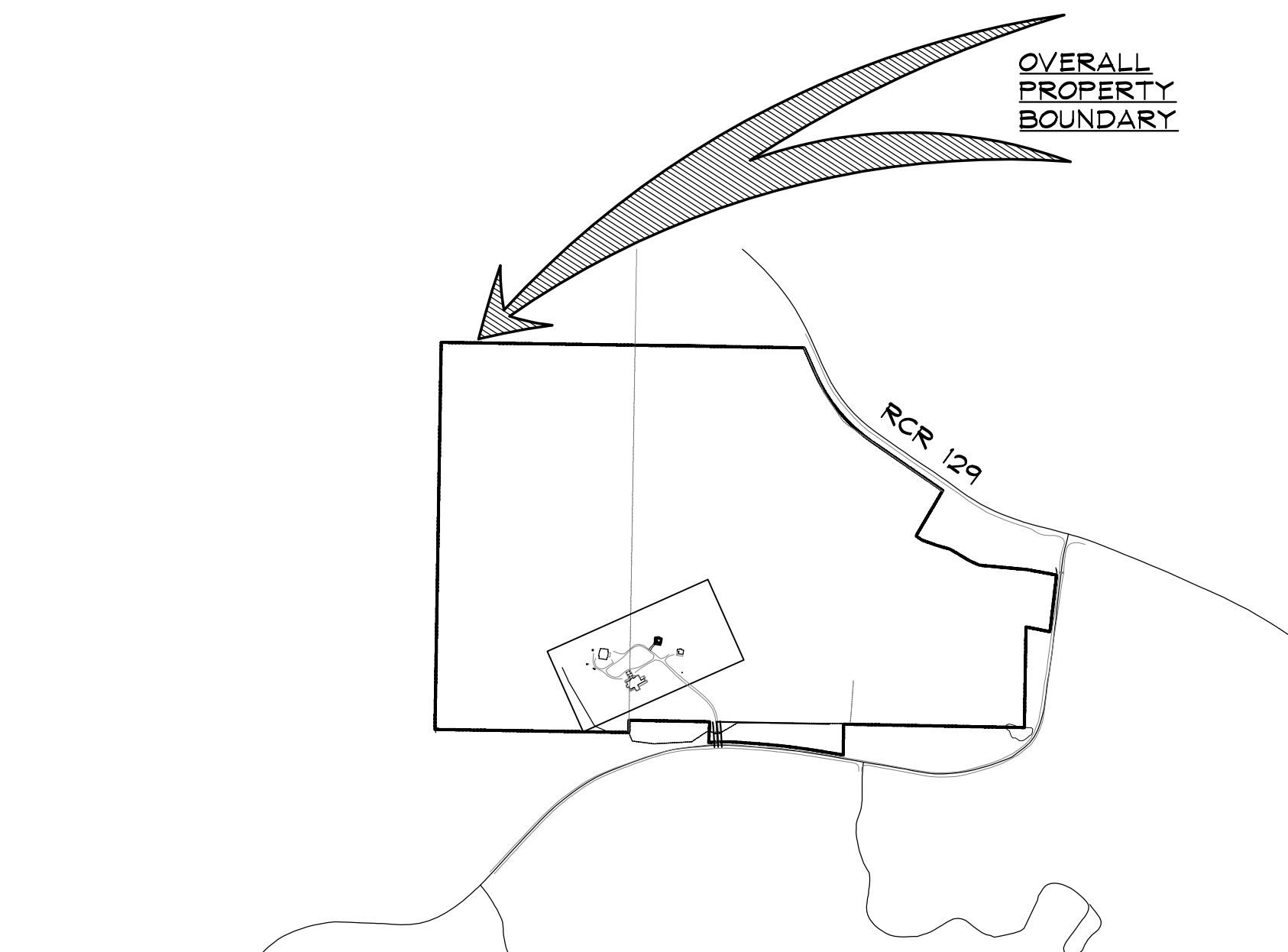
CONSTRUCTION TYPE: V-B

OCCUPANCY CLASSIFICATION: GROUP R-3

NO. STORIES: 1

SIZE OF LOT: 897,8151.6 SQ. FT.

BUILDING HEIGHT: (40' MAX. ALLOWED)



1 VICINITY MAP
1" = 1000'



SEAD

Steamboat Engineering And Design, Inc.
2740 Acre Lane Suite 'E' Steamboat Springs, CO 80487
Phone: 970.871.9101 Fax: 970.871.9089
E-mail: Jake@seadinc.com

SNOWY MNT. RANCH CABIN

6/6/25 RCR 62

ROUTT COUNTY, COLORADO

A NEW GUEST CABIN FOR:

SNOWY MOUNTAIN RANCH

ISSUE DATES	
PERMIT SET	12 . 31 . 20
REVISION 1	01 . 21 . 21
REVISION 2	01 . 27 . 21

DRAWN BY: KLN
REVIEWED BY: CJM
PROJECT # 20118
SITE & UTILITY
PLAN, VICINITY
MAP & CODE STUDY