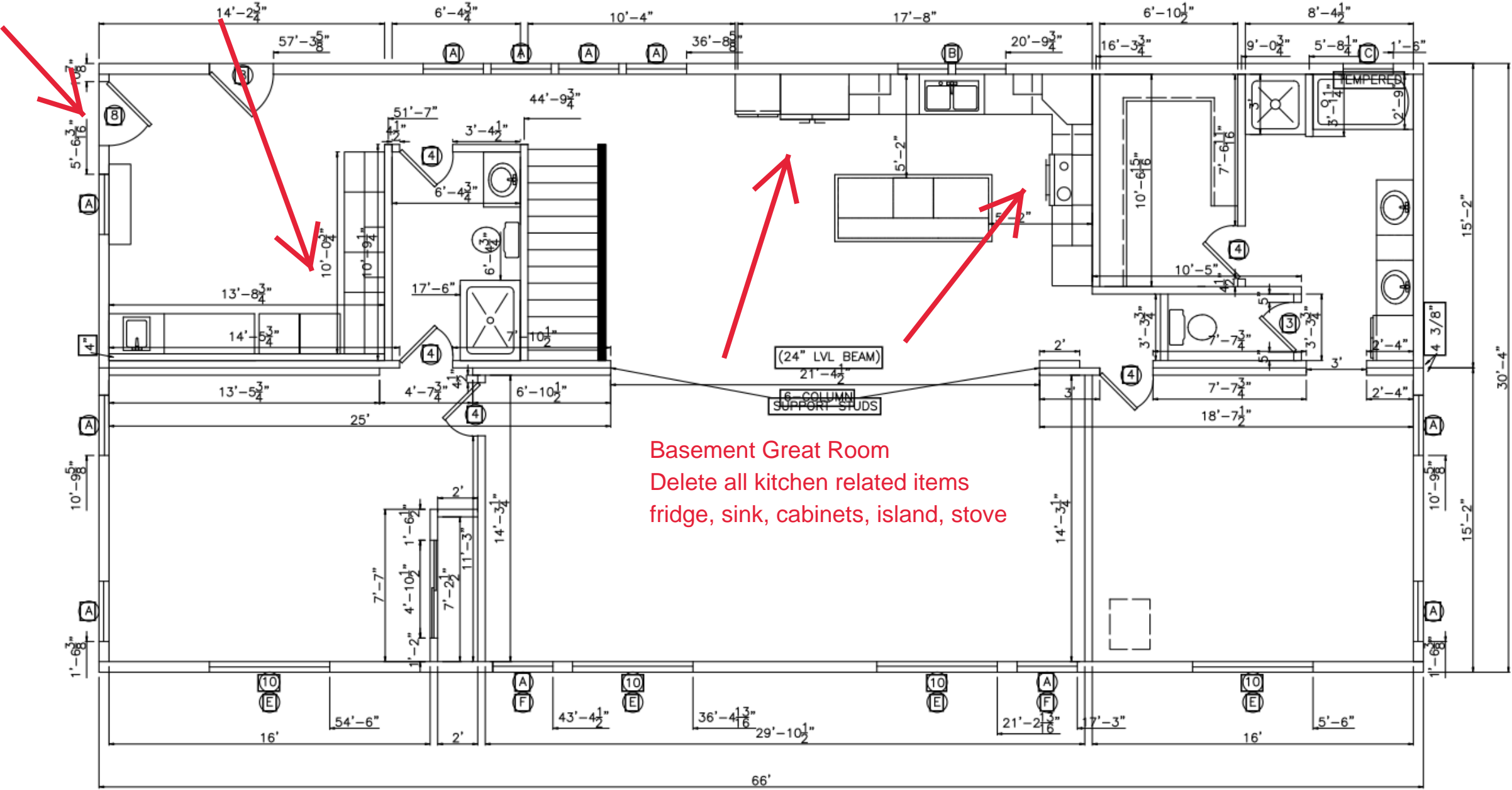


Basement Utility Room:
Delete exterior door, window, cabinets
sinks, will be an open space for mechanical equipment



Reviewed for
Code Compliance

06/06/2022

Basement Great Room
Delete all kitchen related items
fridge, sink, cabinets, island, stove

WINDOW SCHEDULE R.O.	
(A)	36" x 60" (EGRESS)
(B)	30" x 48" (SAFETY GLAZED ABOVE TUB)
(C)	30" x 18 1/2" (TRANSOM)
(D)	30" x 12 1/2" (TRANSOM)
(E)	72" x 18 1/2" (TRANSOM)
(F)	36" x 18 1/2" (TRANSOM)
(G)	72" x 60" (EGRESS)

DOOR SCHEDULE R.O.	
(1)	1'-7 3/4" SOLID CORE
(2)	2'-1 3/4" SOLID CORE
(3)	2'-5 3/4" SOLID CORE
(4)	2'-7 3/4" SOLID CORE
(5)	3'-1 3/4" SOLID CORE
(6)	38" x 81 3/4" FIRE DOOR
(7)	51 3/4" x 82 1/4" STEEL DOOR w/SIDELITE
(8)	38 1/4" x 82 1/4" STEEL DOOR
(9)	65 1/4" x 82 1/4" STEEL DOOR w/DBL SIDELITES
(10)	72" x 80" FRENCH DOOR/S.G.D.

HOME IS TO BE CONSTRUCTED TO
THE FOLLOWING CODES:
2015 IECC
2018 IRC
2020 NEC
45 PSF ROOF LOAD
40 PSF FLOOR LOAD
WIND SPEED = 126 MPH Vult
GROUP R DIVISION 3

ALL WALLS ARE 9'-0" TALL
RETURN AIR THRU CEILING (RA)
WINDOWS UP 34" FROM FLOOR
DOUBLE TOP PLATES @ M.W. & S.W.

FAMILY BUILT HOMES			
P.O. BOX 657, GERING, NEBRASKA 69341			
SCALE	N.T.S.	DATE	9-30
DRAWN	JC	CHECKED	HEITER
TITLE	MODEL		DRAWING NO.
FLOOR PLAN		FB-SHD3266	
DATE	REVISION	BY	SHEET