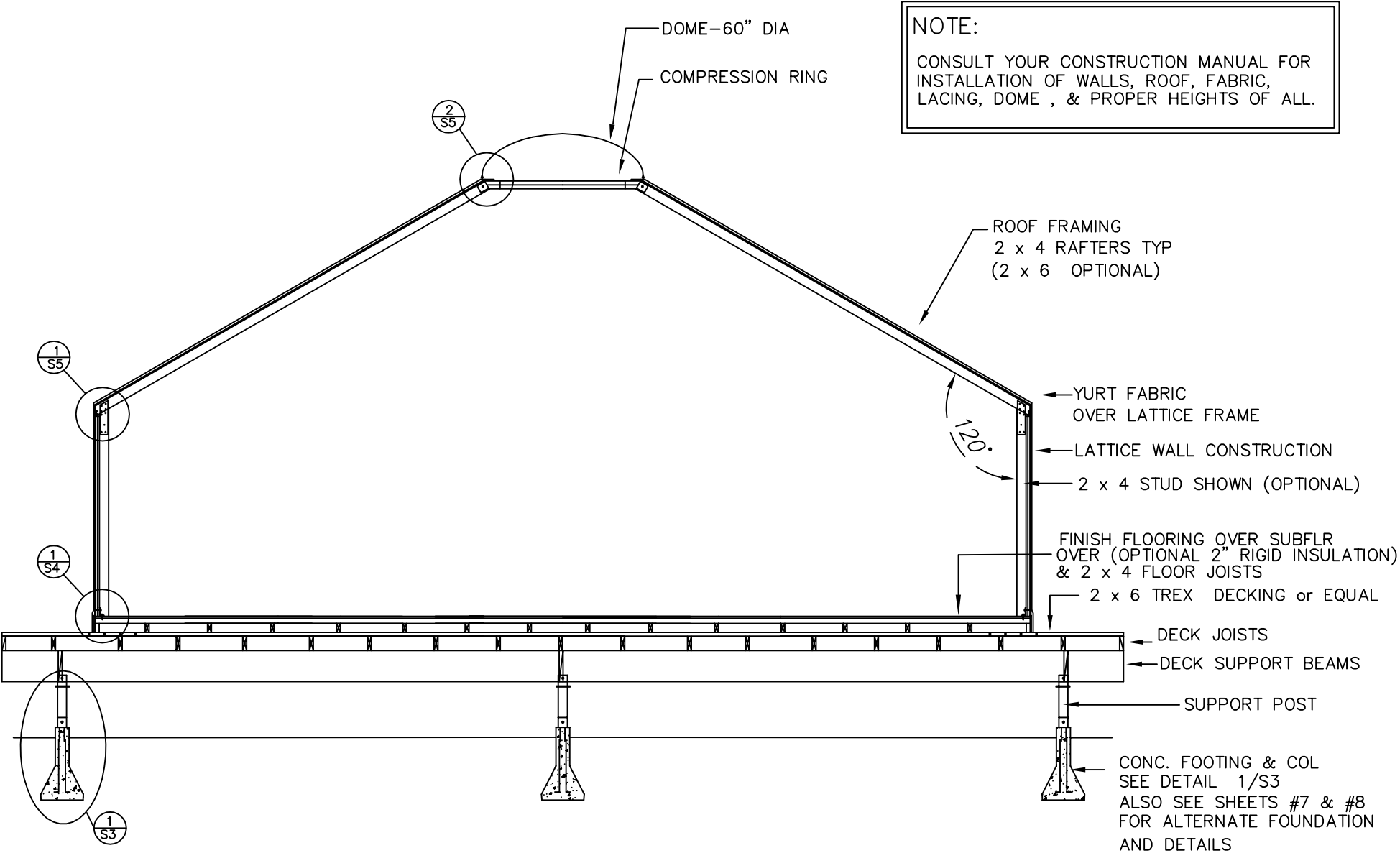
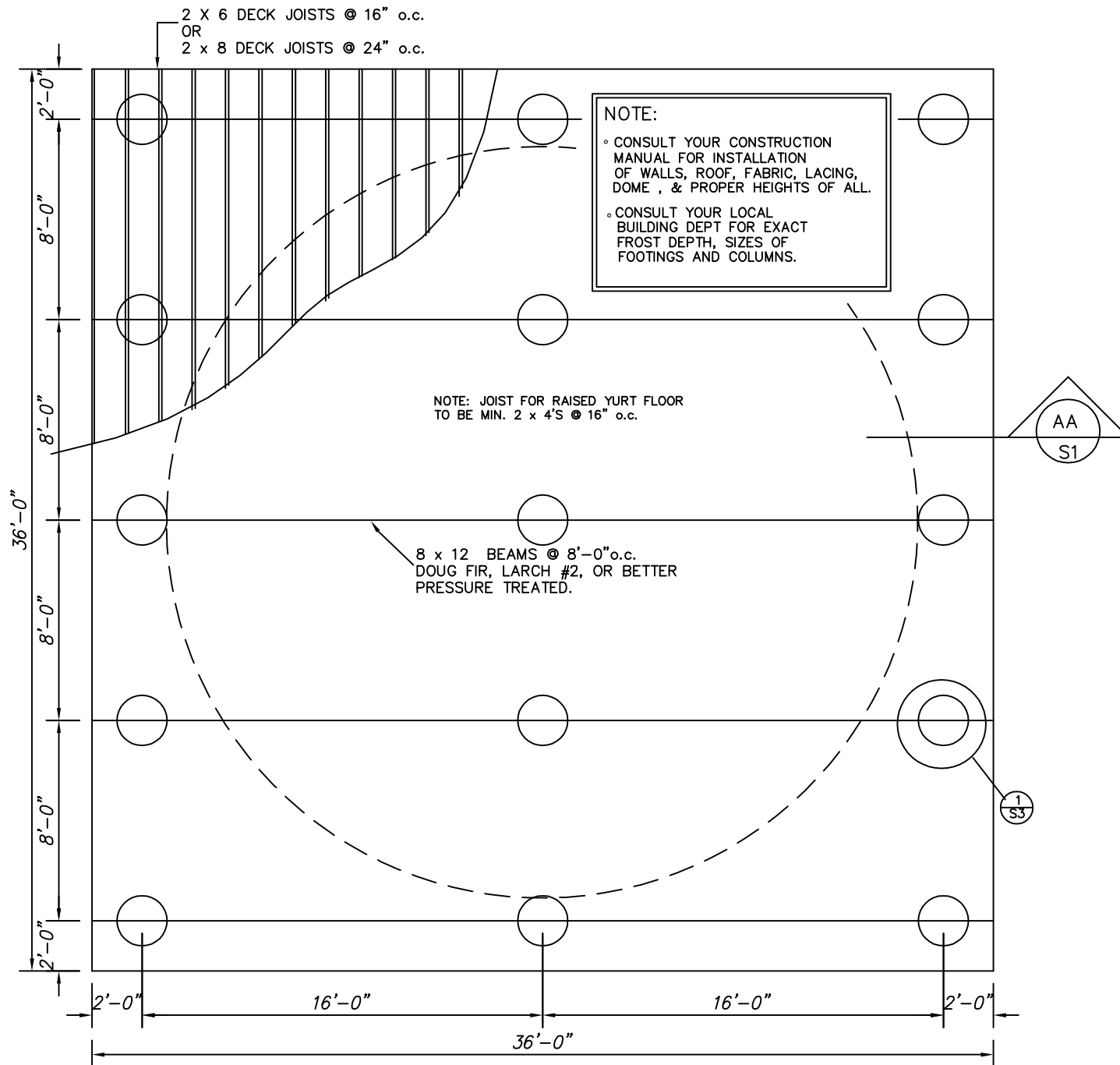


COLORADO YURT COMPANY - 30ft OVERSIZED YURT DECK PLANS





30' YURT FOUNDATION/FLOOR PLAN

SHEET #2

TREX DECKING OR EQUAL  
SECURE PER MANUFACTURER  
SPECIFICATIONS

2 x DECK JOISTS  
2 x SOLID BLOCKING @ BRG PTS

SIMPSON PC @ EA POST/BEAM  
CONNECTION

SUPPORT POST @ EA. PIER  
SIZE TO MATCH BEAM WIDTH TYP

FINISHED GRADE

FROST DEPTH  
SEE NOTES

SIMPSON PB  
POST BASE CONNECTOR - or  
EPBxxT POST BASE CONNECTOR -  
ALLOWS YOU TO ADJUST HEIGHT OF POST  
REFER TO MFR INSTALLATION INFO

(2) #4 BAR IN CONC  
8" Ø MIN. CONC COL CAST IN  
10" Ø MIN. SONOTUBE FORM W/  
CONCRETE FOOTING SEE 28" DIA  
"BIGFOOT" or EQUAL  
CASTING PRODUCT INFO  
AVAILABLE @ LOCAL LUMBER CO.

1 TYP. DETAIL

# NOTE:

- ° CONSULT YOUR CONSTRUCTION MANUAL FOR  
INSTALLATION OF WALLS, ROOF, FABRIC,  
LACING, DOME , & PROPER HEIGHTS OF ALL.
- ° CONSULT YOUR LOCAL BUILDING DEPT  
FOR EXACT FROST DEPTH,  
SIZES OF FOOTINGS AND COLUMNS.

OPTIONAL ALTERNATE FOUNDATION PLANS &  
DETAILS - SEE SHEETS #6 & #7 FOR INFO

SUPPORT POST TYP  
SIZE TO MATCH BEAM WIDTH TYP

FROST DEPTH  
SEE NOTES

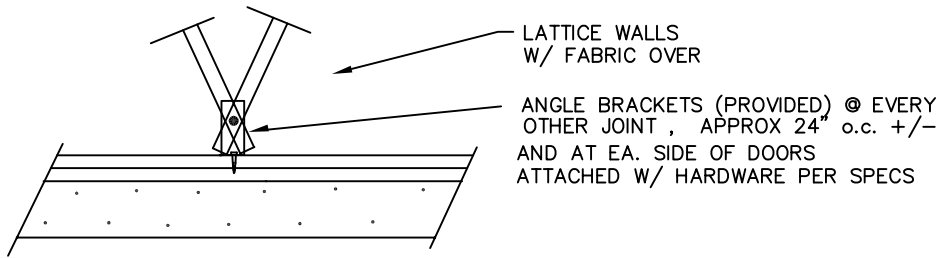
10" Ø SONOTUBE  
CONCRETE FILLED COLUMN  
(2) #4 BAR IN CONC

24" x 24" x 12" DEEP  
CONC. FOOTINGS  
w/ (2) #4 REBAR EA. WAY  
3" CLR FROM  
BOTTOM & SIDES

2 ALT. DETAIL

TYPICAL FOUNDATION DETAIL

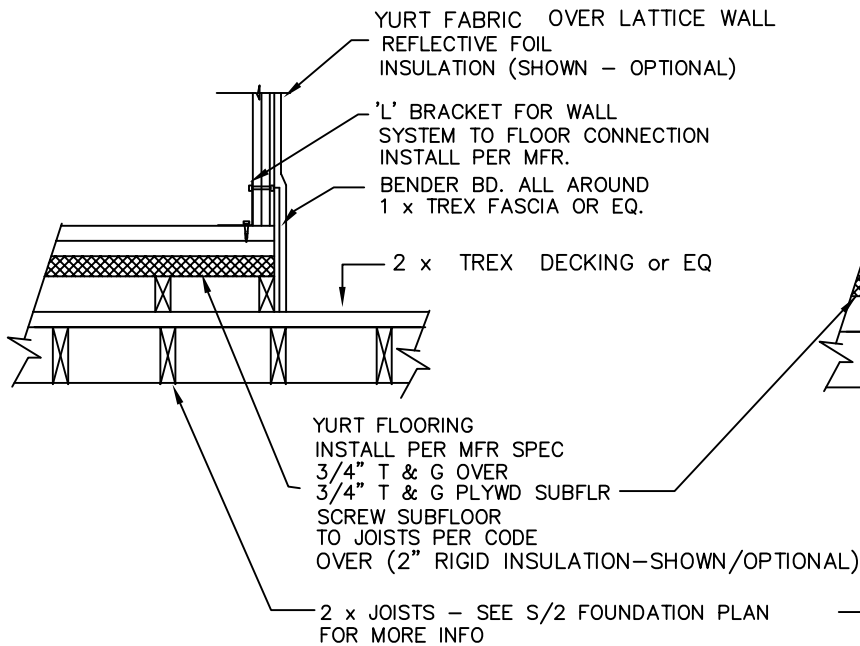
SHEET #3



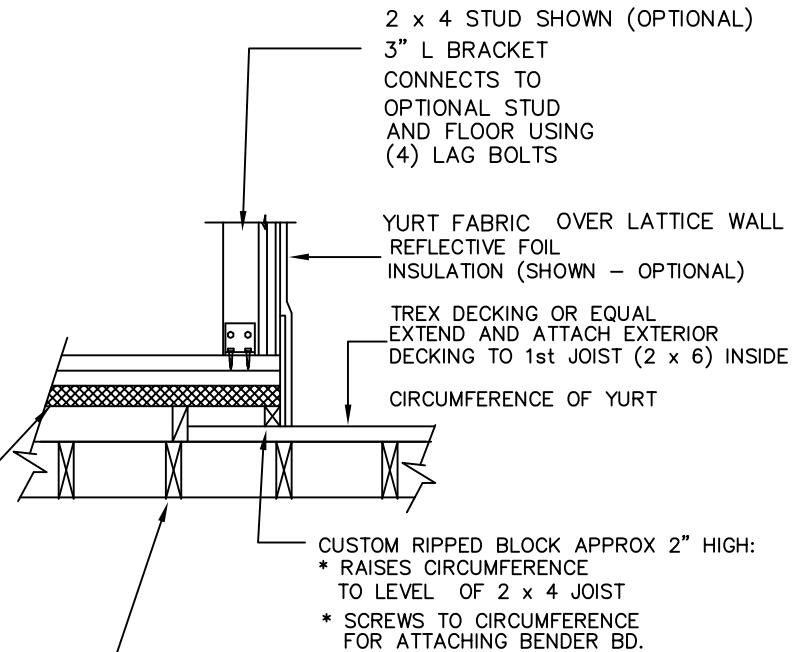
③ ——— D E T A I L  
LATTICE ATTACHMENT

NOTE:

CONSULT YOUR CONSTRUCTION MANUAL FOR  
INSTALLATION OF WALLS, ROOF, FABRIC,  
LACING, DOME , & PROPER HEIGHTS OF ALL.



① ——— T Y P . D E T A I L  
FLOOR/DECK CONNECTION



② ——— A L T . D E T A I L  
FLOOR/DECK CONNECTION  
ALSO REFER TO DETAIL 1/S6 FOR MORE INFO

YURT FLOOR & WALL SYSTEM

SHEET #4

FABRIC OVER RAFTER  
INSTALL PER MFR  
(INSULATION OPTIONAL)

ROOF FRAMING  
2 x 4 RAFTERS TYP  
(2 x 6 OPTIONAL)

YURT FABRIC  
OVER LATTICE WALL  
CONSTRUCTION

TRUSS PLATE (PROVIDED)– USE  
1 EACH SIDE OF STUD TYP.  
W/10 – #8 HEX HEAD SHEET METAL SCREWS  
AT EA. CONNECTION POINT  
W/ OPTIONAL STUD

2 x 4 STUD SHOWN (OPTIONAL)  
(INSULATION OPTIONAL)

# NOTE:

CONSULT YOUR CONSTRUCTION MANUAL FOR  
INSTALLATION OF WALLS, ROOF, FABRIC,  
LACING, DOME , & PROPER HEIGHTS OF ALL.

## 3 ALT. DETAIL WALL/RAFTER CONNECTION (SHOWING OPTIONAL STUD CONNECTION)

FABRIC OVER RAFTER  
INSTALL PER MFR  
(INSULATION OPTIONAL)

ROOF FRAMING  
2 x 4 RAFTERS TYP  
(2 x 6 OPTIONAL)

YURT FABRIC  
OVER LATTICE WALL  
CONSTRUCTION

TYPICAL CABLE AND SCREW  
CONNECTION (PROVIDED)

## 1 TYP. DETAIL WALL/RAFTER CONNECTION

DOME

COMPRESSION RING

RUBBER GASKET

FABRIC OVER RAFTERS  
INSTALL PER MFR  
(INSULATION OPTIONAL)

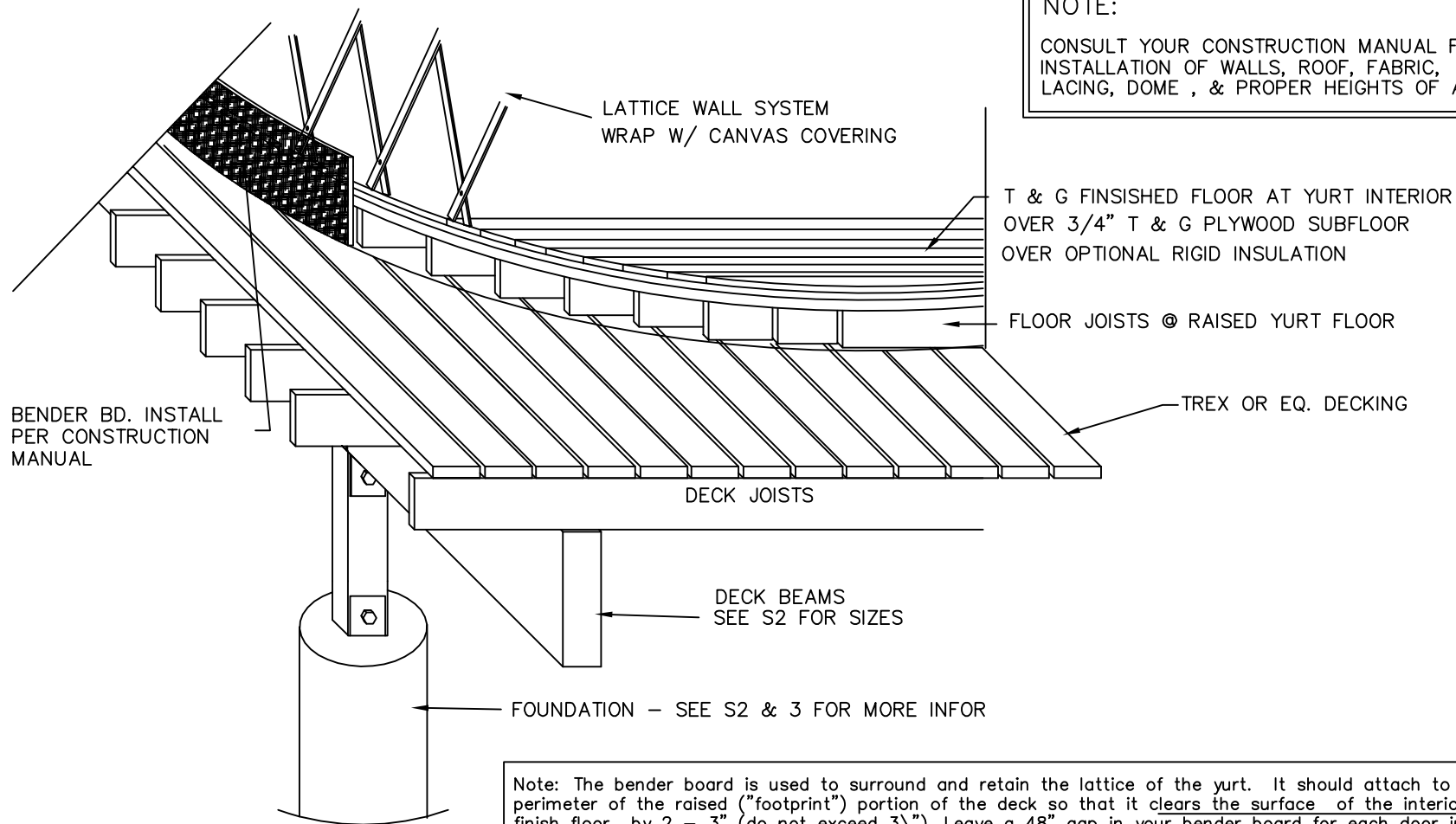
STND CORR  
CONNECTOR  
@ EA. RAFTER (OPTIONAL)

ROOF FRAMING  
2 x 4 RAFTERS TYP  
(2 x 6 OPTIONAL)

## 2 TYP. DETAIL RAFTER/DOME CONNECTION

YURT RAFTER DETAILS

SHEET #5

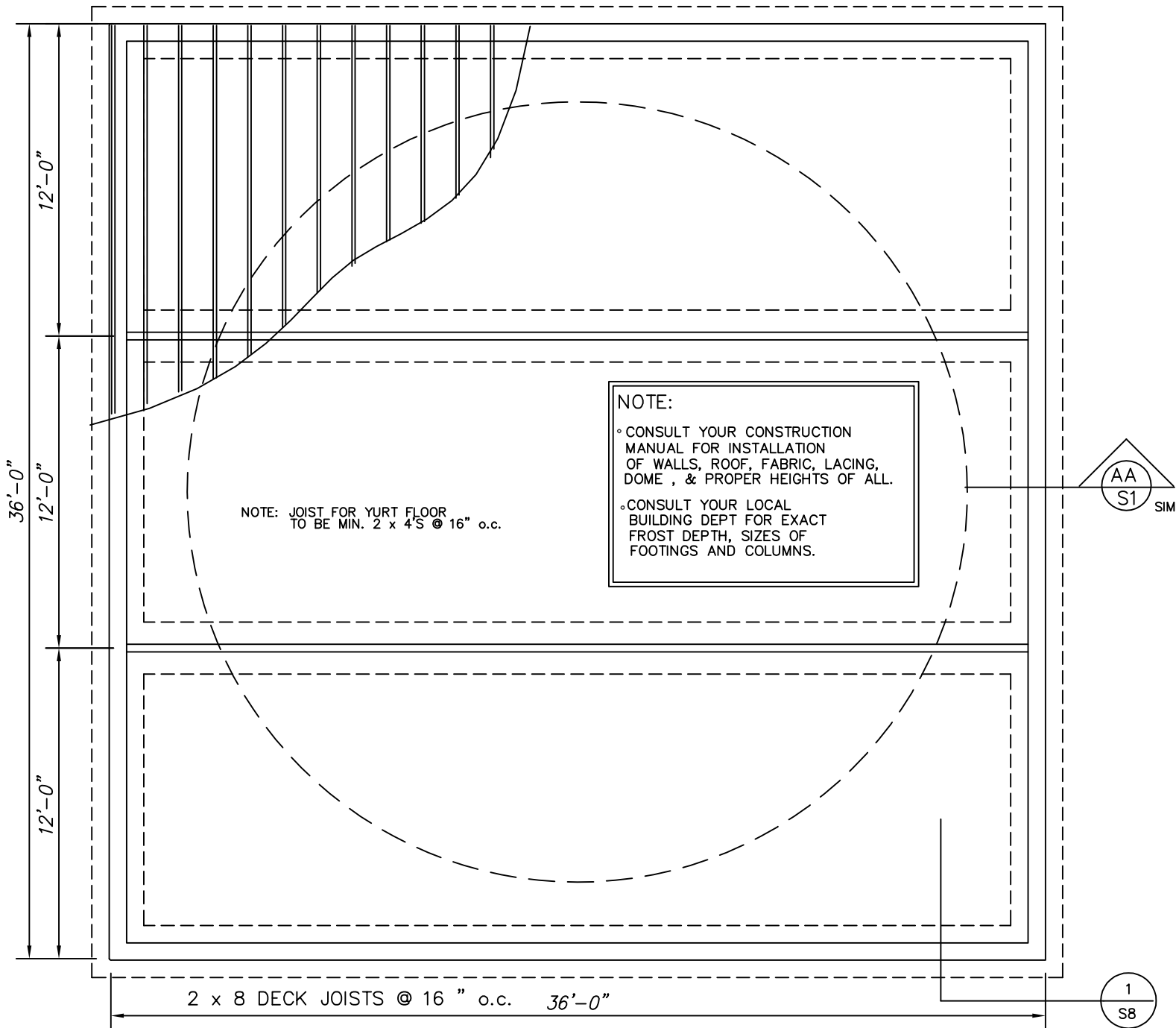


NOTE:  
CONSULT YOUR CONSTRUCTION MANUAL FOR  
INSTALLATION OF WALLS, ROOF, FABRIC,  
LACING, DOME , & PROPER HEIGHTS OF ALL.

Note: The bender board is used to surround and retain the lattice of the yurt. It should attach to the perimeter of the raised ("footprint") portion of the deck so that it clears the surface of the interior finish floor by 2 - 3" (do not exceed 3"). Leave a 48" gap in your bender board for each door in your yurt. (56" gap for French doors).For placement of non-symetrical door call manufacturer.

The bender board can be attached outside of the finished size of the footprint. (e.g. a 20' yurt footprint equals 20' diameter plus the thickness of the bender board.

Choose an appropriate material for your bender board. 1 X Trex fascia bd or better  
Alternative: Use pressure treated plywood, redwood or equal.

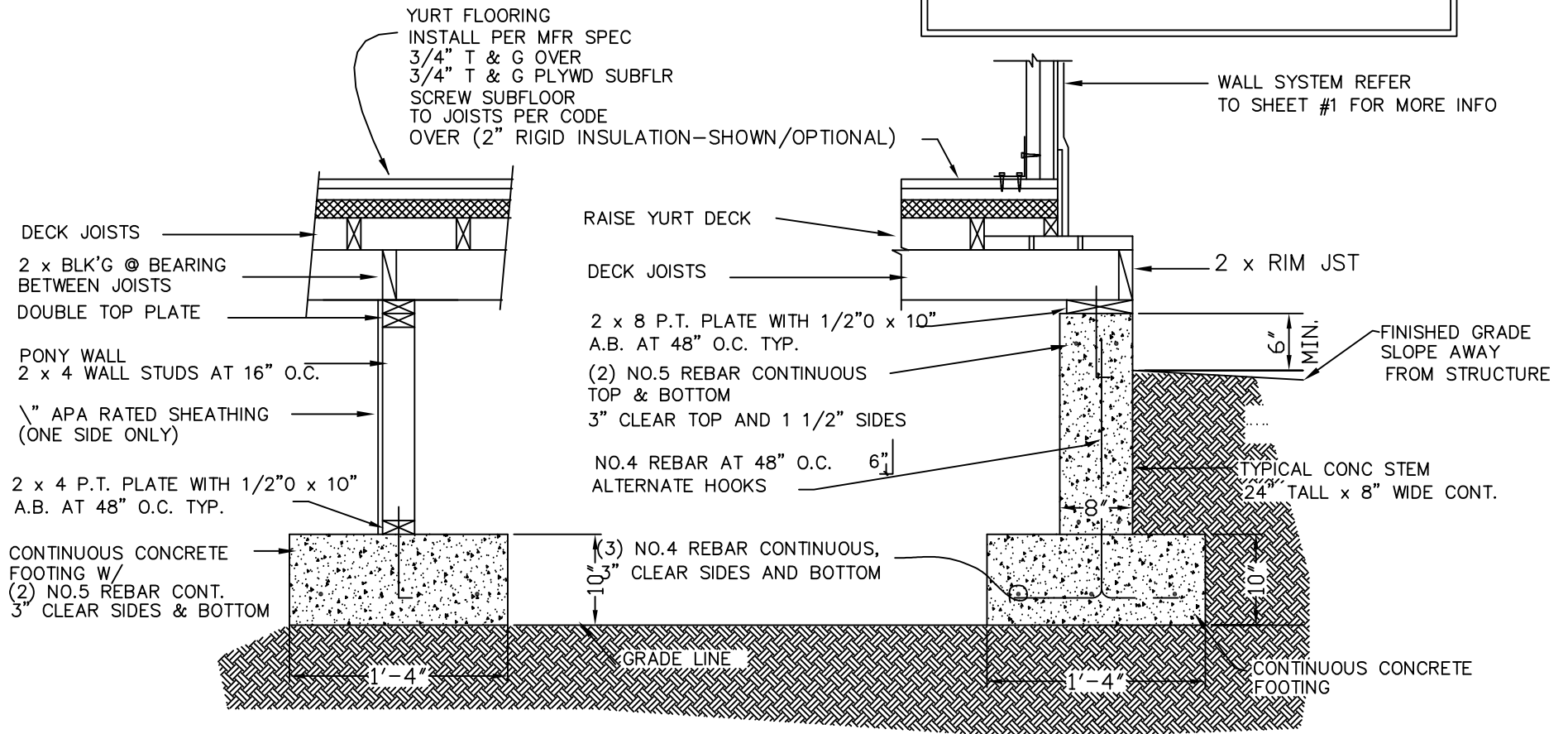


30' YURT ALTERNATE FOUNDATION

SHEET #7

# NOTE:

- ° CONSULT YOUR CONSTRUCTION MANUAL FOR INSTALLATION OF WALLS, ROOF, FABRIC, LACING, DOME , & PROPER HEIGHTS OF ALL.
- ° CONSULT YOUR LOCAL BUILDING DEPT FOR EXACT FROST DEPTH, SIZES OF FOOTINGS AND COLUMNS.



1

A L T . F O U N D A T I O N D E T A I L

ALTERNATE FOUNDATION DETAIL

SHEET #8