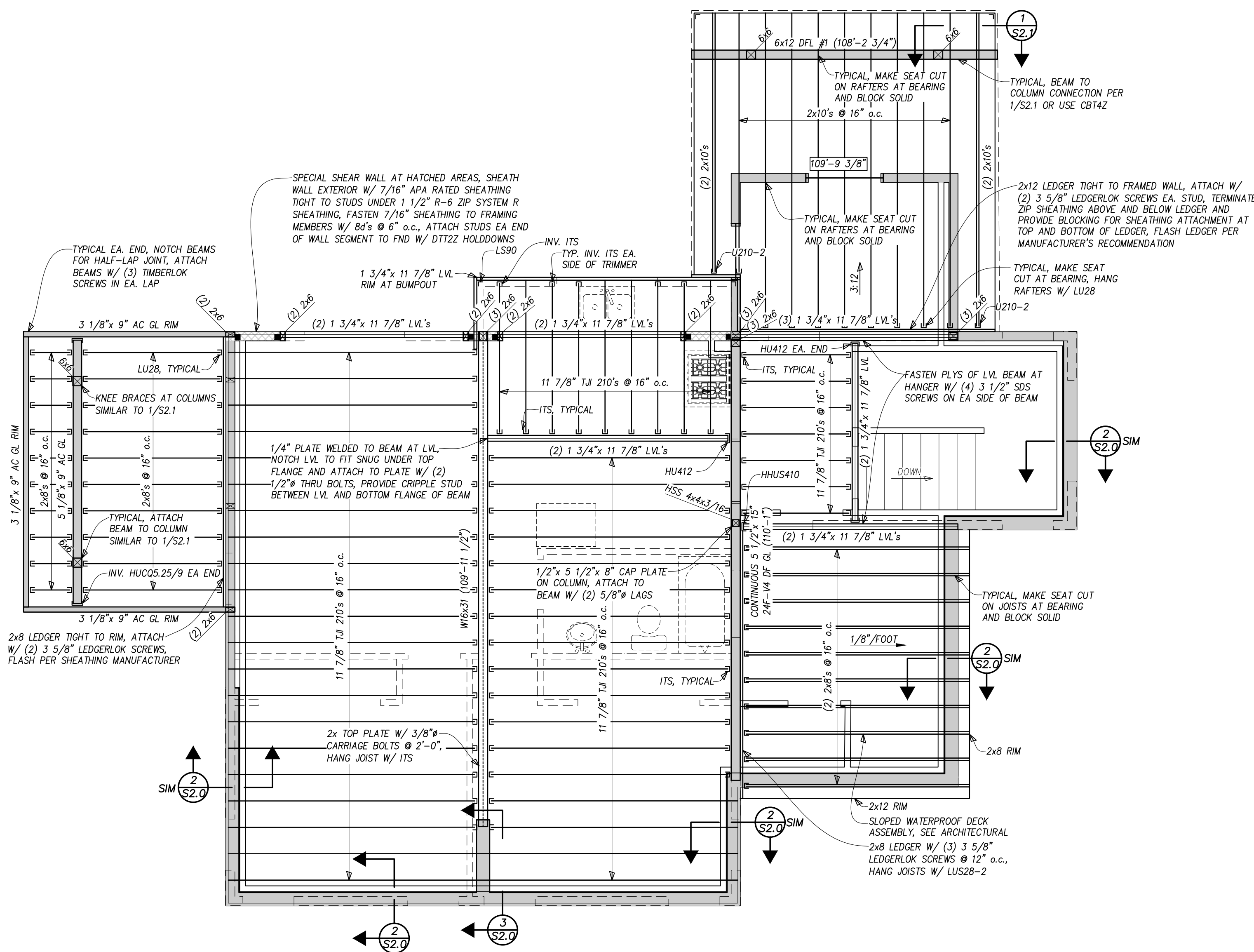


© Copyright 2015 SAA, P.C.



UPPER FLOOR AND LOWER ROOF FRAMING PLAN

Scale : 1/4" = 1'-0"

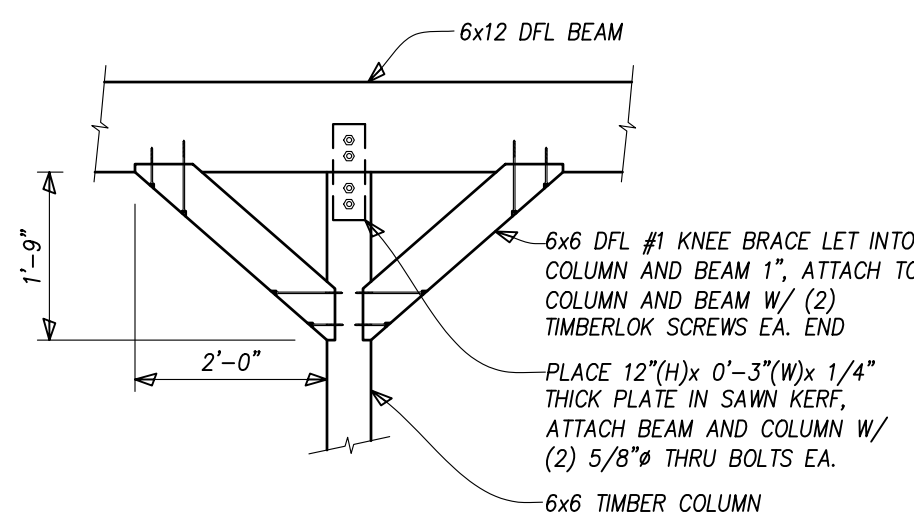
TYPICAL AT FLOOR, 3/4" APA RATED, EXPOSURE 1, SHEATHING TOP OF SHEATHING ELEVATION SHALL BE 110'-1 3/4" OR AS NOTED ON PLANS

FRAME EXTERIOR WALLS ARE TO BE 2x6 @ 16" o.c. W/ R-6 ZIP SYSTEM R SHEATHING UNLESS NOTED OTHERWISE

TYPICAL HEADER THIS PLAN, (3) 2x10's W/ (1) 2x6 TRIMMER AND (1) 2x6 KING STUD EACH END UNLESS NOTED OTHERWISE

(XX'-XX") INDICATES ELEVATION TOP OF STEEL OR TIMBER BEAM

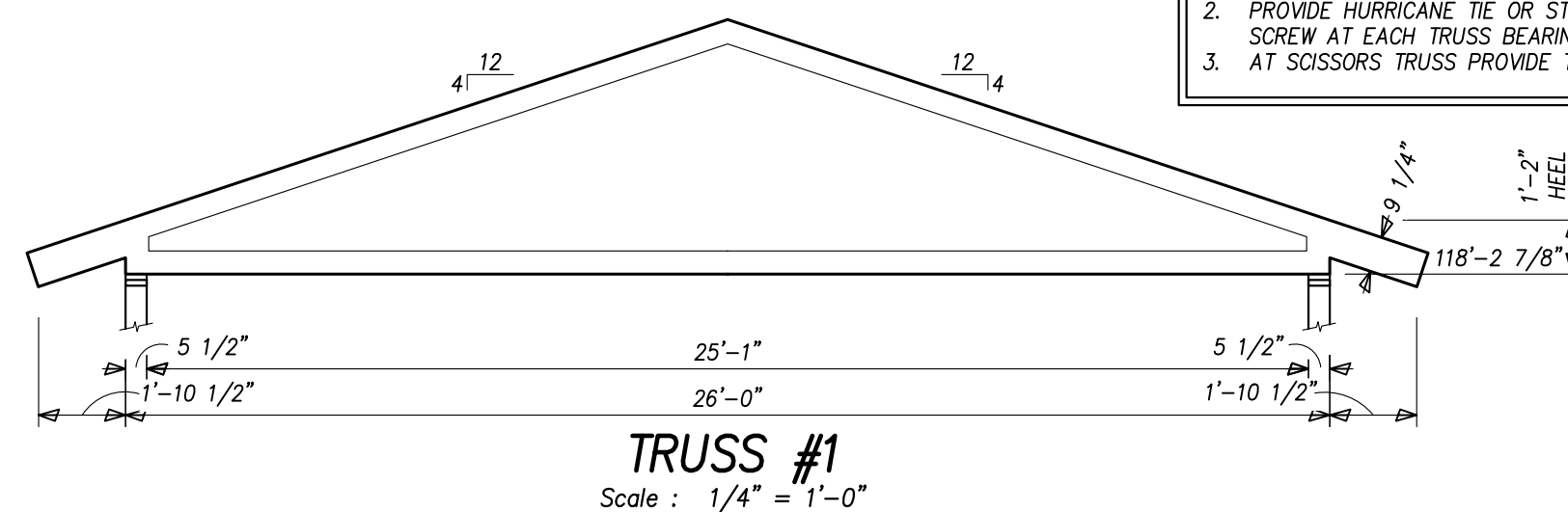
INDICATES SIZE OF COLUMN BELOW BEAM AT INDICATED LOCATION



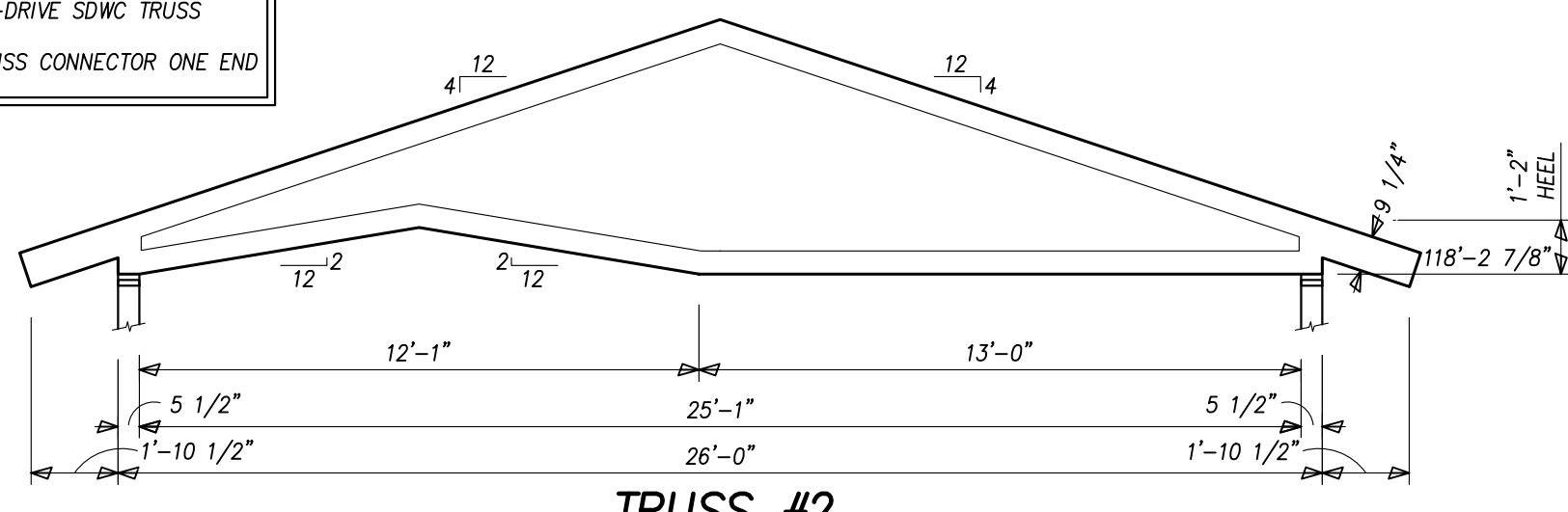
NOTE: ALL CONNECTIONS TO BE CONCEALED, RECESS AND PLUG AS REQ'D

DETAIL 1/2" = 1'-0"

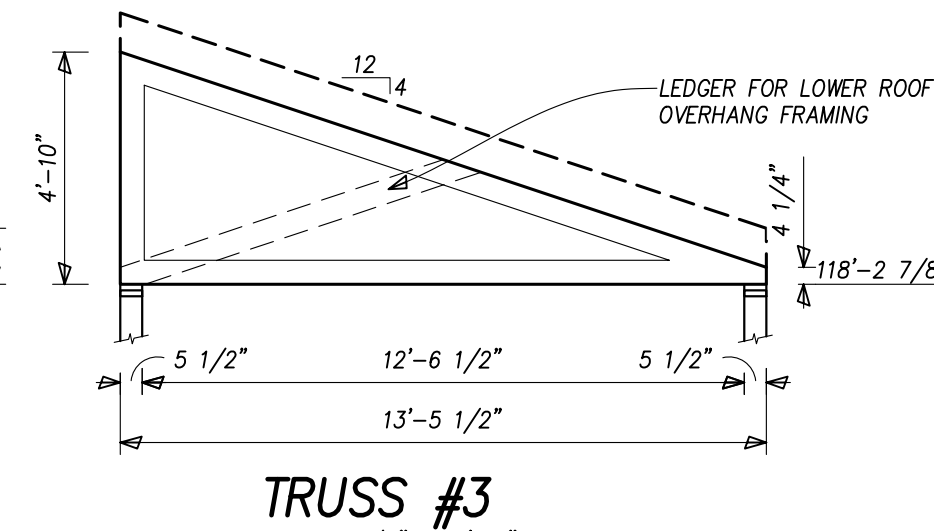
- NOTE:
1. TYPICAL, PROVIDE 2x STUD WITHIN 4" OF TRUSS BEARING
 2. PROVIDE HURRICANE TIE OR STRONG-DRIVE SDWC TRUSS SCREW AT EACH TRUSS BEARING
 3. AT SCISSORS TRUSS PROVIDE TO TRUSS CONNECTOR ONE END



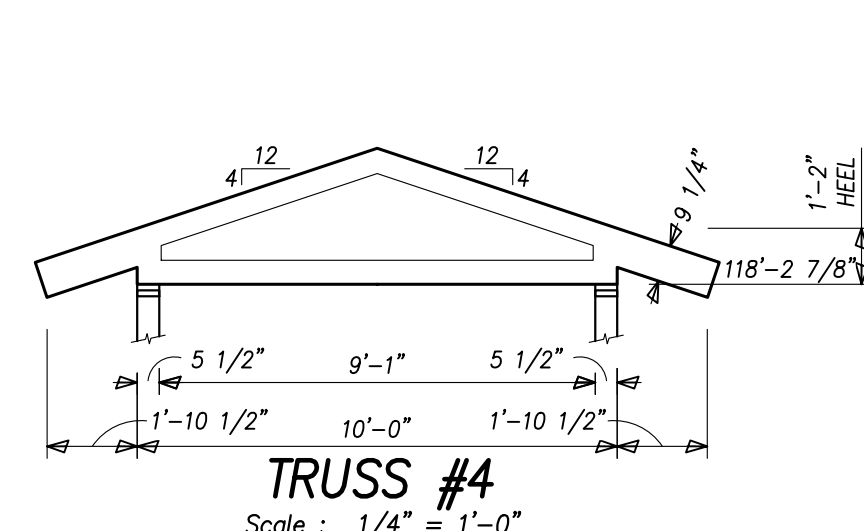
TRUSS #1
Scale : 1/4" = 1'-0"



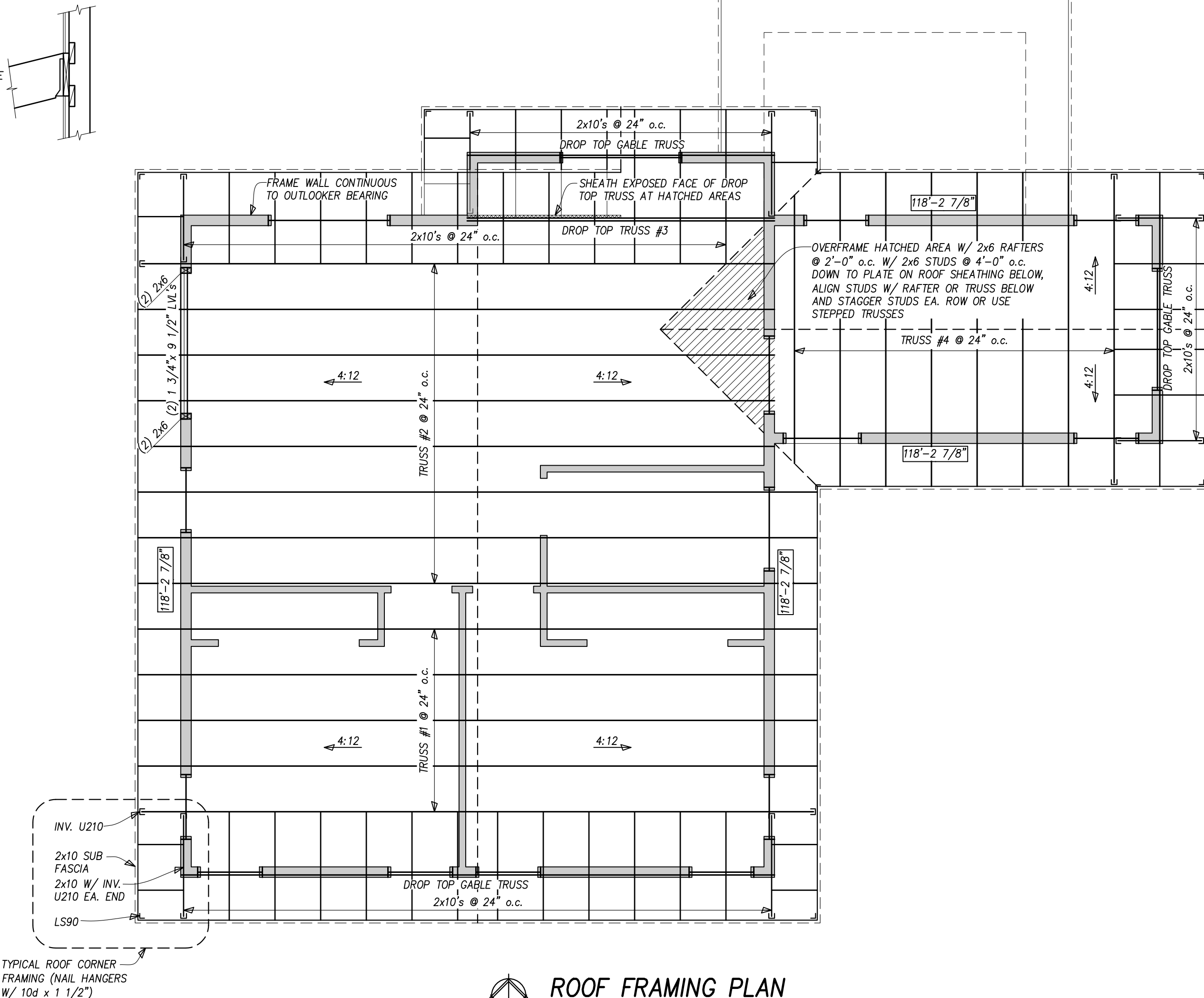
TRUSS #2
Scale : 1/4" = 1'-0"



TRUSS #3
Scale : 1/4" = 1'-0"



TRUSS #4
Scale : 1/4" = 1'-0"



ROOF FRAMING PLAN

Scale : 1/4" = 1'-0"

FRAME EXTERIOR WALLS ARE TO BE 2x6 @ 16" o.c. W/ R-6 ZIP SYSTEM R SHEATHING UNLESS NOTED OTHERWISE

TYPICAL HEADER THIS PLAN, (3) 2x10's W/ (1) 2x6 TRIMMER AND (1) 2x6 KING STUD EACH END UNLESS NOTED OTHERWISE

TYPICAL AT ROOF, 5/8" APA RATED, EXPOSURE 1, SHEATHING TYPICAL SUB-FASCIA THIS PLAN, IS TO BE 2x10

TOP OF PLATE ELEVATION ON FRAME BEARING WALL SHALL BE INDICATED BY (XX'-XX")

(XX'-XX") INDICATES ELEVATION TOP OF STEEL OR TIMBER BEAM

INDICATES SIZE OF COLUMN BELOW BEAM AT INDICATED LOCATION

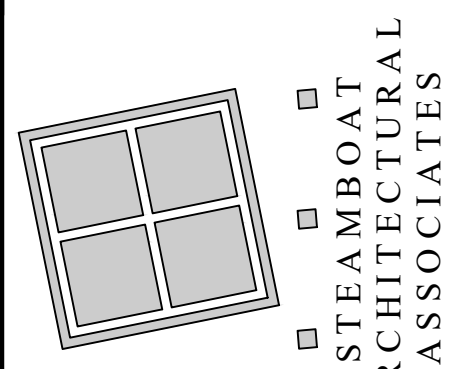
THESE DRAWINGS
DO NOT INCLUDE
THE COMPONENTS
NECESSARY FOR
CONSTRUCTION
SAFETY.

ALPENGLOW
ENGINEERING SOLUTIONS, INC.
Consulting Structural Engineers
Pine Row Rd, Suite 202, P.O. Box 773901
Steamboat Springs, CO 80477
970.879.1181 alpenglowsolutions.com

DRAWN BY: ATB
PROJECT#: 21-0047
FRAMING PLAN



William J. Rangitsch
970.879.0819
p.o. box 772910 345 Lincoln ave ste. 200
steamboat springs, co. 80477



A Cabin for
David & Jane Blandford
Lot B8, Marabou
Routt County, Colorado

30 AUG 21

S2.1

21-06