

**REVIEWED  
FOR  
CODE  
COMPLIANCE**  
10/07/2022

**Proposed Locations of Vista Verde Solar Equipment**



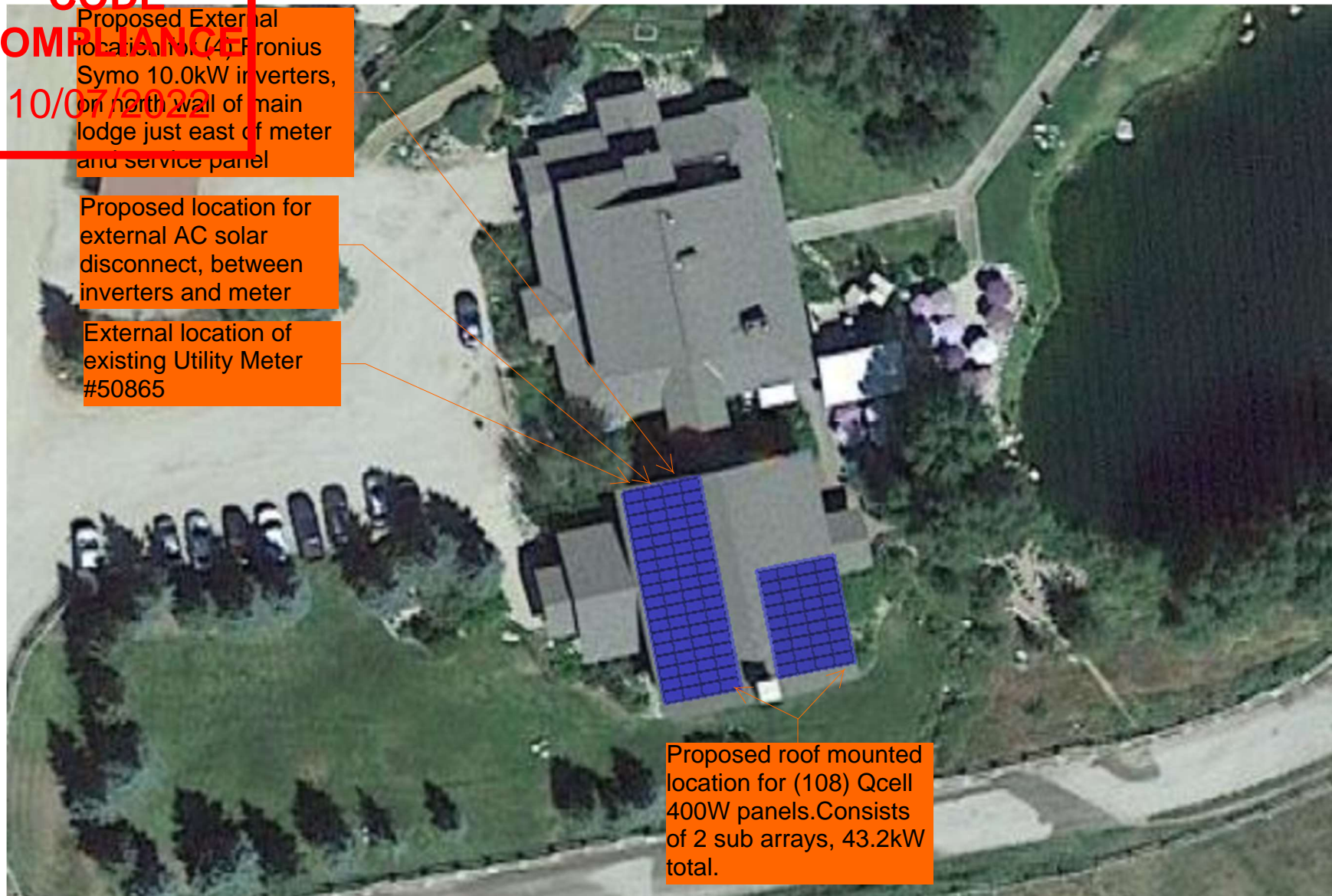
Proposed location for  
95.2kW Roof mounted  
Arena Array

Proposed location for  
43.2kW Roof Mounted  
Main Lodge Array.

**Vista Verde Ranch**  
58000 Cowboy Way, Clark, CO, 80428

**REVIEWED  
FOR  
CODE  
COMPLIANCE  
10/07/2022**

## Main Lodge Array Proposed Equipment Locations





External location of existing Utility Meter #94080. On existing pedestal in between horse corrals.

### Arena Array Proposed Equipment Locations

External location of existing Utility Meter #94080. On existing pedestal in between horse corrals.

Proposed location for external AC solar disconnect, on NW corner of shop, Near existing electric service panel.

Proposed Internal location  
for (6) Fronius Primo  
10.0kW inverters, on  
central wall in shop  
building.(Receiving  
68.8kW DC power)

Proposed roof mounted location for (238) Qcell 400W panels. Consists of 2 equal sub arrays, 95.2 kW total.

Note: Output of array will be split between 2 utility meters, creating 2 different electrical systems.

Separate electrical systems denoted by green and blue call outs.

Permanent Placard to be placed on meter cabinet denoting location of AC solar disconnect, within sight of meter.

Proposed External location for (2) Fronius Symo 12.0kW inverters, on western wall of arena, near utility meter and service panel. (Receiving 26.4 kW DC

Proposed location for external AC solar disconnect, between inverters and meter

External location of  
existing Utility Meter  
#50818