



Twentymile Coal, LLC
Foidel Creek Mine
29515 RCR 27
Oak Creek, CO 80467
970.879.3800

April 4, 2024

Hunter Ridley
Division of Reclamation, Mining, and Safety
1313 Sherman Street, Room 215
Denver, Colorado 80203
(303) 868-7757

RE: Twentymile Coal, LLC - Foidel Creek Mine (Permit No. C-82-056), Minor Revision (MR24-325) WC Mains and 6East Utility Borehole Pad Sites

Dear Ms. Ridley:

Twentymile Coal, LLC (TC) requests CDRMS approval of a Minor Revision to our existing approved Permit for construction, operation, and reclamation of two Borehole Pad locations connecting into the Wolf Creek seam.

The first borehole pad site is the WC Mains Utility Borehole site and will be used to pump cement material into the 10 East Entries to form structural cribs for addition roof and pillar support. This borehole is centrally located and may also be used for the same application in 11 East and 12 East entries. Majority of the time the site will be a basic gravel pad with a borehole. During cement material pumping the site will house an array of equipment provided by the contractor including water and cement material holding tanks, diesel powered pump and mixing unit, and if weather is poor, a temporary tent may be set up to cover and heat the equipment. Between pumping projects, the site will be dismantled and all equipment and structures will be removed. To supply water to the site a 2" HDPE pipe will be run on the surface during the active pumping projects from the 6MN Million gallon tank. The water line will be walked daily to inspect for leaks. Access to the site will be from the Camilletti Road on the west side of the mine followed by a network of two-track roads. The existing roads will require minor improvements and surfacing to allow access by all equipment. A short new 200-foot access road will be required to access the pad from the existing road. The borehole will be drilled approximately 1,600 feet into the mine workings and cased.

The second location is the 6 East Utility borehole site that will only be constructed if it is necessary. The site is being permitted in the event that the 6 East panel needs additional ventilation for adequate air quality underground. If the site is constructed it will be accessed using an existing two track that is used to access the Railroad tracks from the east side of the mine. Approximately 900 feet of new road will be added beyond the railroad tracks to access the new pad location. A railroad crossing will also be installed by Union Pacific. The existing two-track will require minor improvements and surfacing to make it passable by all equipment. The borehole will be drilled 1,200 feet into the GOB or the mine workings in the back of the 6East panel and cased. A mobile propane powered ventilation exhaust unit will be placed on the pad site along with a propane tank to help draw air out of the mine.

An SAE is requested for both locations. The sites are both proposed to be 200 feet by 200 feet. Topsoil will be piled adjacent to the pad sites in an acceptable manner and seeded. Diversion ditches will be installed to divert any run-on water from any upgradient watersheds. Sites will also be fenced to keep livestock off the locations.

Borehole completions will involve drilling, installing, and grouting steel surface casing in place to a maximum depth of approximately 60 feet (dependent on the ground conditions encountered). The boreholes will be drilled into the mine workings. The boreholes will be 12 inches in diameter and grouted to house an 8 5/8 diameter casing. Water, drilling fluids, and cuttings will be contained within one or more excavated pits located on the pad site.

Detailed design, operations, and reclamation information for the proposed activities is provided as both revised PAP text and exhibits; and revised maps, reflecting the location and configuration of the new facilities and roads.

We would like to proceed with this project ASAP to avoid any operation delays and harsh winter conditions. We, therefore, appreciate your consideration, cooperation, and assistance in facilitating timely review and approval of this Minor Revision application. After you have opportunity to review the accompanying information, please feel free to contact me with any questions or to discuss submittal materials or related matters.

Sincerely,

Miranda Kawcak

Miranda Kawcak
Environmental Manager
mkawcak@peabodyenergy.com
970-870-2718

cc: Nick Aromando

Pad Report

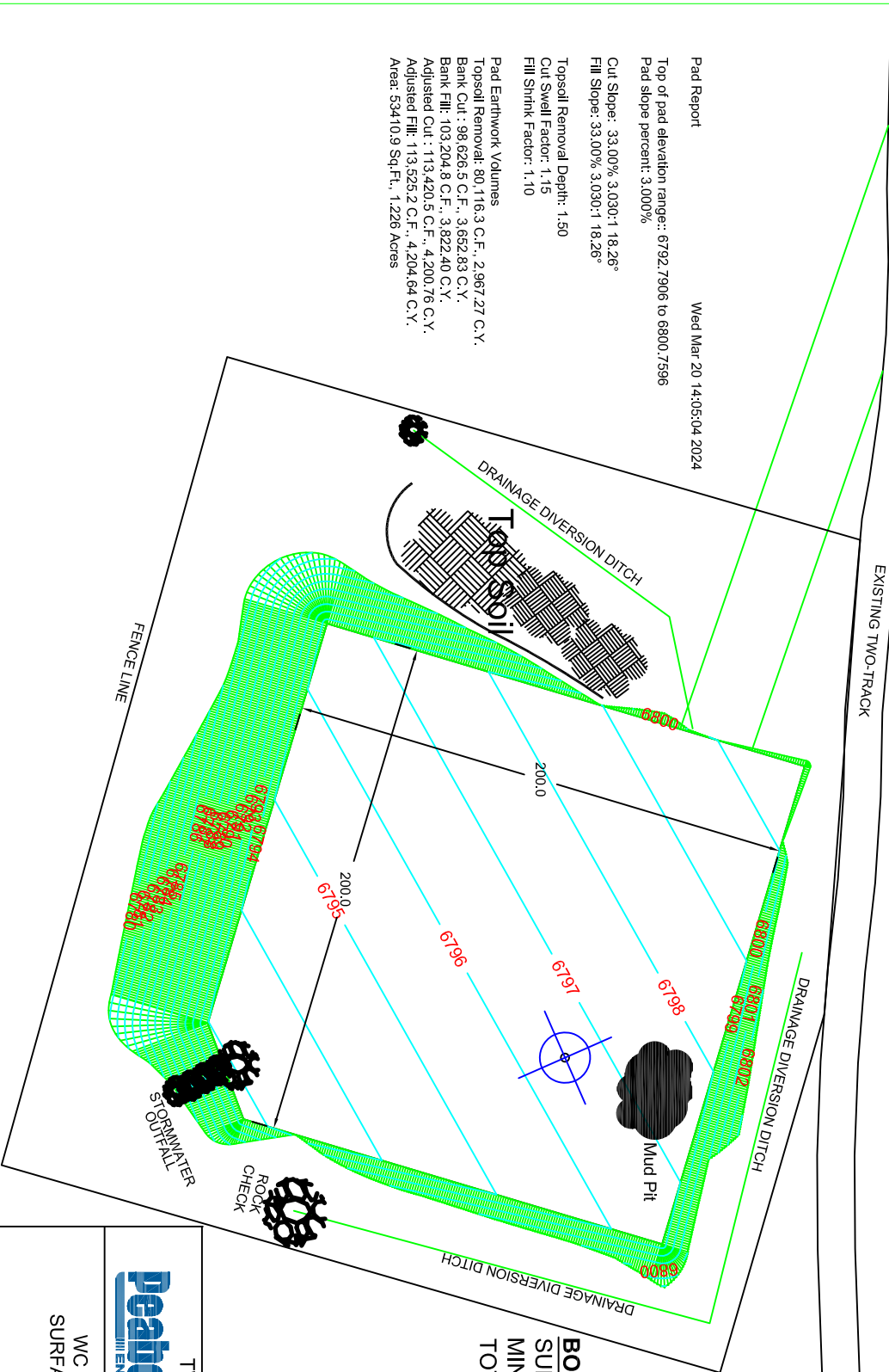
Wed Mar 20 14:05:04 2024

Top of pad elevation range:: 6792.7906 to 6800.7596
Pad slope percent: 3.0000%

Cut Slope: 33.00% 3.030:1 18.26°
Fill Slope: 33.00% 3.030:1 18.26°

Topsoil Removal Depth: 1.50
Cut Swell Factor: 1.15
Fill Shrink Factor: 1.10

Pad Earthwork Volumes
Topsoil Removal: 80,116.3 C.F., 2,967.27 C.Y.
Bank Cut : 98,626.5 C.F., 3,662.83 C.Y.
Bank Fill: 103,204.8 C.F., 3,822.40 C.Y.
Adjusted Cut : 113,420.5 C.F., 4,200.76 C.Y.
Adjusted Fill: 113,525.2 C.F., 4,204.64 C.Y.
Area: 53410.9 Sq.Ft., 1,226 Acres



BOREHOLE INFORMATION
 SURFACE ELEVATION = 6805'
 MINE ELEVATION = 5,190'
 TOTAL DEPTH = 1,615'

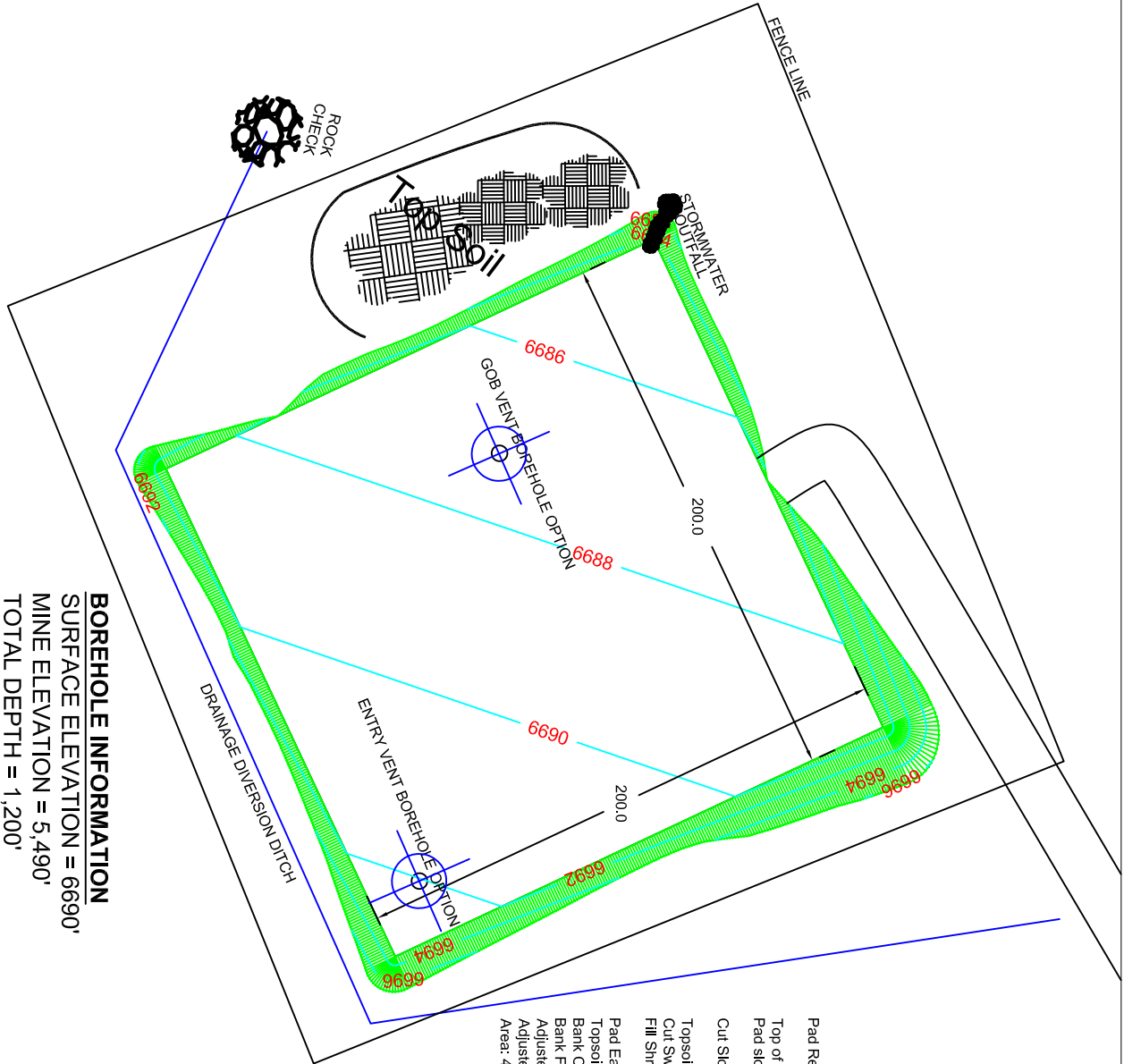
Peabody
 ILLINOIS ENERGY

TWENTYMILE COAL, LLC
 29515 RCR #27
 OAK CREEK, CO 80467

WC MAINS UTILITY BOREHOLE
 SURFACE PAD AND ACCESS ROAD
 EXHIBIT 49FF

DESIGNED BY: M.KAWCAK	COUNTRY: USA
DRAWN BY: M.KAWCAK	STATE/PROVINCE: COLORADO
APPROVED BY:	SECTION 17 TSM R88W
DATE: 2024-03-20	DRAWING/SHEET: 1 of 1
SCALE: 1" = 50'	C.I.: 0'

T:\Environment\BREVISON\MINE\RCR\WV\RD4-325 SE Bleaser site, Maines Pumpsite cibs Peabody Mains Pad Location.dwg



BOREHOLE INFORMATION
 SURFACE ELEVATION = 6690'
 MINE ELEVATION = 5,490'
 TOTAL DEPTH = 1,200'

Pad Report
 Thu Mar 21 09:16:51 2024
 Top of pad elevation range: 6684.4270 to 6692.9112
 Pad slope percent: 3.000%
 Cut Slope: 33.00%: 3.030: 1 18.26°
 Topsoil Removal Depth: 1.00
 Cut Swell Factor: 1.15
 Fill Shrink Factor: 1.10
 Pad Earthwork Volumes
 Topsoil Removal: 47,733.9 C.F., 1,767.92 C.Y.
 Bank Cut : 29,081.3 C.F., 1,077.09 C.Y.
 Bank Fill: 30,380.0 C.F., 1,125.19 C.Y.
 Adjusted Cut : 33,443.6 C.F., 1,238.65 C.Y.
 Adjusted Fill: 33,418.0 C.F., 1,237.71 C.Y.
 Area: 47733.9 Sq.Ft., 1.096 Acres

TWENTYMILE COAL, LLC
 29515 RCR #27
 OAK CREEK, CO 80467

peabody
 ENERGY

2024-03-20
 1" = 50'

DESIGNED BY: MKAWCAK
 DRAWN BY: MKAWCAK
 APPROVED BY:

COUNTRY: USA
 STATE/PROVINCE: COLORADO
 GCS: SECTION 17 T5N R86W

DATE: 2024-03-20
 SCALE: 1" = 50'

DRAMINGSHEET: 1 of 1
 C11: 0'

0 200 400 600 FEET

6EAST UTILITY BOREHOLE
 SURFACE PAD AND ACCESS ROAD
 EXHIBIT 49FF

1:\Environment\REVISION\NOR-R\MR24-225 BE Bheider.sld, Mine Pumpable Crb Padge BLEEDER PAD LOCATION.dwg