



April 25, 2024

Miranda Kawcak
Twentymile Coal, LLC
29515 Routt County Road No. 27
Oak Creek, CO 80467

Re: Foidel Creek Mine (Permit No. C-1982-056)
Minor Revision No. 325 (MR- 325)
MR325-6East & WC Mains Utility Borehole Locations

Dear Ms. Kawcak:

Enclosed you will find the Division of Reclamation, Mining and Safety's Decision Form for Minor Revision No. 325 at the Foidel Creek Mine.

Documentation must be submitted to the Division demonstrating that a copy of the approved revision application was sent to the Office of Surface Mining and the Bureau of Land Management. The material should be sent within 15 days of final approval.

Please refer to the Performance Bond heading on the enclosed decision form. If the amount of Bond Held equals or exceeds the Revised Liability, you need not submit additional bond. However, if the Revised Liability exceeds the Bond Held, please submit additional bond or rider to your existing bond that equals or exceeds the Revised Liability. This Minor Revision must not be implemented until any required increase in bond is submitted to and approved by the Division.

If there are stipulations attached, please sign and return the decision form to the Division.

If you have any questions, please contact me.



Sincerely,

A handwritten signature in blue ink that reads "Hunter Ridley". The signature is written in a cursive, flowing style.

Hunter C. Ridley
Environmental Protection Specialist
Hunter.ridley@state.co.us

Enclosure

cc: Elizabeth Shaeffer, Office of Surface Mining, with enclosures
C-MR-06



COAL MINING PERMIT - MINOR REVISION DECISION

Foidel Creek Mine, Twentymile Coal, LLC

Permit No. C-1982-056

The Division of Reclamation, Mining and Safety has issued the decision stated below. Any person who has an interest which is or may be adversely affected may request a formal hearing in accordance with Rule 2.08.4(6)(c)(iii).

Minor Revision No. 325

Decision: Approve

Submittal Date: April 4, 2024

Decision Date: April 25, 2024

Description of Revision: MR325-6East & WC Mains Utility Borehole Locations

DIVISION OF RECLAMATION,
MINING AND SAFETY

PERMITTEE

Authorized Representative - Division
Date: April 25, 2024

Authorized Representative - Permittee (if applicable)
Date:

CHANGE IN ACREAGE		REVISED TOTAL ACREAGE		PERFORMANCE BOND	
Disturbed:	5.50	Disturbed:	832.65	Prior Liability:	\$12,780,494.45
Affected:	5.50	Affected:	20,001.83	Change in Liability:	\$42,596.00
Permit:	0.00	Permit:	22,647.00	Revised Liability:	\$12,823,090.45
State:	0.00	State:	7,613.00	Bond Held:	\$13,260,344.00
Federal:	0.00	Federal:	6,070.00		
Private:	0.00	Private:	8,964.00		
County:	0.00	County:	0.00		
Municipal:	0.00	Municipal:	0.00		

REVISED APPLICATION PAGES

REVISED MAPS

Table of Contents: Page iv
Volume II - E page xii

2.04-9.3 Through
2.04-9.4

2.05-11.2

2.05-45.34 Through 45.35

2.05-74.2

2.05-84.11 through 2.05-84.11a

2.05-84.15

2.05-106.3 Through 106.4

Table 49A

Exhibit 49FF (add design info for 6E pad and WC
Mains Pad)

DELETED APPLICATION PAGES

None

Revised Map 23C, Sheets 3 & 4

Revised Map 24, Sheets 2 & 4

Revised Map 29, Sheets 2 & 4

DELETED MAPS

None



Twentymile Coal, LLC
Foidel Creek Mine
29515 RCR 27
Oak Creek, CO 80467
970.879.3800

April 4, 2024

Hunter Ridley
Division of Reclamation, Mining, and Safety
1313 Sherman Street, Room 215
Denver, Colorado 80203
(303) 868-7757

RE: Twentymile Coal, LLC - Foidel Creek Mine (Permit No. C-82-056), Minor Revision (MR24-325) WC Mains and 6East Utility Borehole Pad Sites

Dear Ms. Ridley:

Twentymile Coal, LLC (TC) requests CDRMS approval of a Minor Revision to our existing approved Permit for construction, operation, and reclamation of two Borehole Pad locations connecting into the Wolf Creek seam.

The first borehole pad site is the WC Mains Utility Borehole site and will be used to pump cement material into the 10 East Entries to form structural cribs for addition roof and pillar support. This borehole is centrally located and may also be used for the same application in 11 East and 12 East entries. Majority of the time the site will be a basic gravel pad with a borehole. During cement material pumping the site will house an array of equipment provided by the contractor including water and cement material holding tanks, diesel powered pump and mixing unit, and if weather is poor, a temporary tent may be set up to cover and heat the equipment. Between pumping projects, the site will be dismantled and all equipment and structures will be removed. To supply water to the site a 2" HDPE pipe will be run on the surface during the active pumping projects from the 6MN Million gallon tank. The water line will be walked daily to inspect for leaks. Access to the site will be from the Camilletti Road on the west side of the mine followed by a network of two-track roads. The existing roads will require minor improvements and surfacing to allow access by all equipment. A short new 200-foot access road will be required to access the pad from the existing road. The borehole will be drilled approximately 1,600 feet into the mine workings and cased.

The second location is the 6 East Utility borehole site that will only be constructed if it is necessary. The site is being permitted in the event that the 6 East panel needs additional ventilation for adequate air quality underground. If the site is constructed it will be accessed using an existing two track that is used to access the Railroad tracks from the east side of the mine. Approximately 900 feet of new road will be added beyond the railroad tracks to access the new pad location. A railroad crossing will also be installed by Union Pacific. The existing two-track will require minor improvements and surfacing to make it passable by all equipment. The borehole will be drilled 1,200 feet into the GOB or the mine workings in the back of the 6East panel and cased. A mobile propane powered ventilation exhaust unit will be placed on the pad site along with a propane tank to help draw air out of the mine.

An SAE is requested for both locations. The sites are both proposed to be 200 feet by 200 feet. Topsoil will be piled adjacent to the pad sites in an acceptable manor and seeded. Diversion ditches will be installed to divert any run-on water from any upgradient watersheds. Sites will also be fenced to keep livestock off the locations.

Borehole completions will involve drilling, installing, and grouting steel surface casing in place to a maximum depth of approximately 60 feet (dependent on the ground conditions encountered). The boreholes will be drilled into the mine workings. The boreholes will be 12 inches in diameter and grouted to house an 8 5/8 diameter casing. Water, drilling fluids, and cuttings will be contained within one or more excavated pits located on the pad site.

Detailed design, operations, and reclamation information for the proposed activities is provided as both revised PAP text and exhibits; and revised maps, reflecting the location and configuration of the new facilities and roads.

We would like to proceed with this project ASAP to avoid any operation delays and harsh winter conditions. We, therefore, appreciate your consideration, cooperation, and assistance in facilitating timely review and approval of this Minor Revision application. After you have opportunity to review the accompanying information, please feel free to contact me with any questions or to discuss submittal materials or related matters.

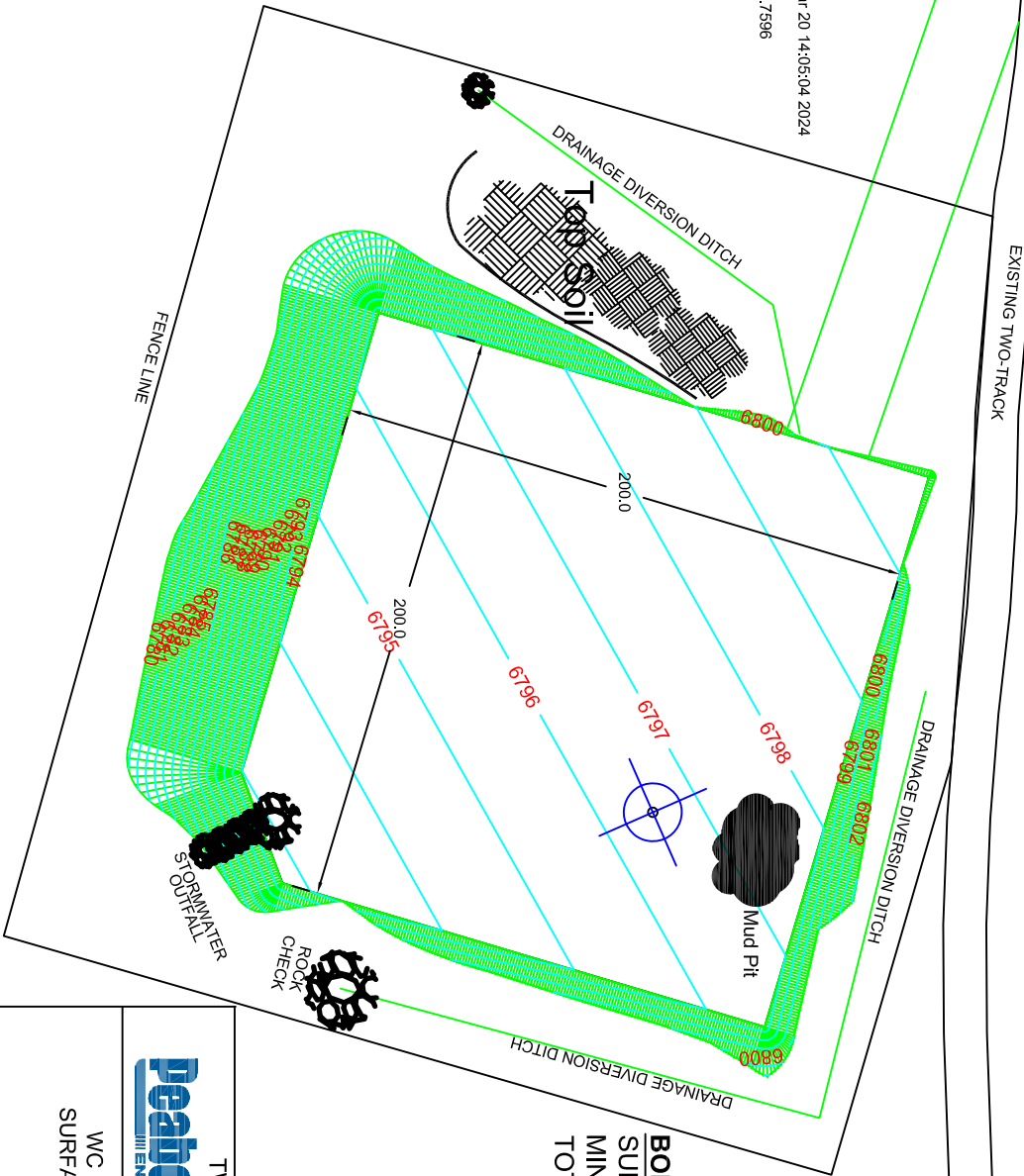
Sincerely,

Miranda Kawcak

Miranda Kawcak
Environmental Manager
mkawcak@peabodyenergy.com
970-870-2718

cc: Nick Aromando

Pad Report
Wed Mar 20 14:05:04 2024
Top of pad elevation range:: 6792.7906 to 6800.7596
Pad slope percent: 3.000%
Cut Slope: 33.00% 3.030:1 18.26°
Fill Slope: 33.00% 3.030:1 18.26°
Topsoil Removal Depth: 1.50
Cut Swell Factor: 1.15
Fill Shrink Factor: 1.10
Pad Earthwork Volumes
Topsoil Removal: 80,116.3 C.Y., 2,967.27 C.Y.
Bank Cut : 98,626.5 C.F., 3,652.83 C.Y.
Bank Fill: 103,204.8 C.F., 3,822.40 C.Y.
Adjusted Cut : 113,420.5 C.F., 4,200.76 C.Y.
Adjusted Fill: 113,525.2 C.F., 4,204.64 C.Y.
Area: 53410.9 Sq.Ft., 1.226 Acres



BOREHOLE INFORMATION
SURFACE ELEVATION = 6805'
MINE ELEVATION = 5,190'
TOTAL DEPTH = 1,615'

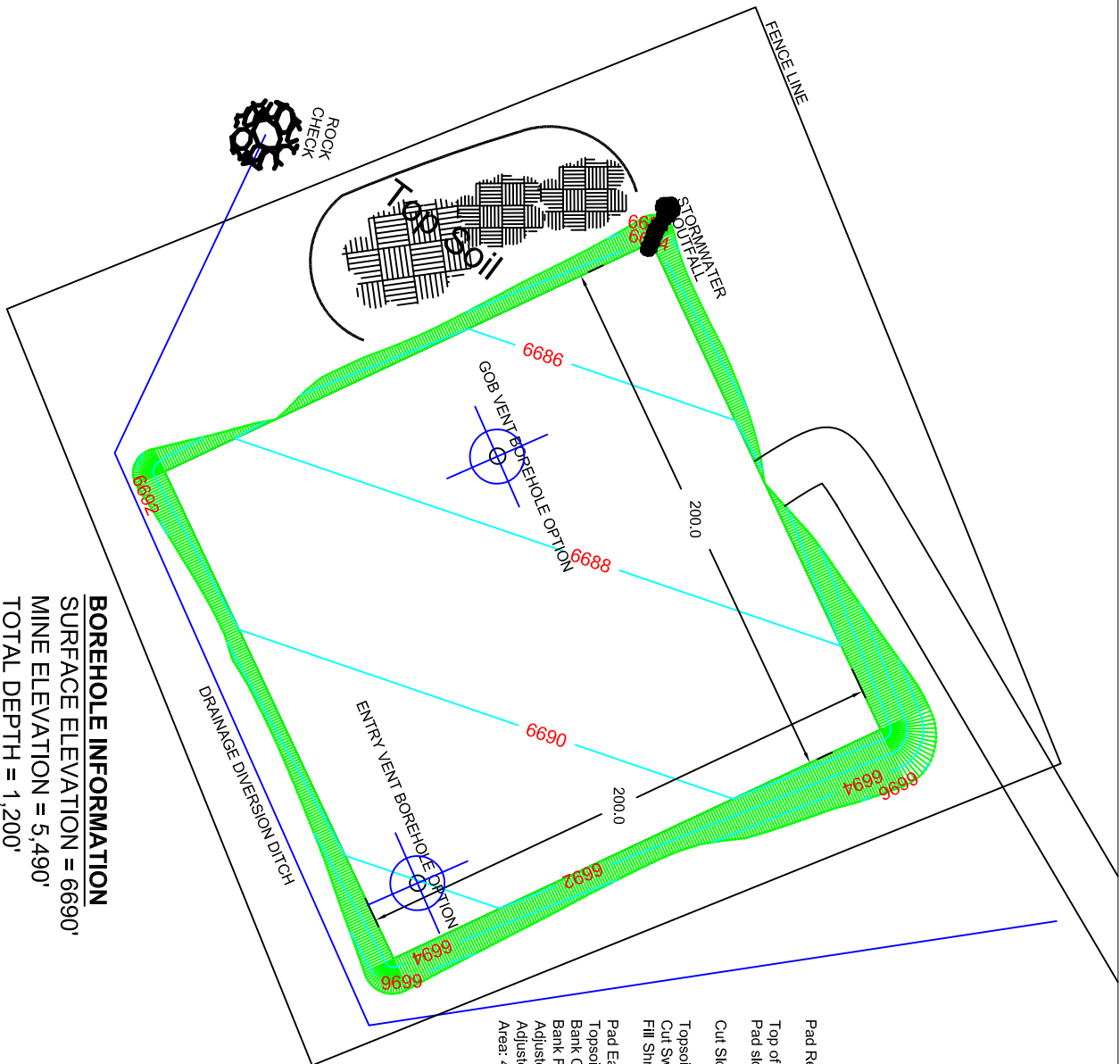
Peabody
III ENERGY
TWENTYMILE COAL, LLC
29515 RCR #27
OAK CREEK, CO 80467

WC MAINS UTILITY BOREHOLE
SURFACE PAD AND ACCESS ROAD
EXHIBIT 49FF

DESIGNED BY: MKAWCAK
DRAWN BY: MKAWCAK
APPROVED BY: MKAWCAK
COUNTRY: USA
STATE/PROVINCE: COLORADO
SECTION 17 TSN R68W

DATE: 2024-03-20
SCALE: 1" = 50'
DRAWING/SHEET: 1 of 1
C.I.: 0'





BOREHOLE INFORMATION
SURFACE ELEVATION = 6690'
MINE ELEVATION = 5,490'
TOTAL DEPTH = 1,200'

Pad Report
Thu Mar 21 09:16:51 2024
Top of pad elevation range:: 6684.4270 to 6692.9112
Pad slope percent: 3.000%
Cut Slope: 33.00% 3.030:1 18.26°
Topsoil Removal Depth: 1.00
Cut Swell Factor: 1.15
Fill Shrink Factor: 1.10
Pad Earthwork Volumes
Topsoil Removal: 47,733.9 C.Y., 1,767.92 C.Y.
Bank Cut : 29,081.3 C.F., 1,077.09 C.Y.
Bank Fill: 30,380.0 C.F., 1,125.19 C.Y.
Adjusted Cut : 33,443.6 C.F., 1,238.65 C.Y.
Adjusted Fill: 33,418.0 C.F., 1,237.71 C.Y.
Area: 47733.9 Sq.Ft., 1.096 Acres

TWENTYMILE COAL, LLC
29515 RCR #27
OAK CREEK, CO 80467

6EAST UTILITY BOREHOLE
SURFACE PAD AND ACCESS ROAD
EXHIBIT 49FF

DESIGNED BY: MKAWCZAK
DRAWN BY: MKAWCZAK
APPROVED BY:

COUNTRY: USA
STATE/PROVINCE: COLORADO
GCS: SECTION 17 T8N R86W

DATE: 2024.03.20
SCALE: 1" = 50'

DRAWING(S) SHEET: 1 of 1
C.I.:



L:\Environmental\PERMISSION\NOR-KAWCZAK\2024 EE Bleeder site, Mining Pumpable Crib Pad\6E EAST UTILITY BOREHOLE PAD LOCATION.dwg

**WC MAINS & 6 EAST UTILITY BOREHOLE PADS
(MR24-325)
RECLAMATION COST ESTIMATE**

Facilities Demolition and Removal

WC Mains Utility Borehole

Plugging and sealing 7E - (1600'x8" dia., 20 cy cement @ \$200/cy)	\$ 4,000
Plugging and sealing labor and equipment- (8 hrs @ \$250/hr) x 4	<u>\$ 8,000</u>
Subtotal	\$ 12,000

6E Utility Borehole

Plugging and sealing 7E - (1200'x8" dia., 15 cy cement @ \$200/cy)	\$ 3,000
Plugging and sealing labor and equipment- (8 hrs @ \$250/hr) x 4	<u>\$ 8,000</u>
Subtotal	\$ 11,000

Site Reclamation

WC Mains Utility Borehole Pad

Regrade pad and road access (~2.25 acres @ \$490/ac)	\$ 1,103
Soil replacement (pads and light-use road) – (~2.25 acres @ \$235/ac)	\$ 529
Revegetation – (2.25 acres @ \$490/acre)	<u>\$ 1,103</u>
Subtotal	\$ 2,725

6 East Utility Borehole Pad

Regrade pad and road access (~3.25 acres @ \$490/ac)	\$ 1,593
Soil replacement (pads and light-use road) – (~3.25 acres @ \$235/ac)	\$ 764
Revegetation – (3.25 acres @ \$490/acre)	<u>\$ 1,593</u>
Subtotal	\$ 3,950

Subtotal – All Direct Costs \$29,675

Indirect and Administrative Costs (@ 8%) \$ 2,374

Total Estimated Reclamation Cost \$32,049

Notes: Costs from Means Site Work and Landscape Cost Data and recent bond calculations