

TYPICAL LARGE SINGLE FAMILY LANDSCAPE

1:120

General Notes and Specifications:

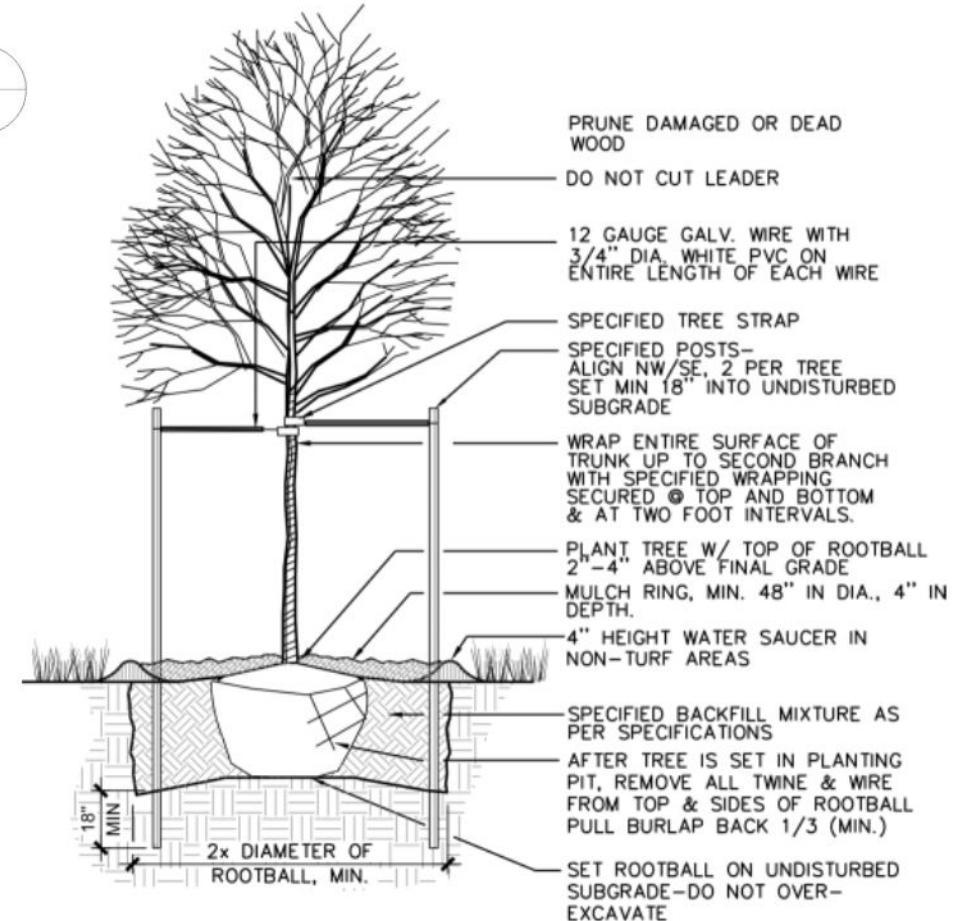
- All areas disturbed by construction and not designated a shrub bed or wildflower seed, shall be planted with the specified native grass seed.
- The contractor shall maintain positive drainage away from all walls and walkways. Fine grading shall be approved prior to planting.
- The Landscape Plan shall be reviewed on site prior to installation to ensure planting meets the intent of the design guidelines and county wildfire mitigation standards.
- Quantity and location of "natural" shrub plantings within Wildfire Mitigation Zone 2 shall be subject to field review by Wildfire Mitigation Officer.
- See Civil Engineering sheets for final grading and drainage.
- Snow Storage area shall be a min. of 25% of all driveway and parking areas.

Revegetation Notes:

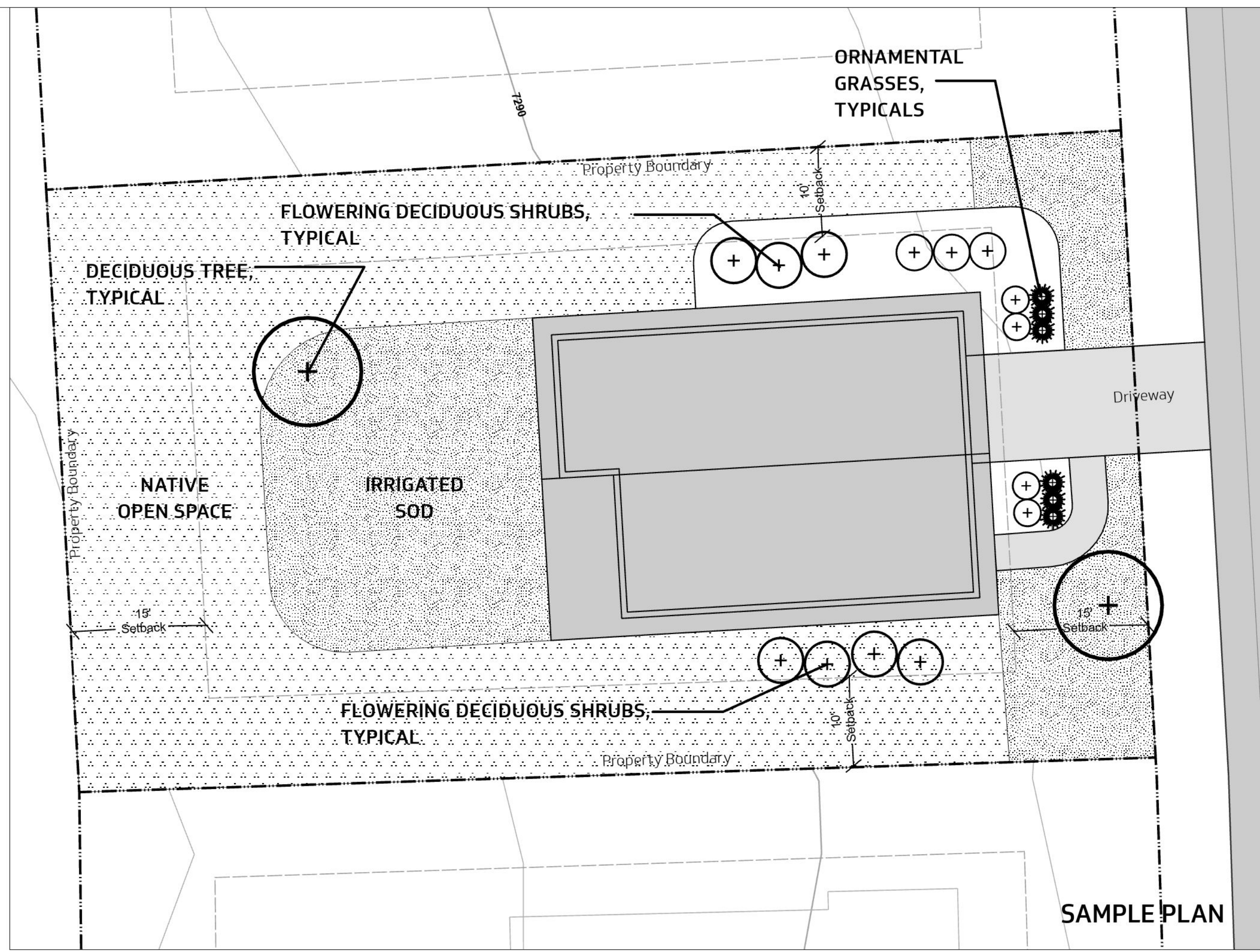
- Seed shall be broadcast and raked to 4" depth.
- Apply Biodegradable Green Dyed-Wood Cellulose-Fiber Mulch to all seeded Areas at a rate of 20 lbs. per 1,000 s.f.
- Prior to seeding, apply min. 6" topsoil, 10 lbs./1,000 s.f. Superphosphate and 40 lbs./1,000 s.f. Biosol Complete Fertilizer.

Fire Mitigation Notes:

- Zone 1 (0 - 30' from building): no flammable plants shall be planted within 30' of the structure or attachments.
- Zone 2 (30 - 100' from building): a 10' crown separation must be maintained for all conifers and shrubs over 4'. A 4' crown separation must be maintained for shrubs under 4'.
- Plants listed on forest service publication 6.305 FireWise Plant Material can be used in any zone.
- Final existing vegetation to be limbed or removed will be subject to the constraints of the final unit site plans and reviewed on site with a representative from the Wildfire Mitigation Officer.



DECIDUOUS TREE PLANTING
 1 L2 NOT TO SCALE



TYPICAL SMALL SINGLE FAMILY LANDSCAPE

1:120

PLANT LIST FOR TYPICAL LOT LAYOUT

NOTE: ALL PLANT MATERIAL FOUND WITHIN 30' WILDFIRE DEFENSIBLE ZONE IS CHOSEN FROM THE FIREWISE PLANT MATERIALS LIST

COMMON/BOTANICAL NAME	FIRE MITIGATION ZONE	SIZE	COMMENTS
EVERGREEN TREES (ONLY TO BE LOCATED OUTSIDE THE 30' DEFENSIBLE ZONE)			
Colorado Blue Spruce Picea pungens	2	8' ht.	Specimen quality B&B, staked
Colorado Blue Spruce Picea pungens	2	10' ht.	Specimen quality B&B, staked
White Fir Abies concolor	2	8' ht.	Specimen quality B&B, staked
DECIDUOUS TREES			
Quaking Aspen Populus tremuloides	1 & 2	2.5" cal.	Specimen quality B&B, staked
Amur Maple Acer ginnala	1 & 2	2.5" cal.	Specimen quality B&B, staked
Patmore Ash Fraxinus pennsylvanica 'Patmore'	1 & 2	3" cal.	Specimen quality B&B, staked
Shuber Chokecherry Prunus virginiana 'Shubert'	1 & 2	3" cal.	Specimen quality B&B, staked
PERENNIALS (Approximately X sf. @ 12" O.C. spacing)			
Assorted Perennials (All perennials to be chosen by landscape installer from FIREWISE PLANT MATERIALS LIST)			
Blue Avena Grass Helictotrichon sempervirens	1 & 2	1 gal.	Container Full
Little Bluestem Schizochyrium scoparium	1 & 2	1 gal.	Container Full
SEMI-EVERGREEN/BROADLEAF EVERGREEN SHRUBS			
Common Mountain Mahogany Cercocarpus montanus	1 & 2	5 gal.	Container, 5 canes Minimum 24" - 36" ht.

DECIDUOUS SHRUBS			
Arnold's Red Honeysuckle Lonicera tatarica 'Arnold's Red'	1 & 2	5 gal.	Container, 5 canes Minimum 24" - 36" ht.
Burkewood Daphne Daphne burkwoodii 'Somerset'	1 & 2	5 gal.	Container, 5 canes Minimum 18" - 24" ht.
Common Lilac Syringa vulgaris	1 & 2	5 gal.	Container, 5 canes Minimum 24" - 36" ht.
Golden Currant Ribes aureum	1 & 2	5 gal.	Container, 5 canes Minimum 24" - 36" ht.
Mountain Ninebark Physocarpus monogynus	1 & 2	5 gal.	Container, 5 canes Minimum 12" - 18" ht.
Mountain Snowberry Symphoricarpos oreophilus	1 & 2	5 gal.	Container, 5 canes Minimum 10" - 12" ht.
Redtwig Dogwood Cornus stolonifera	1 & 2	5 gal.	Container, 5 canes Minimum 24" - 36" ht.
Sackatoon Serviceberry Amelanchier alnifolia	1 & 2	5 gal.	Container, 5 canes Minimum 24" - 36" ht.
Boulder Raspberry Rubus deliciosus	1 & 2	5 gal.	Container, 5 canes Minimum 18" - 24" ht.
Wax Flower Jamesia americana	1 & 2	5 gal.	Container, 5 canes Minimum 24" - 36" ht.
Russel Buffaloberry Shepherdia canadensis	1 & 2	5 gal.	Container, 5 canes Minimum 24" - 36" ht.

NATIVE SEED REVEGETATION MIX

Scientific name	Common name	Variety
Pascopyrum smithii	Western wheatgrass	
Pseudoroegneria spicata	Beardless wheatgrass	Whitmar
Elymus trachycaulus	Slender wheatgrass	San Luis
Bromus marginatus	Mountain brome	
Leymus cinereus	Basin wildrye	Magnar
Poa secunda	Sandberg bluegrass	
Poa fendleriana	Muttongrass	
Achnatherum hymenoides	Indian ricegrass	
Festuca idahoensis	Idaho fescue	

NATIVE SEED REVEGETATION MIX (Continued)

Scientific name	Common name	Variety
Eriogonum umbellatum	Sulfur-flowered buckwheat	
Achillea m. lanulosa	Western Yarrow	
Symphotrichum chilensis	Pacific aster	
Astragalus cicer	Cicer milkvetch	Monarch
Balsamorhiza sagittata	Arrowleaf balsamroot	
Linum perenne	Blue flax	Appar
Medicago sativa	Alfalfa	Ladak
Penstemon strictus	Rocky Mtn penstemon	Bandera
Sanguisorba minor	Small burnnet	Delar
Onobrychis viciaefolia	Sainfoin	
Crepis acuminata	Tapertip hawksbeard	
Viguera multiflora	Showy Goldeneye	
Artemisia tridentata	Big sage	Vaseyana
Ericameria nauseosus	Rubber rabbitbrush	

DATE 10.01.2024 DRAWN BY MSJ
 VERSION 01 SHEET 1 / 3
 PROJECTION State Plane Colorado North (US Feet)
 DATUM North American Datum 1983 (NAD83)
 SCALE 1:120

DISCLAIMER
 This product is for informational purposes and may not have been prepared for, or be suitable for legal, engineering, or surveying purposes. Users of this information should review or consult the primary data and information sources to ascertain the usability of the information. The maps are distributed "AS-IS" without warranties of any kind, either expressed or implied, including but not limited to warranties of suitability to a particular purpose or use.



WEB www.contourdesigncollective.com
 EMAIL info@contourdesigncollective.com
 PHONE 970.409.9012