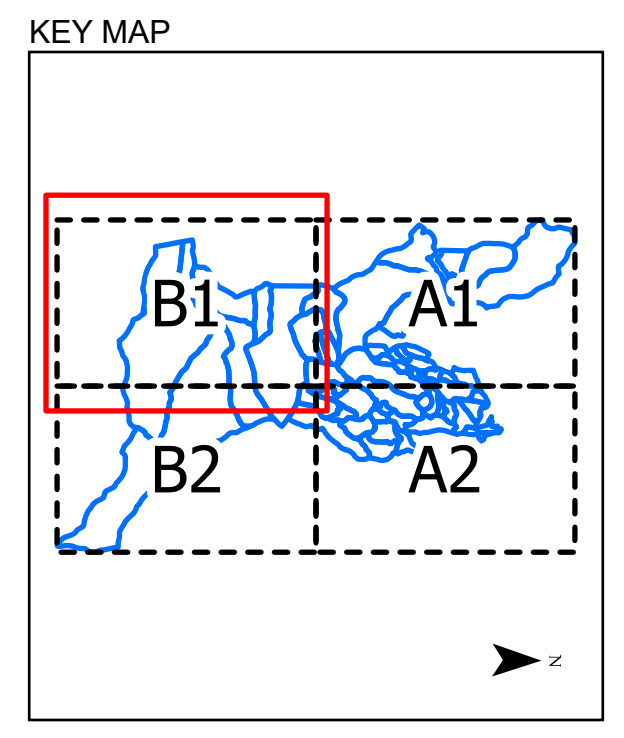
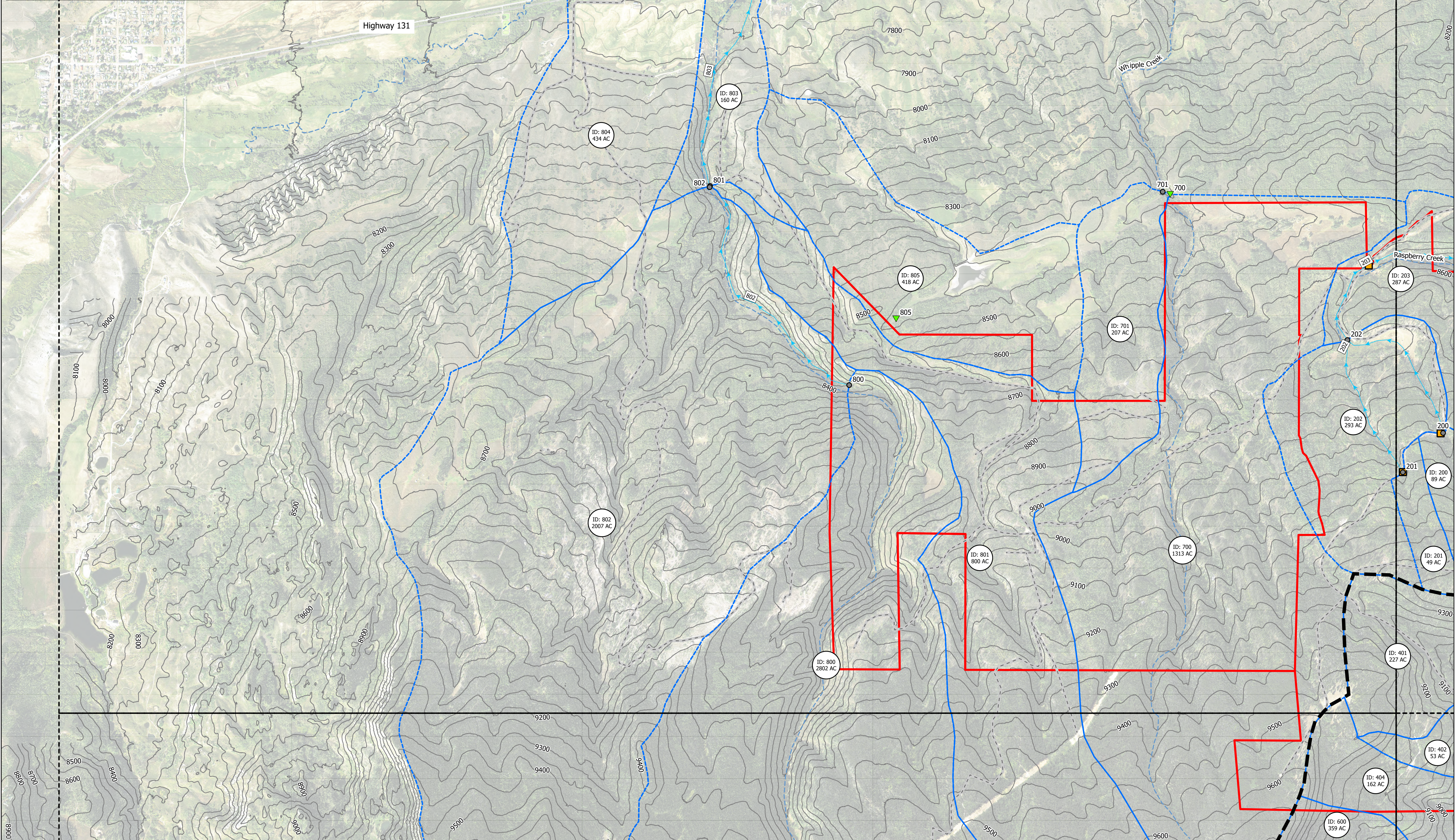


Design Point	Tributary Basin(s)	Area (ac)	Direct Runoff (cfs)		Routed Runoff (cfs)	
			Q5	Q100	Q5	Q100
-	309	157	5.8	77.6	-	-
309	301/302/303/304/305/ 306/307/308/309	-	-	-	8.6	210.5
310	310	85	3.5	46.6	-	-
311	311	38	0.5	25.9	-	-
400	400	483	4.4	165.0	-	-
401	401	227	1.0	82.5	-	-
402	402	53	0.4	29.5	-	-
-	403	34	0.3	17.2	-	-
403	402/403	-	-	-	0.4	46.0
404	404	162	0.8	73.7	-	-
-	405	61	0.5	30.2	-	-
405	404/405	-	-	-	0.9	101.1
-	406	224	1.4	100.7	-	-
406	401/402/403/404/405/406	-	-	-	2.6	305.5
407	407	26	0.3	14.3	-	-
-	408	73	1.4	36.5	-	-
408	407/408	-	-	-	1.4	47.6
-	409	306	4.0	139.1	-	-
409	401/402/403/404/405/ 406/407/408/409	-	-	-	4.6	458.9
-	410	46	5.1	40.6	-	-
410	400/401/402/403/404/405/ 406/407/408/409/410/411	-	-	-	11.9	644.2
411	411	13	1.7	10.7	-	-
-	412	64	6.2	49.9	-	-
412	400/401/402/403/404/405/ 406/407/408/409/410/411/ 412	-	-	-	15.4	672.0
-	413	30	2.7	19.7	-	-
413	400/401/402/403/404/405/ 406/407/408/409/410/411/ 412/413	-	-	-	17.1	684.1
-	414	53	5.8	38.6	-	-
414	400/401/402/403/404/405/ 406/407/408/409/410/411/ 412/413/414	-	-	-	21.7	740.6
415	415	156	2.5	61.2	-	-
-	416	117	1.3	66.5	-	-
416	400/401/402/403/404/405/ 406/407/408/409/410/411/ 412/413/414/415/416	-	-	-	21.7	698.7
417	417	79	0.8	56.7	-	-
418	418	63	0.7	54.6	-	-
422	422	14	0.1	9.4	-	-
500	500	43	0.3	19.7	-	-
501	501	131	1.4	66.6	-	-
-	502	130	1.5	62.7	-	-
502	500/501/502	-	-	-	2.1	142.3
503	503	140	1.3	62.0	-	-
-	504	82	5.8	48.7	-	-
504	500/501/502/503/504	-	-	-	6.7	237.2
600	600	359	1.2	114.1	-	-

Existing Runoff (Sheet B1)

Design Point	Tributary Basin(s)	Area (ac)	Direct Runoff (cfs)		Routed Runoff (cfs)	
			Q5	Q100	Q5	Q100
-	202	293	1.6	122.7	-	-
202	200/201/202	-	-	-	1.6	145.4
-	203	287	2.0	150.3	-	-
-	700	1313	1.7	230.1	-	-
700	700/701	-	-	-	2.5	300.7
701	701	207	1.0	80.3	-	-
800	800	2802	3.9	411.2	-	-
801	801	800	0.5	74.2	-	-
-	802	2007	6.5	608.6	-	-
802	800/801/802	-	-	-	7.1	878.7
-	803	160	0.8	62.0	-	-
803	800/801/802/803	-	-	-	7.0	904.9
804	804	434	2.1	149.2	-	-
805	805	418	1.4	133.9	-	-



Legend

- Sheet Boundary
- Existing Roadways
- Existing Crossings
- Existing Basins
- Property Line
- Existing 50ft Contours
- Drainageways
- Existing SWMM Links
- Existing SWMM Points
 - Outfall Points
 - Design Points
 - Existing Ridgeline
- Existing Drainage Label

0 500 1,000 2,000 Feet

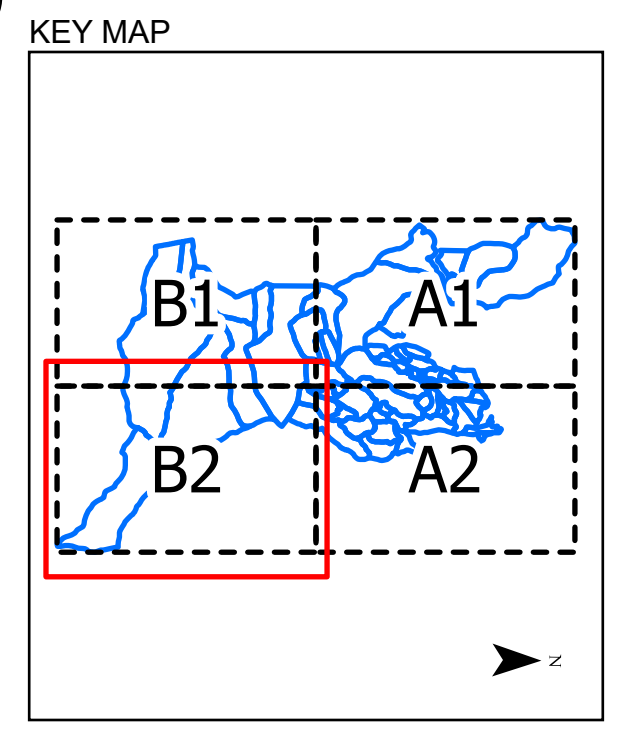
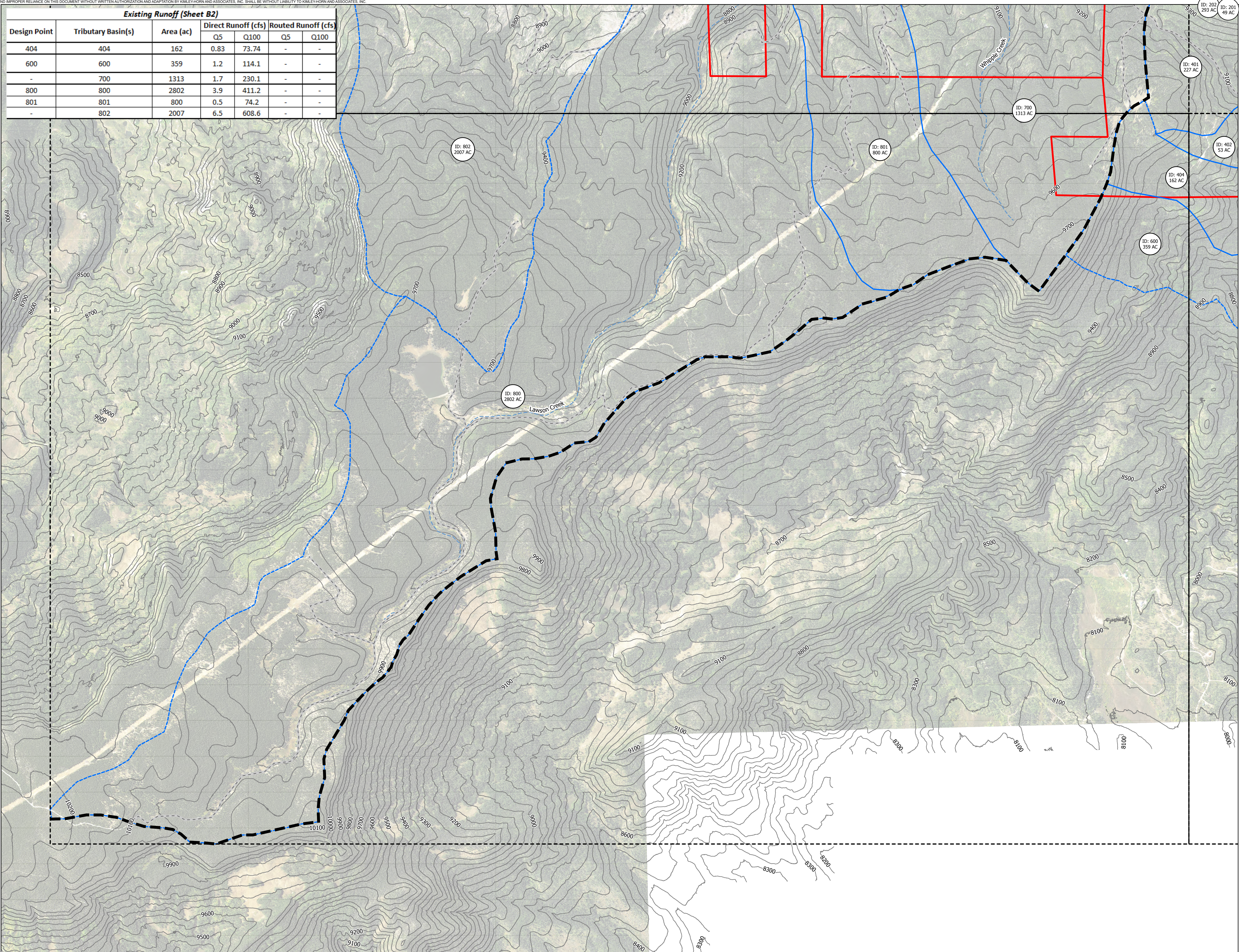
Kimley-Horn
 © 2024 KIMLEY-HORN AND ASSOCIATES, INC.
 Engineering, Planning and Environmental Consultants
 2 North Nevada Avenue, Suite 800
 Colorado Springs, CO 719 455-0180

DESIGNED BY: SMH
 DRAWN BY: TOS
 CHECKED BY: BAH
 DATE: 9/17/2024

**STAGECOACH
 DRAINAGE BASIN STUDY
 EXISTING DRAINAGE MAP**

PROJECT NO.
19677800
 DRAWING NAME
EX_DRN
 Sheet: B1

Existing Runoff (Sheet B2)						
Design Point	Tributary Basin(s)	Area (ac)	Direct Runoff (cfs)		Routed Runoff (cfs)	
			Q5	Q100	Q5	Q100
404	404	162	0.83	73.74	-	-
600	600	359	1.2	114.1	-	-
-	700	1313	1.7	230.1	-	-
800	800	2802	3.9	411.2	-	-
801	801	800	0.5	74.2	-	-
-	802	2007	6.5	608.6	-	-



Legend

- Sheet Boundary
- Existing Roadways
- Existing Crossings
- Existing Basins
- Property Line
- Existing 50ft Contours
- Drainageways
- Existing SWMM Links

Existing SWMM Points

- Outfall Points
- Design Points
- Existing Ridgeline

BASIN ID
ACREAGE Existing Drainage Label

0 500 1,000 2,000 Feet

DESIGNED BY: SMH
DRAWN BY: TOS
CHECKED BY: BAH
DATE: 9/17/2024

Kimley-Horn
© 2024 KIMLEY-HORN AND ASSOCIATES, INC.
Engineering, Planning and Environmental Consultants
2 North Nevada Avenue, Suite 900
Colorado Springs, CO 719 455-0180

PROJECT NO.
19677800

DRAWING NAME
EX_DRN

Sheet: B2

STAGECOACH
DRAINAGE BASIN STUDY
EXISTING DRAINAGE MAP