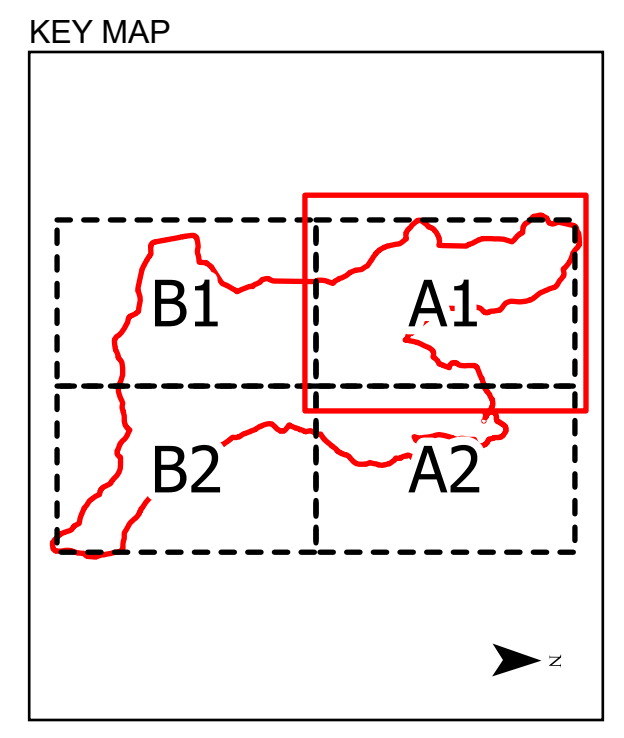
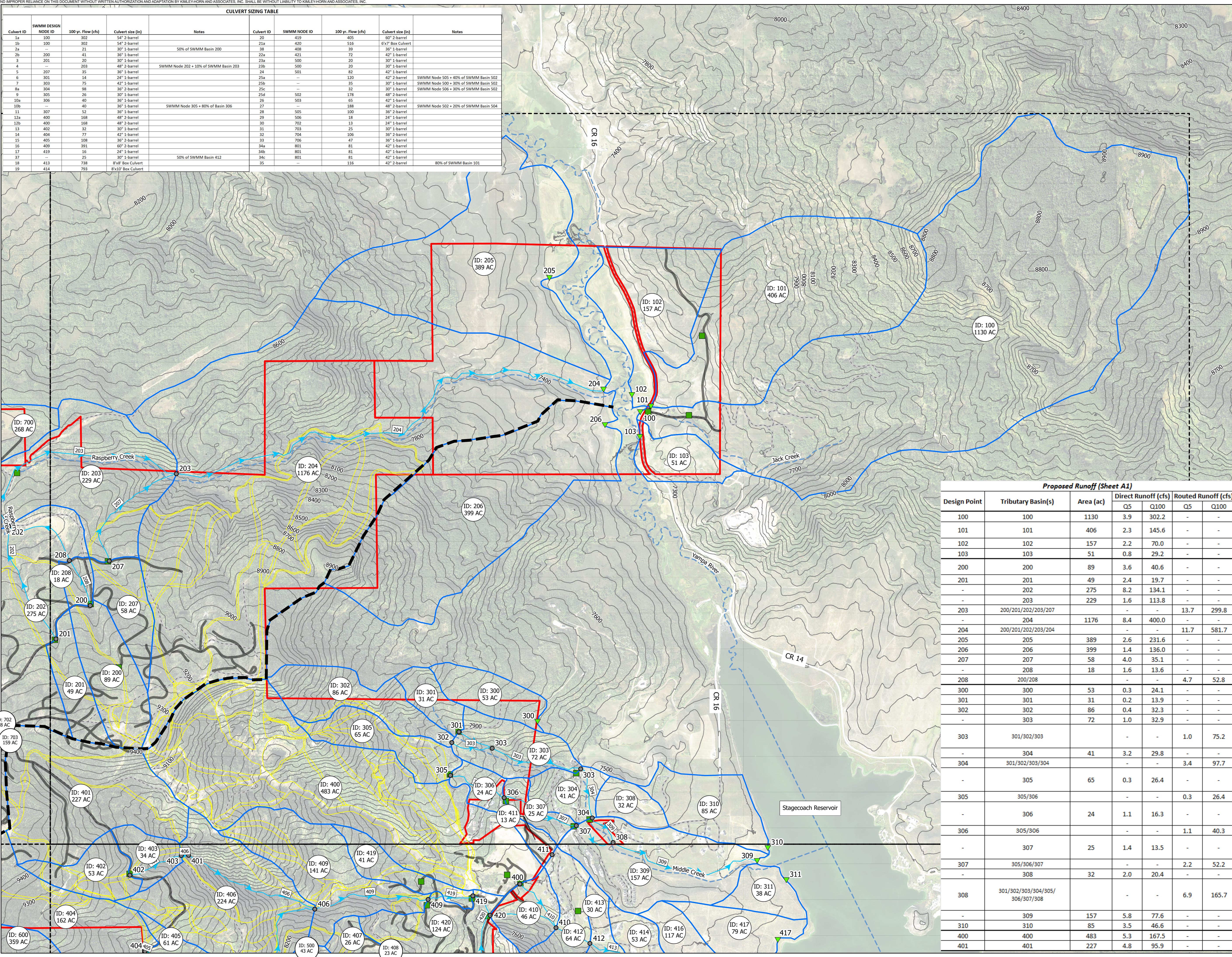


		© 2024 KIMLEY-HORN AND ASSOCIATES, INC. Engineering, Planning and Environmental Consultants	
		2 North Nevada Avenue, Suite 800 Colorado Springs, CO 719 455-0180	
DESIGNED BY: SNM	DRAWN BY: TOS	CHECKED BY: BAH	DATE: 11/22/2024
STAGECOACH DRAINAGE BASIN STUDY PROPOSED DRAINAGE MAP - OVERVIEW			
PROJECT NO. 196778000		DRAWING NAME PROP OVERVIEW	

Culvert ID	SWMM DESIGN NODE ID	100 yr. Flow (cfs)	Culvert size (in)	Notes	Culvert ID	SWMM DESIGN NODE ID	100 yr. Flow (cfs)	Culvert size (in)	Notes
1a	100	302	54" 2-barrel		20	419	405	60" 2-barrel	
1b	100	302	54" 2-barrel		21a	420	516	6'x7' Box Culvert	
2a	201	21	30" 1-barrel		38	408	39	36" 1-barrel	
2b	201	41	36" 1-barrel	50% of SWMM Basin 200	22a	421	72	42" 1-barrel	
3	201	20	30" 1-barrel		23a	500	20	30" 1-barrel	
4	203	48	48" 2-barrel	SWMM Node 202 + 10% of SWMM Basin 203	23b	500	20	30" 1-barrel	
5	207	35	36" 1-barrel		24	501	82	42" 1-barrel	
6	301	14	24" 1-barrel		25a	---	220	42" 2-barrel	SWMM Node 505 + 40% of SWMM Basin 502
7	303	75	42" 1-barrel		25b	---	35	30" 1-barrel	SWMM Node 500 + 30% of SWMM Basin 502
8a	304	98	36" 2-barrel		25c	---	32	30" 1-barrel	SWMM Node 506 + 30% of SWMM Basin 502
9	305	26	30" 1-barrel		25d	502	178	48" 2-barrel	
10a	306	40	36" 1-barrel		26	503	65	42" 1-barrel	
10b	---	40	36" 1-barrel	SWMM Node 305 + 80% of Basin 306	27	---	188	48" 2-barrel	SWMM Node 502 + 20% of SWMM Basin 504
11	307	52	36" 1-barrel		28	505	100	36" 2-barrel	
12a	420	168	48" 2-barrel		29	506	18	24" 1-barrel	
12b	400	168	48" 2-barrel		30	702	13	24" 1-barrel	
13	402	32	30" 1-barrel		31	703	25	30" 1-barrel	
14	404	77	42" 1-barrel		32	704	106	36" 2-barrel	
15	405	108	36" 2-barrel		33	706	47	36" 1-barrel	
16	409	391	60" 2-barrel		34a	801	81	42" 1-barrel	
17	419	16	24" 1-barrel		34b	801	81	42" 1-barrel	
18	413	78	30" 1-barrel	50% of SWMM Basin 412	34c	801	81	42" 1-barrel	
19	414	793	8'x10' Box Culvert		35	---	116	42" 2-barrel	80% of SWMM Basin 101



Legend

- Sheet Boundary
- Property Line
- Proposed Ski Runs
- Proposed Crossings
- Existing Roadways
- Existing 50ft Contours
- Drainageways
- Proposed SWMM Links
- Proposed SWMM Points
 - Outfall Points
 - Design Points
 - Proposed Ridgeline
 - Proposed Basins
 - Proposed Roadways
- BASIN ID ACREAGE Proposed Drainage Label
- Detention Pond ID Proposed Detention Pond Label

0 500 1,000 2,000 Feet

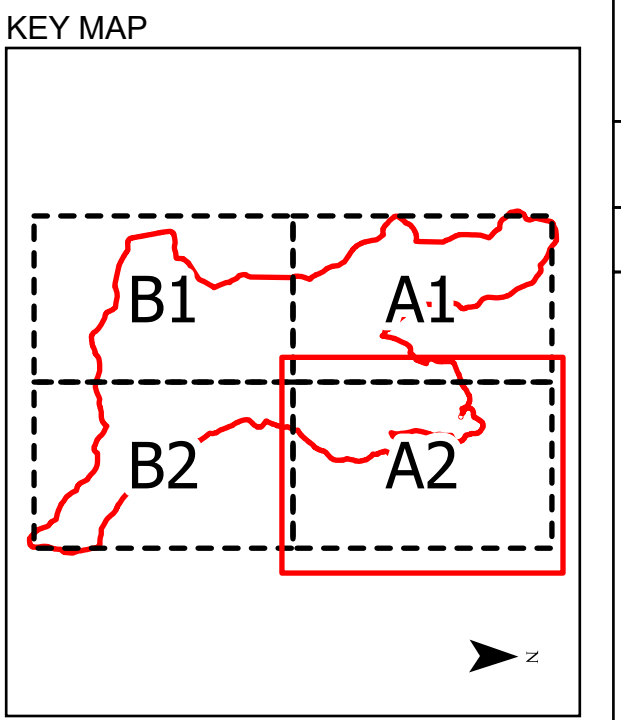
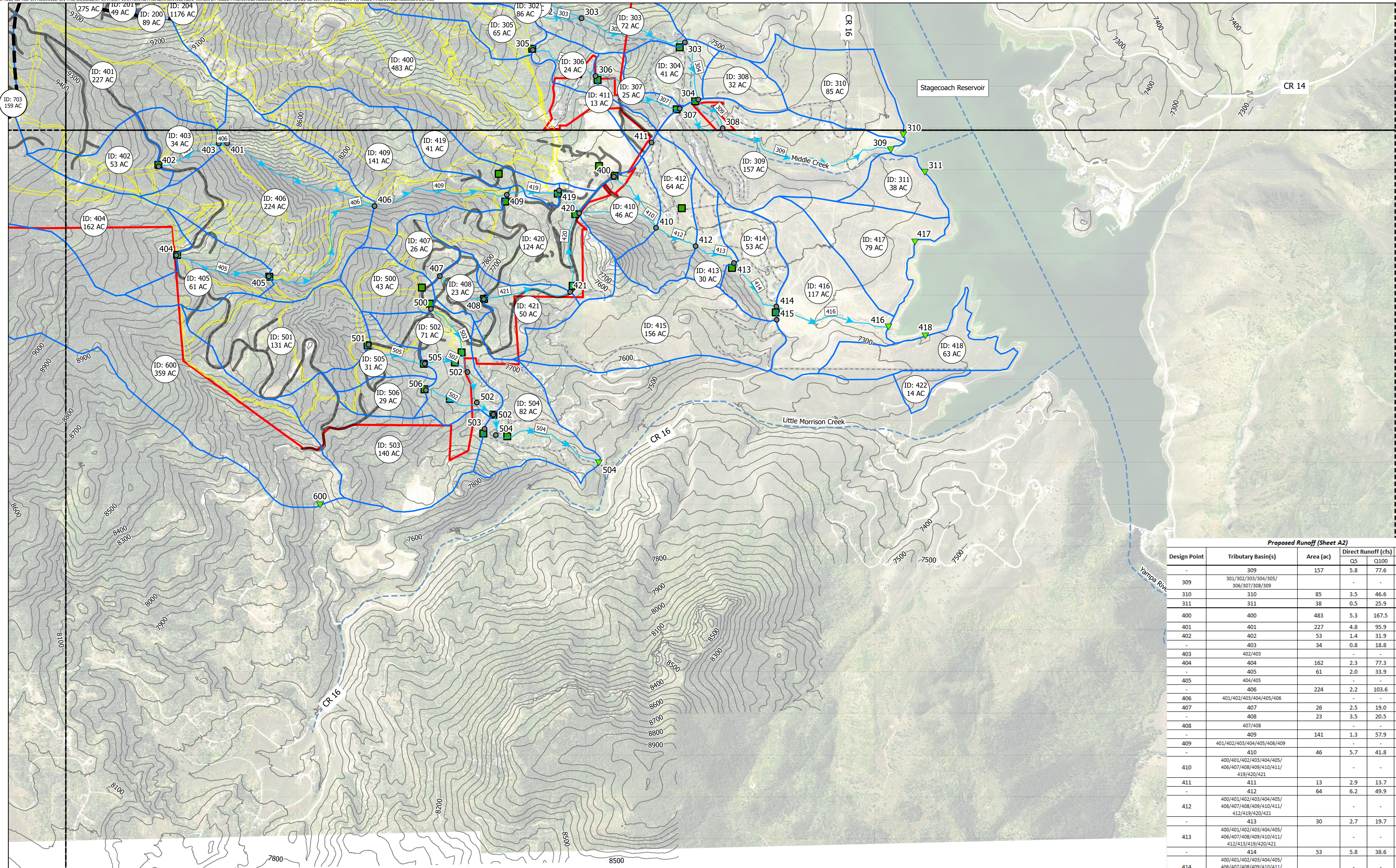
Design Point	Tributary Basin(s)	Area (ac)	Direct Runoff (cfs)		Routed Runoff (cfs)	
			Q5	Q100	Q5	Q100
100	100	1130	3.9	302.2	-	-
101	101	406	2.3	145.6	-	-
102	102	157	2.2	70.0	-	-
103	103	51	0.8	29.2	-	-
200	200	89	3.6	40.6	-	-
201	201	49	2.4	19.7	-	-
-	202	275	8.2	134.1	-	-
-	203	229	1.6	113.8	-	-
203	200/201/202/203/207	-	-	-	13.7	299.8
-	204	1176	8.4	400.0	-	-
204	200/201/202/203/204	-	-	-	11.7	581.7
205	205	389	2.6	231.6	-	-
206	206	399	1.4	136.0	-	-
207	207	58	4.0	35.1	-	-
-	208	18	1.6	13.6	-	-
208	200/208	-	-	-	4.7	52.8
300	300	53	0.3	24.1	-	-
301	301	31	0.2	13.9	-	-
302	302	86	0.4	32.3	-	-
-	303	72	1.0	32.9	-	-
303	301/302/303	-	-	-	1.0	75.2
-	304	41	3.2	29.8	-	-
304	301/302/303/304	-	-	-	3.4	97.7
-	305	65	0.3	26.4	-	-
305	305/306	-	-	-	0.3	26.4
-	306	24	1.1	16.3	-	-
306	305/306	-	-	-	1.1	40.3
-	307	25	1.4	13.5	-	-
307	305/306/307	-	-	-	2.2	52.2
-	308	32	2.0	20.4	-	-
308	301/302/303/304/305/306/307/308	-	-	-	6.9	165.7
-	309	157	5.8	77.6	-	-
310	310	85	3.5	46.6	-	-
400	400	483	5.3	167.5	-	-
401	401	227	4.8	95.9	-	-

DESIGNED BY: SNM
 DRAWN BY: TOS
 CHECKED BY: BAH
 DATE: 11/22/2024

STAGECOACH DRAINAGE BASIN STUDY PROPOSED DRAINAGE MAP

PROJECT NO. 196778000
 DRAWING NAME PROP_DRN
 Sheet: A1

Kimley-Horn
 © 2024 KIMLEY-HORN AND ASSOCIATES, INC.
 Engineering, Planning and Environmental Consultants
 2 North Nevada Avenue, Suite 800
 Colorado Springs, CO (719) 455-0180



Legend

- Sheet Boundary
- Property Line
- Proposed Ski Runs
- Proposed Crossings
- Existing Roadways
- Existing 50ft Contours
- Drainageways
- Proposed SWMM Links
- Proposed SWMM Points**
 - Outfall Points
 - Design Points
 - Proposed Ridgeline
 - Proposed Basins
 - Proposed Roadways
- BASIN ID ACREAGE Proposed Drainage Label
- Detention Pond ID Proposed Detention Pond Label

0 500 1,000 2,000 Feet

Proposed Runoff (Sheet A2)

Design Point	Tributary Basin(s)	Area (ac)	Direct Runoff (cfs)		Routed Runoff (cfs)	
			Q5	Q100	Q5	Q100
-	309	157	5.8	77.6	-	-
309	301/302/303/304/305/306/307/308/309	-	-	-	8.6	210.3
310	310	85	3.5	46.6	-	-
311	311	38	0.5	25.9	-	-
400	400	483	5.3	167.5	-	-
401	401	227	4.8	95.9	-	-
402	402	53	1.4	31.9	-	-
-	403	34	0.8	18.8	-	-
403	402/403	-	-	-	1.7	49.9
404	404	162	2.3	77.3	-	-
-	405	61	2.0	33.9	-	-
405	404/405	-	-	-	3.4	108.1
-	406	224	2.2	103.6	-	-
406	401/402/403/404/405/406	-	-	-	9.5	333.7
407	407	26	2.5	19.0	-	-
-	408	23	3.5	20.5	-	-
408	407/408	-	-	-	5.7	38.8
-	409	141	1.3	57.9	-	-
409	401/402/403/404/405/406/409	-	-	-	10.4	390.8
-	410	46	5.7	41.8	-	-
410	400/401/402/403/404/405/406/407/408/409/410/411/412/420/421	-	-	-	26.6	700.3
411	411	13	2.9	13.7	-	-
-	412	64	6.2	49.9	-	-
412	400/401/402/403/404/405/406/407/408/409/410/411/412/413/419/420/421	-	-	-	29.9	726.5
-	413	30	2.7	19.7	-	-
413	400/401/402/403/404/405/406/407/408/409/410/411/412/413/419/420/421	-	-	-	31.6	737.9
-	414	53	5.8	38.6	-	-
414	400/401/402/403/404/405/406/407/408/409/410/411/412/413/414/415/416/419/420/421	-	-	-	36.4	792.7
415	415	156	2.5	61.2	-	-
-	416	117	1.3	66.5	-	-
416	400/401/402/403/404/405/406/407/408/409/410/411/412/413/414/415/416/419/420/421	-	-	-	35.9	751.3
417	417	79	0.8	56.7	-	-
418	418	63	0.7	54.6	-	-
-	419	41	0.9	15.5	-	-
419	401/402/403/404/405/406/409/419	-	-	-	11.0	405.3
-	420	124	15.7	104.5	-	-
420	401/402/403/404/405/406/407/408/409/410/411/412/413/419/420/421	-	-	-	20.3	515.5
-	421	50	4.5	36.5	-	-
421	407/408/421	-	-	-	8.6	71.8
422	422	14	0.1	9.4	-	-
500	500	43	0.6	20.4	-	-
501	501	131	8.7	82.0	-	-
-	502	71	4.4	47.4	-	-
502	500/501/502/505/506	-	-	-	14.8	178.3
503	503	140	2.3	64.6	-	-
-	504	82	5.7	48.5	-	-
504	500/501/502/503/504/505/506	-	-	-	18.2	276.6
-	505	31	2.1	19.3	-	-
505	501/505	-	-	-	10.3	100.3
506	506	29	1.4	17.5	-	-
600	600	359	1.6	115.3	-	-

CULVERT SIZING TABLE

Culvert ID	SWMM DESIGN NODE ID	100 yr. Flow (cfs)	Culvert size (in)	Notes	Culvert ID	SWMM NODE ID	100 yr. Flow (cfs)	Culvert size (in)	Notes
1a	100	302	54" 2-barrel		20	419	405	60" 2-barrel	
1b	100	302	54" 2-barrel		21a	400	516	60" Box Culvert	
2a	--	21	30" 1-barrel	50% of SWMM Basin 200	38	408	39	36" 1-barrel	
2b	200	41	36" 1-barrel		22a	421	72	42" 1-barrel	
3	201	20	30" 1-barrel		23a	500	20	30" 1-barrel	
4	--	203	48" 2-barrel	SWMM Node 202 + 10% of SWMM Basin 203	23b	500	20	30" 1-barrel	
5	207	35	36" 1-barrel		24	501	82	42" 1-barrel	
6	301	14	24" 1-barrel		25a	--	120	42" 2-barrel	SWMM Node 505 + 40% of SWMM Basin 502
7	303	75	42" 1-barrel		25b	--	35	30" 1-barrel	SWMM Node 505 + 30% of SWMM Basin 502
8a	304	98	36" 2-barrel		25c	--	32	30" 1-barrel	SWMM Node 506 + 30% of SWMM Basin 502
9	305	26	30" 1-barrel		25d	502	178	48" 2-barrel	
10a	306	40	36" 1-barrel		26	503	65	42" 1-barrel	
10b	40	40	36" 1-barrel	SWMM Node 305 + 80% of Basin 306	27	188	27	36" 1-barrel	SWMM Node 502 + 20% of SWMM Basin 504
11	307	52	36" 1-barrel		28	505	100	36" 2-barrel	
12a	400	168	48" 2-barrel		29	506	18	24" 1-barrel	
12b	400	168	48" 2-barrel		30	702	13	24" 1-barrel	
13	402	32	30" 1-barrel		31	703	25	30" 1-barrel	
14	404	77	42" 1-barrel		32	704	106	36" 2-barrel	
15	405	108	36" 2-barrel		33	706	47	36" 1-barrel	
16	406	166	48" 2-barrel		34a	801	81	42" 1-barrel	
17	419	16	24" 1-barrel		34b	801	81	42" 1-barrel	
37	--	25	30" 1-barrel	50% of SWMM Basin 412	34c	801	81	42" 1-barrel	
18	413	738	6'x8' Box Culvert		35	--	116	42" 2-barrel	80% of SWMM Basin 101
19	414	793	8'x10' Box Culvert		--	--	--	--	