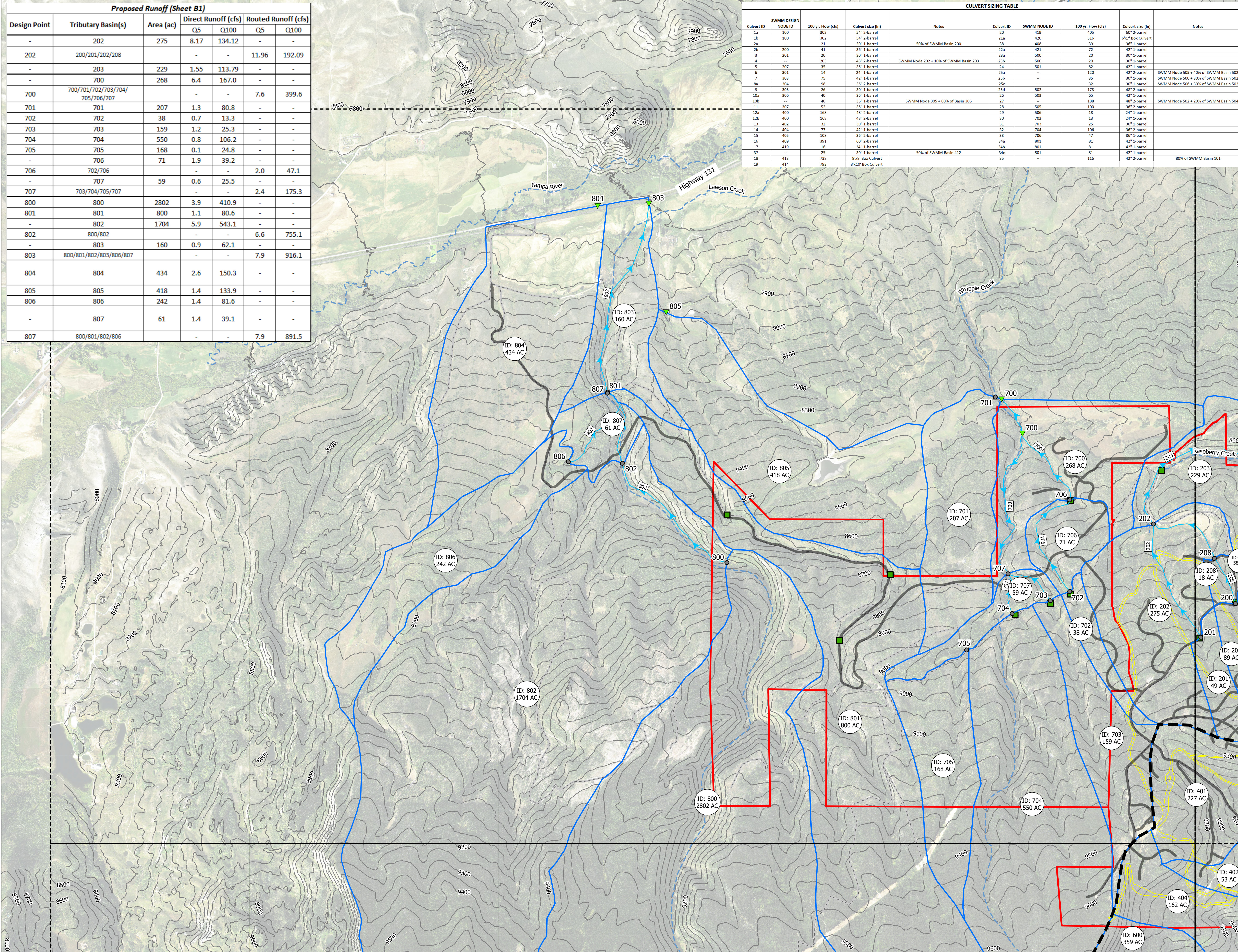


Proposed Runoff (Sheet B1)						
Design Point	Tributary Basin(s)	Area (ac)	Direct Runoff (cfs)		Routed Runoff (cfs)	
			Q5	Q100	Q5	Q100
-	202	275	8.17	134.12	-	-
202	200/201/202/208	-	-	-	11.96	192.09
-	203	229	1.55	113.79	-	-
700	700/701/702/703/704/705/706/707	268	6.4	167.0	-	-
701	701	207	1.3	80.8	-	-
702	702	38	0.7	13.3	-	-
703	703	159	1.2	25.3	-	-
704	704	550	0.8	106.2	-	-
705	705	168	0.1	24.8	-	-
-	706	71	1.9	39.2	-	-
706	702/706	-	-	-	2.0	47.1
-	707	59	0.6	25.5	-	-
707	703/704/705/707	-	-	-	2.4	175.3
800	800	2802	3.9	410.9	-	-
801	801	800	1.1	80.6	-	-
-	802	1704	5.9	543.1	-	-
802	800/802	-	-	-	6.6	755.1
-	803	160	0.9	62.1	-	-
803	800/801/802/803/806/807	-	-	-	7.9	916.1
804	804	434	2.6	150.3	-	-
805	805	418	1.4	133.9	-	-
806	806	242	1.4	81.6	-	-
-	807	61	1.4	39.1	-	-
807	800/801/802/806	-	-	-	7.9	891.5

CULVERT SIZING TABLE									
Culvert ID	SWMM DESIGN NODE ID	100 yr. Flow (cfs)	Culvert size (in)	Notes	Culvert ID	SWMM NODE ID	100 yr. Flow (cfs)	Culvert size (in)	Notes
1a	100	302	36" 2-barrel		21a	419	405	60" 2-barrel	
1b	100	302	54" 2-barrel		21a	420	516	6x7' Box Culvert	
2a	200	21	30" 1-barrel	50% of SWMM Basin 200	38	408	39	36" 1-barrel	
2b	200	41	30" 1-barrel		22a	421	22	42" 1-barrel	
3	201	20	30" 1-barrel		23a	500	20	30" 1-barrel	
4	203	203	48" 2-barrel	SWMM Node 202 + 10% of SWMM Basin 203	23b	500	20	30" 1-barrel	
5	207	35	36" 1-barrel		24	501	82	42" 1-barrel	
6	301	14	24" 1-barrel		25a	120	120	42" 2-barrel	SWMM Node 505 + 40% of SWMM Basin 502
7	303	75	42" 1-barrel		25b	35	35	30" 1-barrel	SWMM Node 500 + 30% of SWMM Basin 502
8a	304	98	36" 2-barrel		25c	32	30" 1-barrel	SWMM Node 506 + 30% of SWMM Basin 502	
9	305	26	30" 1-barrel		25d	502	178	48" 2-barrel	
10a	306	40	30" 1-barrel		26	503	65	42" 1-barrel	
10b	40	40	36" 1-barrel	SWMM Node 305 + 80% of Basin 306	27	188	188	48" 2-barrel	SWMM Node 502 + 20% of SWMM Basin 504
11	307	52	36" 1-barrel		28	505	100	36" 2-barrel	
12a	400	168	48" 2-barrel		29	506	18	24" 1-barrel	
12b	400	168	48" 2-barrel		30	702	13	24" 1-barrel	
13	402	32	30" 1-barrel		31	703	25	30" 1-barrel	
14	404	77	42" 1-barrel		32	704	106	36" 2-barrel	
15	405	108	30" 2-barrel		33	706	47	30" 1-barrel	
16	409	391	60" 2-barrel		34a	801	81	42" 1-barrel	
17	419	16	24" 1-barrel		34b	801	81	42" 1-barrel	
18	413	738	8x8' Box Culvert	50% of SWMM Basin 412	34c	801	81	42" 1-barrel	
19	414	793	8x10' Box Culvert		35	116	116	42" 2-barrel	80% of SWMM Basin 101



KEY MAP

Legend

- Sheet Boundary
- Property Line
- Proposed Ski Runs
- Proposed Crossings
- Existing Roadways
- Existing 50ft Contours
- Drainageways
- Proposed SWMM Links
- Proposed SWMM Points
 - Outfall Points
 - Design Points
 - Proposed Ridgeline
 - Proposed Basins
 - Proposed Roadways
- BASIN ID ACREAGE Proposed Drainage Label
- Detention Pond ID Proposed Detention Pond Label

0 500 1,000 2,000 Feet

Kimley-Horn
 © 2024 KIMLEY-HORN AND ASSOCIATES, INC.
 Engineering, Planning and Environmental Consultants
 2 North Nevada Avenue, Suite 800
 Colorado Springs, CO (719) 455-0180

DESIGNED BY: SNM
 DRAWN BY: TOS
 CHECKED BY: BAH
 DATE: 11/22/2024

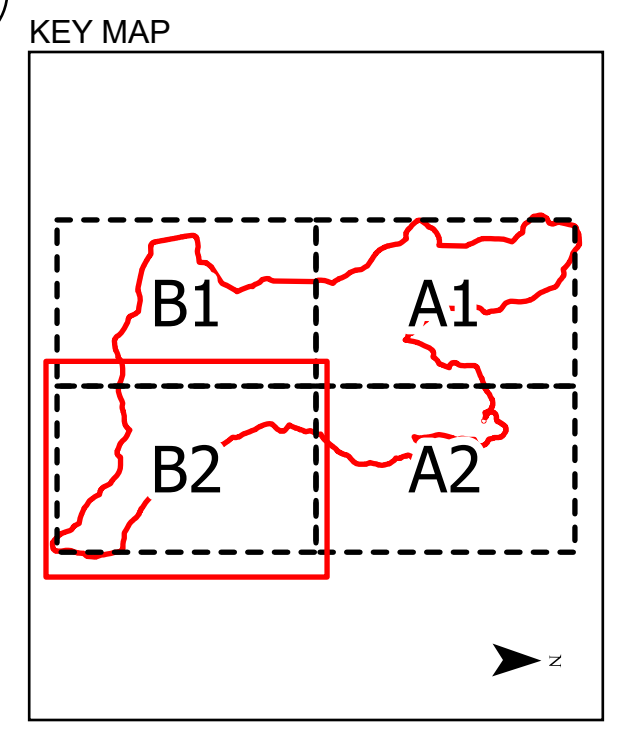
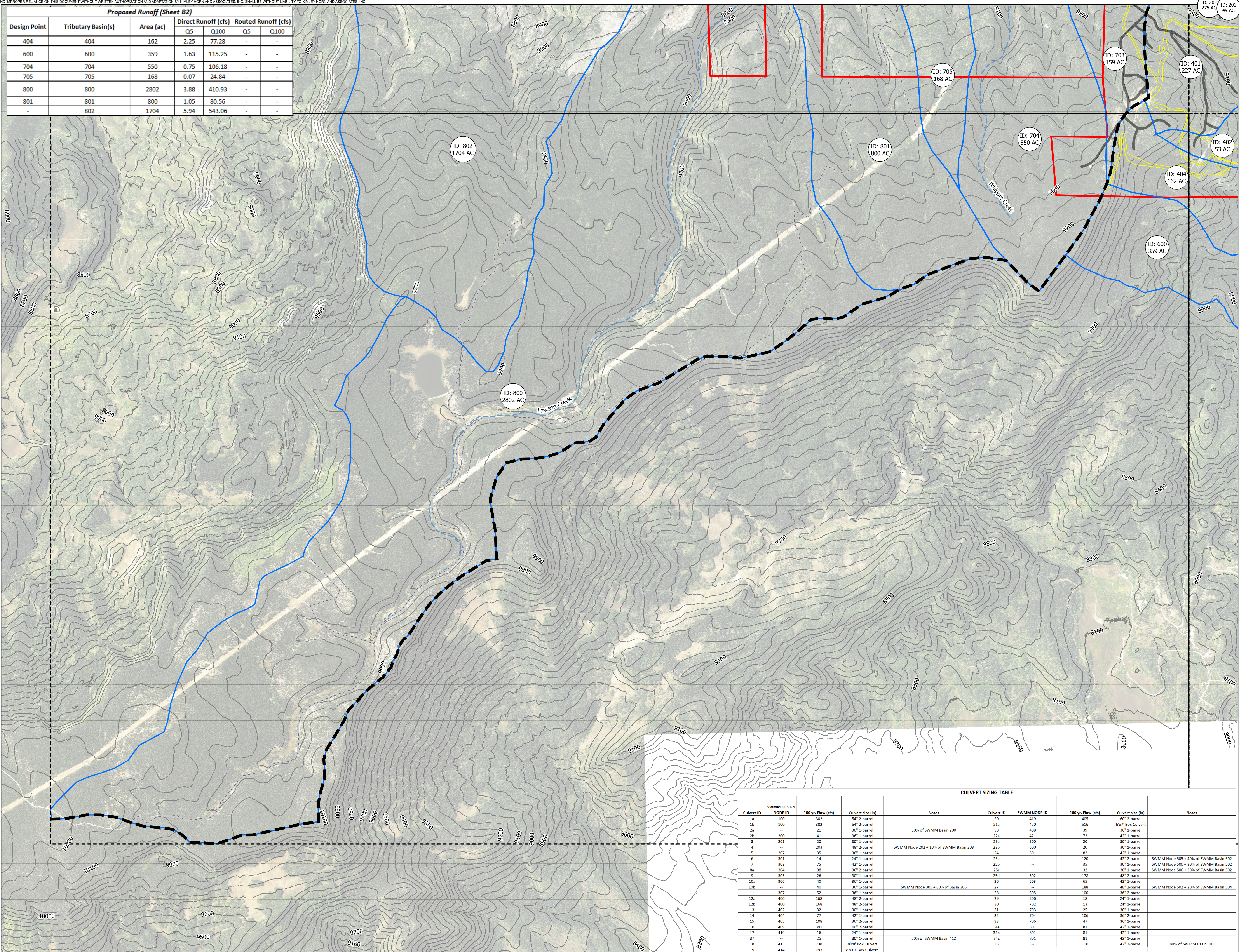
**STAGECOACH
 DRAINAGE BASIN STUDY
 PROPOSED DRAINAGE MAP**

PROJECT NO.
196778000

DRAWING NAME
PROP_DRN

Sheet: B1

Proposed Runoff (Sheet B2)						
Design Point	Tributary Basin(s)	Area (ac)	Direct Runoff (cfs)		Routed Runoff (cfs)	
			Q5	Q100	Q5	Q100
404	404	162	2.25	77.28	-	-
600	600	359	1.63	115.25	-	-
704	704	550	0.75	106.18	-	-
705	705	168	0.07	24.84	-	-
800	800	2802	3.88	410.93	-	-
801	801	800	1.05	80.56	-	-
-	802	1704	5.94	543.06	-	-



Legend

- Sheet Boundary
- Property Line
- Proposed Ski Runs
- Proposed Crossings
- Existing Roadways
- Existing 50ft Contours
- Drainageways
- Proposed SWMM Links

Proposed SWMM Points

- Outfall Points
- Design Points
- Proposed Ridgeline
- Proposed Basins
- Proposed Roadways

Proposed Drainage Label

Proposed Detention Pond Label

0 500 1,000 2,000 Feet

CULVERT SIZING TABLE

Culvert ID	SWMM DESIGN NODE ID	100 yr. Flow (cfs)	Culvert size (in)	Notes	Culvert ID	SWMM NODE ID	100 yr. Flow (cfs)	Culvert size (in)	Notes
1a	100	302	54" 2-barrel		20	419	405	60" 2-barrel	
1b	100	302	54" 2-barrel		21a	420	516	60" Box Culvert	
2a	21	21	30" 1-barrel	50% of SWMM Basin 200	22a	408	39	36" 1-barrel	
2b	200	41	36" 1-barrel		22b	421	72	42" 1-barrel	
3	201	20	30" 1-barrel		23a	500	20	30" 1-barrel	
4	203	203	48" 2-barrel	SWMM Node 202 + 10% of SWMM Basin 203	23b	500	20	30" 1-barrel	
5	207	35	36" 1-barrel		24	501	82	42" 1-barrel	
6	301	14	24" 1-barrel		25a	--	120	42" 2-barrel	SWMM Node 505 + 40% of SWMM Basin 502
7	303	75	42" 1-barrel		25b	--	35	30" 1-barrel	SWMM Node 505 + 30% of SWMM Basin 502
8a	304	98	36" 2-barrel		25c	--	32	30" 1-barrel	SWMM Node 506 + 30% of SWMM Basin 502
9	305	26	30" 1-barrel		25d	502	178	48" 2-barrel	
10a	306	40	36" 1-barrel		26	503	65	42" 1-barrel	
10b	--	40	36" 1-barrel	SWMM Node 305 + 80% of Basin 306	27	40	188	48" 2-barrel	SWMM Node 502 + 20% of SWMM Basin 504
11	307	52	36" 1-barrel		28	505	100	36" 2-barrel	
12a	400	168	48" 2-barrel		29	506	18	24" 1-barrel	
12b	400	168	48" 2-barrel		30	702	13	24" 1-barrel	
13	402	32	30" 1-barrel		31	703	35	30" 1-barrel	
14	404	77	42" 1-barrel		32	704	106	36" 2-barrel	
15	405	108	36" 2-barrel		33	706	47	36" 1-barrel	
16	409	291	60" 2-barrel		34a	801	81	42" 1-barrel	
17	419	16	24" 1-barrel		34b	801	81	42" 1-barrel	
37	--	25	30" 1-barrel	50% of SWMM Basin 412	34c	801	81	42" 1-barrel	
38	413	738	8'x8' Box Culvert		35	--	116	42" 2-barrel	80% of SWMM Basin 101
39	414	731	8'x10' Box Culvert						

DESIGNED BY: SMH
DRAWN BY: TOS
CHECKED BY: BAH
DATE: 11/22/2024

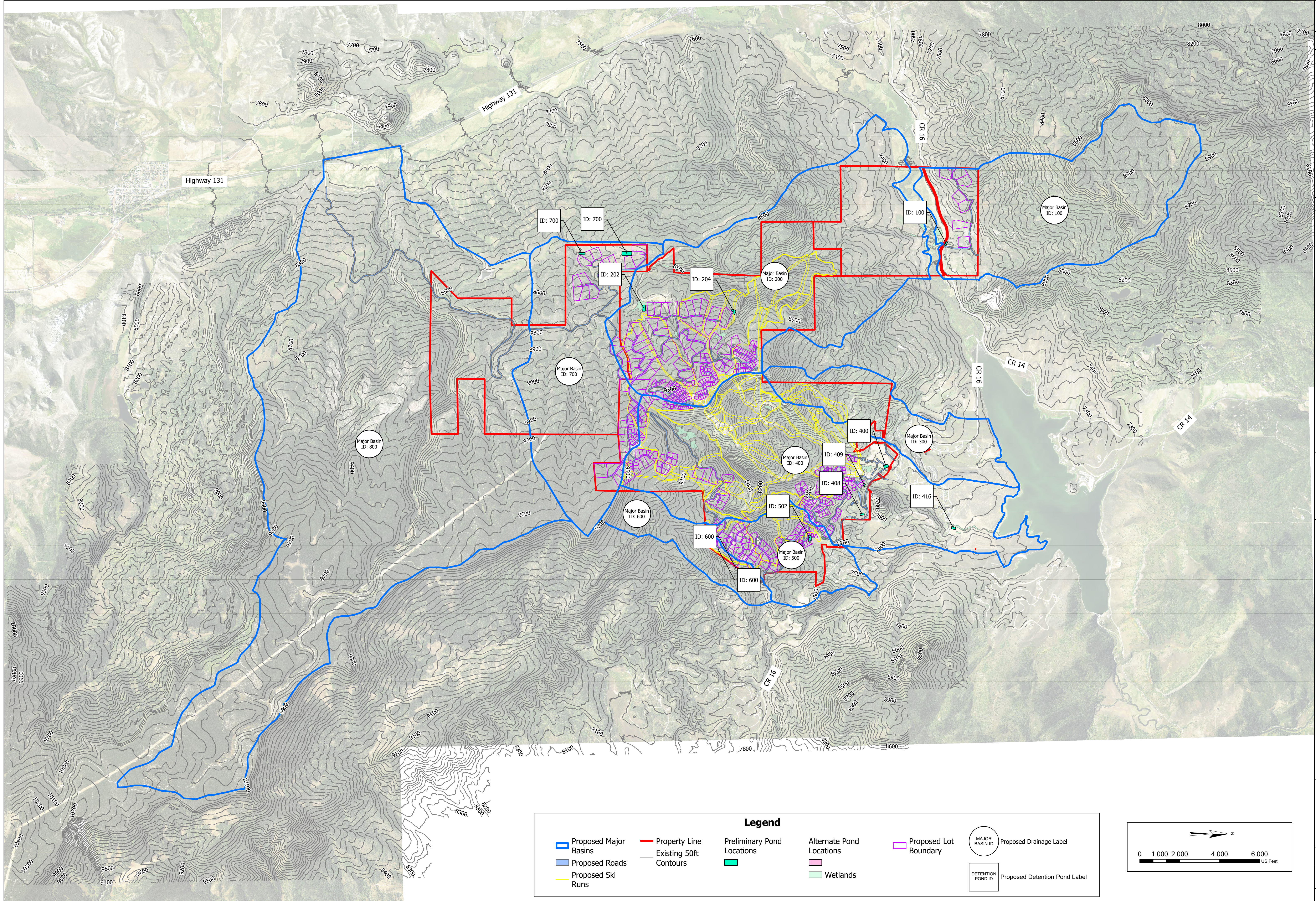
PROJECT NO.
196778000

DRAWING NAME
PROP_DRN

Sheet: B2

Kimley-Horn
 © 2024 KIMLEY-HORN AND ASSOCIATES, INC.
 Engineering, Planning and Environmental Consultants
 2 North Nevada Avenue, Suite 800
 Colorado Springs, CO (719) 455-0180

STAGECOACH DRAINAGE BASIN STUDY PROPOSED DRAINAGE MAP



Kimley-Horn	
© 2024 KIMLEY-HORN AND ASSOCIATES, INC. Engineering, Planning and Environmental Consultants 2 North Nevada Avenue, Suite 800 Colorado Springs, CO (719) 455-0180	
DESIGNED BY: SNM	CHECKED BY: BAH
DRAWN BY: TOS	DATE: 11/22/2024
PROJECT NO. 196778000	
DRAWING NAME PROP POND OVERVIEW	

STAGECOACH DRAINAGE BASIN STUDY
PROPOSED POND LOCATION MAP - OVERVIEW