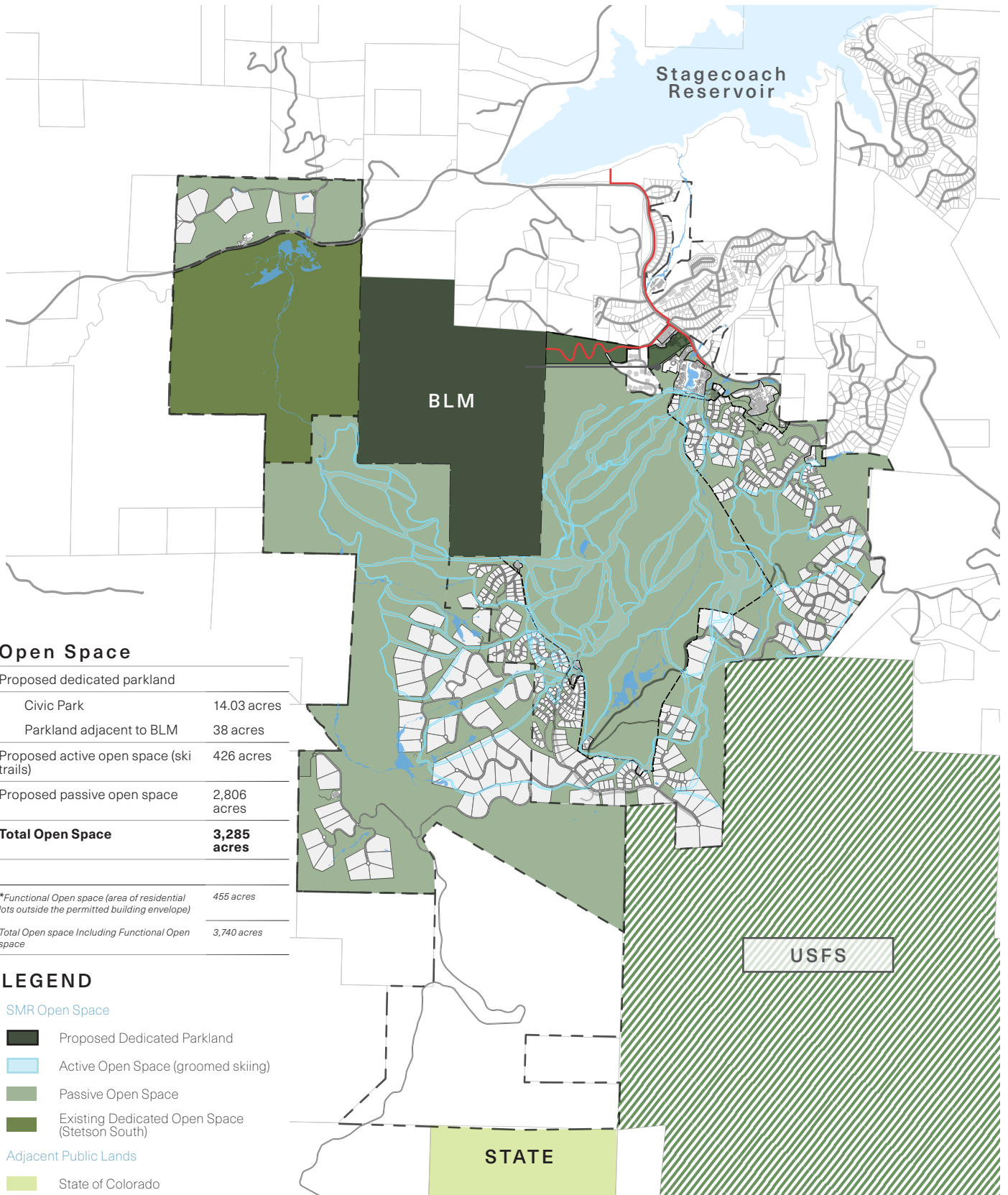


OPEN SPACE DESIGNATION, DEDICATION AND MAINTENANCE INFORMATION

Stagecoach Mountain Ranch



Open Space

Proposed dedicated parkland	
Civic Park	14.03 acres
Parkland adjacent to BLM	38 acres
Proposed active open space (ski trails)	426 acres
Proposed passive open space	2,806 acres
Total Open Space	3,285 acres
*Functional Open space (area of residential lots outside the permitted building envelope)	
	455 acres
<i>Total Open space Including Functional Open space</i>	<i>3,740 acres</i>

LEGEND

SMR Open Space

- Proposed Dedicated Parkland
- Active Open Space (groomed skiing)
- Passive Open Space
- Existing Dedicated Open Space (Stetson South)

Adjacent Public Lands

- State of Colorado
- Bureau of Land Management (BLM)
- United States Forest Service (USFS)
- Proposed Trail

Note: All proposed SMR open space to be owned, managed and maintained by the HOA (see draft CCR's, Appendix I)

