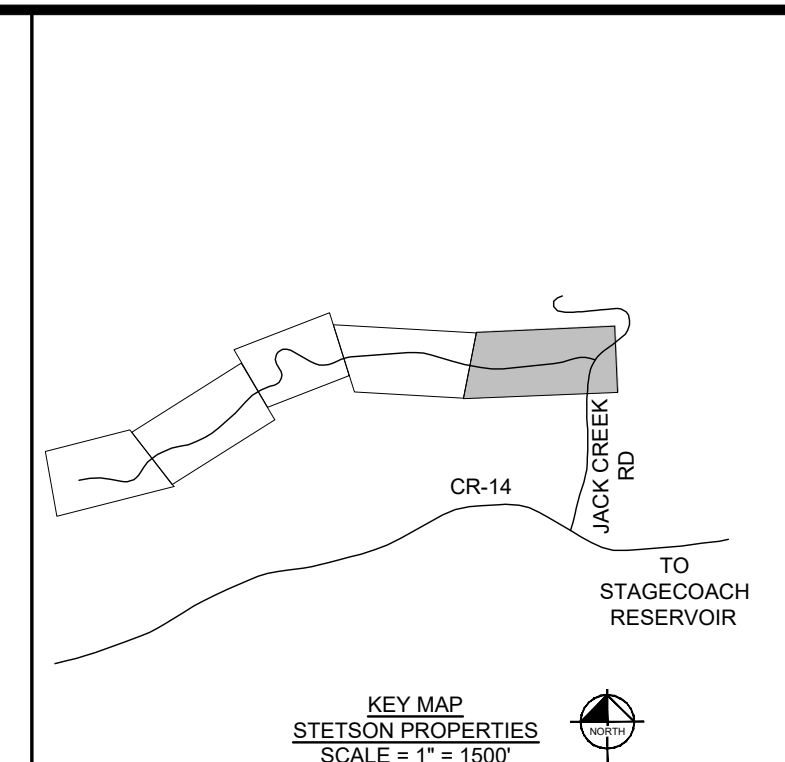
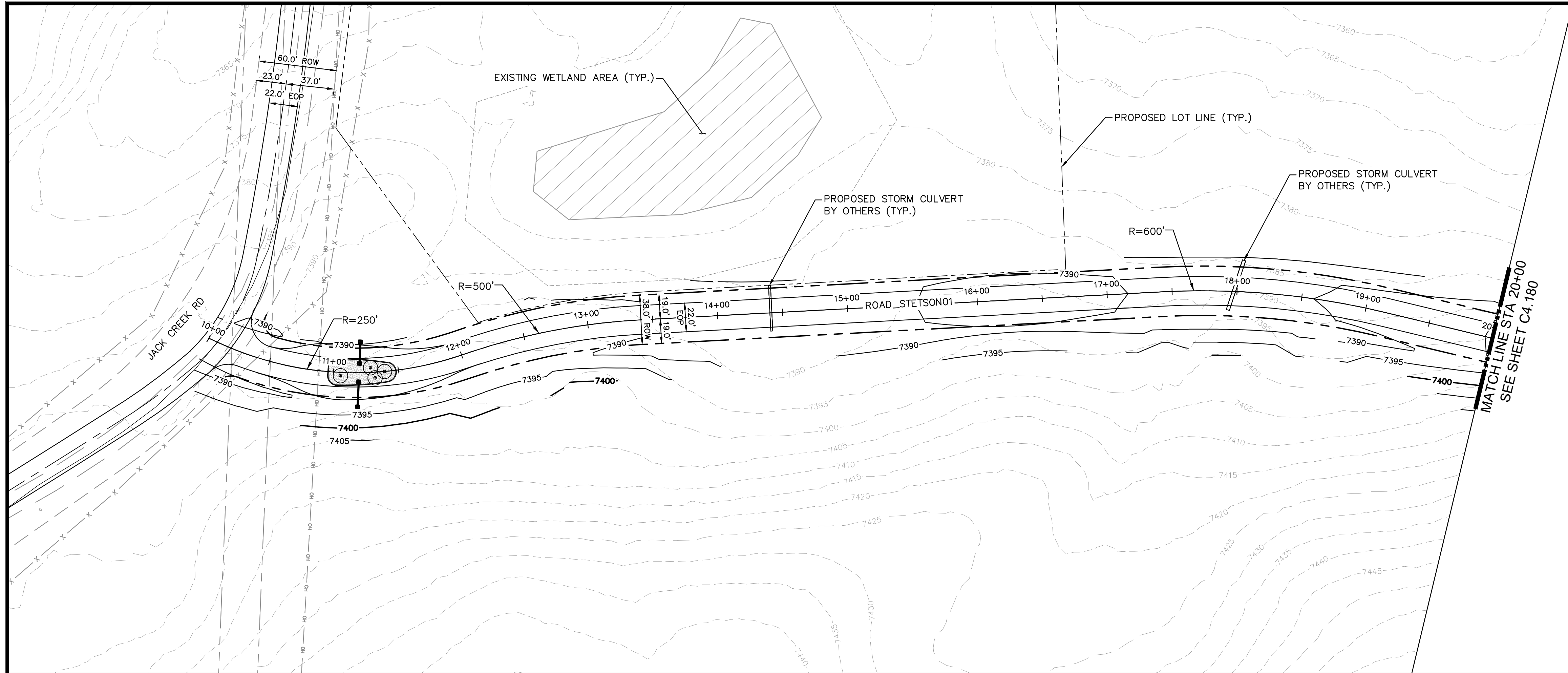
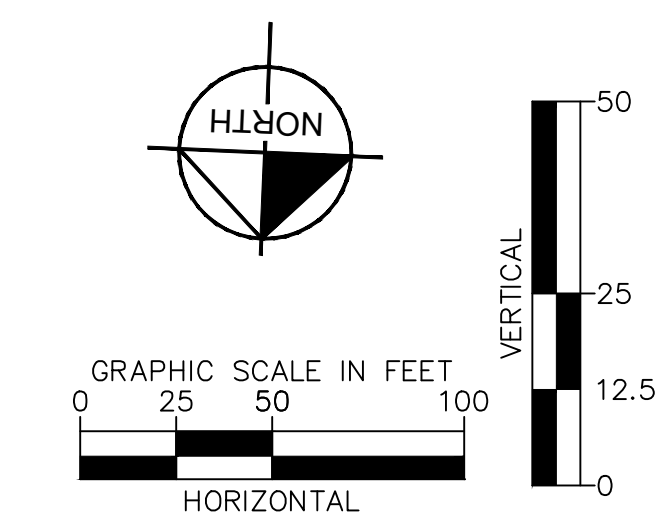
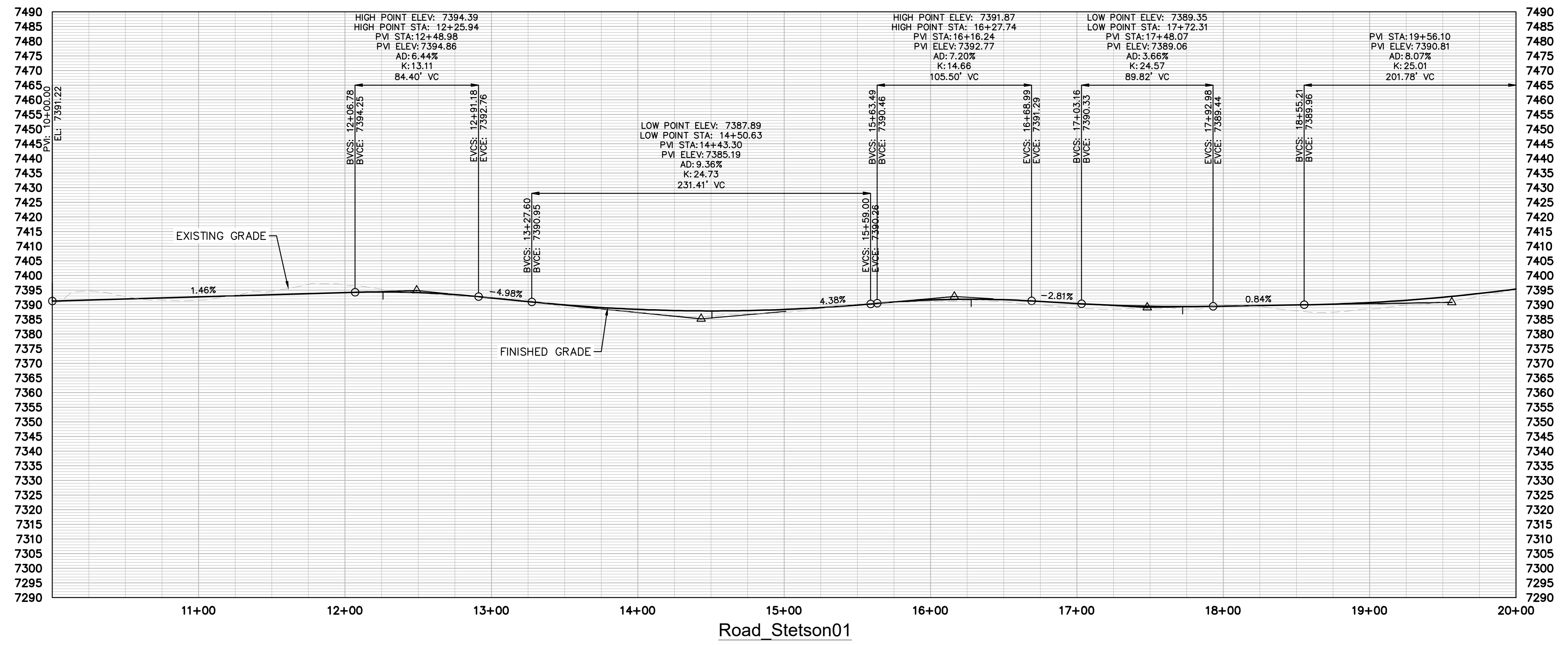


k:\cos\_civil\196778000\_stagcoach\CADD\plansheets\CDs\Stetson\Road\_Stetson01 [10+00 - 62+13.08].dwg Lundberg, Andrew 12/4/2024 1:14 PM



**LEGEND**

- PROPERTY LINE
- PROPOSED LOT LINE
- - - - - EXISTING MAJOR CONTOUR
- - - - - EXISTING MINOR CONTOUR
- EXISTING WATER MAIN
- EXISTING SANITARY SEWER MAIN
- EXISTING GAS MAIN
- EXISTING ELECTRIC LINE
- EXISTING STORM SEWER
- EXISTING EASEMENT
- - - - - 50' WETLAND BOUNDARY
- POND LIMITS
- SANITARY SEWER
- SANITARY SEWER - LOW PRESSURE
- SANITARY SEWER - FORCE MAIN
- WATER MAIN - DISTRIBUTION
- WATERMAIN - TRANSMISSION
- COMMUNICATION LINE
- ELECTRIC LINE
- SANITARY SEWER MANHOLE
- FIRE HYDRANT
- EXISTING SKI RUN
- PROPOSED SKI RUN
- EXISTING WETLAND
- PROPOSED DETENTION POND AREA
- PROPOSED BRIDGE
- PROPOSED CULVERT



NO.	REVISION	BY	DATE	APPR.

**Kimley»Horn**  
 2024 KIMLEY-HORN AND ASSOCIATES, INC.  
 2 North Nevada Avenue, Suite 900  
 Colorado Springs, Colorado 80903 (719) 453-0180

DESIGNED BY: JGJ  
 DRAWN BY: CAS  
 CHECKED BY: EJJ  
 DATE: 11/26/24

STAGECOACH MOUNTAIN RANCH  
 ROUTT COUNTY, COLORADO  
 PRELIMINARY CIVIL CONSTRUCTION DOCUMENTS  
 ROAD\_STETSON01 [10+00 - 20+00]

PRELIMINARY  
 FOR REVIEW ONLY  
 NOT FOR  
 CONSTRUCTION  
**Kimley»Horn**  
 Kimley-Horn and Associates, Inc.

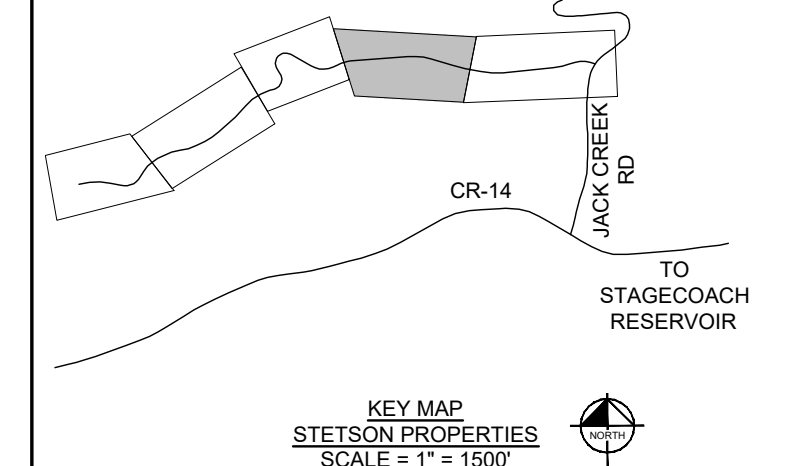
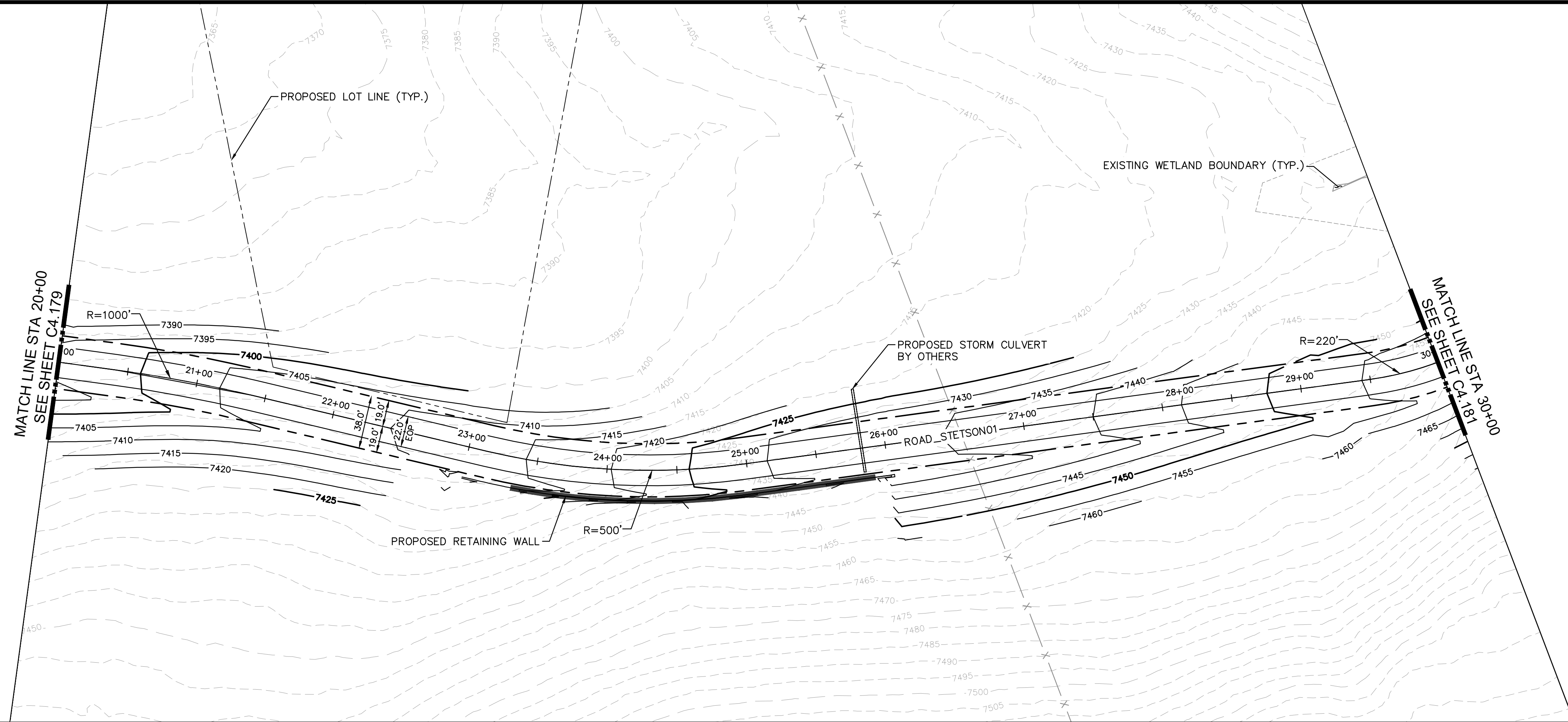
PROJECT NO.  
 196778000

SHEET  
 C4.179

k:\cos\_civil\196778000\_stagcoach\CADD\plansheets\CDs\Stetson\Road\_Stetson01 [10+00 - 62+13.08].dwg Lundberg, Andrew 12/4/2024 1:15 PM

MATCH LINE STA 20+00  
SEE SHEET C4.179

MATCH LINE STA 30+00  
SEE SHEET C4.181



**LEGEND**

	PROPERTY LINE
	PROPOSED LOT LINE
	EXISTING MAJOR CONTOUR
	EXISTING MINOR CONTOUR
	EXISTING WATER MAIN
	EXISTING SANITARY SEWER MAIN
	EXISTING GAS MAIN
	EXISTING ELECTRIC LINE
	EXISTING STORM SEWER
	EXISTING EASEMENT
	50' WETLAND BOUNDARY
	POND LIMITS
	SANITARY SEWER
	SANITARY SEWER - LOW PRESSURE
	SANITARY SEWER - FORCE MAIN
	WATER MAIN - DISTRIBUTION
	WATERMAIN - TRANSMISSION
	COMMUNICATION LINE
	ELECRIC LINE
	SANITARY SEWER MANHOLE
	FIRE HYDRANT
	EXISTING SKI RUN
	PROPOSED SKI RUN
	EXISTING WETLAND
	PROPOSED DETENTION POND AREA
	PROPOSED BRIDGE
	PROPOSED CULVERT

NO.	REVISION	BY	DATE	APPR

**Kimley»Horn**  
 2024 KIMLEY-HORN AND ASSOCIATES, INC.  
 2 North Nevada Avenue, Suite 900  
 Colorado Springs, Colorado 80903 (719) 453-0180

DESIGNED BY: JGJ  
 DRAWN BY: CAS  
 CHECKED BY: EJJ  
 DATE: 11/26/24

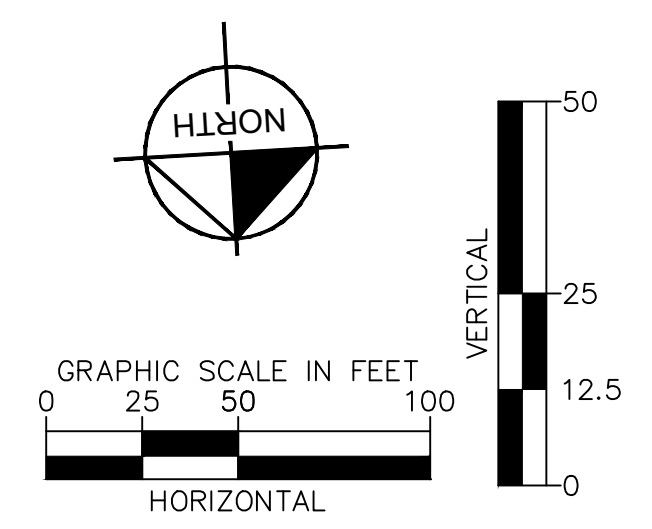
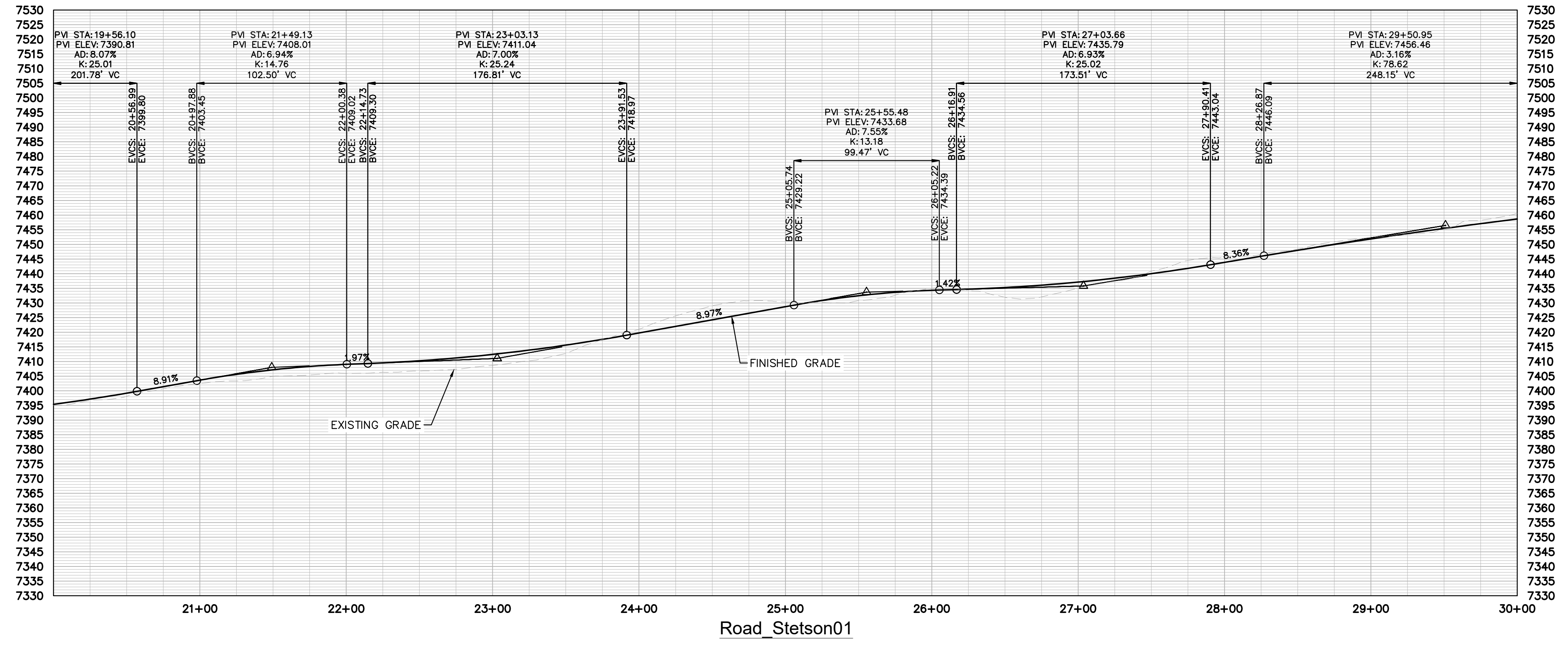
STAGECOACH MOUNTAIN RANCH  
 ROUTT COUNTY, COLORADO  
 PRELIMINARY CIVIL CONSTRUCTION DOCUMENTS  
 ROAD\_STETSON01 [20+00 - 30+00]

**PRELIMINARY**  
 FOR REVIEW ONLY  
 NOT FOR CONSTRUCTION

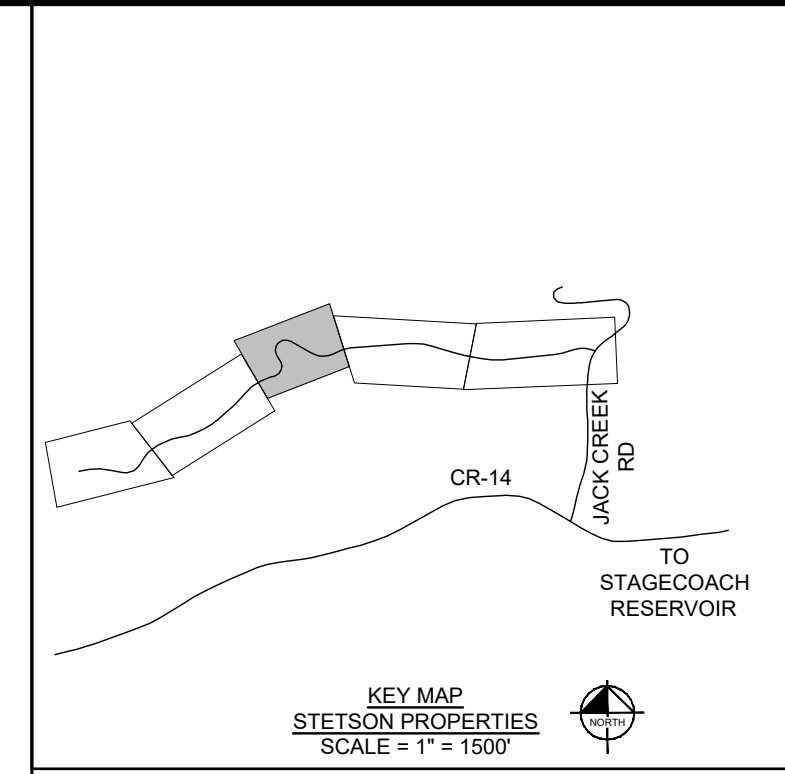
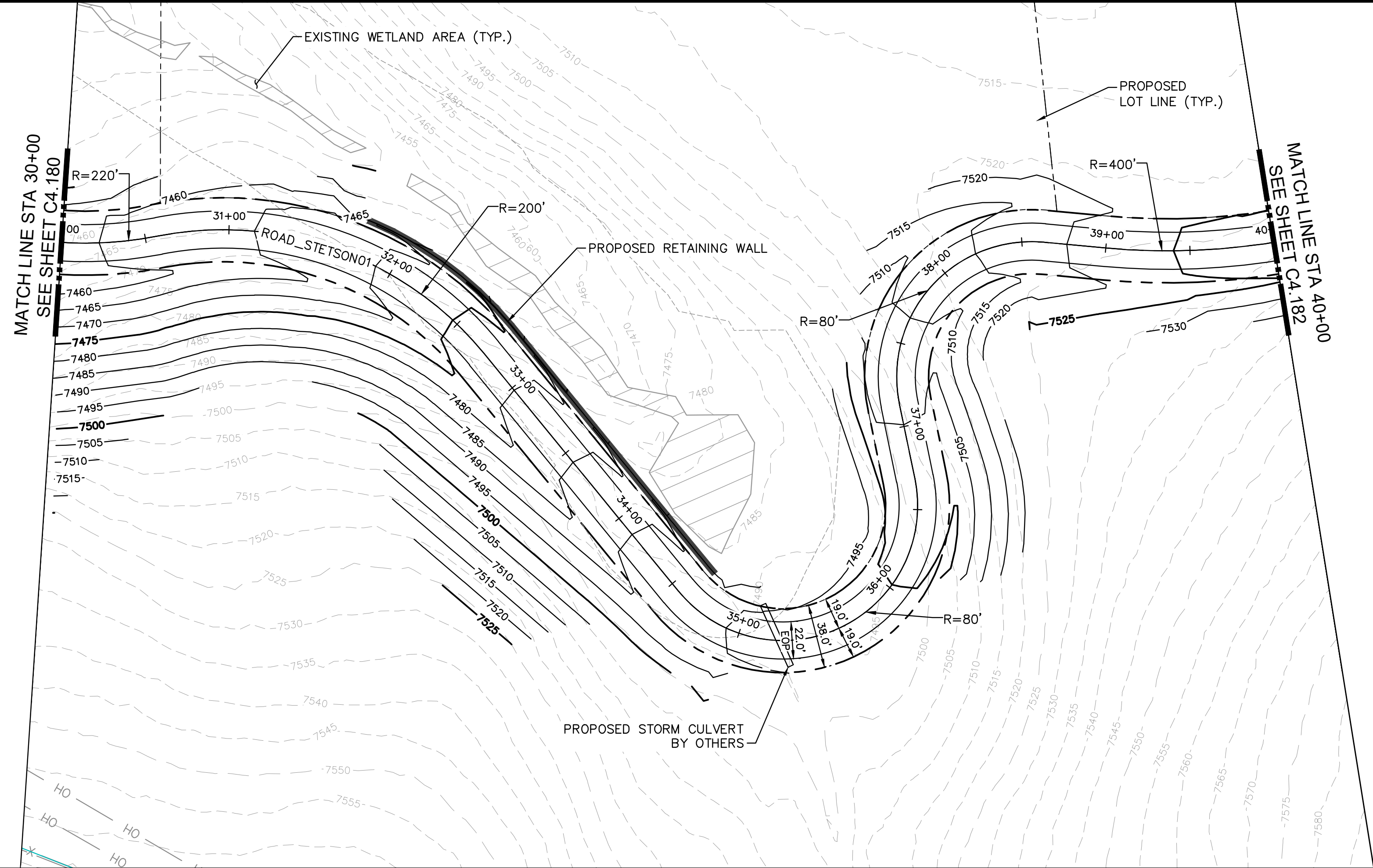
**Kimley»Horn**  
 Kimley-Horn and Associates, Inc.

PROJECT NO.  
196778000

SHEET  
C4.180

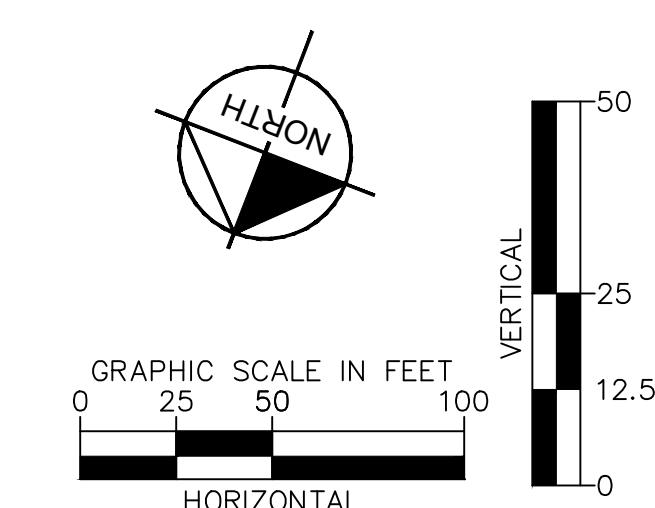
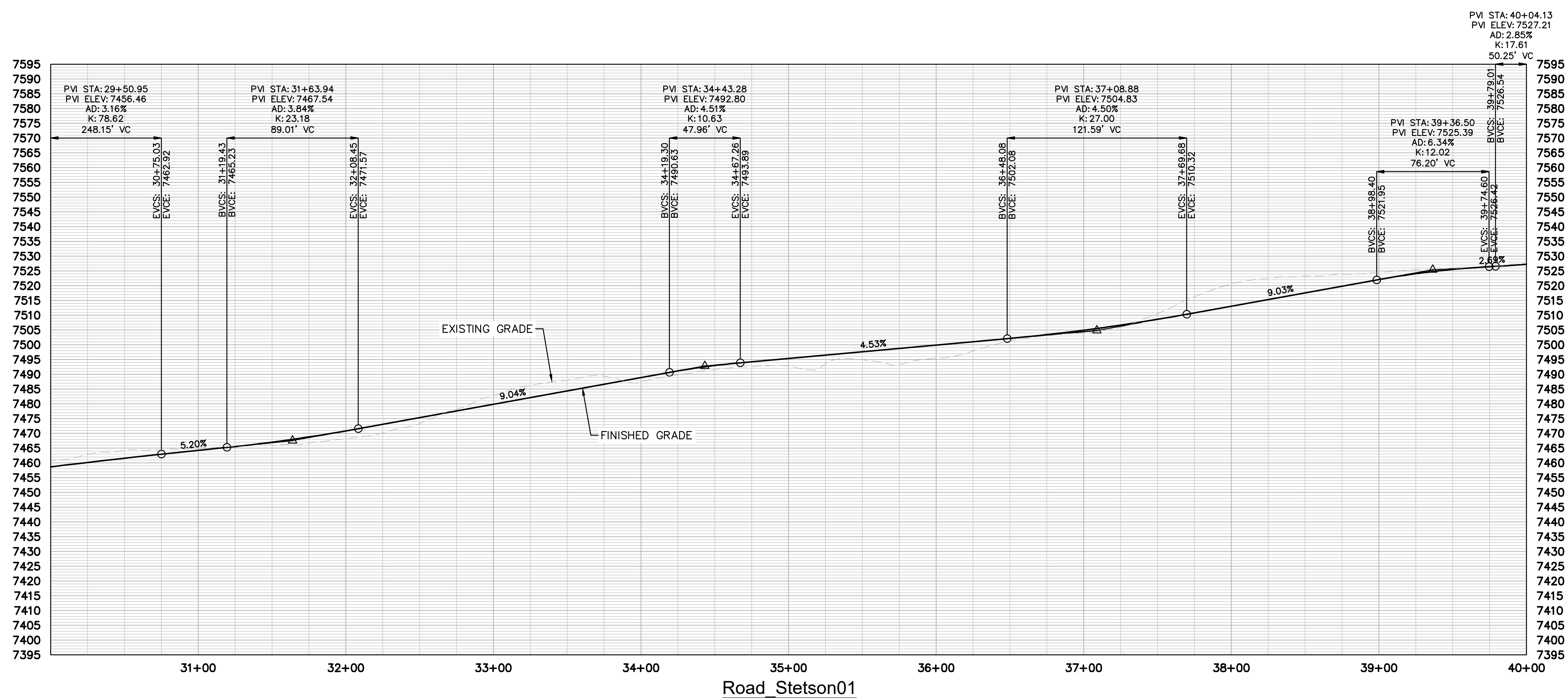


k:\cos\_civil\196778000\_stagcoach\CADD\plansheets\CDs\Stetson\Road\_Stetson01 [10+00 - 62+13.08].dwg Lundberg, Andrew 12/4/2024 1:15 PM



LEGEND

	PROPERTY LINE
	PROPOSED LOT LINE
	EXISTING MAJOR CONTOUR
	EXISTING MINOR CONTOUR
	EXISTING WATER MAIN
	EXISTING SANITARY SEWER MAIN
	EXISTING GAS MAIN
	EXISTING ELECTRIC LINE
	EXISTING STORM SEWER
	EXISTING EASEMENT
	50' WETLAND BOUNDARY
	POND LIMITS
	SANITARY SEWER
	SANITARY SEWER - LOW PRESSURE
	SANITARY SEWER - FORCE MAIN
	WATER MAIN - DISTRIBUTION
	WATERMAIN - TRANSMISSION
	COMMUNICATION LINE
	ELECRIC LINE
	SANITARY SEWER MANHOLE
	FIRE HYDRANT
	EXISTING SKI RUN
	PROPOSED SKI RUN
	EXISTING WETLAND
	PROPOSED DETENTION POND AREA
	PROPOSED BRIDGE
	PROPOSED CULVERT



NO.	REVISION	BY	DATE	APPR

**Kimley»Horn**

2024 KIMLEY-HORN AND ASSOCIATES, INC.  
2 North Nevada Avenue, Suite 900  
Colorado Springs, Colorado 80903 (719) 453-0180

DESIGNED BY: JGJ  
DRAWN BY: CAS  
CHECKED BY: EJJ  
DATE: 11/26/24

STAGECOACH MOUNTAIN RANCH  
ROUTT COUNTY, COLORADO  
PRELIMINARY CIVIL CONSTRUCTION DOCUMENTS  
ROAD\_STETSON01 [30+00 - 40+00]

PRELIMINARY  
FOR REVIEW ONLY  
NOT FOR  
CONSTRUCTION

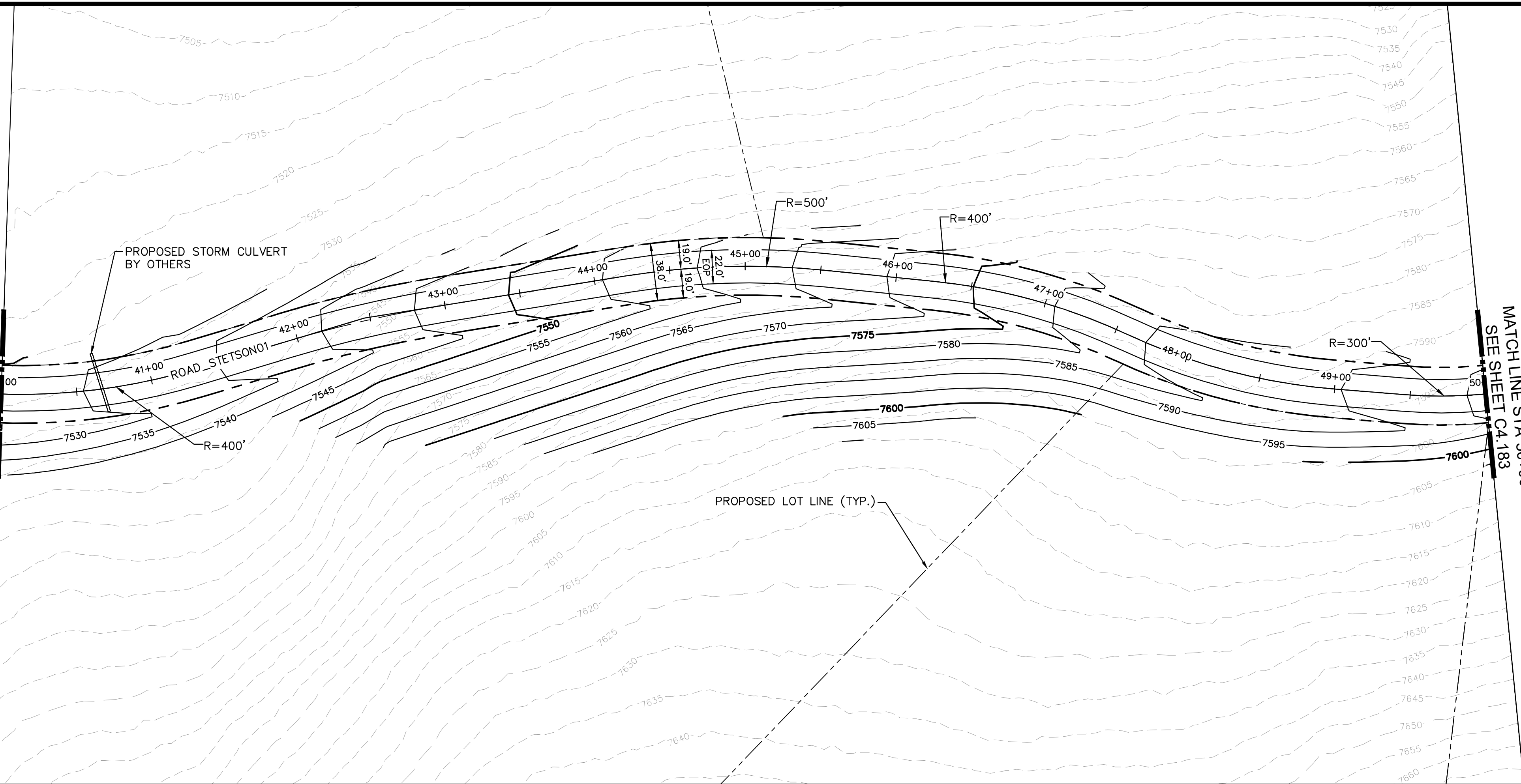
**Kimley»Horn**  
Kimley-Horn and Associates, Inc.

PROJECT NO.  
196778000

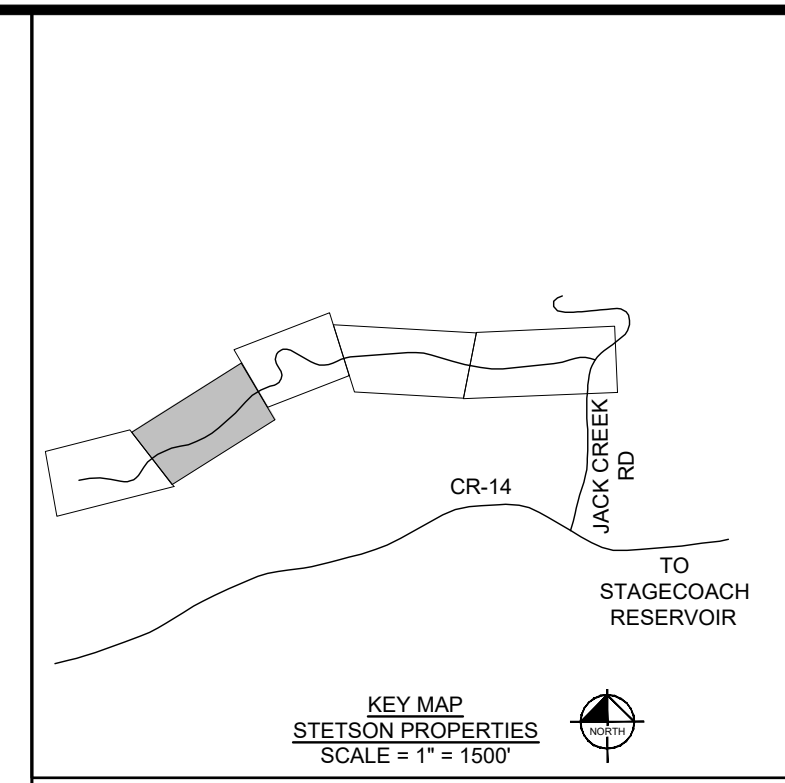
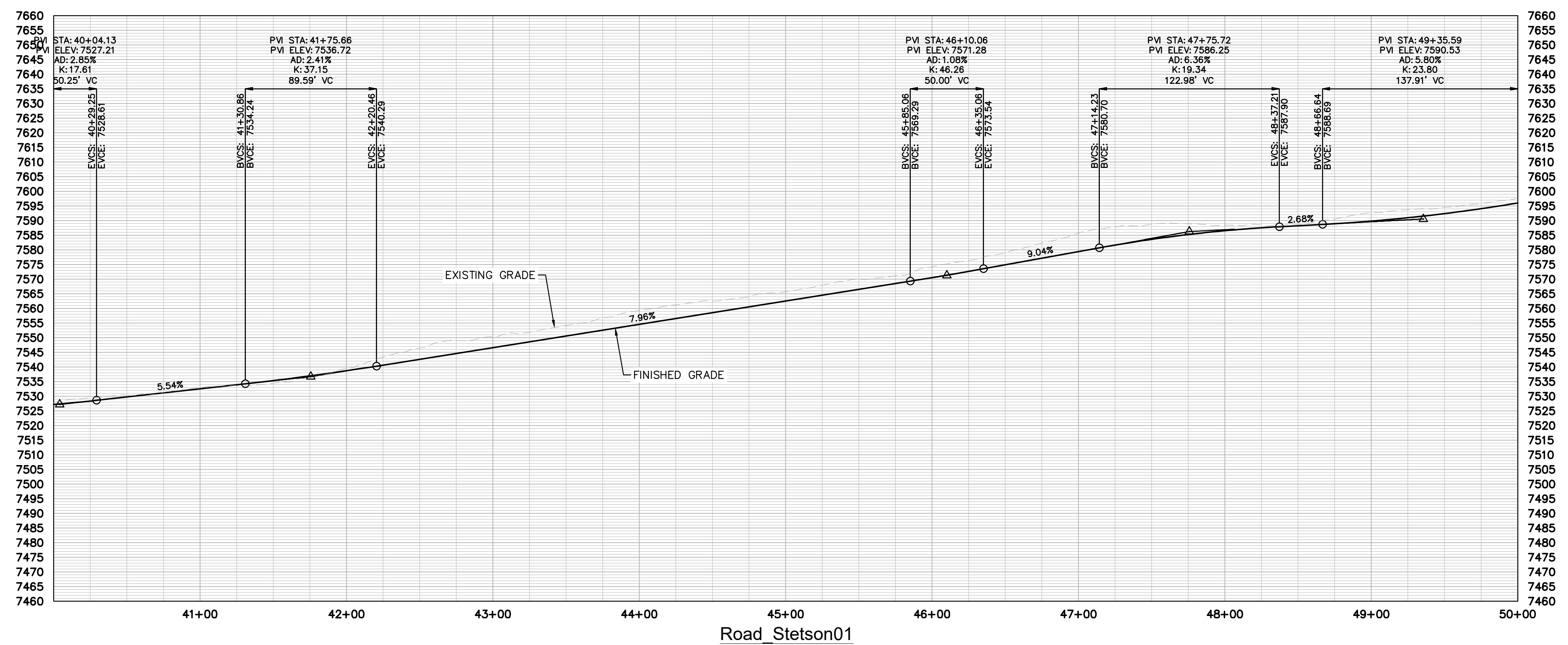
SHEET  
C4.181

k:\cos\_civil\196778000\_stagcoach\CADD\plansheets\CDs\Stetson\Road\_Stetson01 [10+00 - 62+13.08].dwg Lundberg, Andrew 12/14/2024 1:16 PM

MATCH LINE STA 40+00  
SEE SHEET C4.181

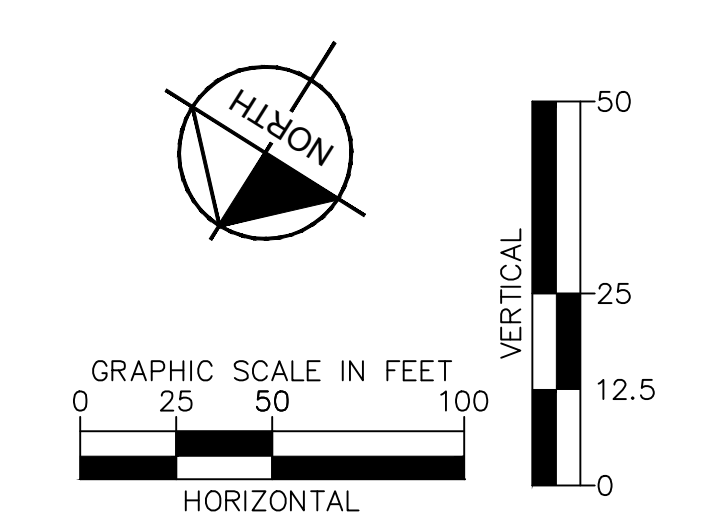


MATCH LINE STA 50+00  
SEE SHEET CA.183



**LEGEND**

	PROPERTY LINE
	PROPOSED LOT LINE
	EXISTING MAJOR CONTOUR
	EXISTING MINOR CONTOUR
	EXISTING WATER MAIN
	EXISTING SANITARY SEWER MAIN
	EXISTING GAS MAIN
	EXISTING ELECTRIC LINE
	EXISTING STORM SEWER
	EXISTING EASEMENT
	50' WETLAND BOUNDARY
	POND LIMITS
	SANITARY SEWER
	SANITARY SEWER - LOW PRESSURE
	SANITARY SEWER - FORCE MAIN
	WATER MAIN - DISTRIBUTION
	WATERMAIN - TRANSMISSION
	COMMUNICATION LINE
	ELECRIC LINE
	SANITARY SEWER MANHOLE
	FIRE HYDRANT
	EXISTING SKI RUN
	PROPOSED SKI RUN
	EXISTING WETLAND
	PROPOSED DETENTION POND AREA
	PROPOSED BRIDGE
	PROPOSED CULVERT



NO.	REVISION	BY	DATE	APPR

**Kimley»Horn**  
 2024 KIMLEY-HORN AND ASSOCIATES, INC.  
 2 North Nevada Avenue, Suite 900  
 Colorado Springs, Colorado 80903 (719) 453-0180

DESIGNED BY: JGJ  
 DRAWN BY: CAS  
 CHECKED BY: EJJ  
 DATE: 11/26/24

STAGECOACH MOUNTAIN RANCH  
 ROUTT COUNTY, COLORADO  
 PRELIMINARY CIVIL CONSTRUCTION DOCUMENTS  
 ROAD\_STETSON01 [40+00 - 50+00]

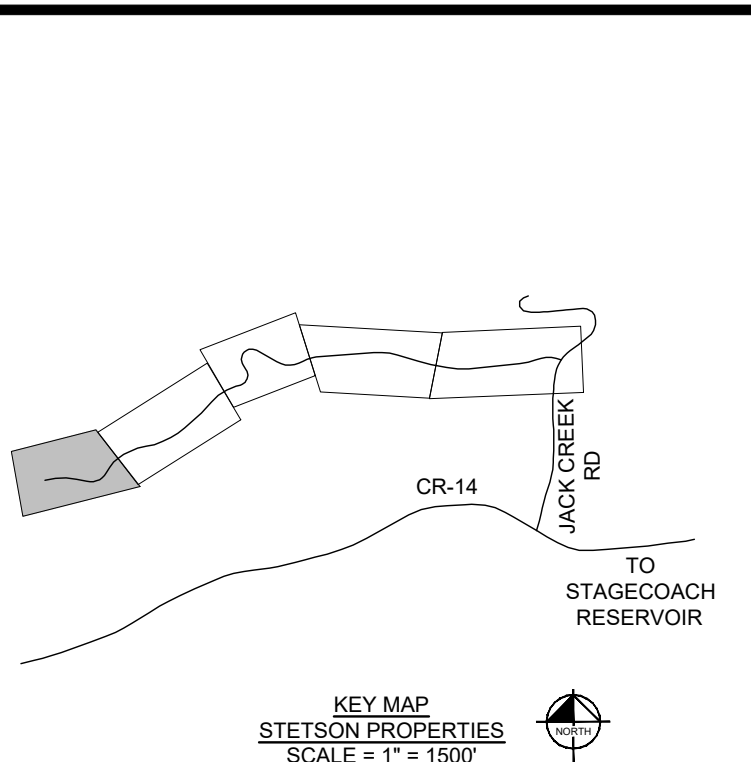
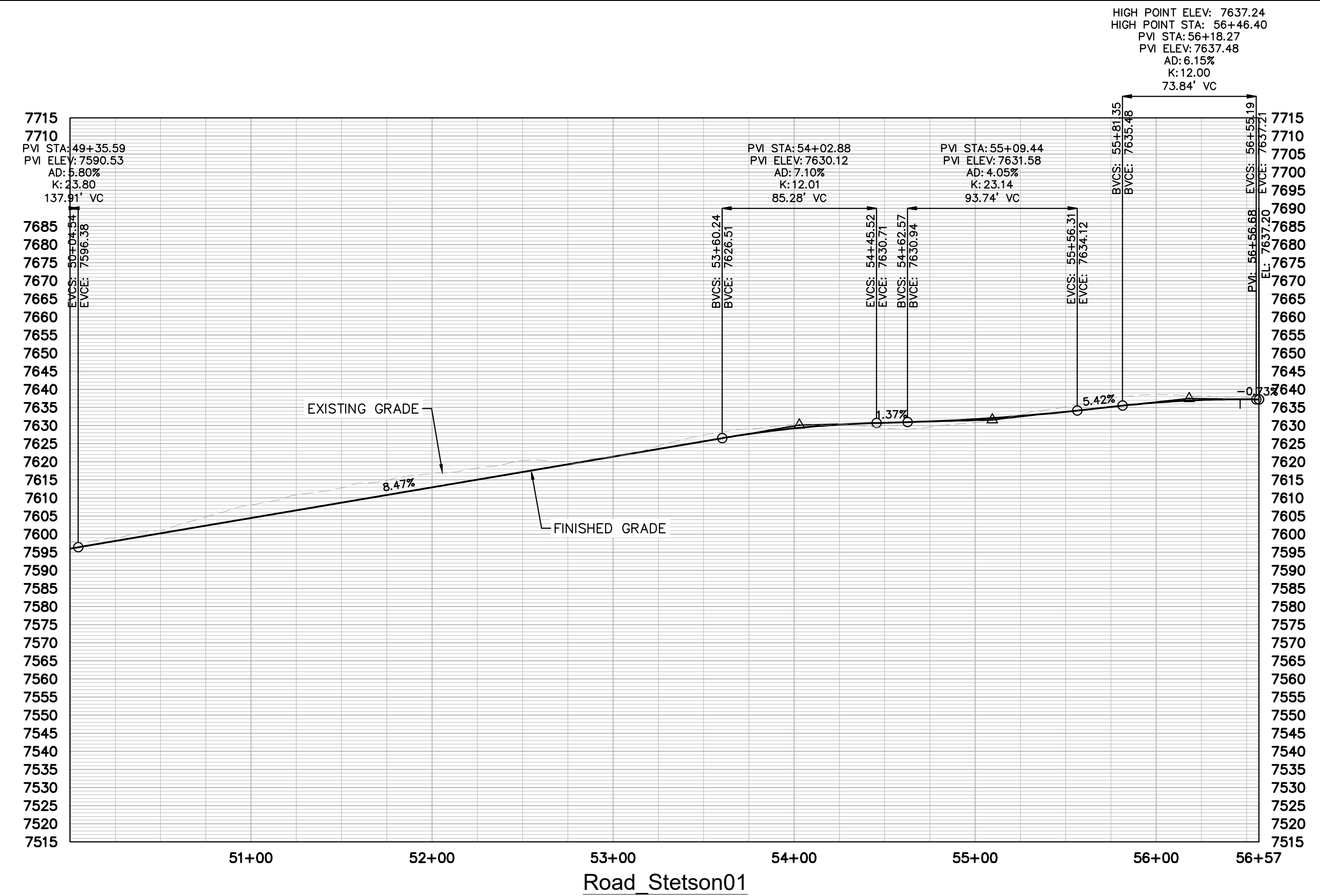
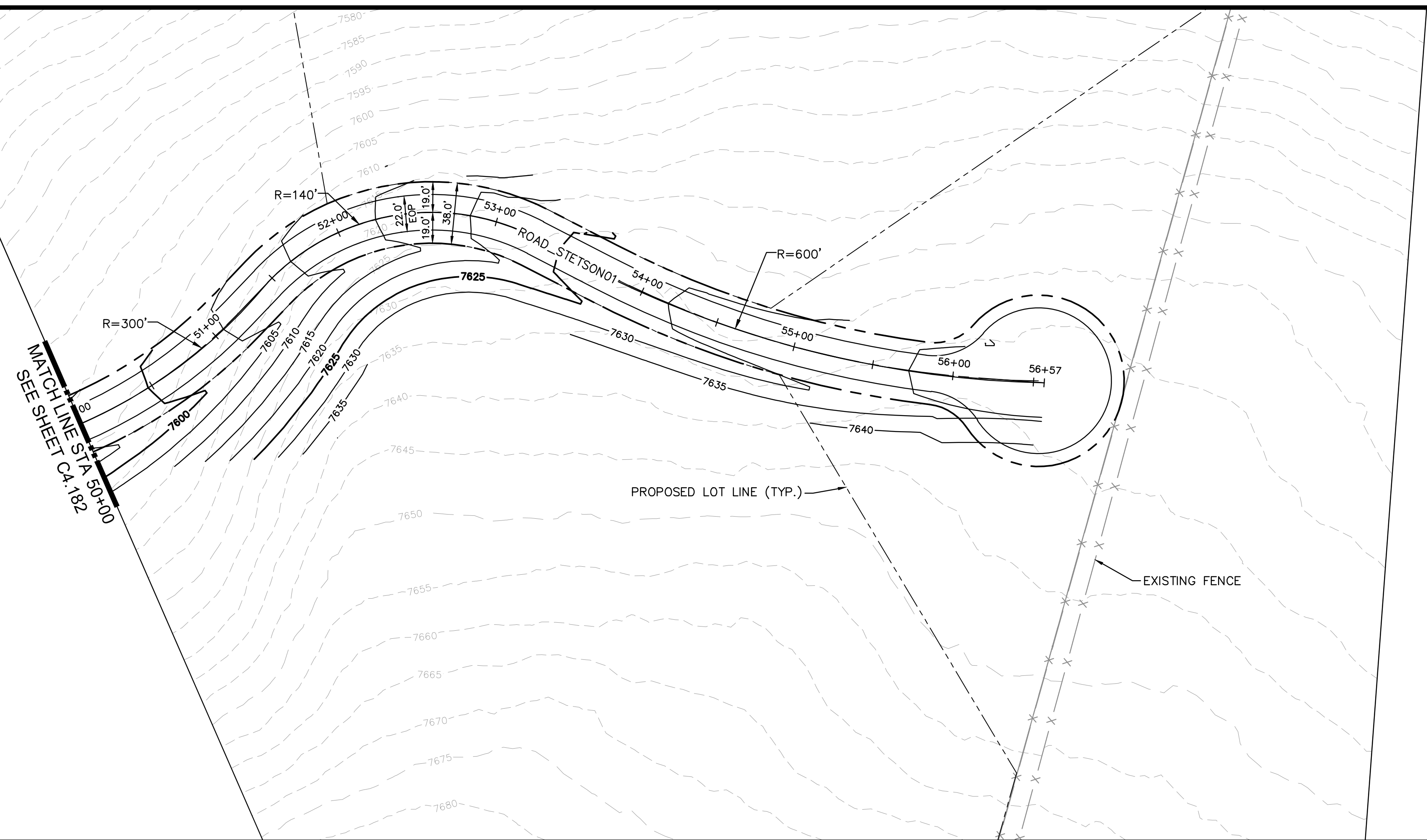
**PRELIMINARY**  
 FOR REVIEW ONLY  
 NOT FOR CONSTRUCTION

**Kimley»Horn**  
 Kimley-Horn and Associates, Inc.

PROJECT NO.  
 196778000

SHEET  
 C4.182

k:\cos\_civil\196778000\_stagecoach\CADD\plansheets\CDs\Stetson\Road\_Stetson01 [10+00 - 62+13.08].dwg Lundberg, Andrew 12/4/2024 1:17 PM



**LEGEND**

- PROPERTY LINE
- PROPOSED LOT LINE
- EXISTING MAJOR CONTOUR
- EXISTING MINOR CONTOUR
- EXISTING WATER MAIN
- EXISTING SANITARY SEWER MAIN
- EXISTING GAS MAIN
- EXISTING ELECTRIC LINE
- EXISTING STORM SEWER
- EXISTING EASEMENT
- 50' WETLAND BOUNDARY
- POND LIMITS
- SANITARY SEWER
- SANITARY SEWER - LOW PRESSURE
- SANITARY SEWER - FORCE MAIN
- WATER MAIN - DISTRIBUTION
- WATERMAIN - TRANSMISSION
- COMMUNICATION LINE
- ELECRIC LINE
- SANITARY SEWER MANHOLE
- FIRE HYDRANT
- EXISTING SKI RUN
- PROPOSED SKI RUN
- EXISTING WETLAND
- PROPOSED DETENTION POND AREA
- PROPOSED BRIDGE
- PROPOSED CULVERT



NO.	REVISION	BY	DATE	APPR

**Kimley»Horn**  
 2024 KIMLEY-HORN AND ASSOCIATES, INC.  
 2 North Nevada Avenue, Suite 900  
 Colorado Springs, Colorado 80903 (719) 453-0180

DESIGNED BY: JGJ  
 DRAWN BY: CAS  
 CHECKED BY: EJJ  
 DATE: 11/26/24

STAGECOACH MOUNTAIN RANCH  
 ROUTT COUNTY, COLORADO  
 PRELIMINARY CIVIL CONSTRUCTION DOCUMENTS  
 ROAD\_STETSON01 [50+00 - 56+56.68]

**PRELIMINARY**  
 FOR REVIEW ONLY  
 NOT FOR  
 CONSTRUCTION

**Kimley»Horn**  
 Kimley-Horn and Associates, Inc.

PROJECT NO.  
196778000

SHEET  
C4.183