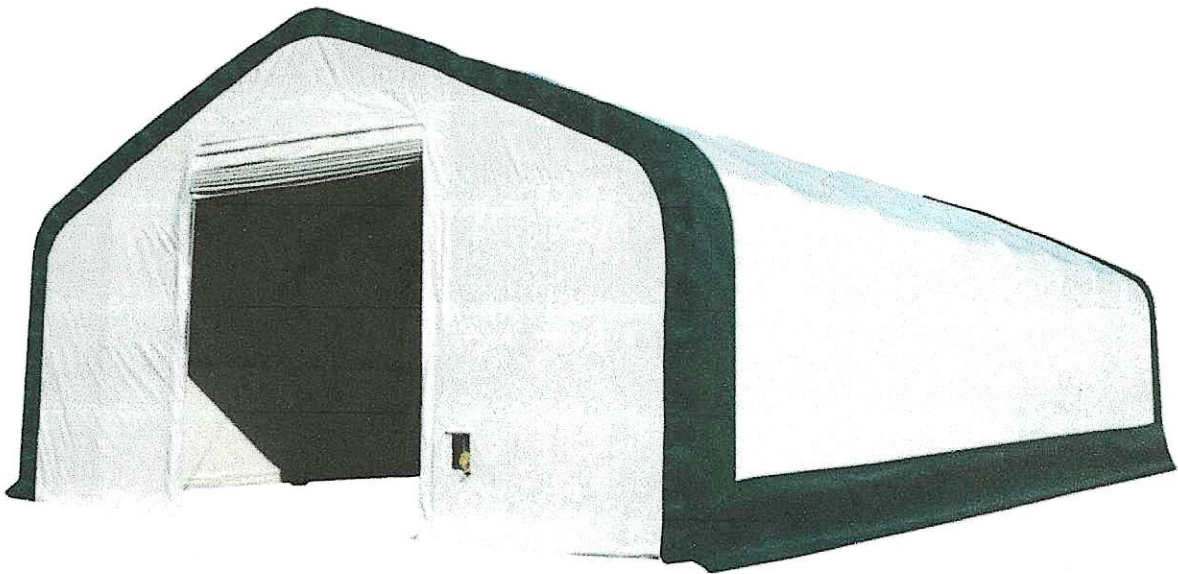


# **SHELTER**

## **ASSEMBLY MANUAL**

### **(W50H23DP SERIES)**

**Model # 5010023DP/W15.25mxL30.5mxH7.015m**



**Picture for Reference only!**

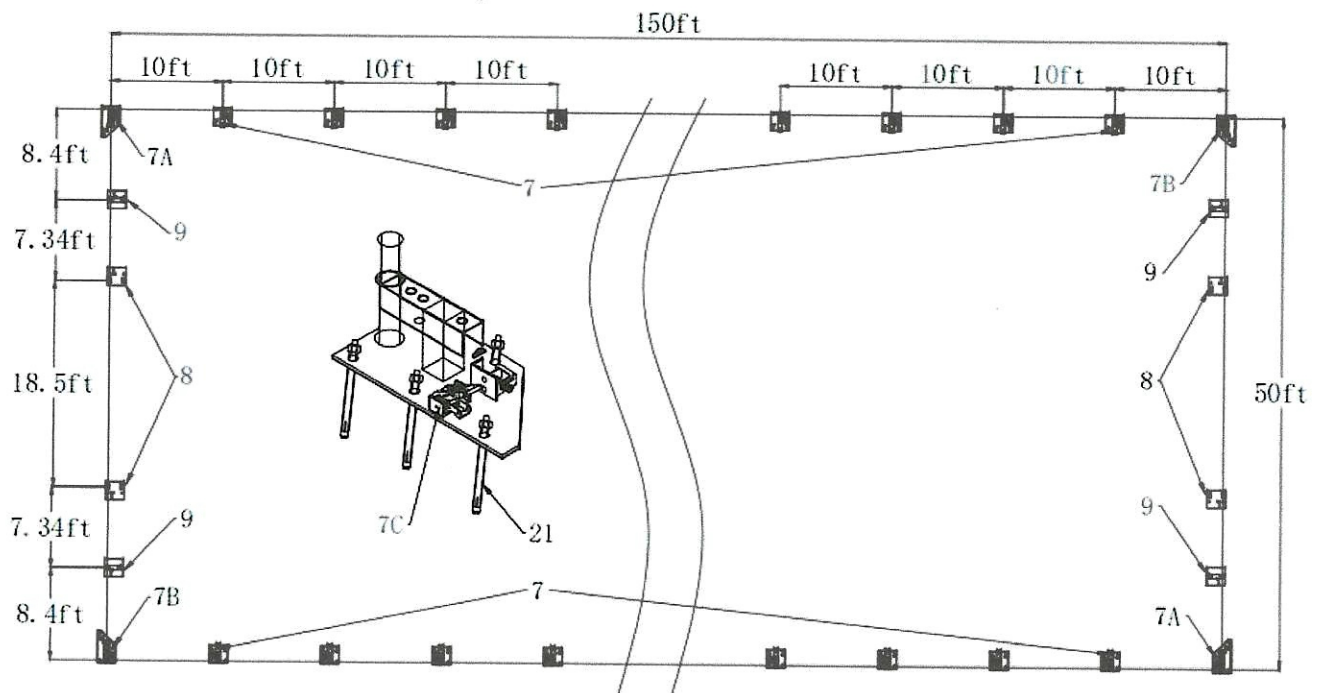
## EQUIPMENT AND TOOLS FOR INSTALLATION

- |                   |                            |
|-------------------|----------------------------|
| 1. Measuring Tape | 2. String for alignment    |
| 3. Stake          | 4. Ladder or Scissors Lift |
| 5. Sledge Hammer  | 6. Drill                   |
| 7. Wrench         | 8. Knife                   |
| 9. Hoist          |                            |

## INSTALLATION PROCESS

### A---BASE INSTALLATION

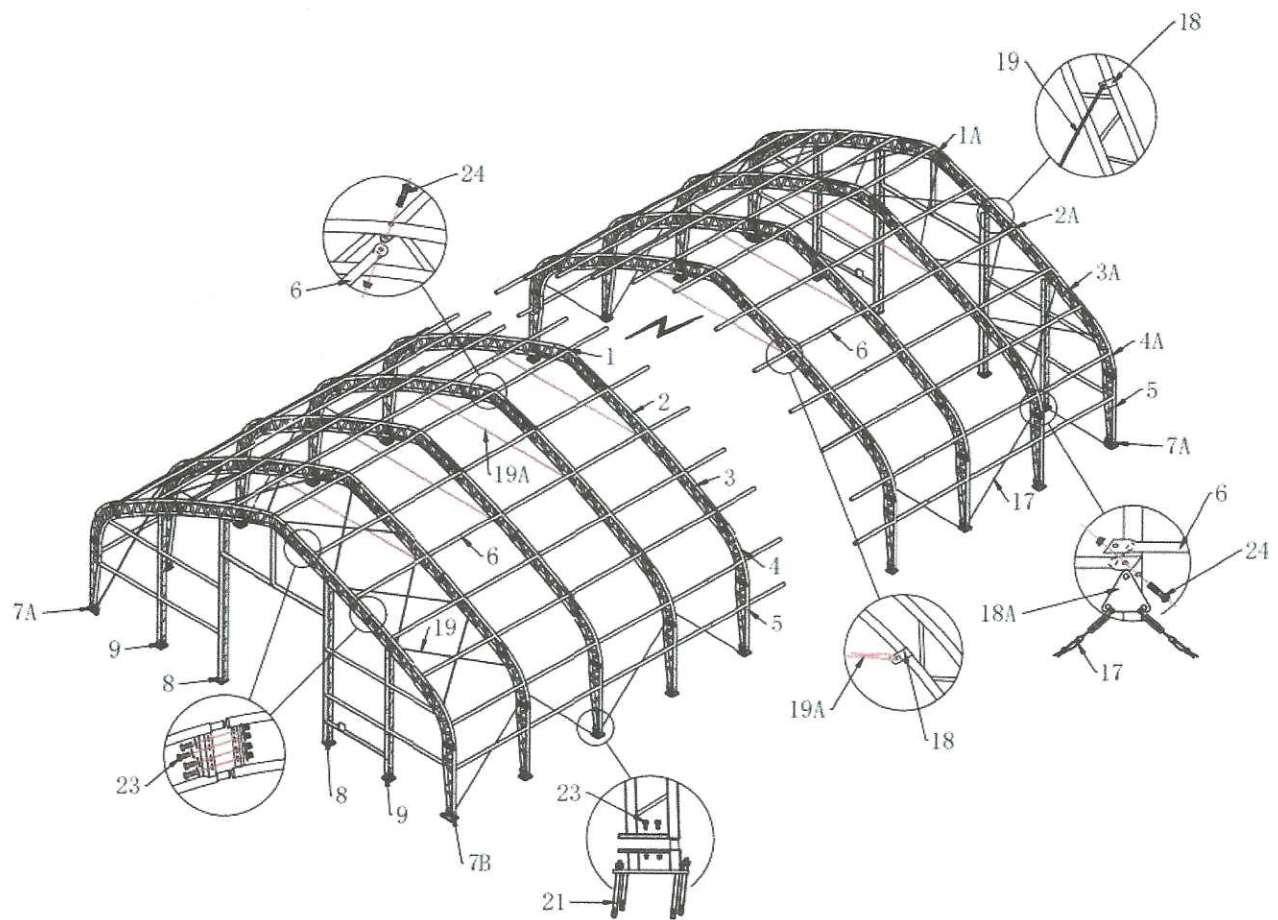
Please refer to the diagram (Figure 2) to place the base plates:



**Figure 2: Foundation placement**

1. The measure is from center to center of the tubes. Referring to the above diagram and confirm the place of the base plates. ENSURE THAT THE FOUNDATIONS IS SQUARE.
  2. As Figure 2 shows, each base plate is equipped with anchor. Mark the anchor hold through the base plate by using the anchor. Move the base plates away and the mark determines where the anchor will be.
- Note:** The stake peg apply for normal conditions, not suitable to the rock ground, frozen soil and concrete ground. Please use anchors if the building will be assembled on the concrete.

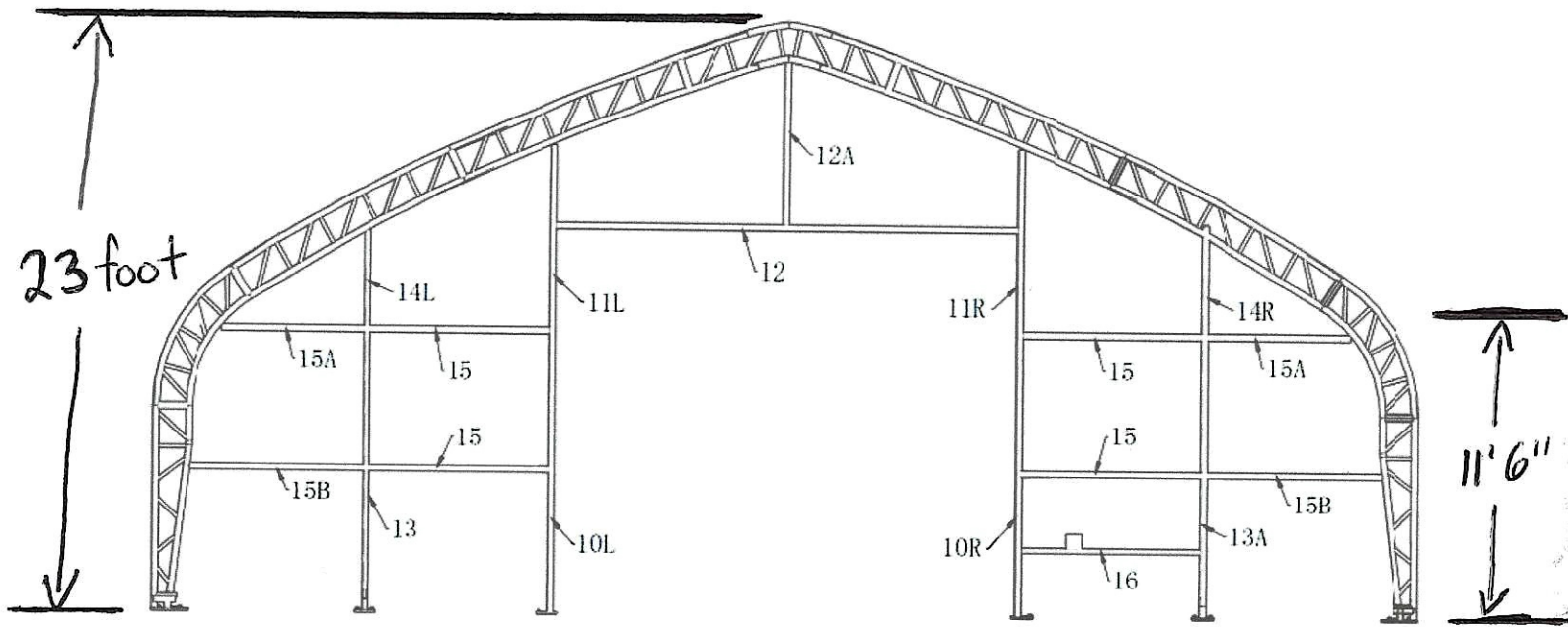
30	Tension band	12
32	Bolt M10*30mm	24
33	Small ratchet with belt	140



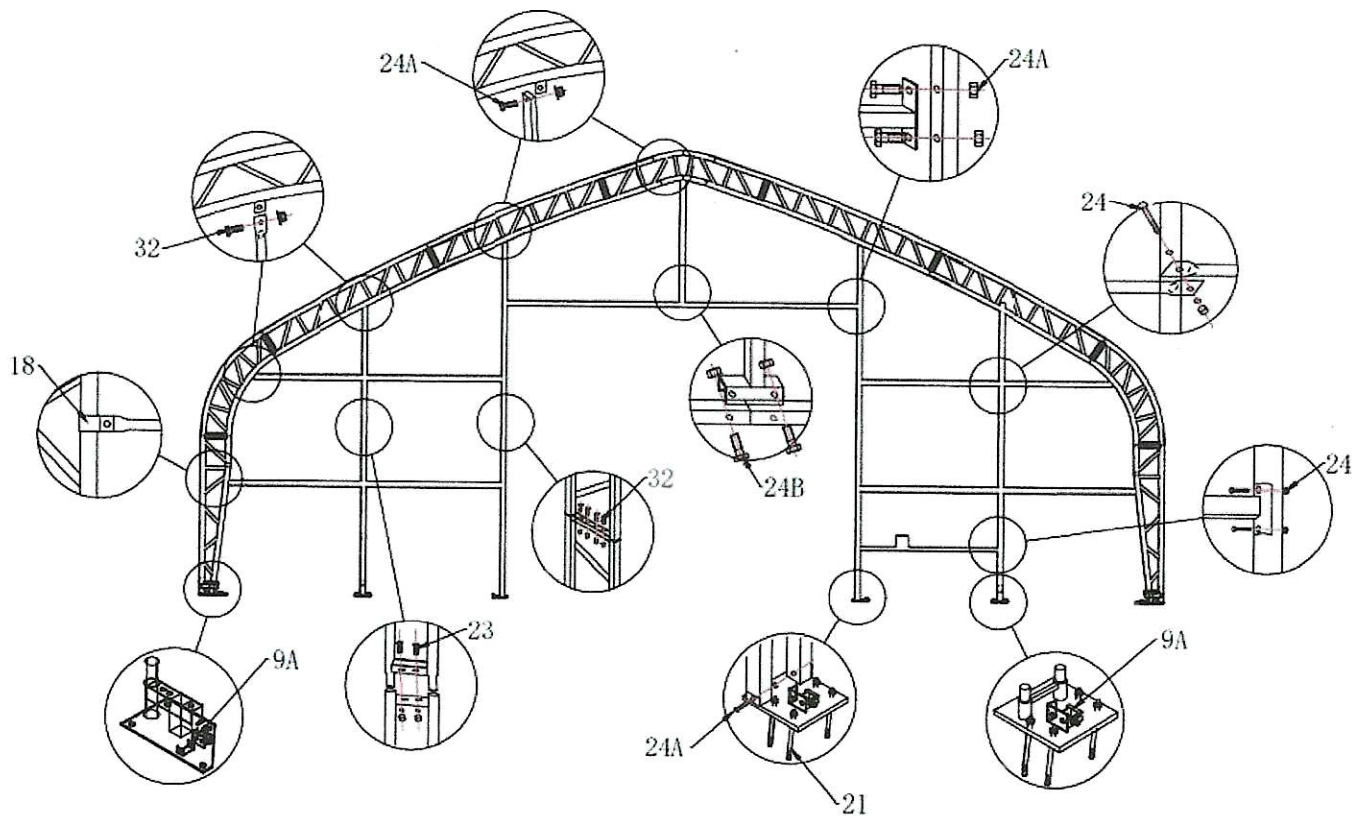
**Figure 1: Frame Sketch**



## C--- INSTALLING FRONT AND BACK DOORS AND COVERS



**Figure 7**



**Figure 8**

1. After assemble the arches, please assemble the front and back door frames as the picture (Figure 7&8) shown above.