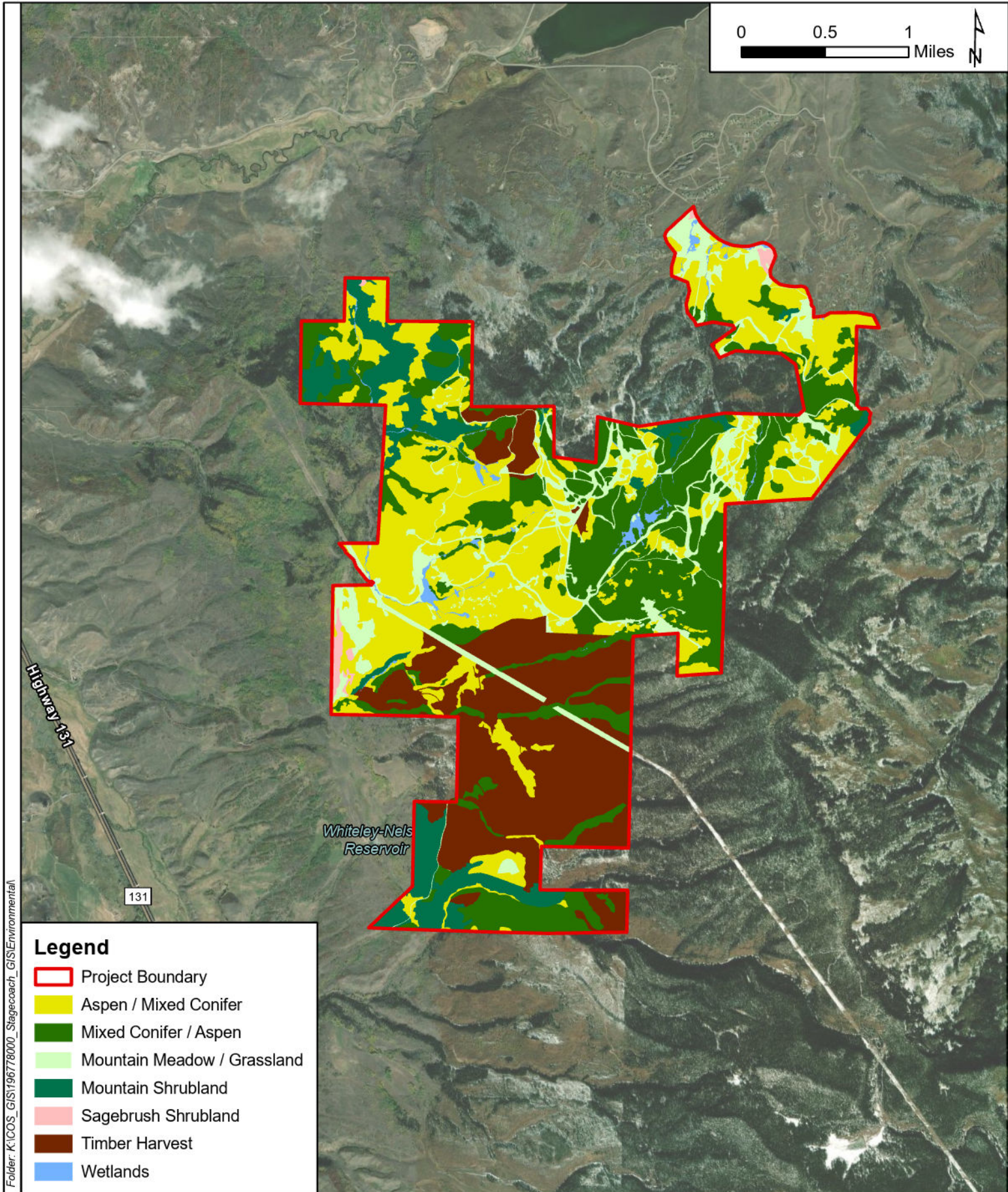


# **ATTACHMENT M**

## **COMBINED WILDLIFE MAP SET**



Folder: K:\COS\_GIS\196778000\_Stagecoach\_GIS\Environmental

**Legend**

- Project Boundary
- Aspen / Mixed Conifer
- Mixed Conifer / Aspen
- Mountain Meadow / Grassland
- Mountain Shrubland
- Sagebrush Shrubland
- Timber Harvest
- Wetlands

**Kimley»Horn**

© 2024 Kimley-Horn and Associates, Inc.  
 2 N Nevada Ave, Ste 900, Colorado Springs, CO  
 Phone (719) 453-0180  
[www.kimley-horn.com](http://www.kimley-horn.com)

**Field Delineated Habitat Types Map**

**Stagecoach Mountain Ranch  
 Stagecoach, Routt County, Colorado**

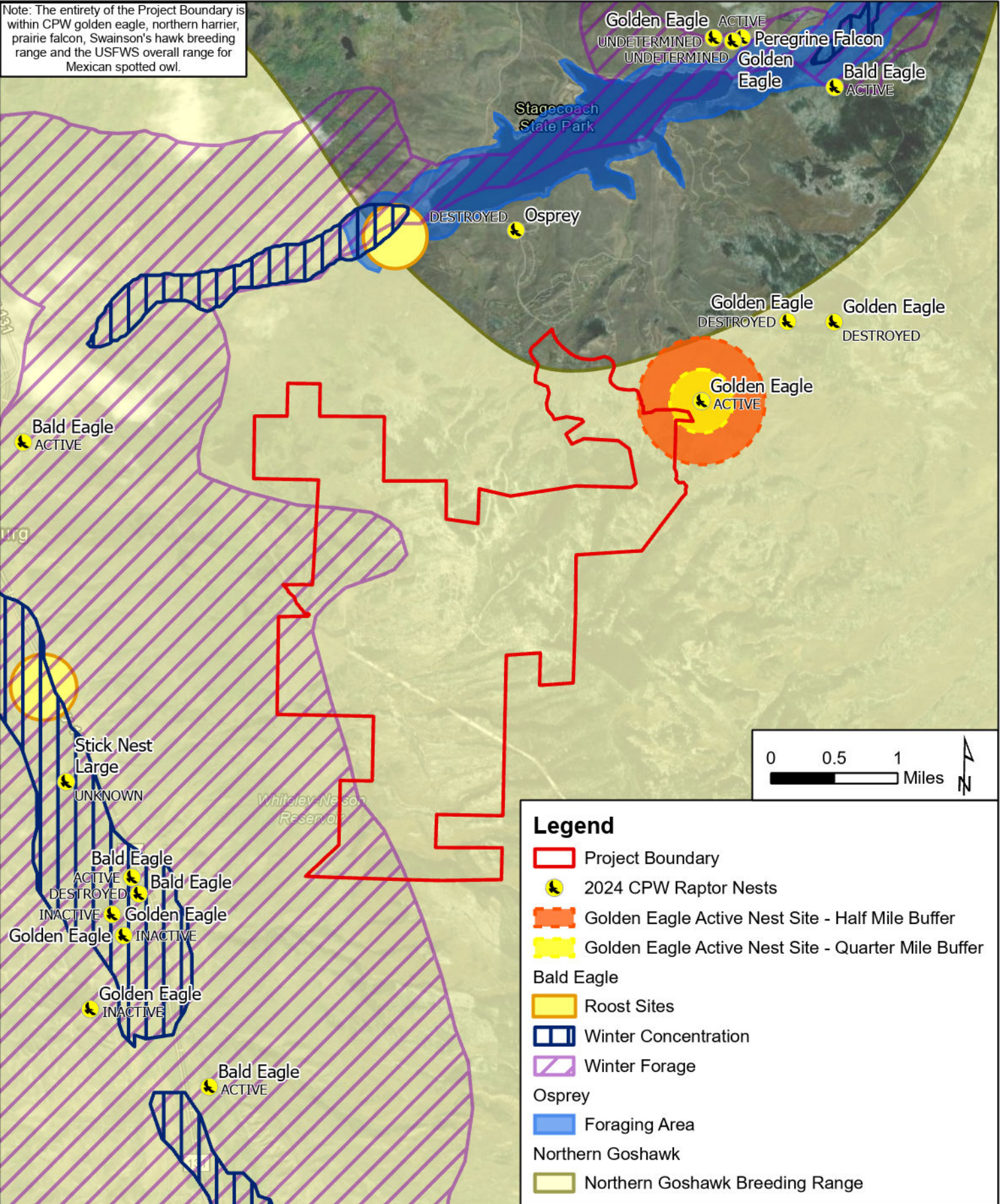
1.5 IN = 1 MI

PROJECT NUMBER: 19678000

DECEMBER 2024



Note: The entirety of the Project Boundary is within CPW golden eagle, northern harrier, prairie falcon, Swainson's hawk breeding range and the USFWS overall range for Mexican spotted owl.



Folder: K:\COS\_GIS\19678000\_Stagecoach\_GIS\Environmental

**Kimley»Horn**

© 2024 Kimley-Horn and Associates, Inc.  
2 N Nevada Ave, Ste 900, Colorado Springs, CO  
Phone (719) 453-0180  
www.kimley-horn.com

### Raptor Activity Map

**Stagecoach Mountain Ranch  
Stagecoach, Routt County, Colorado**

1 IN = 1 MI

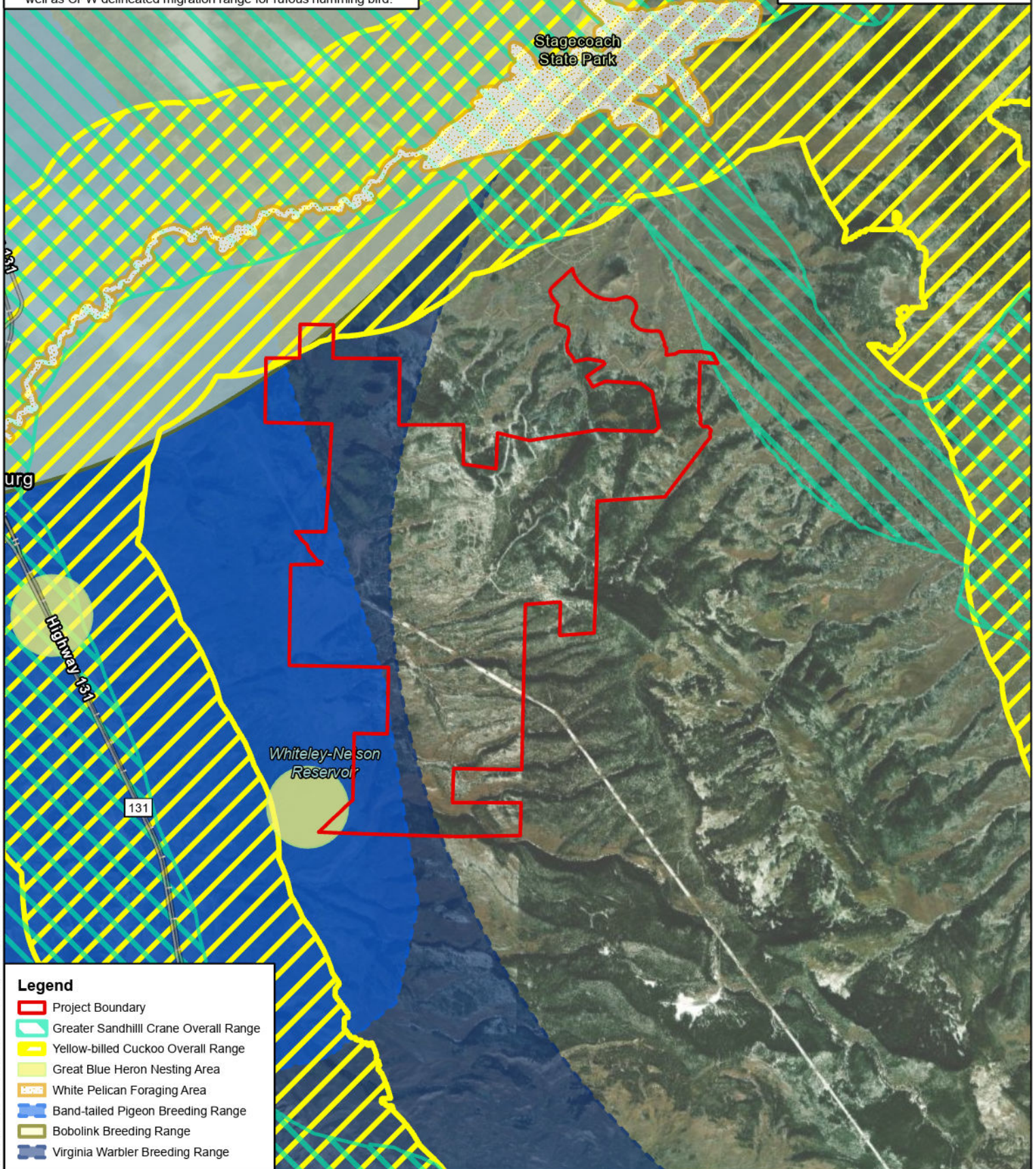
PROJECT NUMBER: 19678000

DECEMBER 2024



Note: The entirety of the Project Boundary is within CPW delineated breeding range for Brewer's sparrow, Cassin's finch, lazuli bunting, olive-sided flycatcher and veery. The entirety of the Project Boundary is also within CPW delineated overall range for brown-capped rosy finch, as well as CPW delineated migration range for rufous humming bird.

0 0.5 1 Miles



#### Legend

- ▬ Project Boundary
- ▬ Greater Sandhill Crane Overall Range
- ▬ Yellow-billed Cuckoo Overall Range
- ▬ Great Blue Heron Nesting Area
- ▬ White Pelican Foraging Area
- ▬ Band-tailed Pigeon Breeding Range
- ▬ Bobolink Breeding Range
- ▬ Virginia Warbler Breeding Range

**Kimley»Horn**

© 2024 Kimley-Horn and Associates, Inc.  
2 N Nevada Ave, Ste 900, Colorado Springs, CO  
Phone (719) 453-0180  
www.kimley-horn.com

#### Non-Raptor Avian Species Activity Map

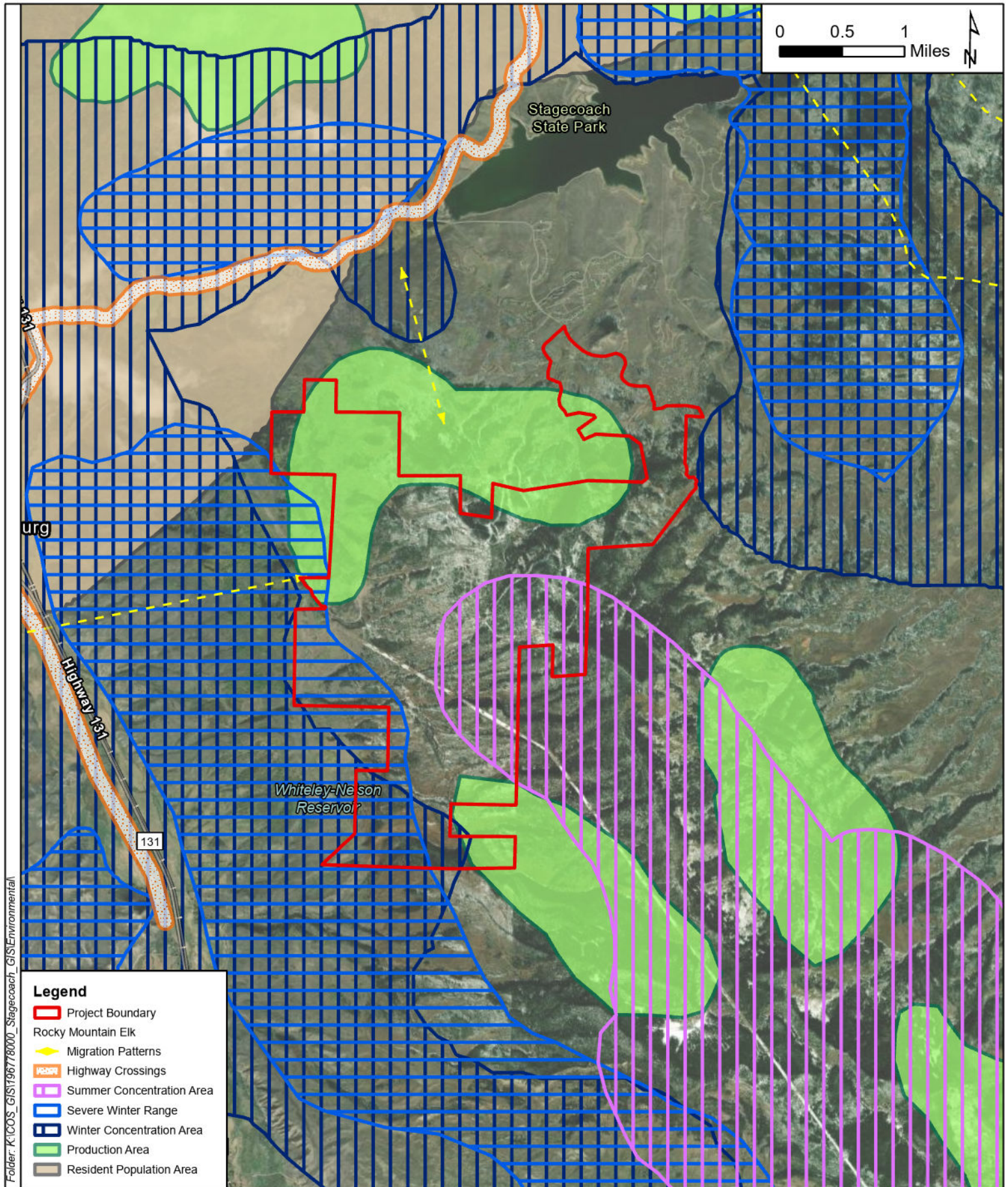
**Stagecoach Mountain Ranch  
Stagecoach, Routt County, Colorado**

1 IN = 1 MI

PROJECT NUMBER: 19678000

DECEMBER 2024





Folder: K:\COS\_GIS\196778000\_Stagecoach\_GIS\Environmental

- Legend**
- Project Boundary
  - Rocky Mountain Elk
  - Migration Patterns
  - Highway Crossings
  - Summer Concentration Area
  - Severe Winter Range
  - Winter Concentration Area
  - Production Area
  - Resident Population Area

**Kimley»Horn**

© 2024 Kimley-Horn and Associates, Inc.  
 2 N Nevada Ave, Ste 900, Colorado Springs, CO  
 Phone (719) 453-0180  
[www.kimley-horn.com](http://www.kimley-horn.com)

**Rocky Mountain Elk Activity Map**

**Stagecoach Mountain Ranch  
 Stagecoach, Routt County, Colorado**

1 IN = 1 MI

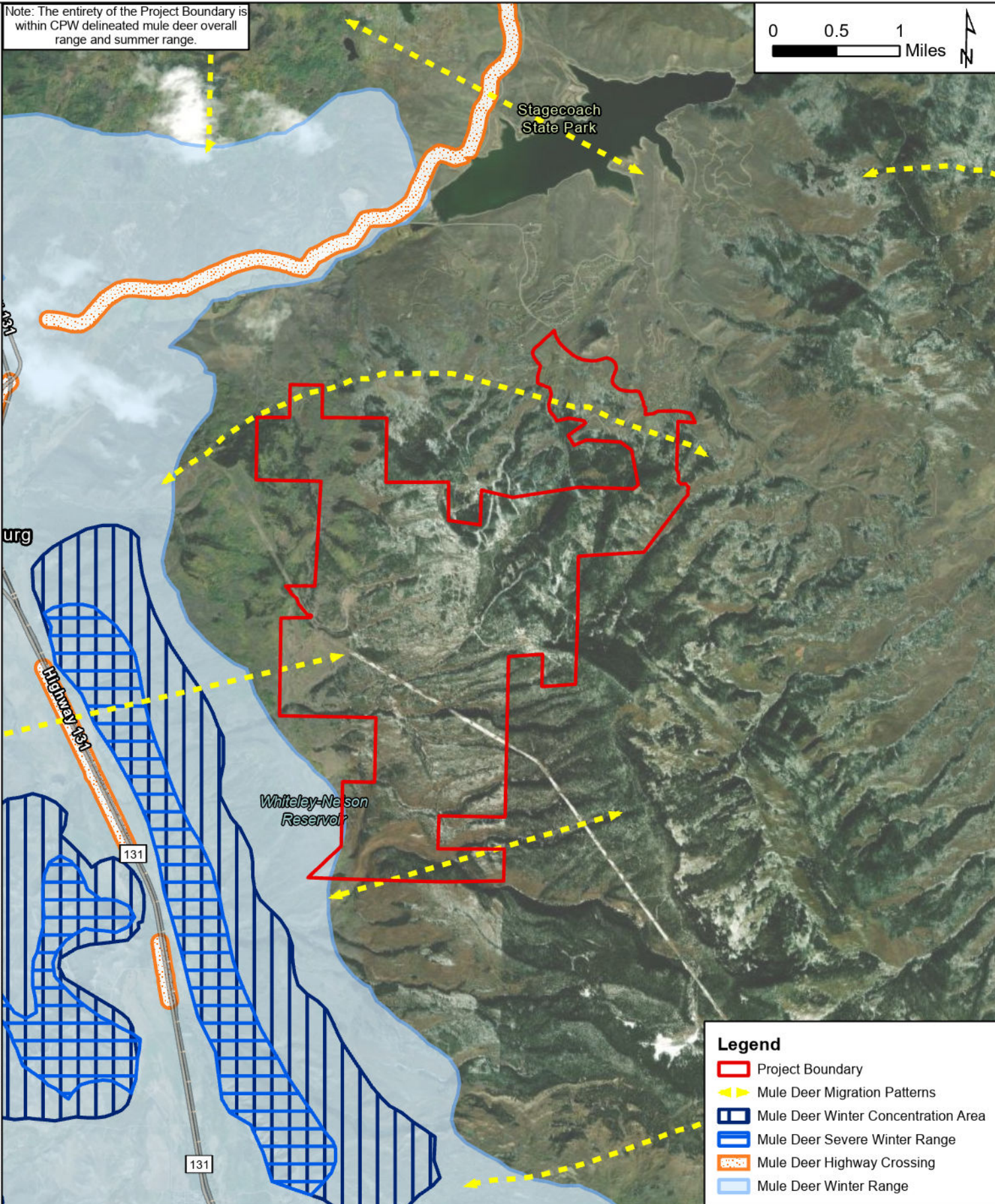
PROJECT NUMBER: 19678000

DECEMBER 2024



Note: The entirety of the Project Boundary is within CPW delineated mule deer overall range and summer range.

0 0.5 1 Miles



Folder: K:\COS\_GIS\19678000\_Stagecoach\_GIS\Environmental

**Kimley»Horn**

© 2024 Kimley-Horn and Associates, Inc.  
2 N Nevada Ave, Ste 900, Colorado Springs, CO  
Phone (719) 453-0180  
www.kimley-horn.com

### Mule Deer Activity Map

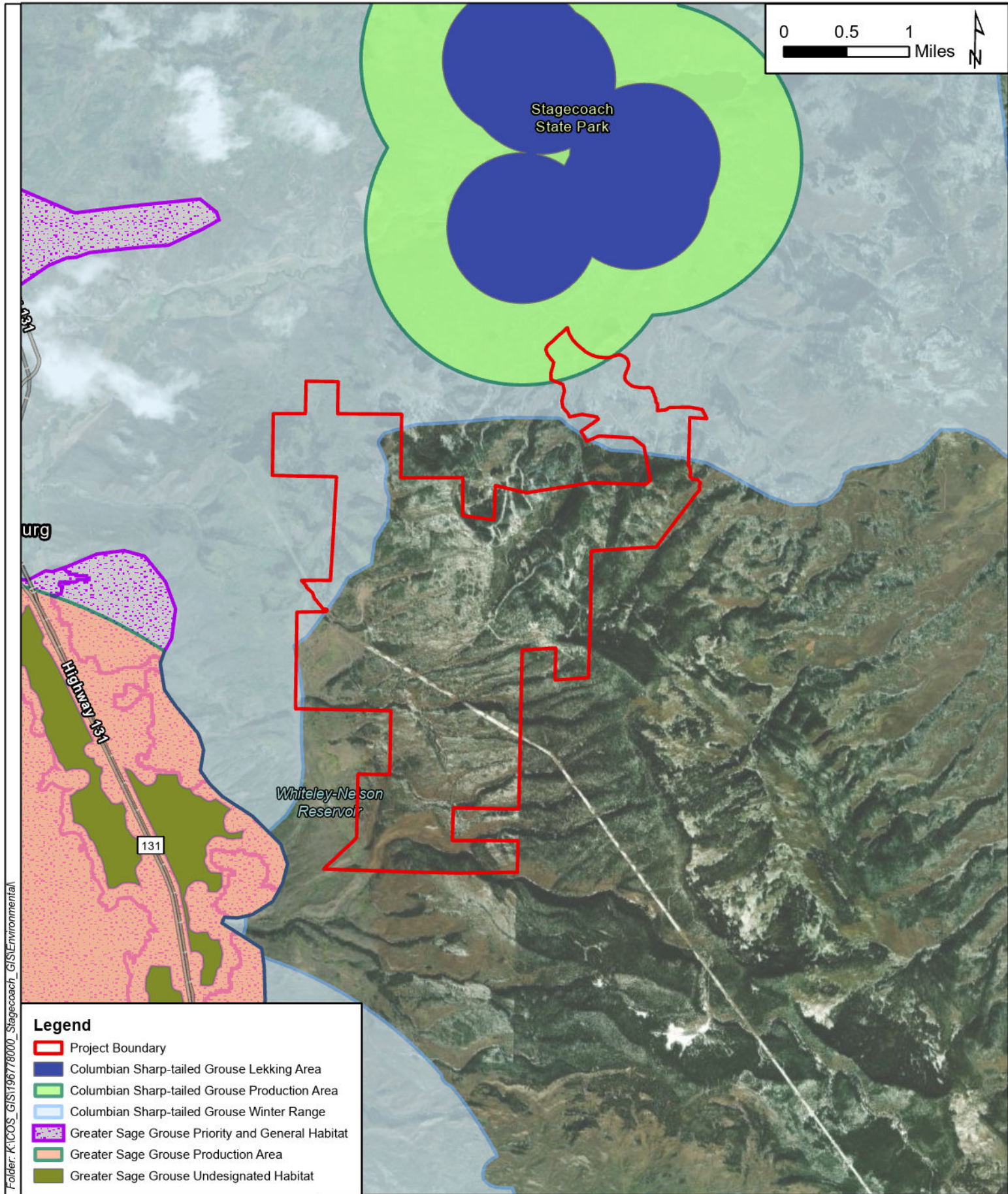
**Stagecoach Mountain Ranch  
Stagecoach, Routt County, Colorado**

1 IN = 1 MI

PROJECT NUMBER: 19678000

DECEMBER 2024





Folder: K:\C0S\_GIS\196778000\_Stagecoach\_GIS\Environmental

**Legend**

- Project Boundary
- Columbian Sharp-tailed Grouse Lekking Area
- Columbian Sharp-tailed Grouse Production Area
- Columbian Sharp-tailed Grouse Winter Range
- Greater Sage Grouse Priority and General Habitat
- Greater Sage Grouse Production Area
- Greater Sage Grouse Undesignated Habitat

**Kimley»Horn**

© 2024 Kimley-Horn and Associates, Inc.  
2 N Nevada Ave, Ste 900, Colorado Springs, CO  
Phone (719) 453-0180  
www.kimley-horn.com

**Grouse Activity Map**

**Stagecoach Mountain Ranch  
Stagecoach, Routt County, Colorado**

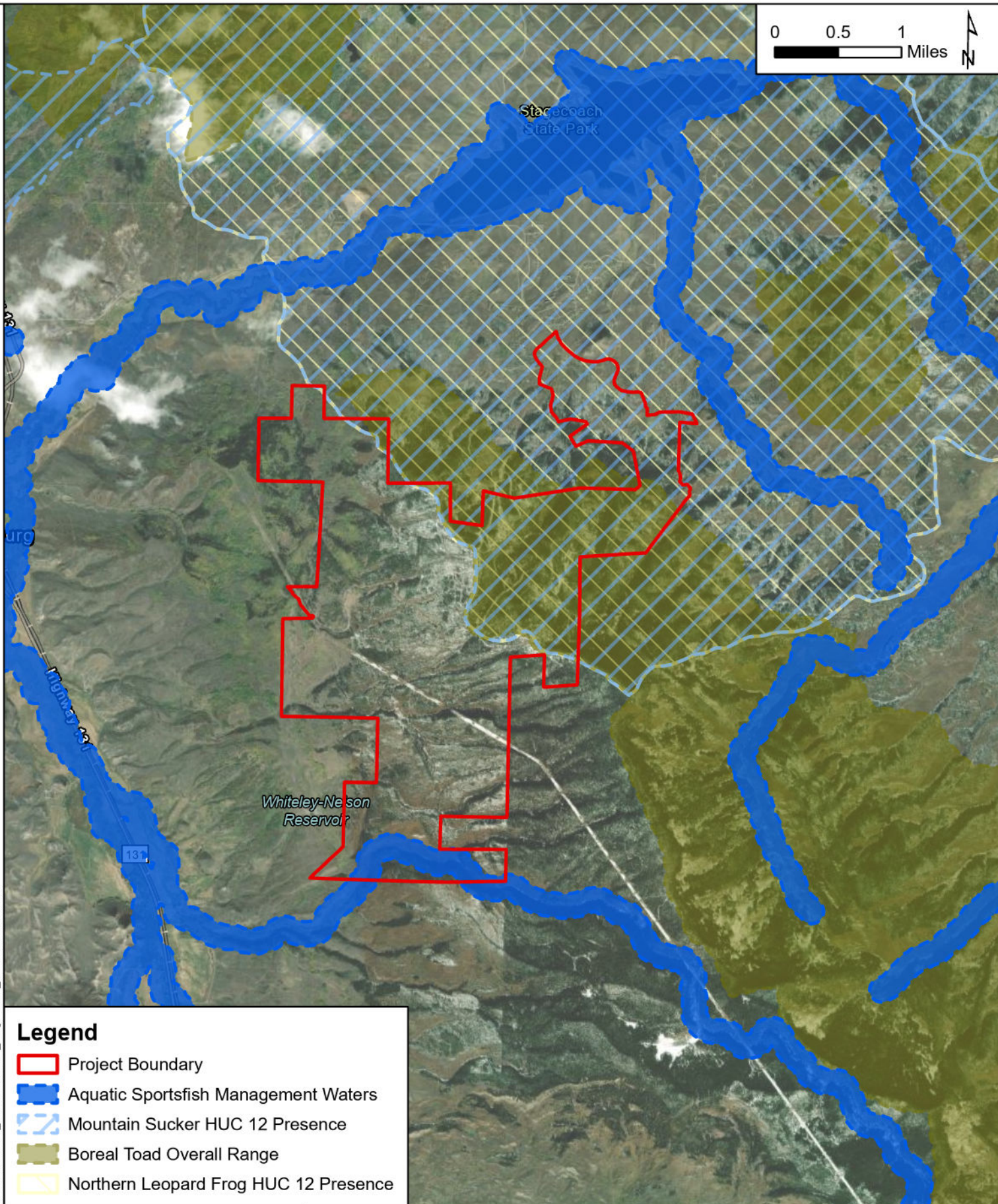
1 IN = 1 MI

PROJECT NUMBER: 19678000

DECEMBER 2024



Folder: K:\COS\_GIS\19678000\_Stagecoach\_GIS\Environmental



### Legend

- Project Boundary
- Aquatic Sportsfish Management Waters
- Mountain Sucker HUC 12 Presence
- Boreal Toad Overall Range
- Northern Leopard Frog HUC 12 Presence

**Kimley»Horn**

© 2024 Kimley-Horn and Associates, Inc.  
2 N Nevada Ave, Ste 900, Colorado Springs, CO  
Phone (719) 453-0180  
[www.kimley-horn.com](http://www.kimley-horn.com)

### Aquatic Species Activity Map

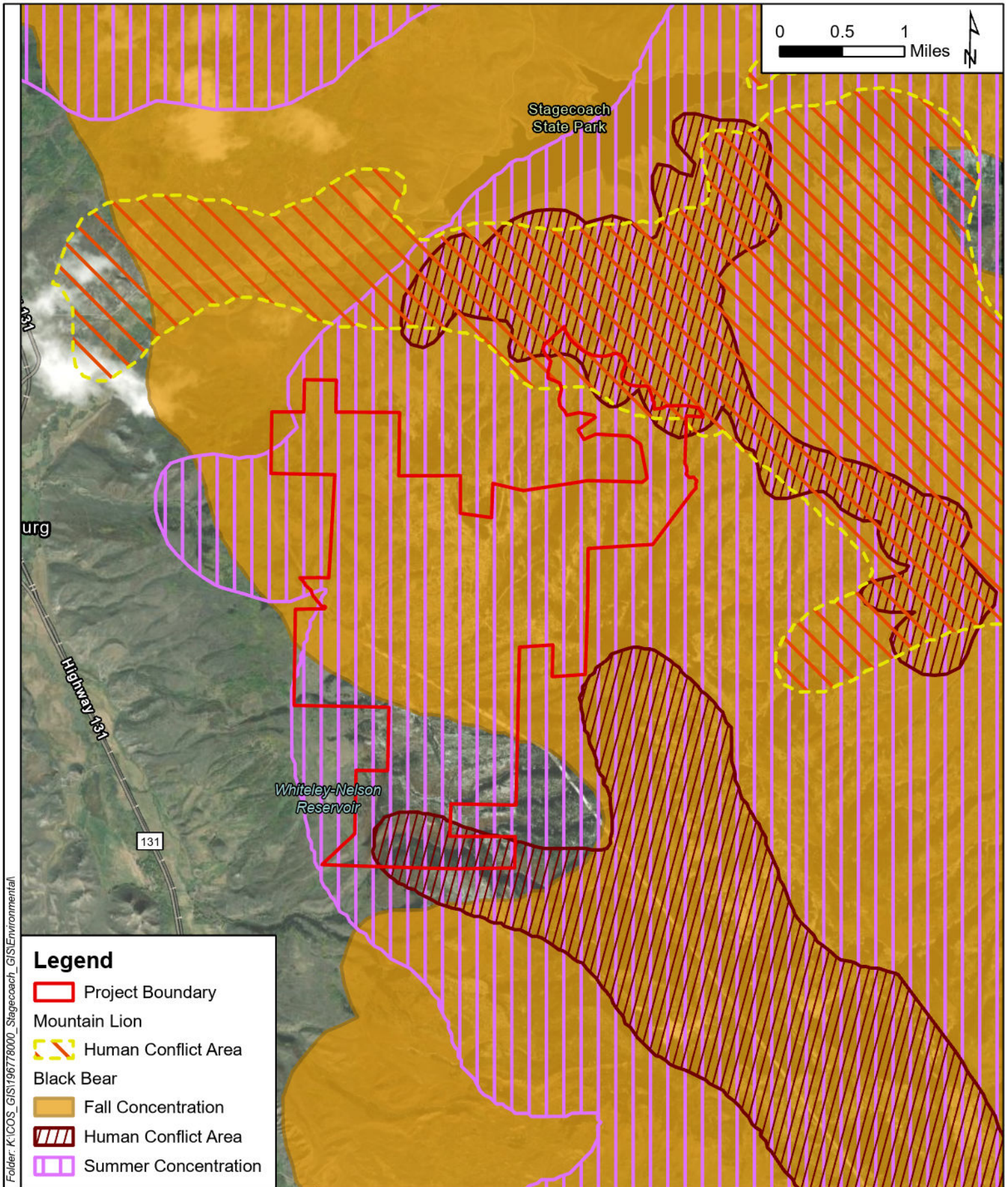
**Stagecoach Mountain Ranch  
Stagecoach, Routt County, Colorado**

1 IN = 1 MI

PROJECT NUMBER: 19678000

DECEMBER 2024





Folder: K:\COS\_GIS\196778000\_Stagecoach\_GIS\Environmental