

ATTACHMENT Q
CULTURAL AND
PALEONTOLOGICAL
ASSESSMENT



Cultural and Paleontological Assessment

**Stagecoach Mountain Ranch Project
Routt County, Colorado**

January 2025

Kimley»Horn

© Kimley-Horn & Associates, Inc.
2 N. Nevada Ave, Suite 900
Colorado Springs, CO

Prepared for:



Routt County, Colorado

Table of Contents

1.0 Executive Summary 1

2.0 Introduction 2

3.0 Regulatory Constraints 2

4.0 Methodology 3

5.0 Results of Cultural Resource Review 4

6.0 Results of Paleontological Resource Review 6

7.0 Impact Analysis and Conclusion 7

8.0 Certification of Results 8

9.0 Attachments..... 8

10.0 References 9

1.0 Executive Summary

Kimley-Horn and Associates, Inc. (“Kimley-Horn”) was contracted to complete a Cultural and Paleontological Assessment for the approximately 5,059-acre Stagecoach Mountain Ranch (“SMR”) development (“project”) located in Routt County, Colorado. The project requires a 1041 permit in Routt County, and therefore, Kimley-Horn completed the assessment pursuant to applicable Routt County regulations. The purpose of this Cultural and Paleontological Assessment is to identify any known or potential historical, archaeological, and/or paleontological resources in the project area and identify the potential impacts and net effects on any present resources as a result of the proposed project.

Kimley-Horn conducted a Class I cultural resource file search, paleontological record search, scholarly literature review, database review, and land use research for the entire SMR project area. Kimley-Horn identified one previously recorded historical resource and two unrecorded historical resources during the efforts conducted for this assessment. The previously recorded resource, 5RT.3485.1, is a segment of a historic-era road known as County Road 12. The two unrecorded resources were assigned temporary resource numbers KHA-SMR-01 and -02 and were identified during a review of historic topographic maps and images. KHA-SMR-01 consists of a historic-era water reservoir, while KHA-SMR-02 consists of the demolished foundations of four historic-era buildings and ancillary structures. Kimley-Horn staff did not identify any previously recorded paleontological resources or archaeological resources in the project area. However, staff determined that the project area has a high sensitivity for subsurface paleontological resources and moderate sensitivity for historic-era archaeological sites. Most of the project area has not been surveyed.

Kimley-Horn staff conducted an impact analysis and identified known impacts to 5RT.3485.1 and KHA-SMR-02 due to the currently proposed project design. Kimley-Horn did not identify any known archaeological or paleontological resources in the project area or impacts to KHA-SMR-01. Additional effort related to the inventory, evaluation, and/or treatment of historical, archaeological, and/or paleontological resources is not anticipated, because the project occurs on private land, and there is no known state or federal nexus to the project. Should a state or federal nexus to the project exist in the future, additional work may be required. Kimley-Horn recommends the following measures to address any potential impacts to historical, archaeological, and/or paleontological resources that may be present in the project area and identified during construction:

- Should any inadvertent discovery of cultural resources occur during construction, the developer will halt ground disturbing activities in a 20-foot radius until a State of Colorado permitted archaeologist can evaluate the discovery and make further recommendations.
- Should any inadvertent discovery of paleontological resources occur during construction, the developer will halt ground disturbing activities in a 20-foot radius until a State of Colorado permitted paleontologist can evaluate the discovery and make further recommendations.
- During project development, the historic and cultural resource policies outlined in the Routt County Master Plan should be recognized and implemented to address any potential impacts to archaeological and/or paleontological resources.

2.0 Introduction

This Cultural and Paleontological Assessment presents the results of the research and record searches for the approximately 5,059-acre Stagecoach Mountain Ranch (“SMR”) development (“project”). Refer to Item 5 for a detailed project description. Kimley-Horn conducted a Class I cultural resource file search, paleontological record search, scholarly literature review, database review, and land use research for the entire SMR project area in unincorporated Routt County, Colorado. The purpose of this Cultural and Paleontological Assessment is to identify any known or potential historical, archaeological, and/or paleontological resources in the project area. As part of the Routt County 1041 application, this technical report identifies the potential impacts and net effects the project may have on any known historical, archaeological, and/or paleontological resources.

3.0 Regulatory Constraints

The proposed project requires a 1041 permit in Routt County, Colorado. Therefore, Kimley-Horn cultural resources management staff completed this Cultural and Paleontological Assessment pursuant to applicable Routt County regulations outlined below. There is no known state or federal nexus to the proposed project. Should a state or federal nexus exist in the future, additional work may be required pursuant to applicable state and/or federal regulations, such as Section 106 of the National Historic Preservation Act (36 Code of Federal Regulations 800), the Colorado State Register Act (Colorado Revised Statutes 34-80.1-104), and/or the Historical, Prehistorical, and Archaeological Resources Act.

Routt County 1041 Regulations

The Routt County 1041 regulations require the following consideration of “Areas of Historic or Archaeological Importance” (Routt County 2024:243) during the permit application process:

- a. Map and description of all sites of historic or archaeological interest.
- b. Description of the impacts and net effect of the Project on sites of paleontological, historic or archaeological interest.

Routt County Master Plan

The Routt County Master Plan outlines the following goal and policies related to the protection of historic and cultural resources (Routt County 2022:33-34).

Goals:

1. Routt County’s historic and cultural landscapes and places define its character and are a source of value for those who live, work, or visit here. The County will continue to protect its cultural, human and physical resources through policies that strengthen preservation efforts and safeguard places that need to be preserved for future generations.

Policies:

1. The importance of preservation of cultural and historic resources, including archeological sites, historic structures, natural areas, and agricultural landscapes should be considered in the review of proposed new land uses.
2. Support adaptive reuse of historic structures.

3. Encourage new development to incorporate, complement, or reuse historic structures and cultural places or elements.
4. Allocate resources and identify additional funding sources to maintain the cultural heritage of structures, lands, vistas and other locations of significance.
5. Recognize that modern needs for technology and connectivity are not incompatible with historical and cultural preservation and can typically be integrated into preservation and adaptive reuse projects without compromise to technological or preservation objectives.

Routt County Register of Historic Properties

The Routt County Register of Historic Properties is a local register for historic designation and documentation of eligible historic properties. The register is a voluntary and honorary register with no additional regulations to protect the historic character of the resource (Historic Routt County 2024). Applications for designation are reviewed and approved by the Routt County Historic Preservation Board. Eligibility for designation is determined by meeting at least one of the following criteria:

- A. Its character, interest, or value as part of the development, heritage, or cultural characteristics of Routt County, the State of Colorado, or the United States;
- B. Its location as a site of a significant historic event;
- C. Its identification with a person or persons who significantly contributed to the culture and development of Routt County;
- D. Its exemplification of the cultural, economic, social, or historic heritage of Routt County;
- E. Its portrayal of the environment of a group of people in an era of history characterized by a distinctive architectural style;
- F. Its embodiment of distinguishing characteristics of an architectural type or specimen;
- G. Its identification as the work of an architect or master builder whose individual work has influenced the development of Routt County;
- H. Its embodiment of elements of architectural design, detail, materials, and/or craftsmanship that represent a significant architectural innovation;
- I. Its relationship to other distinctive areas that are eligible for preservation according to a plan passed on an historic, cultural, or architectural motif; and
- J. Its unique location or singular physical characteristic representing an established and familiar visual feature of a neighborhood, a community, or Routt County.

4.0 Methodology

Kimley-Horn staff conducted the following methodology for the Cultural and Paleontological Assessment to identify any known or potential historical, archaeological, and/or paleontological resources in the project area:

- a Class I cultural resource file search with the Office of Archaeology and Historic Preservation (OAHP),
- paleontological record searches at the Colorado University Museum of Natural History (CUMNH) and the Denver Museum of Nature and Science (DMNS),
- a scholarly literature review,
- a review of geological and soil maps,
- a review of historical maps and images,

- a review of property records,
- a review of digital cultural and paleontological databases, and
- analysis of potential impacts and net effects to any identified historical, archaeological, and/or paleontological resources.

Definitions

Kimley-Horn staff utilized the following definitions to identify known or potential historical, archaeological, and/or paleontological resources in the project area:

- Archaeological resource: all sites, deposits, structures, or objects which are at least 100 years of age, and which provide information pertaining to the historical or prehistorical culture of people within the boundaries of the state of Colorado.
- Historical resource: all sites, deposits, structures, or objects which are at least 50 years of age, and which provide information pertaining to the culture of people during the historical period. A cultural resource listed in or eligible for listing in the National and/or State Register of Historic Places (NRHP/SRHP) is a “historic property.”
- Paleontological resource: fossils and other remains of prehistoric animals, plants, insects, and other objects of natural history within Colorado that do not show evidence of human association (8 CCR 1504-7).

5.0 Results of Cultural Resource Review

Kimley-Horn reviewed previous cultural resource survey reports and previous resource documentation completed in the project area and within a ¼-mile buffer by conducting a file search with the Office of Archaeology and Historic Preservation (OAHP). The OAHP provided the cultural file search results on October 22, 2024 (File Search Number 26561) and the cultural resource record reproductions on November 20, 2024 (see **Attachment 2**).

The OAHP file search identified one previously recorded cultural resources in the project area and two previous cultural survey reports (Tables 1-2; see **Attachment 1, Figure 1**). The OAHP identified additional reports and resources in the ¼-mile buffer. The location of one resource was not provided by OAHP. Most of the project area has not been surveyed.

Table 1. Cultural Resources Identified within the Record Search Area.

Site No.	Site Name	Age	NRHP, SRHP, & Routt County RHD Eligibility	Location	Recording Institution
5RT.449	<i>Jules Herold Place</i>	Historic	NRHP: Not eligible SRHP: Unevaluated RHD: Unevaluated	Buffer	University of Colorado at Boulder
5RT.450	<i>Stage Wagon Routes</i>	Historic	NRHP: Not eligible SRHP: Unevaluated RHD: Unevaluated	Buffer	University of Colorado at Boulder
5RT.451	<i>Traditional Irrigation System</i>	Historic	NRHP: Not eligible SRHP: Unevaluated RHD: Unevaluated	Not Provided by OAHP	Colorado-Ute Electric Association, Inc. and University of Colorado at Boulder
5RT.3485.1	<i>County Road 12 - Segment</i>	Historic	NRHP: Does not support eligibility of entire linear source SRHP: Unevaluated RHD: Unevaluated	Project Area	ERO Resources Corporation

Table 2. Cultural Surveys Identified within the Record Search Area.

Survey No.	Report Title (Date)	Institution
MC.LM.R319*	<i>A Class III Cultural Resources Inventory of the Hayden Gore Pass 345 Kv Transmission Line Routt and Grand Counties, Colorado and Addendums 1-4 (11-00-85; 4/26/2005)</i>	BLM Kremmling Field Office - Grand River Institution
RT.LM.NR47*	<i>A Cultural Resource Inventory of the Proposed Wittemeyer Land Exchange in Routt County, Colorado (10-00-90; 4/28/2005)</i>	BLM Little Snake Field Office
RT.R.R2	<i>Cultural Resources Inventory of the Stagecoach Reservoir Project, Routt County, Colorado (5/10/2005)</i>	Bureau of Reclamation – Western Colorado Grand Junction – University of Colorado at Boulder
RT.FS.R222	<i>A Class III Cultural Resource Inventory for the Lawson Creek Vegetation Management Project Medicine Bow-Routt National Forests and Thunder Basin National Grassland, Yampa Ranger District, Routt County, Colorado (R2021020601001; Unk. Date)</i>	Medicine Bow-Routt National Forests – Thunder Basin National Grassland

*Intersects Project Area

Kimley-Horn also reviewed archival and historical data for the project area, such as the Routt County Register of Historic Properties, U.S. Geological Survey maps from 1954 through 2022, the county assessor’s website, water records, and historical aerial imagery dating from 1965 through 2021, to identify undocumented potential historical resources (Colorado State Highway Department 1936; Colorado’s Decision Support Systems 2024 General Land Office 2024; Routt County Tax Assessor’s Office 2024; Nationwide Environmental Title Research 2024; U.S. Geological Survey 1954, 1957, 1958, 1960, 1962, 1964, 1965, 1972, 1980, 2000). Based on a review of the archival records, Kimley-Horn staff newly identified two (2) additional historic-era resources in the project area, including one (1) reservoir constructed before 1954 and one (1) historic site constructed before 1968, according to historic topographic maps and aerial images (Table 3; see **Attachment 1, Figure 2**). Potential historical sites include residential buildings that are 50 years or older, as depicted or observable in archival records, that have since been razed or abandoned.

Table 3. Unrecorded Cultural Resources in the Project Area.

Temporary Site No. & Description	Address / Location	Date Constructed	NRHP, SRHP, & Routt County RHD Eligibility
KHA-SMR-01, Historic Reservoir	40.2226147N, -106.8879166W	Pre-1954	Unevaluated
KHA-SMR-02, Historic Site	40.2201715N, -106.8966153W	Pre-1968	Unevaluated

Cultural Resource Descriptions

The Routt County 1041 permit application requires a description of all sites of historic or archaeological interest. As such, a detailed description of the identified cultural resources is outlined below.

5RT.3485.1

The historic resource 5RT.3485.1 is also known as a segment of County Road 12. This travel route is first portrayed on historical topographic maps in 1954, and therefore the route likely dates to the early 1950s. The road has been subject to minor maintenance since its construction. The site record notes that the road

was not a significant travel route at an important period in history. The entire road was recommended as eligible per Colorado SHPO guidelines for linear resources, because the road was not documented in its entirety during the previous inventory. The road dates to the Postwar Interstate Era period of significance (1945–1973). This county road served rural communities beginning in the 1950s and continues to provide access to the USFS-Routt National Forest and surrounding areas today. This segment of the road was recommended as non-supporting of the overall resource potential eligibility. The site record notes that, although recommended eligible pursuant to SHPO guidelines, the entire County Road 12 is unlikely to be formally listed under any criteria.

KHA-SMR-01

The historic resource KHA-SMR-01 has not been formally recorded on a site record. Kimley-Horn staff identified the resource on historic topographic maps and images. The resource consists of a water reservoir that was constructed before 1954. The reservoir is adjacent to an unpaved access road and measures approximately 200 feet long by 100 feet wide. According to modern aerial imagery, the reservoir is still in active use as a reservoir.

KHA-SMR-02

The historic resource KHA-SMR-02 has not been formally recorded on a site record. Kimley-Horn staff identified the resource on historic topographic maps and images. The resource consists of the remnants and foundations of four historic-era buildings and structures. The buildings and ancillary structures were built before 1968 and demolished between 1983 and 1999. As such, the buildings are no longer in use and have been abandoned.

6.0 Results of Paleontological Resource Review

The DMNS and CUMNH provided the paleontological record search results on November 15, 2024, and November 21, 2024, respectively (see **Attachment 3**). The results of the paleontological records searches at the UMNH and DMNS and the literature search indicate that the project area does not cross any known museum fossil localities. Kimley-Horn staff also reviewed geological maps and digital paleontological repositories, such as the Bureau of Land Management's (BLM) Potential Fossil Yield Classification (PFYC) rankings and the Paleobiology Database (PBDB). The PFYC ranks the geologic units in the project area from very low (PFYC 1) to very high (PFYC 5) resource potential. The majority of the project is located in areas with geologic units having very high paleontological potential (PFYC 5) (see **Attachment 1, Figure 3**). PFYC 5 ranking's management concerns are high to very high. The remaining project area consists of moderate paleontological potential (PFYC 3) and very low paleontological potential (PFYC 1). PFYC 3 ranking's management concerns are moderate as the existence of significant paleontological resources is known to be low. PFYC 1 ranking's management concerns are usually negligible or not applicable.

The geologic deposits underlying the project area are largely mapped as part of the Browns Park Formation (Tbp). The deposits consist of fluvial siltstone, claystone, and conglomerate, loosely consolidated eolian sandstone, and volcanic ash (Tweto 1976). The formation dates to the Miocene epoch. In summary, the project area has a high sensitivity for the potential presence of paleontological resources, but there are no previously documented fossil localities.

7.0 Impact Analysis and Conclusion

Kimley-Horn conducted a Cultural and Paleontological Assessment of the SMR project area via record searches, research, and database reviews. The purpose of this Cultural and Paleontological Assessment is to identify any known or potential historical, archaeological, and/or paleontological resources in the project area. As part of the Routt County 1041 application, this technical report describes the potential impacts and net effects the project would have on any present historical, archaeological, and/or paleontological resources.

Historical Impacts

The project area intersects one (1) previously documented historical resource and two unrecorded historical resources known as 5RT.3485.1, KHA-SMR-01, and KHA-SMR-02. The project design will avoid active water reservoirs (KHA-SMR-01). However, impacts to 5RT.3485.1 and KHA-SMR-02 are anticipated during construction due to the currently proposed project design. Most existing roads within the project area are being improved and incorporated into the project design, but County Road 12 (5RT.3485.1) is an overgrown, unimproved road and will not be included in the project design. As such, the road will be impacted approximately 2,900 linear feet from the eastern boundary to the west. Additional segments of County Road 12 will be impacted by the construction of new road alignments throughout the project area. Additionally, adaptive reuse of the historic demolished remnants (KHA-SMR-02) was not feasible in the project design. Therefore, KHA-SMR-02 will be removed during construction to allow for the proposed design. In summary, due to project design, impacts are anticipated for KHA-SMR-02 and 5RT.3485.1. No impacts are anticipated for KHA-SMR-01.

Archaeological Impacts

Kimley-Horn did not identify any previously recorded archaeological resources in the project area during this assessment. According to the OAHP, approximately 61 acres of the project area have been previously surveyed for cultural resources. As such, most of the project area has not been surveyed. Given the number of historical resources in the vicinity, the project area has a moderate sensitivity for historic-era archaeological sites. Additional work before construction is not anticipated, because the project occurs on private land, and there is no known state or federal nexus to the project. In summary, there are no previously recorded archaeological sites in the project area, and therefore, there are no known impacts.

Paleontological Impacts

Kimley-Horn's paleontological record search results indicate that the project area does not cross any known museum fossil localities. However, there is a high paleontological potential across most of the project area due to the age of geologic deposits underlying the project area. Additional work before construction is not anticipated, because the project occurs on private land, and there is no known state or federal nexus to the project. In summary, there are no known fossil localities, and as such, there are no known impacts.

Conclusion and Recommendations

Kimley-Horn identified known impacts to 5RT.3485.1 and KHA-SMR-02 due to the currently proposed project design. Kimley-Horn did not identify any impacts to KHA-SMR-01. The two newly identified historic resources have not been formally recorded or evaluated for significance. Additionally, most of the project area has not been formally surveyed. The project area has a high paleontological sensitivity and moderate historic-era archaeological sensitivity. Therefore, there is the potential for paleontological and archaeological resources to be identified during construction. Any resources inadvertently discovered

during construction have the potential to be impacted. Additional effort related to the evaluation or treatment of 5RT.3485.1, KHA-SMR-01, and KHA-SMR-02 is not anticipated, because the project occurs on private land. There is no known state or federal nexus to the project, and the Routt County 1041 permit application process is limited to a description of the resources and potential impacts. Kimley-Horn recommends the following measures to address any potential impacts to historical, archaeological, and/or paleontological resources that may be present in the project area and identified during construction:

- Should any inadvertent discovery of cultural resources occur during construction, the developer will halt ground disturbing activities in a 20-foot radius until a State of Colorado permitted archaeologist can evaluate the discovery and make further recommendations.
- Should any inadvertent discovery of paleontological resources occur during construction, the developer will halt ground disturbing activities in a 20-foot radius until a State of Colorado permitted paleontologist can evaluate the discovery and make further recommendations.
- During project development, the historic and cultural resource policies outlined in the Routt County Master Plan should be recognized and implemented to address any potential impacts to archaeological and/or paleontological resources.

Pursuant to Section 106 of the NHPA and the Colorado State Register Act (CRS 34-80.1-104), any state or federal agency involvement in the Project may require consultation with the State Historic Preservation Office (SHPO) on potential project effects on cultural resources eligible or supporting eligibility for listing in the NRHP/SRHP prior to construction. The agency and/or SHPO may require additional work such as pedestrian survey of undisturbed areas to identify unknown cultural resources as well as evaluations or reevaluations of the NRHP/SRHP eligibility of all resources within the project area.

8.0 Certification of Results



Alexis Marchando, Environmental Scientist

Reviewed By:



Jamie Parra, MA, RPA

9.0 Attachments

Attachment 1: Figures 1-3

Attachment 2: OAHP File Search

Attachment 3: CUMNH and DMNS Locality Search

10.0 References

Associated Cultural Resource Experts

- 2002 Highways to the Sky: A Context of History of Colorado's Highway System. Colorado Department of Transportation. On file at the Colorado Office of Archaeology and Historic Preservation, Denver, Colorado.

Colorado's Decision Support Systems

- 2024 Colorado Division of Water Resources, Colorado Water Conservation Board, Colorado Decision Support Systems Structure Report webpage. Electronic document, <https://dwr.state.co.us/Tools/Structures>.

Dersch, John S.

- 2000 Mineral Resource Potential and Geology of the Routt National Forest and the Middle Park Ranger District of the Arapaho National Forest, Colorado (U.S. Geological Survey Professional Paper 1610). U.S. Department of the Interior, U.S. Geological Survey.

General Land Office

- 2024 U.S. Department of the Interior, Bureau of Land Management. General Land Office Records. Online database, <https://glorerecords.blm.gov/search/default.aspx#searchTabIndex=0&searchByTypeIndex=0>.

Historic Aerials

- 2024 Historic Aerial Viewer. Online database. Accessed January 10, 2025. <https://www.historicaerials.com/viewer>.

Historic Routt County

- 2024 Historic Designation & Documentation. Accessed January 10, 2025. <https://historicrouttcounty.org/what-we-do/historic-designation-documentation/>.

Historical, Prehistorical, and Archaeological Resources.

- 2017 8 CCR 1504-7, Code of Colorado Regulations, Department of Higher Education, Historical Society.

Horn, Jonathon C., and Holly K. Norton

- 2021 Walking the Line: Guidance for Identification, Evaluation, and Field Recordation of Historical Linear Sites in Colorado. Written by Alpine Historical Consultants, LLC for History Colorado.

Little, Barbara, Erika M. Seibert, Jan Townsend, John H. Sprinkle Jr., and John Knoerl

- 2000 National Register Bulletin: Guidelines for Evaluating and Registering Archaeological Properties. Prepared by the U.S. Department of the Interior.

Routt County

- 2022 Routt County Master Plan. Chapter 5: Historic & Cultural Resources.
2024 Chapter 7: Areas of State Interest – 1041 Regulations. 7.4 Application Submission Requirements.

Routt County Assessor's Office

2024 Property Search, <https://property.spatalest.com/co/routt#/>.

Routt County Historic Preservation Board

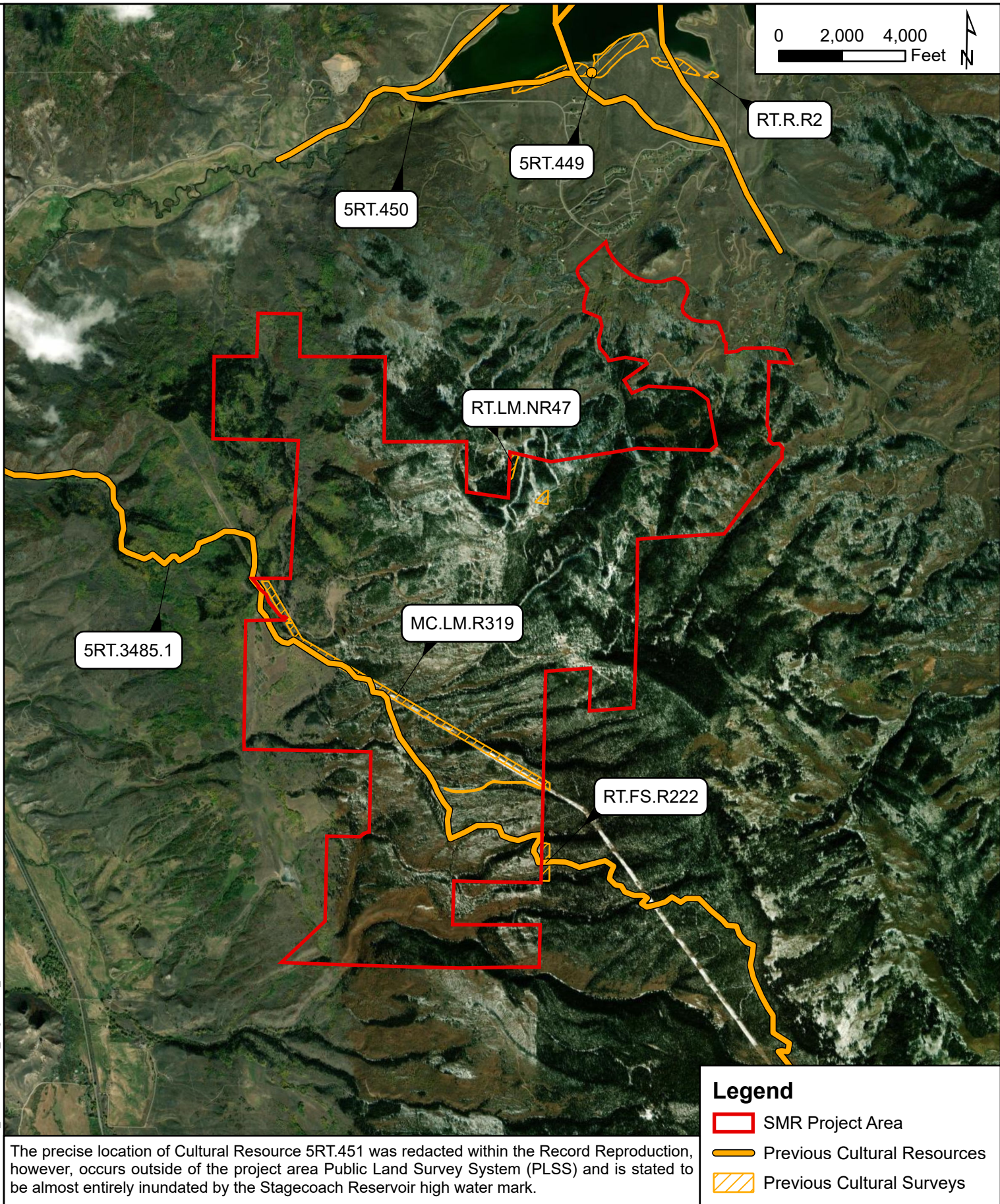
2024 Historic Preservation History and Guidelines, Routt County Historic Preservation Register,
<https://www.co.routt.co.us/108/Historic-Preservation-Board>.

Tweto, Ogden

1976 Geologic map of the Craig 1 degree x 2 degrees quadrangle, northwestern Colorado. U.S.
Geological Survey. Miscellaneous Investigations Series Map I-972.

.

Folder: K:\COS_GIS\196778000_Stagecoach_GIS\Environmental



Kimley»Horn

© 2025 Kimley-Horn and Associates, Inc.
2 N Nevada Ave, Ste 900, Colorado Springs, CO
Phone (719) 453-0180
www.kimley-horn.com

Previous Cultural Resources and Surveys

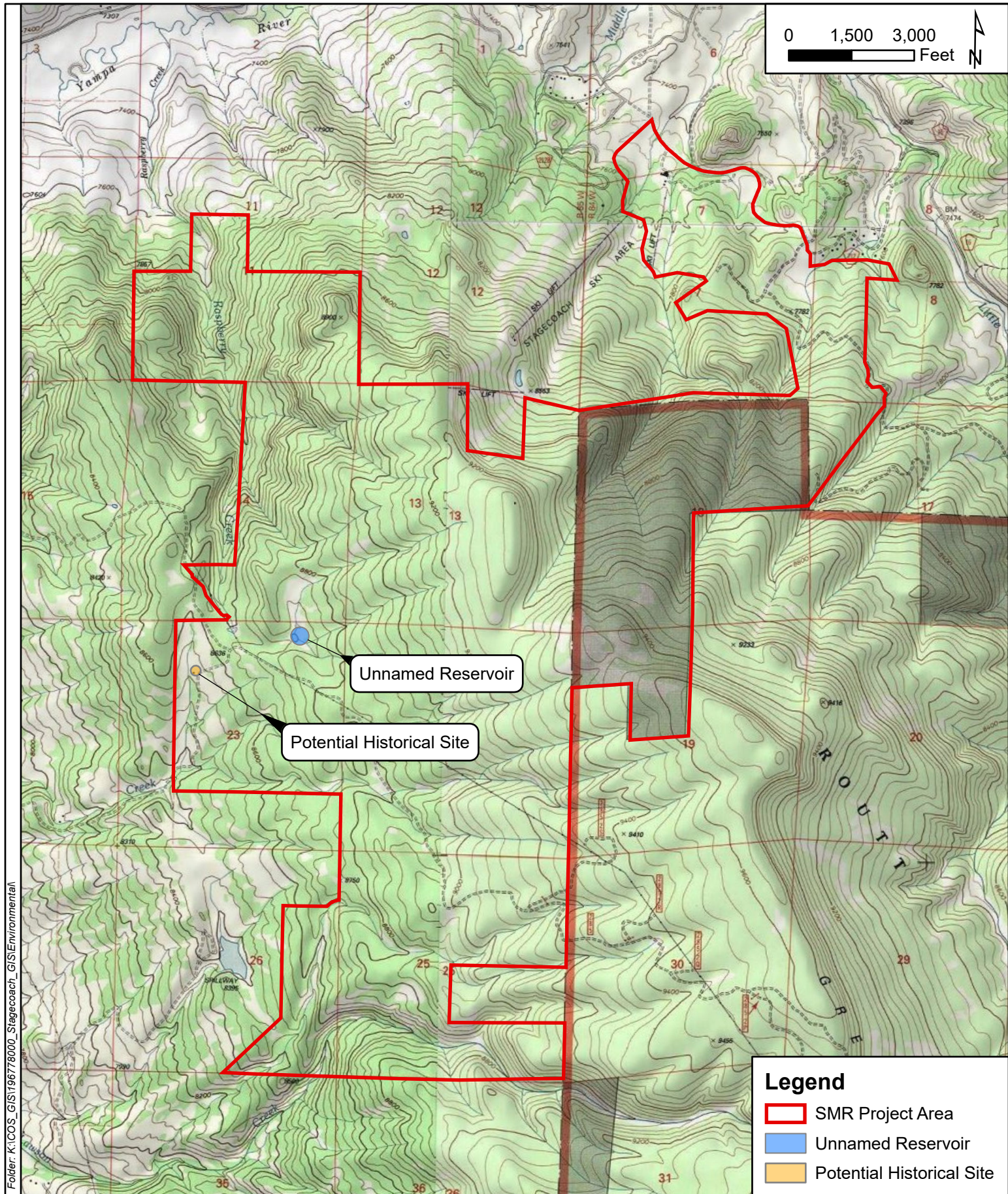
**Stagecoach Mountain Ranch Project
Routt County, Colorado**

1 IN = 4,000 FT

PROJECT NUMBER: 196778000

JANUARY 2025

FIGURE 1



Folder: K:\COS_GIS\196778000_Stagecoach_GIS\Environmental

Kimley»Horn

© 2025 Kimley-Horn and Associates, Inc.
 2 N Nevada Ave, Ste 900, Colorado Springs, CO
 Phone (719) 453-0180
www.kimley-horn.com

Potential Cultural Resources

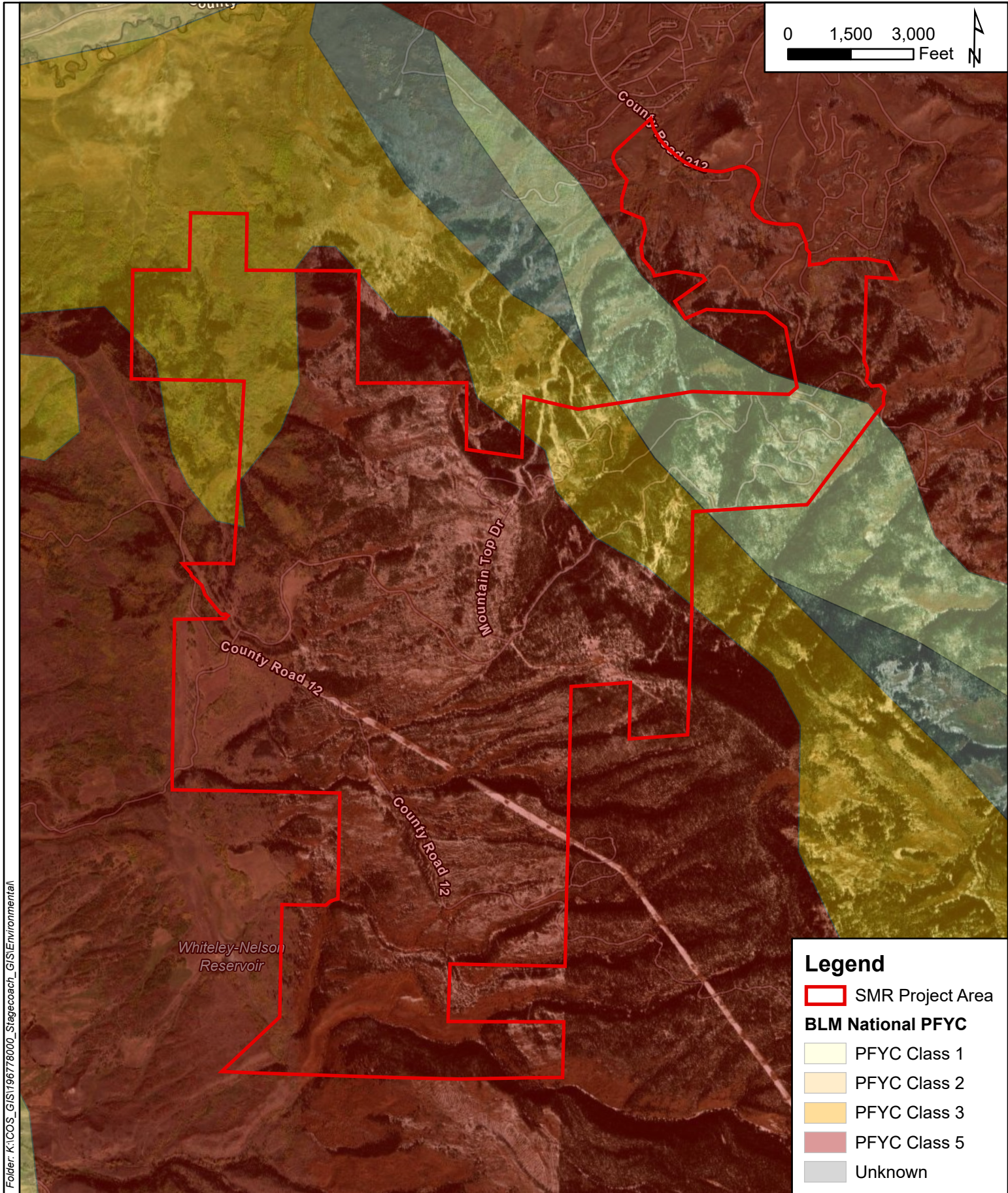
**Stagecoach Mountain Ranch Project
 Routt County, Colorado**

1 IN = 3,000 FT

PROJECT NUMBER: 196778000

JANUARY 2025

FIGURE 2



Legend

SMR Project Area

BLM National PFYC

- PFYC Class 1
- PFYC Class 2
- PFYC Class 3
- PFYC Class 5
- Unknown

Potential Fossil Yield Classification (PFYC) Geologic Units

**Stagecoach Mountain Ranch Project
Routt County, Colorado**

Kimley»Horn

© 2025 Kimley-Horn and Associates, Inc.
2 N Nevada Ave, Ste 900, Colorado Springs, CO
Phone (719) 453-0180
www.kimley-horn.com



Alexis Marchando
Kimley-Horn and Associates
2 N. Nevada Ave. Ste 900 Colorado Springs CO 80903

October 22, 2024

Re: Stagecoach 1041
File Search No. 26561

At your request, the Office of Archaeology and Historic Preservation has conducted a search of the Colorado Inventory of Cultural Resources based on your specified search criteria (the areas shown in the provided shapefiles), located in the following areas:

PM	T	R	S
6th	3N	84W	6-8, 17-19, 30
6th	3N	85W	10-14, 23-26, 35, 36
6th	4N	84W	31
6th	4N	85W	36

4 sites and 4 surveys were located in the search area(s).

If any site, district, building, structure, object, or survey area was identified within the search area, a spreadsheet of detailed information* accompanies this letter. Our records may not represent all cultural resources in Colorado, nor can they be considered comprehensive, as most of the state has not been surveyed for cultural resources. There is the possibility that as yet unidentified cultural resources exist within the proposed impact area.

This letter is not considered formal consultation under Section 106 of the National Historic Preservation Act (36 CFR 800) or the Colorado Register of Historic Places (CRS 24-80.1). In the event that there is federal or state agency involvement, please note that it is the responsibility of the agencies to meet the requirements of these regulations.

We look forward to consulting with you regarding the effect of the proposed project on significant cultural resources in accordance with the Advisory Council on Historic Preservation regulations titled "Protection of Historic Properties" or the Colorado Register of Historic Places, as applicable (<http://www.historycolorado.org/consultation-guidance>).

If you have any questions, please contact the Office of Archaeology and Historic Preservation at (303) 866-3392. Thank you for your interest in Colorado's cultural heritage.

Dawn DiPrince
State Historic Preservation Officer

*Information regarding significant archaeological resources is excluded from the Freedom of Information Act. As such, legal locations of these resources must not be included in documents for public distribution.

Locality Search Request

Requestor

Date

Name

Company

Address

Phone

Email

Project Details

Project Name

Type of Project

Project Description

Permit #

Project Location

Township, Range, Section

.kmz of Project

Boundaries Project Buffer

Zone

Please send this form via email to Kristen.MacKenzie@dmns.org

To be filled out by Museum staff

Invoice #

Paleontological Localities within Project Location:

Yes

No



Locality Search Results

Locality Search #: _____

Requestor

Name: _____

Company: _____

Address: _____

Phone: _____

Email: _____

Project Details

Project Name: _____

Type of Project

☐ Colorado Department of Transportation (CDOT) Project

CDOT Permit Number (if known): _____

☐ Other Project

☐ Project is on Federal Lands

Federal Agency (name): _____

Federal Agency Permit Number (if known): _____

☐ Project is on State Lands

State (name): _____

State Permit Number (if known): _____

Project Location:

Paleontological Localities within Project Location: ☐ Yes* ☐ No

*All requestors will receive basic locality information for the localities that are found within their project area. Only requestors with a CDOT, federal, or state permit can receive more detailed locality information for the localities that are found within their project area.