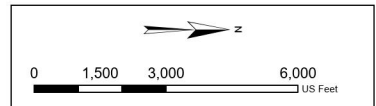


**Legend**

|                    |                        |                     |                      |                    |                         |
|--------------------|------------------------|---------------------|----------------------|--------------------|-------------------------|
| Property Line      | Existing Basins        | Drainageways        | Existing SWMM Points | Existing Ridgeline | Existing Drainage Label |
| Sheet Boundary     | Existing Roadways      | Existing SWMM Links | Outfall Points       | Design Points      |                         |
| Existing Crossings | Existing 50ft Contours |                     |                      |                    |                         |

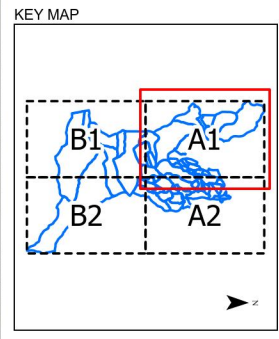
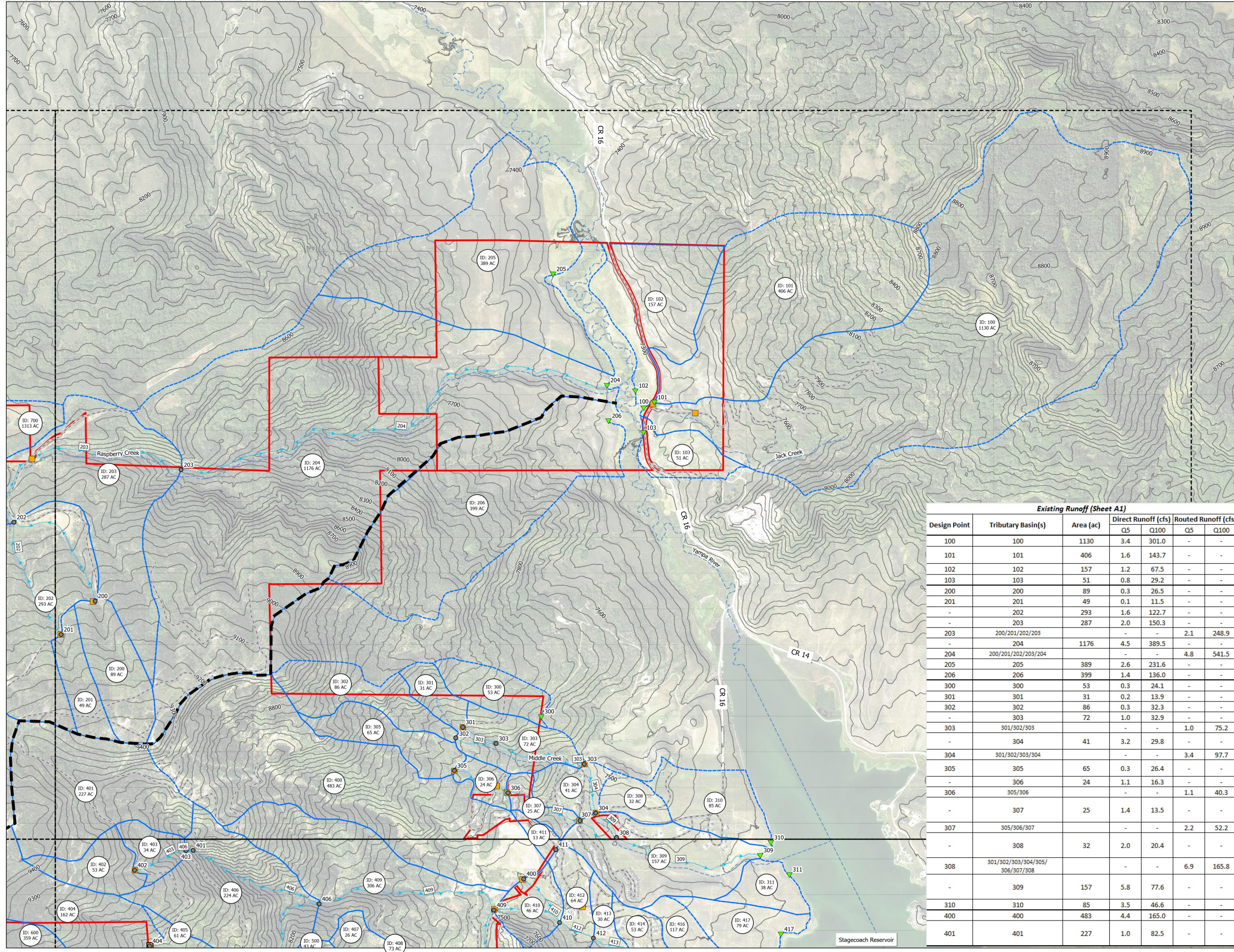


**Kimley»Horn**  
 © 2024 KIMLEY-HORN AND ASSOCIATES, INC.  
 Engineering, Planning and Environmental Consultants  
 2 North Nevada Avenue, Suite 900  
 Colorado Springs, CO (719) 453-0180

DESIGNED BY: SNM  
 DRAWN BY: TOS  
 CHECKED BY: BAH  
 DATE: 09/17/2024

**STAGECOACH  
 DRAINAGE BASIN STUDY  
 EXISTING DRAINAGE MAP - OVERVIEW**

PROJECT NO.  
196778000  
 DRAWING NAME  
EX OVERVIEW



**Legend**

- Sheet Boundary
- Existing Roadways
- Existing Crossings
- Existing Basins
- Property Line
- Existing 50ft Contours
- Drainageways
- Existing SWMM Links
- Existing SWMM Points
  - Outfall Points
  - Design Points
- Existing Ridgeline
- Existing Drainage Label

0 500 1,000 2,000 Feet

**Existing Runoff (Sheet A1)**

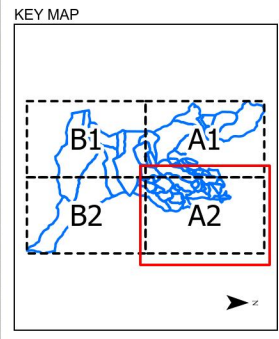
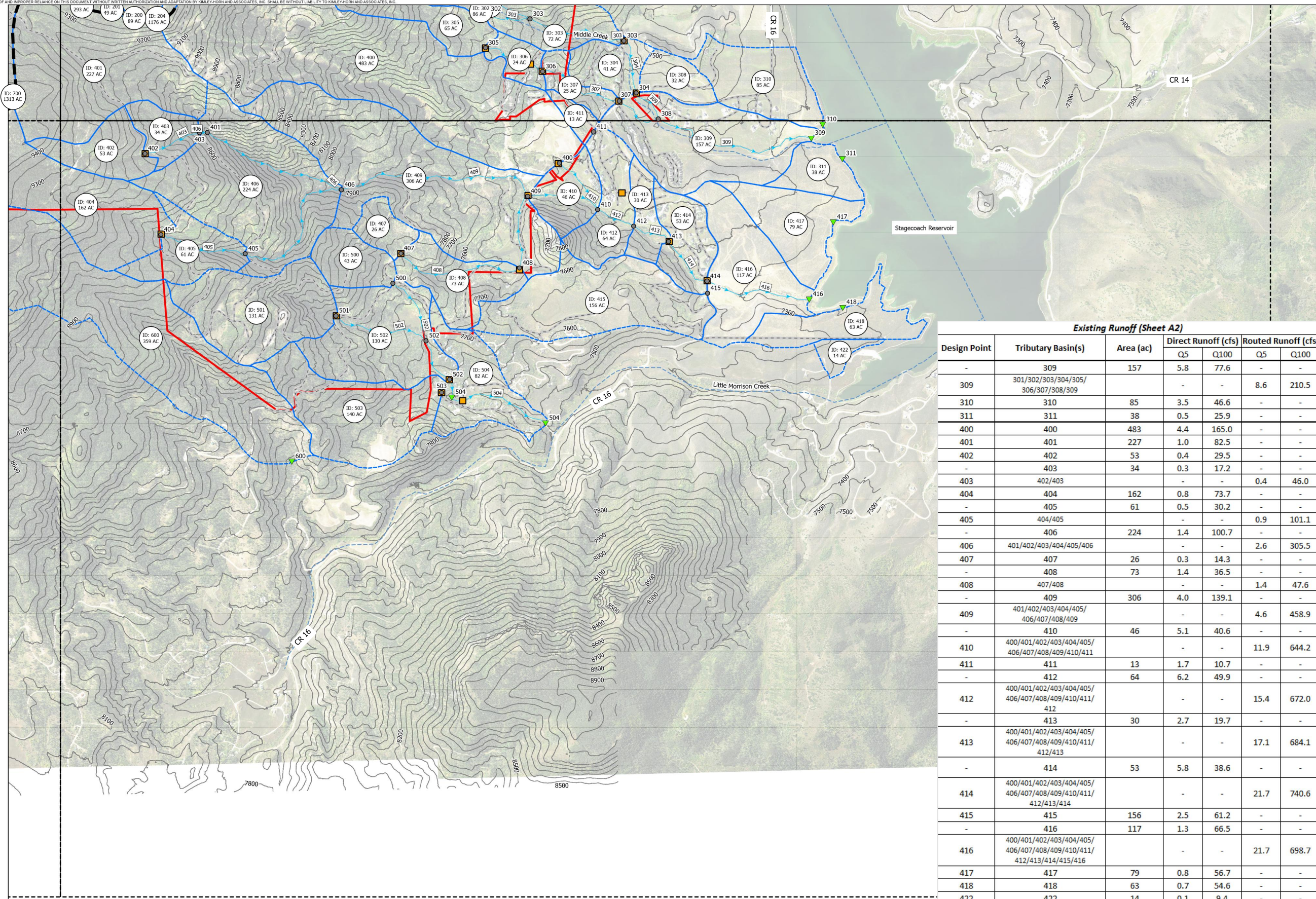
| Design Point | Tributary Basin(s)              | Area (ac) | Direct Runoff (cfs) |       | Routed Runoff (cfs) |       |
|--------------|---------------------------------|-----------|---------------------|-------|---------------------|-------|
|              |                                 |           | Q5                  | Q100  | Q5                  | Q100  |
| 100          | 100                             | 1130      | 3.4                 | 301.0 | -                   | -     |
| 101          | 101                             | 406       | 1.6                 | 143.7 | -                   | -     |
| 102          | 102                             | 157       | 1.2                 | 67.5  | -                   | -     |
| 103          | 103                             | 51        | 0.8                 | 29.2  | -                   | -     |
| 200          | 200                             | 89        | 0.3                 | 26.5  | -                   | -     |
| 201          | 201                             | 49        | 0.1                 | 11.5  | -                   | -     |
| -            | 202                             | 293       | 1.6                 | 122.7 | -                   | -     |
| -            | 203                             | 287       | 2.0                 | 150.3 | -                   | -     |
| 203          | 200/201/202/203                 | -         | -                   | -     | 2.1                 | 248.9 |
| -            | 204                             | 1176      | 4.5                 | 389.5 | -                   | -     |
| 204          | 200/201/202/203/204             | -         | -                   | -     | 4.8                 | 541.5 |
| 205          | 205                             | 389       | 2.6                 | 231.6 | -                   | -     |
| 206          | 206                             | 399       | 1.4                 | 136.0 | -                   | -     |
| 300          | 300                             | 53        | 0.3                 | 24.1  | -                   | -     |
| 301          | 301                             | 31        | 0.2                 | 13.9  | -                   | -     |
| 302          | 302                             | 86        | 0.3                 | 32.3  | -                   | -     |
| -            | 303                             | 72        | 1.0                 | 32.9  | -                   | -     |
| 303          | 301/302/303                     | -         | -                   | -     | 1.0                 | 75.2  |
| -            | 304                             | 41        | 3.2                 | 29.8  | -                   | -     |
| 304          | 301/302/303/304                 | -         | -                   | -     | 3.4                 | 97.7  |
| 305          | 305                             | 65        | 0.3                 | 26.4  | -                   | -     |
| -            | 306                             | 24        | 1.1                 | 16.3  | -                   | -     |
| 306          | 305/306                         | -         | -                   | -     | 1.1                 | 40.3  |
| -            | 307                             | 25        | 1.4                 | 13.5  | -                   | -     |
| 307          | 305/306/307                     | -         | -                   | -     | 2.2                 | 52.2  |
| -            | 308                             | 32        | 2.0                 | 20.4  | -                   | -     |
| 308          | 301/302/303/304/305/306/307/308 | -         | -                   | -     | 6.9                 | 165.8 |
| -            | 309                             | 157       | 5.8                 | 77.6  | -                   | -     |
| 310          | 310                             | 85        | 3.5                 | 46.6  | -                   | -     |
| 400          | 400                             | 483       | 4.4                 | 165.0 | -                   | -     |
| 401          | 401                             | 227       | 1.0                 | 82.5  | -                   | -     |

**Kimley»Horn**  
 © 2024 KIMLEY-HORN AND ASSOCIATES, INC.  
 Engineering, Planning and Environmental Consultants  
 2 North Nevada Avenue, Suite 900  
 Colorado Springs, CO (719) 453-0180

DESIGNED BY: SNM  
 DRAWN BY: TOS  
 CHECKED BY: BAH  
 DATE: 9/17/2024

**STAGECOACH  
 DRAINAGE BASIN STUDY  
 EXISTING DRAINAGE MAP**

PROJECT NO.  
19677800  
 DRAWING NAME  
EX\_DRN  
 Sheet: A1



**Legend**

- Sheet Boundary
- Existing Roadways
- Existing Crossings
- Existing Basins
- Property Line
- Existing 50ft Contours
- Drainageways
- Existing SWMM Links

**Existing SWMM Points**

- Outfall Points
- Design Points
- Existing Ridgeline

BASIN ID ACREAGE Existing Drainage Label

**Existing Runoff (Sheet A2)**

| Design Point | Tributary Basin(s)  | Area (ac) | Direct Runoff (cfs) |       | Routed Runoff (cfs) |       |
|--------------|---|-----------|---------------------|-------|---------------------|-------|
|              |   |           | Q5                  | Q100  | Q5                  | Q100  |
| -            | 309   | 157       | 5.8                 | 77.6  | -                   | -     |
| 309          | 301/302/303/304/305/<br>306/307/308/309                                     |           | -                   | -     | 8.6                 | 210.5 |
| 310          | 310   | 85        | 3.5                 | 46.6  | -                   | -     |
| 311          | 311   | 38        | 0.5                 | 25.9  | -                   | -     |
| 400          | 400   | 483       | 4.4                 | 165.0 | -                   | -     |
| 401          | 401   | 227       | 1.0                 | 82.5  | -                   | -     |
| 402          | 402   | 53        | 0.4                 | 29.5  | -                   | -     |
| -            | 403   | 34        | 0.3                 | 17.2  | -                   | -     |
| 403          | 402/403   |           | -                   | -     | 0.4                 | 46.0  |
| 404          | 404   | 162       | 0.8                 | 73.7  | -                   | -     |
| -            | 405   | 61        | 0.5                 | 30.2  | -                   | -     |
| 405          | 404/405   |           | -                   | -     | 0.9                 | 101.1 |
| -            | 406   | 224       | 1.4                 | 100.7 | -                   | -     |
| 406          | 401/402/403/404/405/406   |           | -                   | -     | 2.6                 | 305.5 |
| 407          | 407   | 26        | 0.3                 | 14.3  | -                   | -     |
| -            | 408   | 73        | 1.4                 | 36.5  | -                   | -     |
| 408          | 407/408   |           | -                   | -     | 1.4                 | 47.6  |
| -            | 409   | 306       | 4.0                 | 139.1 | -                   | -     |
| 409          | 401/402/403/404/405/<br>406/407/408/409                                     |           | -                   | -     | 4.6                 | 458.9 |
| -            | 410   | 46        | 5.1                 | 40.6  | -                   | -     |
| 410          | 400/401/402/403/404/405/<br>406/407/408/409/410/411                         |           | -                   | -     | 11.9                | 644.2 |
| 411          | 411   | 13        | 1.7                 | 10.7  | -                   | -     |
| -            | 412   | 64        | 6.2                 | 49.9  | -                   | -     |
| 412          | 400/401/402/403/404/405/<br>406/407/408/409/410/411/<br>412                 |           | -                   | -     | 15.4                | 672.0 |
| -            | 413   | 30        | 2.7                 | 19.7  | -                   | -     |
| 413          | 400/401/402/403/404/405/<br>406/407/408/409/410/411/<br>412/413             |           | -                   | -     | 17.1                | 684.1 |
| -            | 414   | 53        | 5.8                 | 38.6  | -                   | -     |
| 414          | 400/401/402/403/404/405/<br>406/407/408/409/410/411/<br>412/413/414         |           | -                   | -     | 21.7                | 740.6 |
| 415          | 415   | 156       | 2.5                 | 61.2  | -                   | -     |
| -            | 416   | 117       | 1.3                 | 66.5  | -                   | -     |
| 416          | 400/401/402/403/404/405/<br>406/407/408/409/410/411/<br>412/413/414/415/416 |           | -                   | -     | 21.7                | 698.7 |
| 417          | 417   | 79        | 0.8                 | 56.7  | -                   | -     |
| 418          | 418   | 63        | 0.7                 | 54.6  | -                   | -     |
| 422          | 422   | 14        | 0.1                 | 9.4   | -                   | -     |
| 500          | 500   | 43        | 0.3                 | 19.7  | -                   | -     |
| 501          | 501   | 131       | 1.4                 | 66.6  | -                   | -     |
| -            | 502   | 130       | 1.5                 | 62.7  | -                   | -     |
| 502          | 500/501/502   |           | -                   | -     | 2.1                 | 142.3 |
| 503          | 503   | 140       | 1.3                 | 62.0  | -                   | -     |
| -            | 504   | 82        | 5.8                 | 48.7  | -                   | -     |
| 504          | 500/501/502/503/504   |           | -                   | -     | 6.7                 | 237.2 |
| 600          | 600   | 359       | 1.2                 | 114.1 | -                   | -     |

**Kimley»Horn**

DESIGNED BY: SNM  
DRAWN BY: TOS  
CHECKED BY: BAH  
DATE: 9/17/2024

**STAGECOACH  
DRAINAGE BASIN STUDY  
EXISTING DRAINAGE MAP**

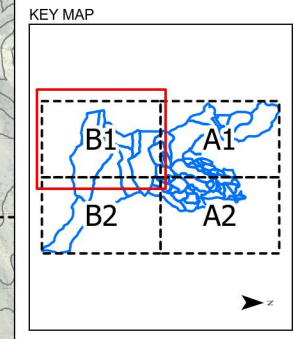
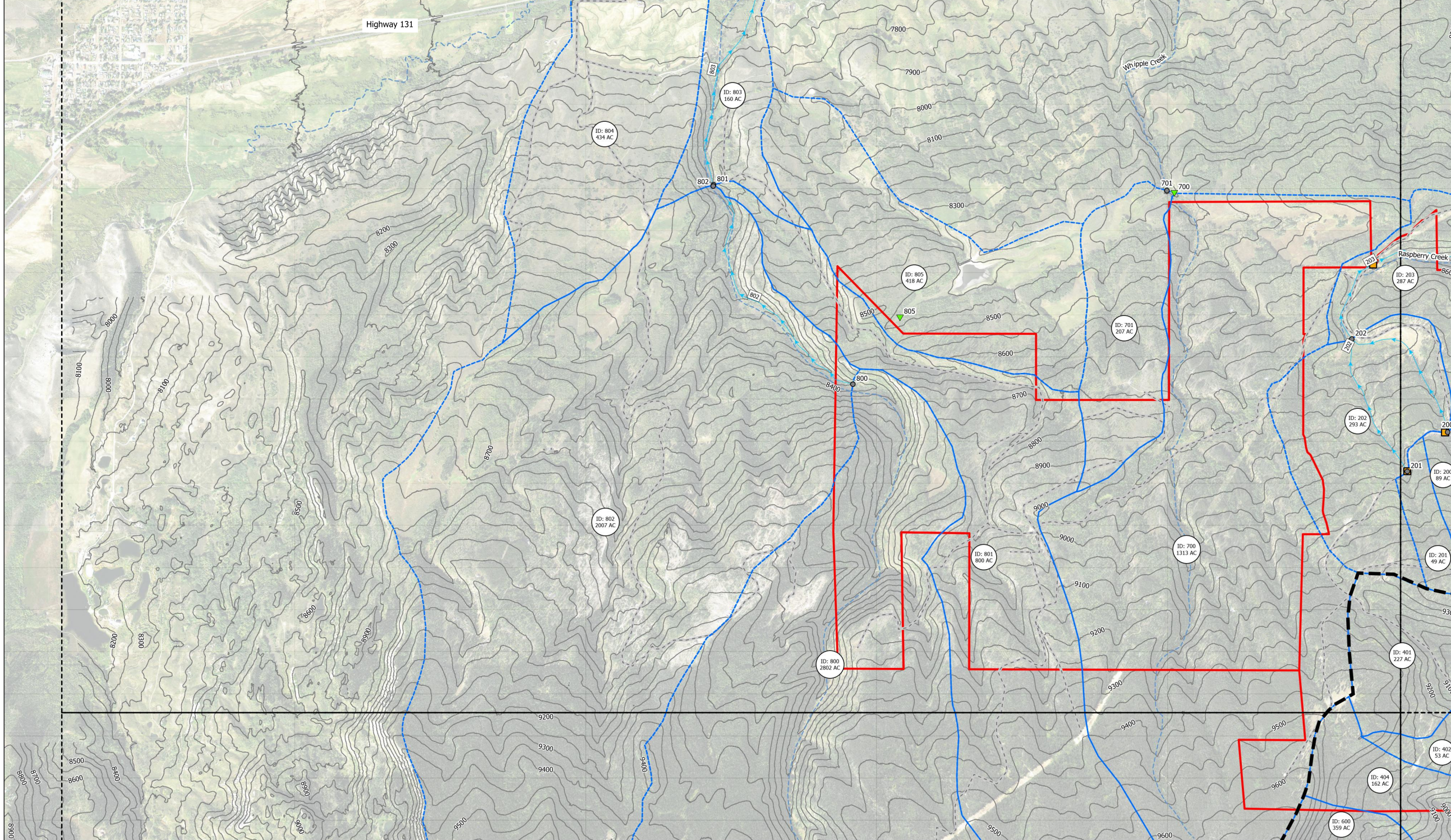
PROJECT NO.  
19677800  
DRAWING NAME  
EX\_DRN  
Sheet: A2

2 North Nevada Avenue, Suite 900  
Colorado Springs, CO (719) 453-0180

© 2024 KIMLEY-HORN AND ASSOCIATES, INC.  
Engineering, Planning and  
Environmental Consultants

**Existing Runoff (Sheet B1)**

| Design Point | Tributary Basin(s) | Area (ac) | Direct Runoff (cfs) |       | Routed Runoff (cfs) |       |
|--------------|--------------------|-----------|---------------------|-------|---------------------|-------|
|              |                    |           | Q5                  | Q100  | Q5                  | Q100  |
| -            | 202                | 293       | 1.6                 | 122.7 | -                   | -     |
| 202          | 200/201/202        | -         | -                   | -     | 1.6                 | 145.4 |
| -            | 203                | 287       | 2.0                 | 150.3 | -                   | -     |
| -            | 700                | 1313      | 1.7                 | 230.1 | -                   | -     |
| 700          | 700/701            | -         | -                   | -     | 2.5                 | 300.7 |
| 701          | 701                | 207       | 1.0                 | 80.3  | -                   | -     |
| 800          | 800                | 2802      | 3.9                 | 411.2 | -                   | -     |
| 801          | 801                | 800       | 0.5                 | 74.2  | -                   | -     |
| -            | 802                | 2007      | 6.5                 | 608.6 | -                   | -     |
| 802          | 800/801/802        | -         | -                   | -     | 7.1                 | 878.7 |
| -            | 803                | 160       | 0.8                 | 62.0  | -                   | -     |
| 803          | 800/801/802/803    | -         | -                   | -     | 7.0                 | 904.9 |
| 804          | 804                | 434       | 2.1                 | 149.2 | -                   | -     |
| 805          | 805                | 418       | 1.4                 | 133.9 | -                   | -     |



**Legend**

- Sheet Boundary
- Existing Roadways
- Existing Crossings
- Existing Basins
- Property Line
- Existing 50ft Contours
- Drainageways
- Existing SWMM Links
- Existing SWMM Points
  - Outfall Points
  - Design Points
  - Existing Ridgeline
- BASIN ID ACREAGE Existing Drainage Label

0 500 1,000 2,000 Feet

**Kimley-Horn**

© 2024 KIMLEY-HORN AND ASSOCIATES, INC.  
2 North Nevada Avenue, Suite 900  
Colorado Springs, CO (719) 453-0180  
Engineering, Planning and Environmental Consultants

DESIGNED BY: SNM  
DRAWN BY: TOS  
CHECKED BY: BAH  
DATE: 9/17/2024

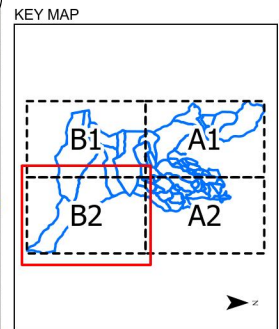
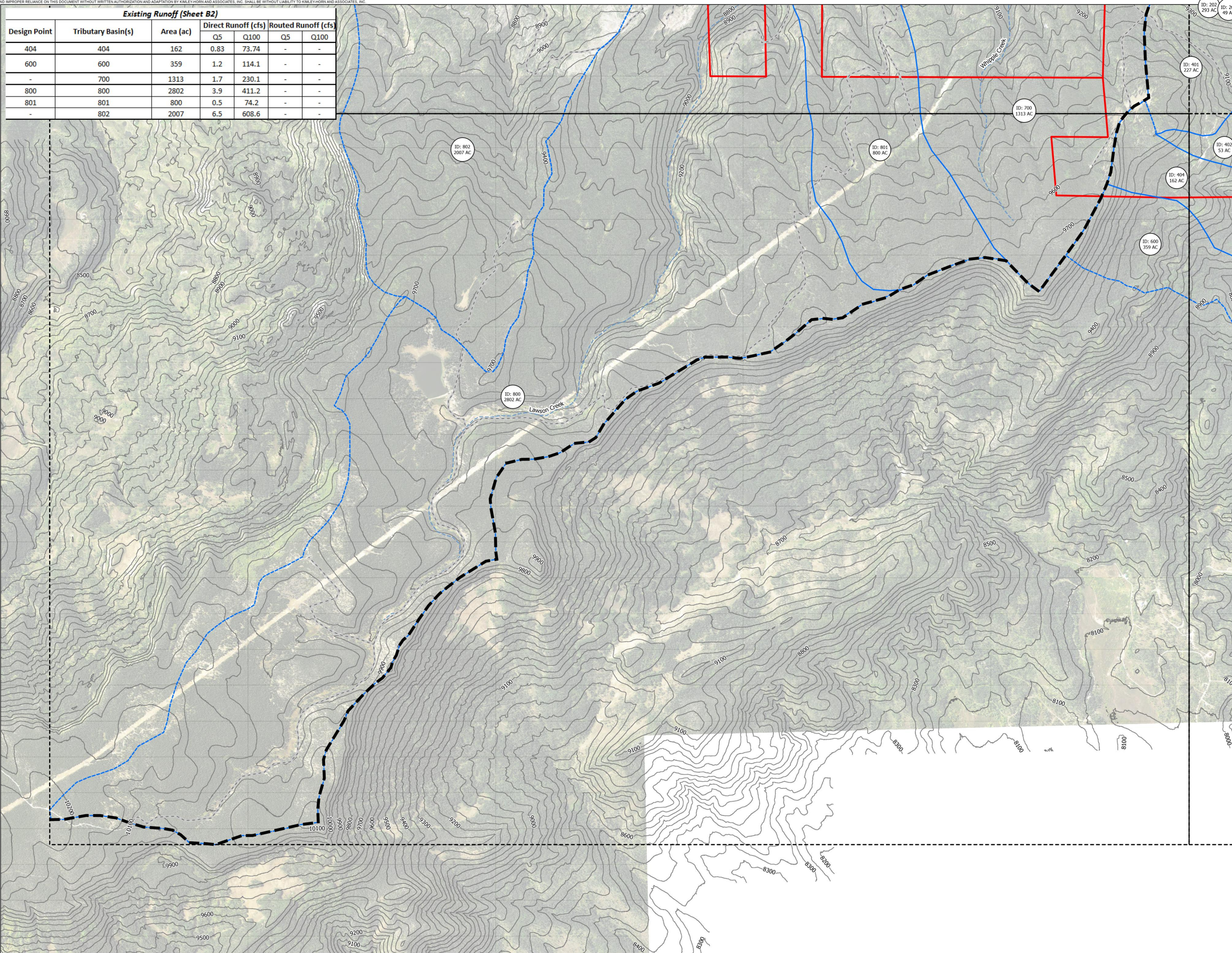
**STAGECOACH  
DRAINAGE BASIN STUDY  
EXISTING DRAINAGE MAP**

PROJECT NO.  
19677800

DRAWING NAME  
EX\_DRN

Sheet: B1

| Existing Runoff (Sheet B2) |                    |           |                     |       |                     |      |
|----------------------------|--------------------|-----------|---------------------|-------|---------------------|------|
| Design Point               | Tributary Basin(s) | Area (ac) | Direct Runoff (cfs) |       | Routed Runoff (cfs) |      |
|                            |                    |           | Q5                  | Q100  | Q5                  | Q100 |
| 404                        | 404                | 162       | 0.83                | 73.74 | -                   | -    |
| 600                        | 600                | 359       | 1.2                 | 114.1 | -                   | -    |
| -                          | 700                | 1313      | 1.7                 | 230.1 | -                   | -    |
| 800                        | 800                | 2802      | 3.9                 | 411.2 | -                   | -    |
| 801                        | 801                | 800       | 0.5                 | 74.2  | -                   | -    |
| -                          | 802                | 2007      | 6.5                 | 608.6 | -                   | -    |



**Legend**

- Sheet Boundary
- Existing Roadways
- Existing Crossings
- Existing Basins
- Property Line
- Existing 50ft Contours
- Drainageways
- Existing SWMM Links

**Existing SWMM Points**

- Outfall Points
- Design Points
- Existing Ridgeline

BASIN ID  
ACREAGE Existing Drainage Label

0 500 1,000 2,000 Feet

**Kimley-Horn**  
 © 2024 KIMLEY-HORN AND ASSOCIATES, INC.  
 Engineering, Planning and Environmental Consultants  
 2 North Nevada Avenue, Suite 900  
 Colorado Springs, CO (719) 453-0180

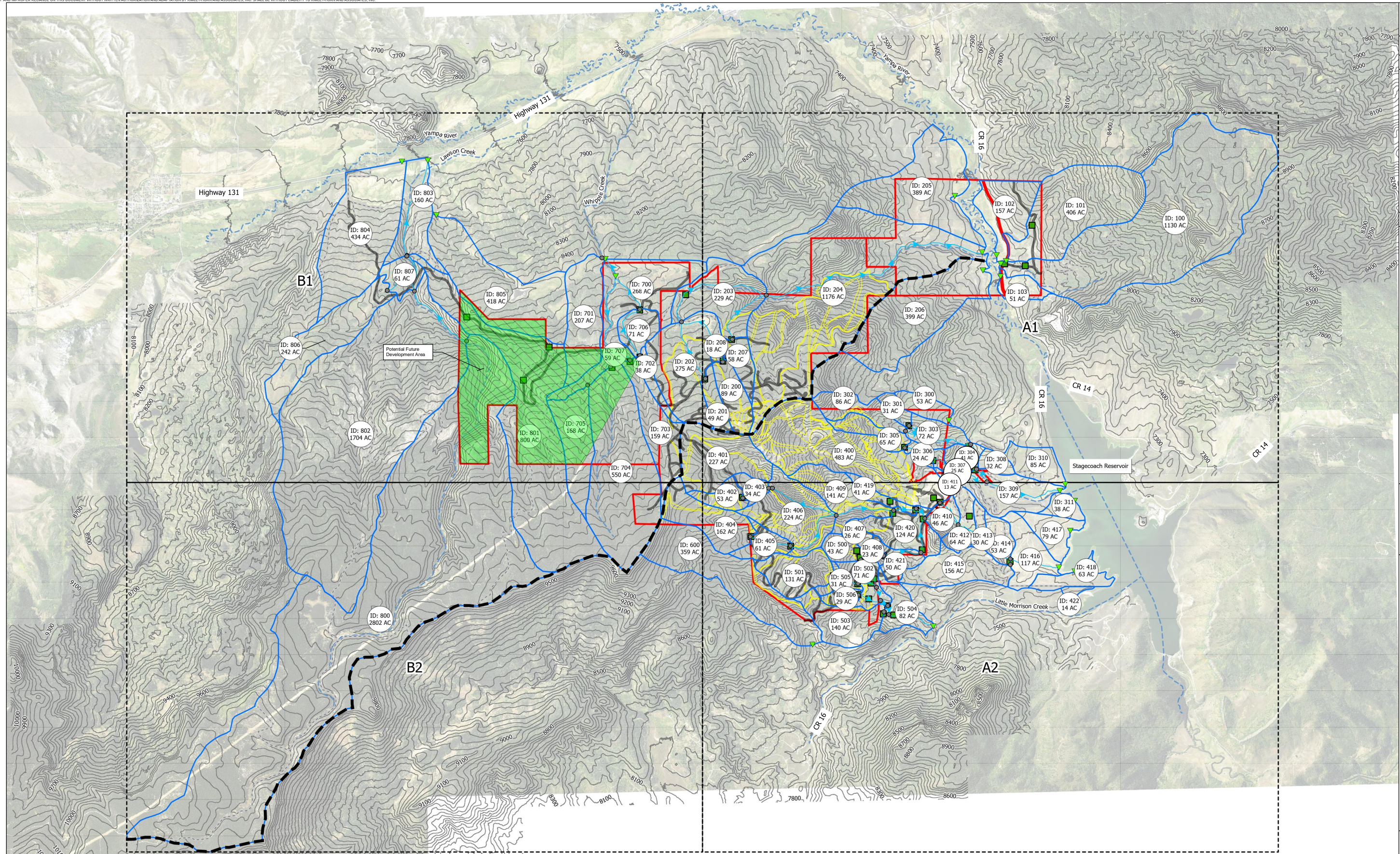
DESIGNED BY: SNM  
 DRAWN BY: TOS  
 CHECKED BY: BAH  
 DATE: 9/17/2024

**STAGECOACH  
 DRAINAGE BASIN STUDY  
 EXISTING DRAINAGE MAP**

PROJECT NO.  
19677800

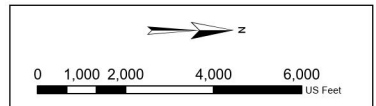
DRAWING NAME  
EX\_DRN

Sheet: B2



**Legend**

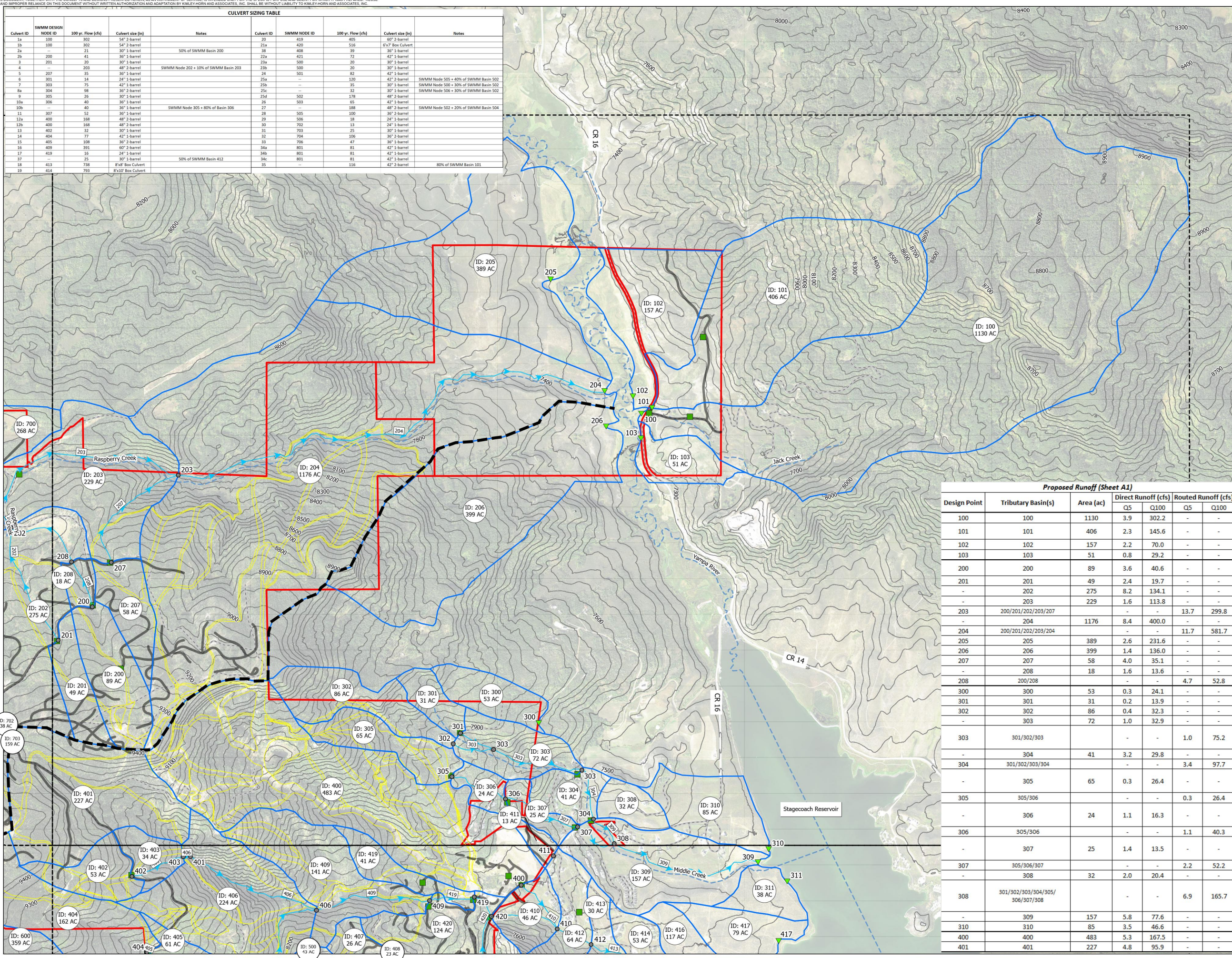
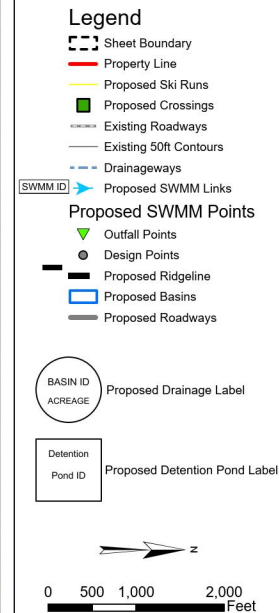
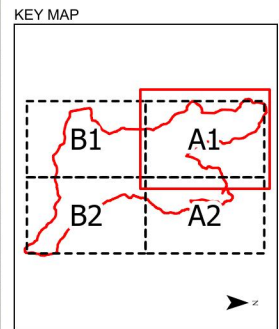
|                   |                    |                        |                      |                    |                                   |
|-------------------|--------------------|------------------------|----------------------|--------------------|-----------------------------------|
| Property Line     | Proposed Crossings | Existing 50ft Contours | Proposed SWMM Points | Proposed Ridgeline | Proposed Drainage Label           |
| Sheet Boundary    | Existing Roadways  | Proposed SWMM Links    | Outfall Points       | Proposed Basins    | Potential Future Development Area |
| Proposed Ski Runs | Drainageways       | Design Points          | Proposed Roadways    |                    |                                   |



|  |                  |
|--|------------------|
| <b>Kimley &gt;&gt; Horn</b>  |                  |
| © 2024 KIMLEY-HORN AND ASSOCIATES, INC.<br>2 North Nevada Avenue, Suite 900<br>Colorado Springs, CO (719) 453-0180 |                  |
| DESIGNED BY: SMI   | DRAWN BY: TOS    |
| CHECKED BY: BAH  | DATE: 11/22/2024 |
| <b>STAGECOACH DRAINAGE BASIN STUDY</b><br><b>PROPOSED DRAINAGE MAP - OVERVIEW</b>                                  |                  |
| PROJECT NO.<br>196778000   |                  |
| DRAWING NAME<br>PROP OVERVIEW  |                  |

**CULVERT SIZING TABLE**

| Culvert ID | SWMM DESIGN NODE ID | 100 yr. Flow (cfs) | Culvert size (ft)  | Notes                                 | Culvert ID | SWMM NODE ID | 100 yr. Flow (cfs) | Culvert size (ft) | Notes                                 |
|------------|---------------------|--------------------|--------------------|---------------------------------------|------------|--------------|--------------------|-------------------|---------------------------------------|
| 1a         | 100                 | 302                | 54" 2-barrel       |                                       | 20         | 419          | 405                | 60" 2-barrel      |                                       |
| 1b         | 100                 | 302                | 54" 2-barrel       |                                       | 21a        | 420          | 516                | 6x7' Box Culvert  |                                       |
| 2a         | 200                 | 21                 | 30" 1-barrel       | 50% of SWMM Basin 200                 | 38         | 408          | 39                 | 30" 1-barrel      |                                       |
| 2b         | 200                 | 41                 | 30" 1-barrel       |                                       | 32a        | 421          | 73                 | 42" 1-barrel      |                                       |
| 3          | 201                 | 20                 | 30" 1-barrel       |                                       | 23a        | 500          | 20                 | 30" 1-barrel      |                                       |
| 4          | 203                 | 203                | 48" 2-barrel       | SWMM Node 202 + 10% of SWMM Basin 203 | 23b        | 500          | 20                 | 30" 1-barrel      |                                       |
| 5          | 207                 | 35                 | 30" 1-barrel       |                                       | 24         | 501          | 82                 | 42" 1-barrel      |                                       |
| 6          | 301                 | 14                 | 24" 1-barrel       |                                       | 25a        | ---          | 120                | 42" 2-barrel      | SWMM Node 505 + 40% of SWMM Basin 502 |
| 7          | 303                 | 75                 | 42" 1-barrel       |                                       | 25b        | ---          | 35                 | 30" 1-barrel      | SWMM Node 500 + 30% of SWMM Basin 502 |
| 8a         | 304                 | 98                 | 36" 2-barrel       |                                       | 25c        | ---          | 32                 | 30" 1-barrel      |                                       |
| 9          | 305                 | 26                 | 30" 1-barrel       |                                       | 25d        | 502          | 178                | 48" 2-barrel      |                                       |
| 10a        | 306                 | 40                 | 36" 1-barrel       |                                       | 26         | 503          | 65                 | 42" 1-barrel      |                                       |
| 10b        | 400                 | 40                 | 36" 1-barrel       | SWMM Node 305 + 80% of Basin 306      | 27         | ---          | 188                | 48" 2-barrel      | SWMM Node 502 + 20% of SWMM Basin 504 |
| 11         | 307                 | 52                 | 36" 1-barrel       |                                       | 28         | 505          | 100                | 30" 2-barrel      |                                       |
| 12a        | 400                 | 168                | 48" 2-barrel       |                                       | 29         | 506          | 18                 | 20" 1-barrel      |                                       |
| 12b        | 400                 | 168                | 48" 2-barrel       |                                       | 30         | 702          | 13                 | 24" 1-barrel      |                                       |
| 13         | 402                 | 32                 | 30" 1-barrel       |                                       | 31         | 703          | 25                 | 30" 1-barrel      |                                       |
| 14         | 404                 | 77                 | 42" 1-barrel       |                                       | 32         | 704          | 106                | 30" 2-barrel      |                                       |
| 15         | 405                 | 108                | 36" 2-barrel       |                                       | 33         | 706          | 47                 | 36" 1-barrel      |                                       |
| 16         | 409                 | 391                | 60" 2-barrel       |                                       | 34a        | 801          | 81                 | 42" 1-barrel      |                                       |
| 17         | 419                 | 18                 | 24" 1-barrel       |                                       | 34b        | 801          | 81                 | 42" 1-barrel      |                                       |
| 37         | ---                 | 25                 | 30" 1-barrel       | 50% of SWMM Basin 412                 | 34c        | 801          | 81                 | 42" 1-barrel      |                                       |
| 18         | 413                 | 738                | 8'x8' Box Culvert  |                                       | 35         | ---          | 116                | 42" 2-barrel      | 80% of SWMM Basin 101                 |
| 19         | 414                 | 793                | 8'x10' Box Culvert |                                       |            |              |                    |                   |                                       |



**Proposed Runoff (Sheet A1)**

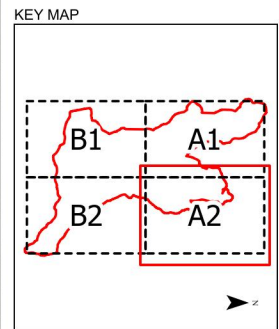
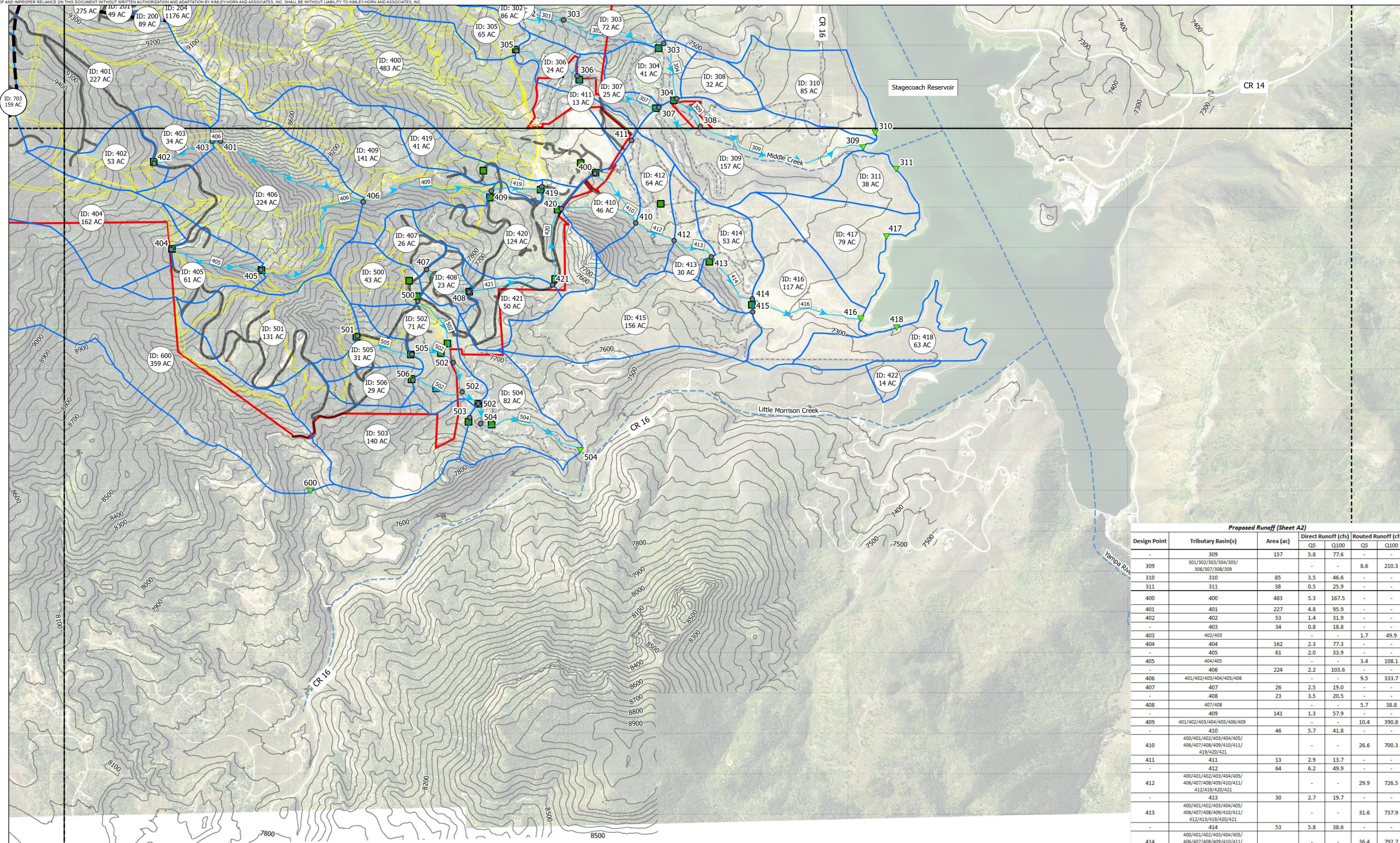
| Design Point | Tributary Basin(s)              | Area (ac) | Direct Runoff (cfs) |       | Routed Runoff (cfs) |       |
|--------------|---------------------------------|-----------|---------------------|-------|---------------------|-------|
|              |                                 |           | Q5                  | Q100  | Q5                  | Q100  |
| 100          | 100                             | 1130      | 3.9                 | 302.2 | -                   | -     |
| 101          | 101                             | 406       | 2.3                 | 145.6 | -                   | -     |
| 102          | 102                             | 157       | 2.2                 | 70.0  | -                   | -     |
| 103          | 103                             | 51        | 0.8                 | 29.2  | -                   | -     |
| 200          | 200                             | 89        | 3.6                 | 40.6  | -                   | -     |
| 201          | 201                             | 49        | 2.4                 | 19.7  | -                   | -     |
| -            | 202                             | 275       | 8.2                 | 134.1 | -                   | -     |
| -            | 203                             | 229       | 1.6                 | 113.8 | -                   | -     |
| 203          | 200/201/202/203/207             | -         | -                   | -     | 13.7                | 299.8 |
| -            | 204                             | 1176      | 8.4                 | 400.0 | -                   | -     |
| 204          | 200/201/202/203/204             | -         | -                   | -     | 11.7                | 581.7 |
| 205          | 205                             | 389       | 2.6                 | 231.6 | -                   | -     |
| 206          | 206                             | 399       | 1.4                 | 136.0 | -                   | -     |
| 207          | 207                             | 58        | 4.0                 | 35.1  | -                   | -     |
| -            | 208                             | 18        | 1.6                 | 13.6  | -                   | -     |
| 208          | 200/208                         | -         | -                   | -     | 4.7                 | 52.8  |
| 300          | 300                             | 53        | 0.3                 | 24.1  | -                   | -     |
| 301          | 301                             | 31        | 0.2                 | 13.9  | -                   | -     |
| 302          | 302                             | 86        | 0.4                 | 32.3  | -                   | -     |
| -            | 303                             | 72        | 1.0                 | 32.9  | -                   | -     |
| 303          | 301/302/303                     | -         | -                   | -     | 1.0                 | 75.2  |
| -            | 304                             | 41        | 3.2                 | 29.8  | -                   | -     |
| 304          | 301/302/303/304                 | -         | -                   | -     | 3.4                 | 97.7  |
| -            | 305                             | 65        | 0.3                 | 26.4  | -                   | -     |
| 305          | 305/306                         | -         | -                   | -     | 0.3                 | 26.4  |
| -            | 306                             | 24        | 1.1                 | 16.3  | -                   | -     |
| 306          | 305/306                         | -         | -                   | -     | 1.1                 | 40.3  |
| -            | 307                             | 25        | 1.4                 | 13.5  | -                   | -     |
| 307          | 305/306/307                     | -         | -                   | -     | 2.2                 | 52.2  |
| -            | 308                             | 32        | 2.0                 | 20.4  | -                   | -     |
| 308          | 301/302/303/304/305/306/307/308 | -         | -                   | -     | 6.9                 | 165.7 |
| -            | 309                             | 157       | 5.8                 | 77.6  | -                   | -     |
| 310          | 310                             | 85        | 3.5                 | 46.6  | -                   | -     |
| 400          | 400                             | 483       | 5.3                 | 167.5 | -                   | -     |
| 401          | 401                             | 227       | 4.8                 | 95.9  | -                   | -     |

**Kimley >>> Horn**  
 © 2024 KIMLEY-HORN AND ASSOCIATES, INC.  
 2 North Nevada Avenue, Suite 900  
 Colorado Springs, CO (719) 453-0180  
 Engineering, Planning and  
 Environmental Consultants

DESIGNED BY: SNM  
 DRAWN BY: TOS  
 CHECKED BY: BAH  
 DATE: 11/22/2024

**STAGECOACH  
 DRAINAGE BASIN STUDY  
 PROPOSED DRAINAGE MAP**

PROJECT NO.  
196778000  
 DRAWING NAME  
PROP\_DRN  
 Sheet: A1



**Legend**

- Sheet Boundary
- Property Line
- Proposed Ski Runs
- Proposed Crossings
- Existing Roadways
- Existing 50ft Contours
- Drainageways
- Proposed SWMM Links
- Proposed SWMM Points
  - Outfall Points
  - Design Points
  - Proposed Ridgeline
  - Proposed Basins
  - Proposed Roadways
- Proposed Drainage Label
- Proposed Detention Pond Label

0 500 1,000 2,000 Feet

**Proposed Runoff (Sheet A2)**

| Design Point | Tributary Basin(s)  | Area (ac) | Direct Runoff (cfs) |       | Routed Runoff (cfs) |       |
|--------------|---|-----------|---------------------|-------|---------------------|-------|
|              |   |           | Q5                  | Q100  | Q5                  | Q100  |
| -            | 309   | 157       | 5.8                 | 77.6  | -                   | -     |
| 309          | 301/302/303/304/305/306/307/308/309   | -         | -                   | -     | 8.6                 | 210.3 |
| 310          | 310   | 85        | 3.5                 | 46.6  | -                   | -     |
| 311          | 311   | 38        | 0.5                 | 25.9  | -                   | -     |
| 400          | 400   | 483       | 5.3                 | 167.5 | -                   | -     |
| 401          | 401   | 227       | 4.8                 | 95.9  | -                   | -     |
| 402          | 402   | 53        | 1.4                 | 31.9  | -                   | -     |
| -            | 403   | 34        | 0.8                 | 18.8  | -                   | -     |
| 403          | 402/403   | -         | -                   | -     | 1.7                 | 49.9  |
| 404          | 404   | 162       | 2.3                 | 77.3  | -                   | -     |
| -            | 405   | 61        | 2.0                 | 33.9  | -                   | -     |
| 405          | 404/405   | -         | -                   | -     | 3.4                 | 108.1 |
| -            | 406   | 224       | 2.2                 | 103.6 | -                   | -     |
| 406          | 401/402/403/404/405/406   | -         | -                   | -     | 9.5                 | 333.7 |
| 407          | 407   | 26        | 2.5                 | 19.0  | -                   | -     |
| -            | 408   | 23        | 3.5                 | 20.5  | -                   | -     |
| 408          | 407/408   | -         | -                   | -     | 5.7                 | 38.8  |
| -            | 409   | 141       | 1.3                 | 57.9  | -                   | -     |
| 409          | 401/402/403/404/405/406/409   | -         | -                   | -     | 10.4                | 390.8 |
| -            | 410   | 46        | 5.7                 | 41.8  | -                   | -     |
| 410          | 400/401/402/403/404/405/406/407/408/409/410/411/419/420/421                     | -         | -                   | -     | 26.6                | 700.3 |
| 411          | 411   | 13        | 2.9                 | 13.7  | -                   | -     |
| -            | 412   | 64        | 6.2                 | 49.9  | -                   | -     |
| 412          | 400/401/402/403/404/405/406/407/408/409/410/411/412/413/419/420/421             | -         | -                   | -     | 29.9                | 726.5 |
| -            | 413   | 30        | 2.7                 | 19.7  | -                   | -     |
| 413          | 400/401/402/403/404/405/406/407/408/409/410/411/412/413/419/420/421             | -         | -                   | -     | 31.6                | 737.9 |
| -            | 414   | 53        | 5.8                 | 38.6  | -                   | -     |
| 414          | 400/401/402/403/404/405/406/407/408/409/410/411/412/413/414/419/420/421         | -         | -                   | -     | 36.4                | 792.7 |
| 415          | 415   | 156       | 2.5                 | 61.2  | -                   | -     |
| -            | 416   | 117       | 1.3                 | 66.5  | -                   | -     |
| 416          | 400/401/402/403/404/405/406/407/408/409/410/411/412/413/414/415/416/419/420/421 | -         | -                   | -     | 35.9                | 751.3 |
| 417          | 417   | 79        | 0.8                 | 56.7  | -                   | -     |
| 418          | 418   | 63        | 0.7                 | 54.6  | -                   | -     |
| -            | 419   | 41        | 0.9                 | 15.5  | -                   | -     |
| 419          | 401/402/403/404/405/406/409/419   | -         | -                   | -     | 11.0                | 405.3 |
| -            | 420   | 124       | 15.7                | 104.5 | -                   | -     |
| 420          | 401/402/403/404/405/406/407/408/409/419/420/421                                 | -         | -                   | -     | 20.3                | 515.5 |
| -            | 421   | 50        | 4.5                 | 36.5  | -                   | -     |
| 421          | 407/408/421   | -         | -                   | -     | 8.6                 | 71.8  |
| 422          | 422   | 14        | 0.1                 | 9.4   | -                   | -     |
| 500          | 500   | 43        | 0.6                 | 20.4  | -                   | -     |
| 501          | 501   | 131       | 8.7                 | 82.0  | -                   | -     |
| -            | 502   | 71        | 4.4                 | 47.4  | -                   | -     |
| 502          | 500/501/502/505/506   | -         | -                   | -     | 14.8                | 178.3 |
| 503          | 503   | 140       | 2.3                 | 64.6  | -                   | -     |
| -            | 504   | 82        | 5.7                 | 48.5  | -                   | -     |
| 504          | 500/501/502/503/504/505/506   | -         | -                   | -     | 18.2                | 276.6 |
| -            | 505   | 31        | 2.1                 | 19.3  | -                   | -     |
| 505          | 501/505   | -         | -                   | -     | 10.3                | 100.3 |
| 506          | 506   | 29        | 1.4                 | 17.5  | -                   | -     |
| 600          | 600   | 359       | 1.6                 | 115.3 | -                   | -     |

**CULVERT SIZING TABLE**

| Culvert ID | SWMM DESIGN NODE ID | 100 yr. Flow (cfs) | Culvert size (in)  | Notes                                 | Culvert ID | SWMM NODE ID | 100 yr. Flow (cfs) | Culvert size (in) | Notes                                 |
|------------|---------------------|--------------------|--------------------|---------------------------------------|------------|--------------|--------------------|-------------------|---------------------------------------|
| 1a         | 100                 | 302                | 54" 2-barrel       |                                       | 20         | 419          | 405                | 60" 2-barrel      |                                       |
| 1b         | 100                 | 302                | 54" 2-barrel       |                                       | 21a        | 420          | 516                | 6x12" Box Culvert |                                       |
| 2a         | 21                  | 21                 | 36" 1-barrel       | 50% of SWMM Basin 200                 | 408        | 39           | 30" 1-barrel       |                   |                                       |
| 2b         | 200                 | 41                 | 36" 1-barrel       |                                       | 22a        | 421          | 72                 | 42" 1-barrel      |                                       |
| 3          | 201                 | 20                 | 36" 1-barrel       |                                       | 23a        | 500          | 20                 | 30" 1-barrel      |                                       |
| 4          | 203                 | 48" 2-barrel       |                    | SWMM Node 202 + 10% of SWMM Basin 203 | 500        | 20           | 30" 1-barrel       |                   |                                       |
| 5          | 207                 | 35                 | 36" 1-barrel       |                                       | 24         | 501          | 82                 | 42" 1-barrel      |                                       |
| 6          | 301                 | 14                 | 24" 1-barrel       |                                       | 25a        | -            | 120                | 42" 2-barrel      | SWMM Node 505 + 40% of SWMM Basin 502 |
| 7          | 303                 | 75                 | 42" 2-barrel       |                                       | 25b        | -            | 35                 | 30" 1-barrel      | SWMM Node 500 + 30% of SWMM Basin 502 |
| 8a         | 304                 | 98                 | 36" 2-barrel       |                                       | 25c        | -            | 32                 | 30" 1-barrel      | SWMM Node 506 + 30% of SWMM Basin 502 |
| 9          | 305                 | 26                 | 30" 1-barrel       |                                       | 25d        | -            | 178                | 48" 2-barrel      |                                       |
| 10a        | 306                 | 40                 | 36" 1-barrel       |                                       | 26         | 503          | 65                 | 42" 1-barrel      |                                       |
| 10b        | 40                  | 36" 1-barrel       |                    | SWMM Node 305 + 80% of Basin 306      | 27         | 188          | 48" 2-barrel       |                   | SWMM Node 502 + 20% of SWMM Basin 504 |
| 11         | 307                 | 52                 | 36" 1-barrel       |                                       | 28         | 505          | 100                | 36" 2-barrel      |                                       |
| 12a        | 400                 | 168                | 48" 2-barrel       |                                       | 29         | 506          | 18                 | 24" 1-barrel      |                                       |
| 12b        | 400                 | 168                | 48" 2-barrel       |                                       | 30         | 702          | 13                 | 24" 1-barrel      |                                       |
| 13         | 402                 | 32                 | 30" 1-barrel       |                                       | 31         | 703          | 25                 | 30" 1-barrel      |                                       |
| 14         | 404                 | 77                 | 42" 1-barrel       |                                       | 32         | 704          | 106                | 36" 2-barrel      |                                       |
| 15         | 405                 | 108                | 36" 2-barrel       |                                       | 33         | 706          | 47                 | 36" 1-barrel      |                                       |
| 16         | 409                 | 60" 2-barrel       |                    |                                       | 34a        | 801          | 81                 | 42" 1-barrel      |                                       |
| 17         | 419                 | 16                 | 24" 1-barrel       |                                       | 34b        | 801          | 81                 | 42" 1-barrel      |                                       |
| 37         | -                   | 25                 | 30" 1-barrel       | 50% of SWMM Basin 412                 | 34c        | 801          | 81                 | 42" 1-barrel      |                                       |
| 18         | 413                 | 738                | 8'x10' Box Culvert |                                       | 35         | -            | 116                | 42" 2-barrel      | 80% of SWMM Basin 101                 |
| 19         | 414                 | 793                | 8'x10' Box Culvert |                                       |            |              |                    |                   |                                       |

**Kimley Horn**  
 © 2024 KIMLEY-HORN AND ASSOCIATES, INC.  
 Engineering, Planning and Environmental Consultants  
 2 North Nevada Avenue, Suite 900  
 Colorado Springs, CO (719) 453-0180

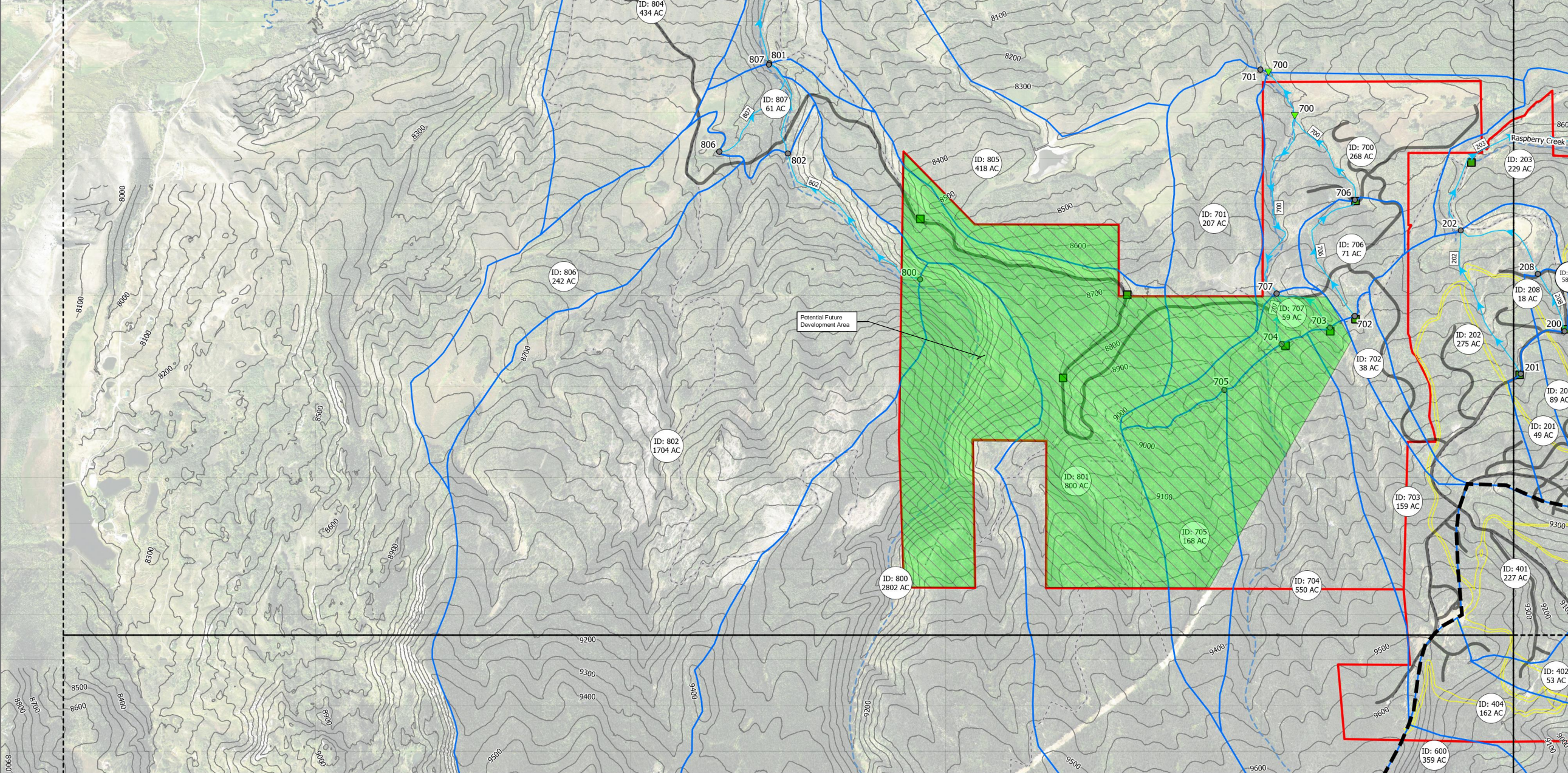
DESIGNED BY: SNM  
 DRAWN BY: TOS  
 CHECKED BY: BAH  
 DATE: 11/22/2024

**STAGECOACH  
 DRAINAGE BASIN STUDY  
 PROPOSED DRAINAGE MAP**

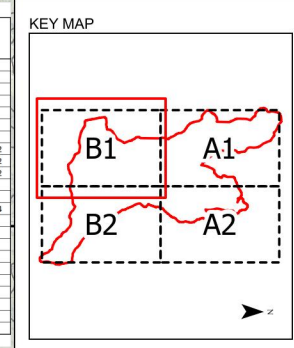
PROJECT NO.  
196778000  
 DRAWING NAME  
PROP\_DRN  
 Sheet: A2



| Proposed Runoff (Sheet B1) |                                 |           |                     |        |                     |        |
|----------------------------|---------------------------------|-----------|---------------------|--------|---------------------|--------|
| Design Point               | Tributary Basin(s)              | Area (ac) | Direct Runoff (cfs) |        | Routed Runoff (cfs) |        |
|                            |                                 |           | Q5                  | Q100   | Q5                  | Q100   |
| -                          | 202                             | 275       | 8.17                | 134.12 | -                   | -      |
| 202                        | 200/201/202/208                 | -         | -                   | -      | 11.96               | 192.09 |
| -                          | 203                             | 229       | 1.55                | 113.79 | -                   | -      |
| -                          | 700                             | 268       | 6.4                 | 167.0  | -                   | -      |
| 700                        | 700/701/702/703/704/705/706/707 | -         | -                   | -      | 7.6                 | 399.6  |
| 701                        | 701                             | 207       | 1.3                 | 80.8   | -                   | -      |
| 702                        | 702                             | 38        | 0.7                 | 13.3   | -                   | -      |
| 703                        | 703                             | 159       | 1.2                 | 25.3   | -                   | -      |
| 704                        | 704                             | 550       | 0.8                 | 106.2  | -                   | -      |
| 705                        | 705                             | 168       | 0.1                 | 24.8   | -                   | -      |
| -                          | 706                             | 71        | 1.9                 | 39.2   | -                   | -      |
| 706                        | 702/706                         | -         | -                   | -      | 2.0                 | 47.1   |
| -                          | 707                             | 59        | 0.6                 | 25.5   | -                   | -      |
| 707                        | 703/704/705/707                 | -         | -                   | -      | 2.4                 | 175.3  |
| 800                        | 800                             | 2802      | 3.9                 | 410.9  | -                   | -      |
| 801                        | 801                             | 800       | 1.1                 | 80.6   | -                   | -      |
| -                          | 802                             | 1704      | 5.9                 | 543.1  | -                   | -      |
| 802                        | 800/802                         | -         | -                   | -      | 6.6                 | 755.1  |
| -                          | 803                             | 160       | 0.9                 | 62.1   | -                   | -      |
| 803                        | 800/801/802/803/806/807         | -         | -                   | -      | 7.9                 | 916.1  |
| 804                        | 804                             | 434       | 2.6                 | 150.3  | -                   | -      |
| 805                        | 805                             | 418       | 1.4                 | 133.9  | -                   | -      |
| 806                        | 806                             | 242       | 1.4                 | 81.6   | -                   | -      |
| -                          | 807                             | 61        | 1.4                 | 39.1   | -                   | -      |
| 807                        | 800/801/802/806                 | -         | -                   | -      | 7.9                 | 891.5  |



| CULVERT SIZING TABLE |                     |                    |                      |                                       |            |                     |                    |                     |                                       |
|----------------------|---------------------|--------------------|----------------------|---------------------------------------|------------|---------------------|--------------------|---------------------|---------------------------------------|
| Culvert ID           | SWMM DESIGN NODE ID | 100 yr. Flow (cfs) | Culvert size (in)    | Notes                                 | Culvert ID | SWMM DESIGN NODE ID | 100 yr. Flow (cfs) | Culvert size (in)   | Notes                                 |
| 1a                   | 100                 | 302                | 54" 2-barrel         |                                       | 20         | 419                 | 405                | 60" 2-barrel        |                                       |
| 1b                   | 100                 | 302                | 54" 2-barrel         |                                       | 21a        | 420                 | 516                | 6" x 7' Box Culvert |                                       |
| 2a                   | 200                 | 21                 | 30" 1-barrel         | 50% of SWMM Basin 200                 | 38         | 408                 | 39                 | 36" 1-barrel        |                                       |
| 2b                   | 200                 | 41                 | 30" 1-barrel         |                                       | 23a        | 421                 | 72                 | 42" 1-barrel        |                                       |
| 3                    | 201                 | 20                 | 30" 1-barrel         |                                       | 23a        | 500                 | 20                 | 30" 1-barrel        |                                       |
| 4                    | 203                 | 203                | 48" 2-barrel         | SWMM Node 202 + 10% of SWMM Basin 203 | 23b        | 500                 | 20                 | 30" 1-barrel        |                                       |
| 5                    | 207                 | 35                 | 36" 1-barrel         |                                       | 24         | 501                 | 82                 | 42" 1-barrel        |                                       |
| 6                    | 301                 | 14                 | 24" 1-barrel         |                                       | 25a        | ---                 | 120                | 42" 2-barrel        | SWMM Node 505 + 40% of SWMM Basin 502 |
| 7                    | 303                 | 75                 | 42" 1-barrel         |                                       | 25b        | ---                 | 35                 | 30" 1-barrel        | SWMM Node 505 + 30% of SWMM Basin 502 |
| 8a                   | 304                 | 98                 | 36" 1-barrel         |                                       | 25c        | ---                 | 32                 | 30" 1-barrel        | SWMM Node 506 + 30% of SWMM Basin 502 |
| 9                    | 305                 | 26                 | 30" 1-barrel         |                                       | 25d        | ---                 | 178                | 48" 2-barrel        | SWMM Node 506 + 30% of SWMM Basin 502 |
| 10a                  | 306                 | 40                 | 36" 1-barrel         |                                       | 26         | 503                 | 65                 | 42" 1-barrel        |                                       |
| 10b                  | 400                 | 40                 | 36" 1-barrel         | SWMM Node 305 + 80% of Basin 306      | 27         | ---                 | 188                | 48" 2-barrel        | SWMM Node 502 + 20% of SWMM Basin 501 |
| 11                   | 307                 | 52                 | 36" 1-barrel         |                                       | 28         | 505                 | 100                | 36" 2-barrel        |                                       |
| 12a                  | 400                 | 168                | 48" 2-barrel         |                                       | 29         | 506                 | 18                 | 24" 1-barrel        |                                       |
| 12b                  | 400                 | 168                | 48" 2-barrel         |                                       | 30         | 702                 | 13                 | 24" 1-barrel        |                                       |
| 13                   | 402                 | 32                 | 30" 1-barrel         |                                       | 31         | 703                 | 25                 | 30" 1-barrel        |                                       |
| 14                   | 404                 | 77                 | 42" 1-barrel         |                                       | 32         | 704                 | 106                | 36" 2-barrel        |                                       |
| 15                   | 405                 | 108                | 36" 2-barrel         |                                       | 33         | 706                 | 47                 | 36" 1-barrel        |                                       |
| 16                   | 409                 | 391                | 60" 2-barrel         |                                       | 34a        | 801                 | 81                 | 42" 1-barrel        |                                       |
| 17                   | 418                 | 16                 | 24" 1-barrel         |                                       | 34b        | 801                 | 81                 | 42" 1-barrel        |                                       |
| 18                   | ---                 | 25                 | 30" 1-barrel         | 50% of SWMM Basin 412                 | 34c        | 801                 | 81                 | 42" 1-barrel        |                                       |
| 19                   | 413                 | 738                | 8" x 10' Box Culvert |                                       | 35         | ---                 | 116                | 42" 2-barrel        | 80% of SWMM Basin 101                 |
|                      | 414                 | 793                | 8" x 10' Box Culvert |                                       |            |                     |                    |                     |                                       |



**Legend**

- Sheet Boundary
- Property Line
- Proposed Ski Runs
- Proposed Crossings
- Existing Roadways
- Existing 50ft Contours
- Drainageways
- Proposed SWMM Links
- Proposed SWMM Points
- Outfall Points
- Design Points
- Proposed Ridgeline
- Proposed Basins
- Proposed Roadways
- Proposed Drainage Label
- Proposed Detention Pond Label
- Potential Future Development Area

Scale: 0 500 1,000 2,000 Feet

**Kimley-Horn**  
 © 2024 KIMLEY-HORN AND ASSOCIATES, INC.  
 Engineering, Planning and Environmental Consultants  
 2 North Nevada Avenue, Suite 900  
 Colorado Springs, CO (719) 453-0180

DESIGNED BY: SNM  
 DRAWN BY: TOS  
 CHECKED BY: BAH  
 DATE: 1/12/2024

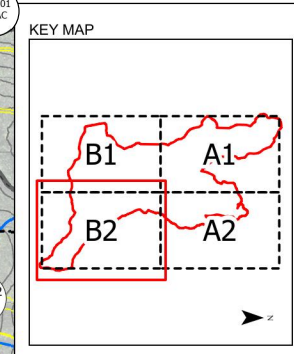
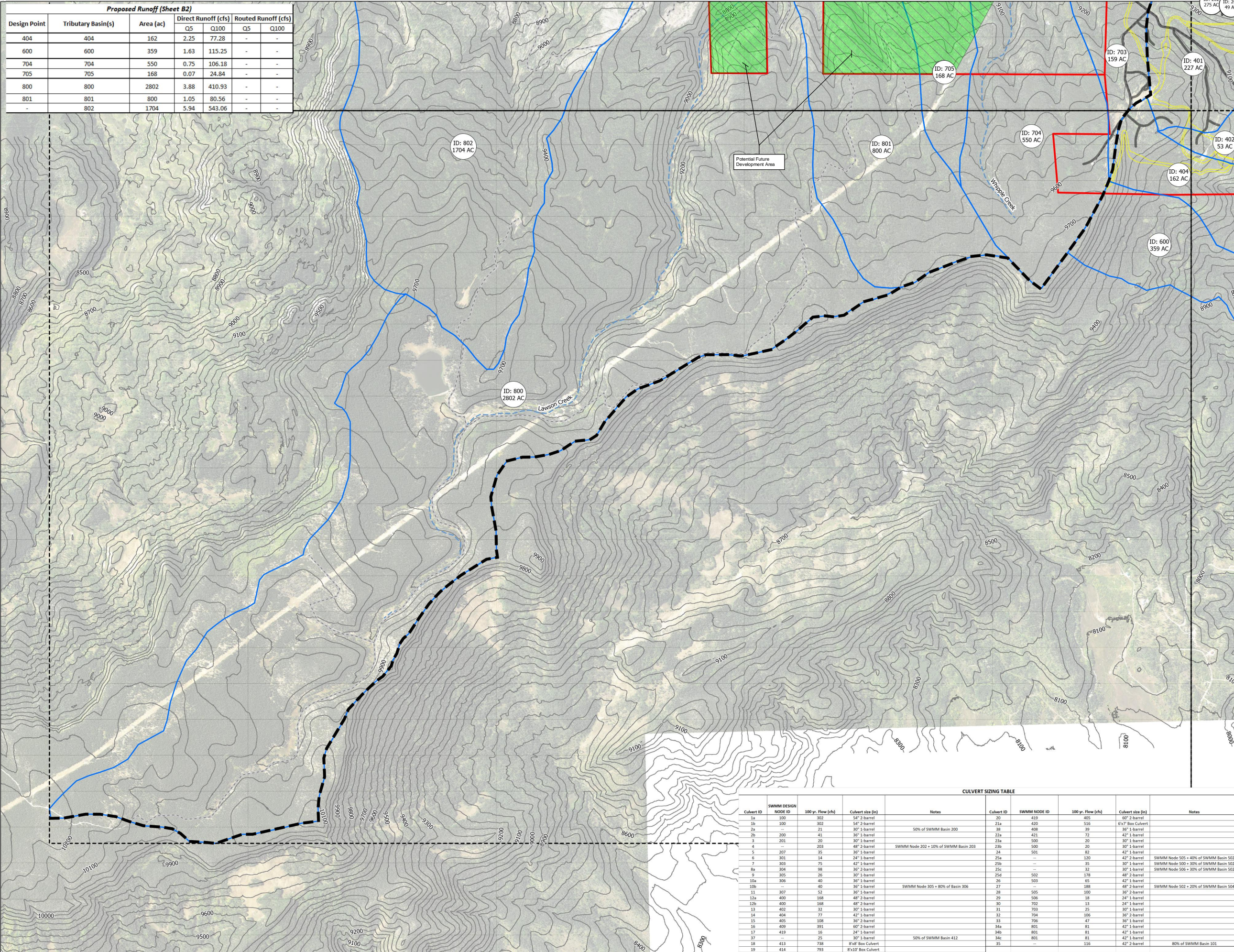
**STAGECOACH  
 DRAINAGE BASIN STUDY  
 PROPOSED DRAINAGE MAP**

PROJECT NO.  
196778000

DRAWING NAME  
PROP\_DRN

Sheet: B1

| Proposed Runoff (Sheet B2) |                    |           |                     |        |                     |      |
|----------------------------|--------------------|-----------|---------------------|--------|---------------------|------|
| Design Point               | Tributary Basin(s) | Area (ac) | Direct Runoff (cfs) |        | Routed Runoff (cfs) |      |
|                            |                    |           | Q5                  | Q100   | Q5                  | Q100 |
| 404                        | 404                | 162       | 2.25                | 77.28  | -                   | -    |
| 600                        | 600                | 359       | 1.63                | 115.25 | -                   | -    |
| 704                        | 704                | 550       | 0.75                | 106.18 | -                   | -    |
| 705                        | 705                | 168       | 0.07                | 24.84  | -                   | -    |
| 800                        | 800                | 2802      | 3.88                | 410.93 | -                   | -    |
| 801                        | 801                | 800       | 1.05                | 80.56  | -                   | -    |
| -                          | 802                | 1704      | 5.94                | 543.06 | -                   | -    |



**Legend**

- Sheet Boundary
- Property Line
- Proposed Ski Runs
- Proposed Crossings
- Existing Roadways
- Existing 50ft Contours
- Drainageways
- Proposed SWMM Links
- Proposed SWMM Points
- Outfall Points
- Design Points
- Proposed Ridgeline
- Proposed Basins
- Proposed Roadways
- Proposed Drainage Label
- Proposed Detention Pond Label
- Potential Future Development Area

Scale: 0 500 1,000 2,000 Feet

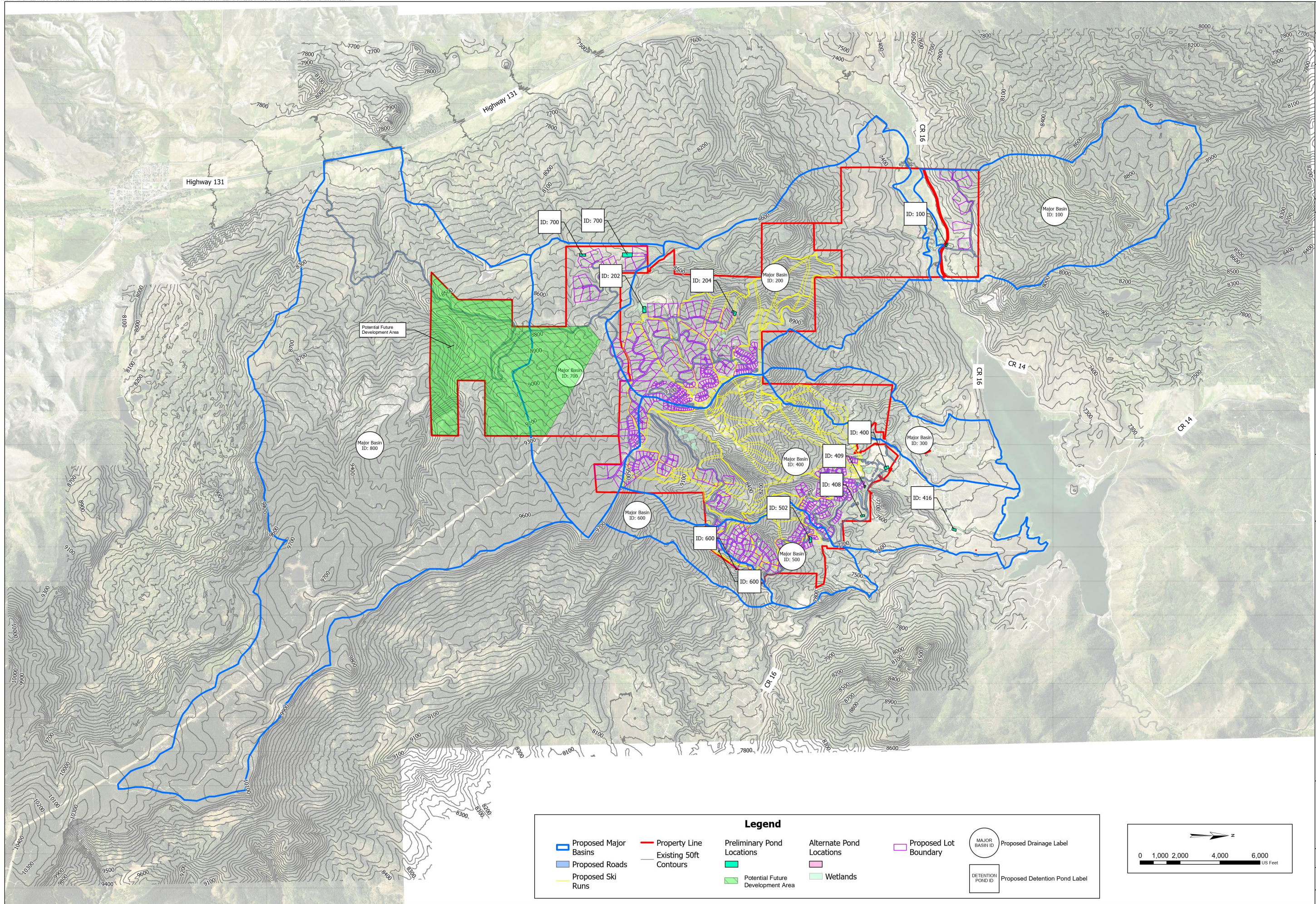
**Kimley-Horn**  
 © 2024 KIMLEY-HORN AND ASSOCIATES, INC.  
 Engineering, Planning and Environmental Consultants  
 2 North Nevada Avenue, Suite 900  
 Colorado Springs, CO (719) 453-0180

DESIGNED BY: SNM  
 DRAWN BY: TOS  
 CHECKED BY: BAH  
 DATE: 1/12/2024

**STAGECOACH  
 DRAINAGE BASIN STUDY  
 PROPOSED DRAINAGE MAP**

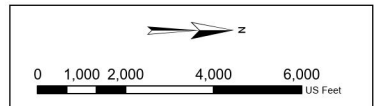
PROJECT NO.  
196778000  
 DRAWING NAME  
PROP\_DRN  
 Sheet: B2

| CULVERT SIZING TABLE |                     |                    |                   |                                       |            |                     |                    |                                       |                                       |
|----------------------|---------------------|--------------------|-------------------|---------------------------------------|------------|---------------------|--------------------|---------------------------------------|---------------------------------------|
| Culvert ID           | SWMM DESIGN NODE ID | 100 yr. Flow (cfs) | Culvert size (in) | Notes                                 | Culvert ID | SWMM DESIGN NODE ID | 100 yr. Flow (cfs) | Culvert size (in)                     | Notes                                 |
| 1a                   | 100                 | 302                | 54" 2-barrel      |                                       | 20         | 419                 | 405                | 60" 2-barrel                          |                                       |
| 1b                   | 100                 | 302                | 54" 2-barrel      |                                       | 21a        | 420                 | 516                | 6x7' Box Culvert                      |                                       |
| 2a                   | 21                  | 21                 | 30" 1-barrel      | 50% of SWMM Basin 200                 | 21         | 408                 | 39                 | 36" 1-barrel                          |                                       |
| 2b                   | 200                 | 41                 | 36" 1-barrel      |                                       | 22a        | 421                 | 72                 | 42" 1-barrel                          |                                       |
| 3                    | 201                 | 20                 | 30" 1-barrel      |                                       | 23a        | 500                 | 20                 | 30" 1-barrel                          |                                       |
| 4                    | 203                 | 203                | 48" 2-barrel      | SWMM Node 202 + 10% of SWMM Basin 203 | 23b        | 500                 | 20                 | 30" 1-barrel                          |                                       |
| 5                    | 207                 | 35                 | 36" 1-barrel      |                                       | 24         | 501                 | 82                 | 42" 1-barrel                          |                                       |
| 6                    | 301                 | 14                 | 24" 1-barrel      |                                       | 25a        | 120                 | 120                | 42" 2-barrel                          | SWMM Node 505 + 40% of SWMM Basin 502 |
| 7                    | 303                 | 75                 | 42" 1-barrel      |                                       | 25b        | 35                  | 30" 1-barrel       | SWMM Node 500 + 30% of SWMM Basin 502 |                                       |
| 8a                   | 304                 | 98                 | 30" 2-barrel      |                                       | 26         | 192                 | 32                 | 30" 1-barrel                          | SWMM Node 506 + 30% of SWMM Basin 502 |
| 9                    | 305                 | 26                 | 30" 1-barrel      |                                       | 25d        | 502                 | 178                | 48" 2-barrel                          |                                       |
| 10a                  | 306                 | 40                 | 36" 1-barrel      |                                       | 26         | 503                 | 65                 | 42" 1-barrel                          |                                       |
| 10b                  | 40                  | 40                 | 36" 1-barrel      |                                       | 27         | 48                  | 288                | 48" 2-barrel                          |                                       |
| 11                   | 307                 | 52                 | 36" 1-barrel      | SWMM Node 305 + 80% of Basin 306      | 28         | 505                 | 100                | 36" 2-barrel                          | SWMM Node 502 + 20% of SWMM Basin 504 |
| 12a                  | 400                 | 168                | 48" 2-barrel      |                                       | 29         | 506                 | 18                 | 24" 1-barrel                          |                                       |
| 12b                  | 400                 | 168                | 48" 2-barrel      |                                       | 30         | 702                 | 13                 | 24" 1-barrel                          |                                       |
| 13                   | 402                 | 32                 | 30" 1-barrel      |                                       | 31         | 703                 | 25                 | 30" 1-barrel                          |                                       |
| 14                   | 404                 | 77                 | 42" 1-barrel      |                                       | 32         | 704                 | 106                | 36" 2-barrel                          |                                       |
| 15                   | 405                 | 108                | 36" 2-barrel      |                                       | 33         | 706                 | 47                 | 36" 1-barrel                          |                                       |
| 16                   | 409                 | 391                | 60" 2-barrel      |                                       | 34a        | 801                 | 81                 | 42" 1-barrel                          |                                       |
| 17                   | 419                 | 16                 | 34" 1-barrel      |                                       | 34b        | 801                 | 81                 | 42" 1-barrel                          |                                       |
| 37                   | -                   | 25                 | 30" 1-barrel      | 50% of SWMM Basin 412                 | 34c        | 801                 | 81                 | 42" 1-barrel                          |                                       |
| 18                   | 413                 | 738                | 8x10' Box Culvert |                                       | 35         | -                   | 116                | 42" 2-barrel                          | 80% of SWMM Basin 101                 |
| 19                   | 414                 | 793                | 8x10' Box Culvert |                                       |            |                     |                    |                                       |                                       |



**Legend**

|                       |                        |                                   |                          |                               |                         |
|-----------------------|------------------------|-----------------------------------|--------------------------|-------------------------------|-------------------------|
| Proposed Major Basins | Property Line          | Preliminary Pond Locations        | Alternate Pond Locations | Proposed Lot Boundary         | Proposed Drainage Label |
| Proposed Roads        | Existing 50ft Contours | Potential Future Development Area | Wetlands                 | Proposed Detention Pond Label |                         |
| Proposed Ski Runs     |                        |                                   |                          |                               |                         |



**Kimley»Horn**

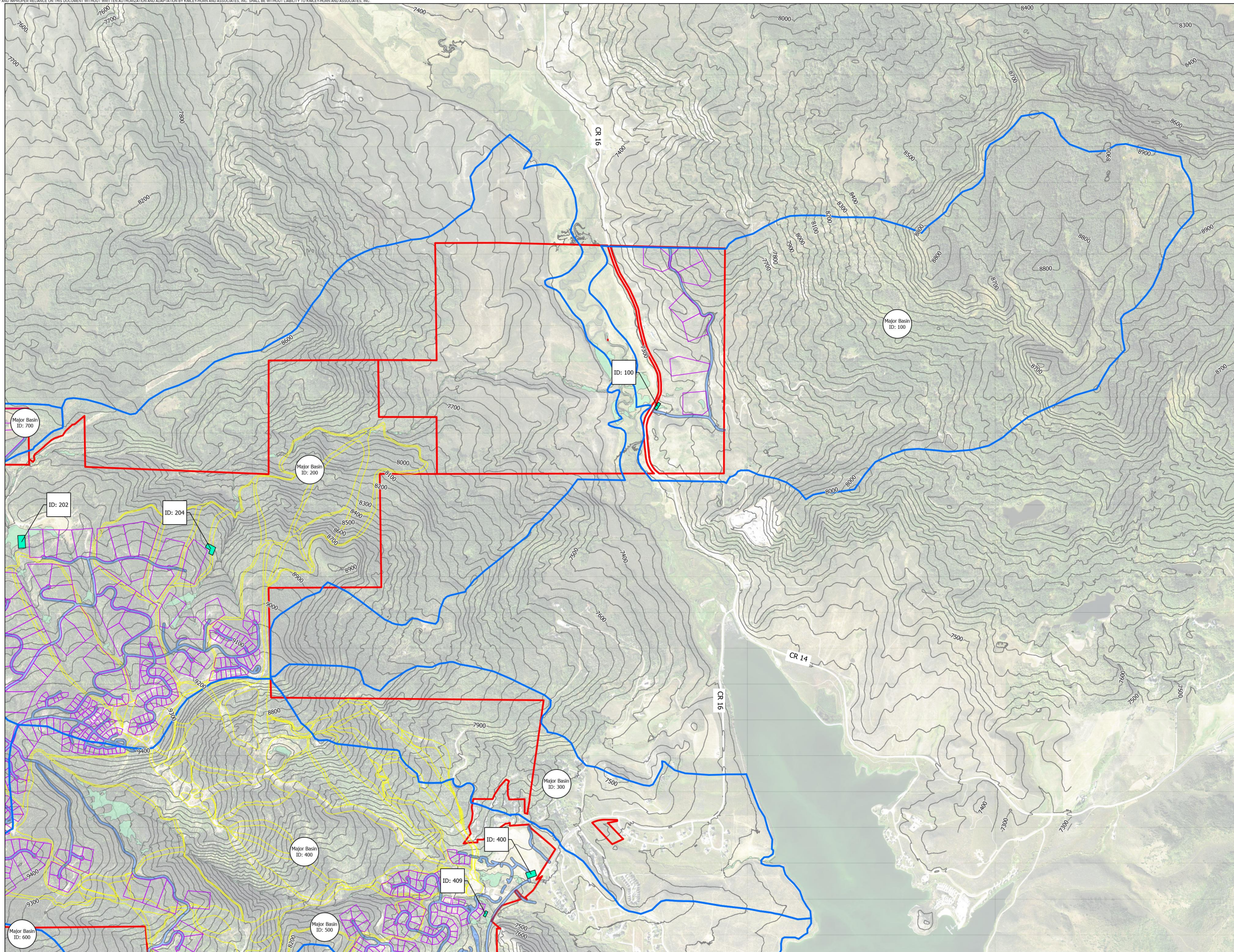
© 2024 KIMLEY-HORN AND ASSOCIATES, INC.  
 2 North Nevada Avenue, Suite 900  
 Colorado Springs, CO (719) 453-0180

DESIGNED BY: SNM  
 DRAWN BY: TOS  
 CHECKED BY: BAH  
 DATE: 11/22/2024

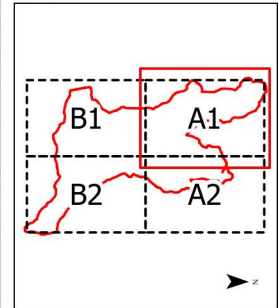
**STAGECOACH  
 DRAINAGE BASIN STUDY  
 PROPOSED POND LOCATION MAP - OVERVIEW**

PROJECT NO.  
196778000

DRAWING NAME  
PROP POND OVERVIEW



KEY MAP



Legend

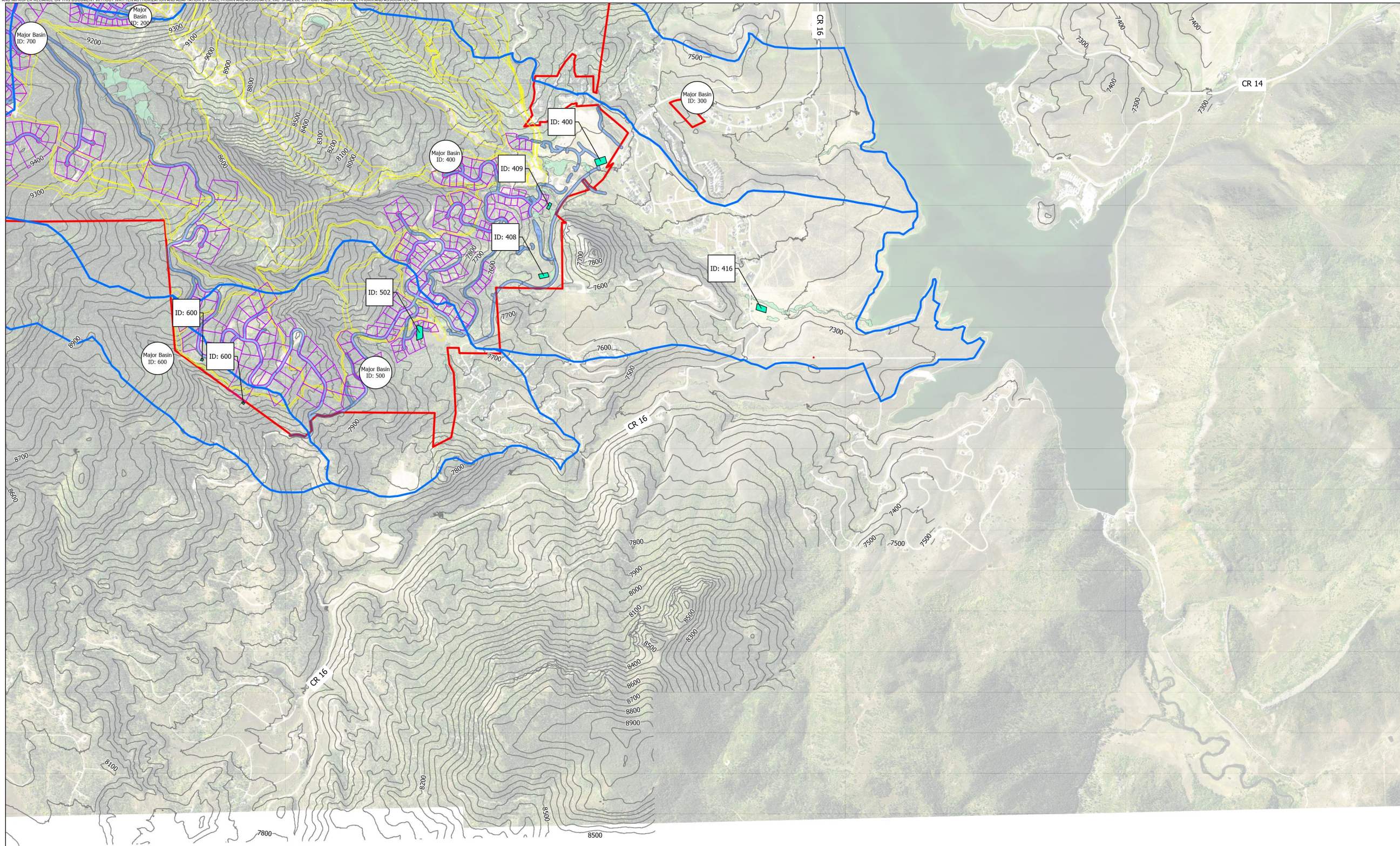
- Proposed Roads
  - Proposed Ski Runs
  - Property Line
  - Existing 50ft Contours
  - Proposed Major Basins
  - Preliminary Pond Locations
  - Alternate Pond Locations
  - Wetlands
  - Proposed Lot Boundary
- MAJOR BASIN ID Proposed Drainage Label
- DETECTION POND ID Proposed Detention Pond Label
- 0 500 1,000 2,000 Feet

**Kimley»Horn**  
 © 2024 KIMLEY-HORN AND ASSOCIATES, INC.  
 Engineering, Planning and Environmental Consultants  
 2 North Nevada Avenue, Suite 900  
 Colorado Springs, CO (719) 453-0180

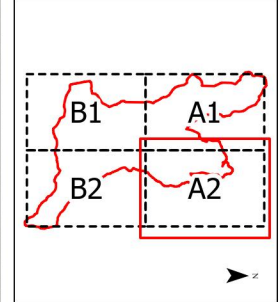
DESIGNED BY: SNM  
 DRAWN BY: TOS  
 CHECKED BY: BAH  
 DATE: 11/22/2024

STAGECOACH  
 DRAINAGE BASIN STUDY  
 PROPOSED POND LOCATION MAP

PROJECT NO.  
 196778000  
 DRAWING NAME  
 PROP\_POND  
 Sheet: A1



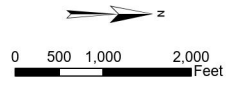
KEY MAP



Legend

- Proposed Roads
- Proposed Ski Runs
- Property Line
- Existing 50ft Contours
- Proposed Major Basins
- Preliminary Pond Locations
- Alternate Pond Locations
- Wetlands
- Proposed Lot Boundary

- MAJOR BASIN ID Proposed Drainage Label
- DETENTION POND ID Proposed Detention Pond Label



**Kimley»Horn**

© 2024 KIMLEY-HORN AND ASSOCIATES, INC.  
 Engineering, Planning and Environmental Consultants  
 2 North Nevada Avenue, Suite 900  
 Colorado Springs, CO (719) 453-0180

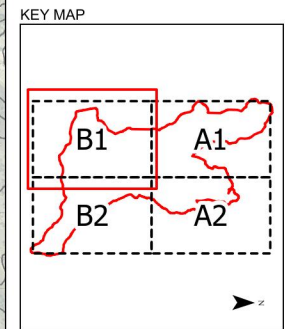
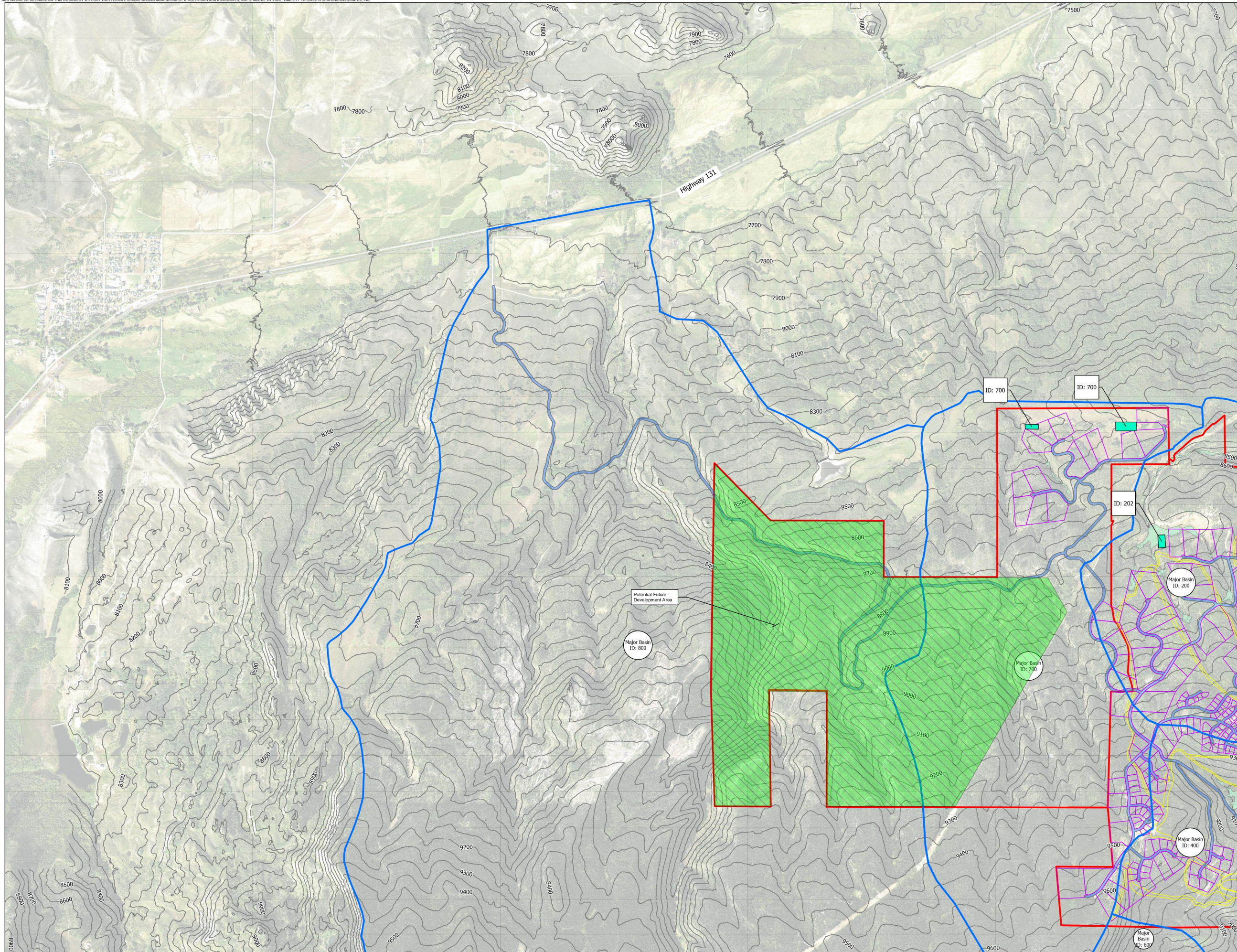
DESIGNED BY: SNM  
 DRAWN BY: TOS  
 CHECKED BY: BAH  
 DATE: 11/22/2024

STAGECOACH  
 DRAINAGE BASIN STUDY  
 PROPOSED POND LOCATION MAP

PROJECT NO.  
196778000

DRAWING NAME  
PROP\_POND

Sheet: A2



**Legend**

- Proposed Roads
- Proposed Ski Runs
- Property Line
- Existing 50ft Contours
- Proposed Major Basins
- Preliminary Pond Locations
- Alternate Pond Locations
- Wetlands
- Proposed Lot Boundary
- Potential Future Development Area
- MAJOR BASIN ID Proposed Drainage Label
- DETECTION POND ID Proposed Detention Pond Label

0 500 1,000 2,000 Feet

|                  |                    |
|------------------|--------------------|
| DESIGNED BY: SNM | <b>Kimley»Horn</b> |
| DRAWN BY: TOS    |                    |
| CHECKED BY: BAH  |                    |
| DATE: 11/22/2024 |                    |

© 2024 KIMLEY-HORN AND ASSOCIATES, INC.  
2 North Nevada Avenue, Suite 900  
Colorado Springs, CO (719) 453-0180  
Engineering, Planning and Environmental Consultants

STAGECOACH  
DRAINAGE BASIN STUDY  
PROPOSED POND LOCATION MAP

PROJECT NO.  
196778000  
DRAWING NAME  
PROP\_POND  
Sheet: B1

