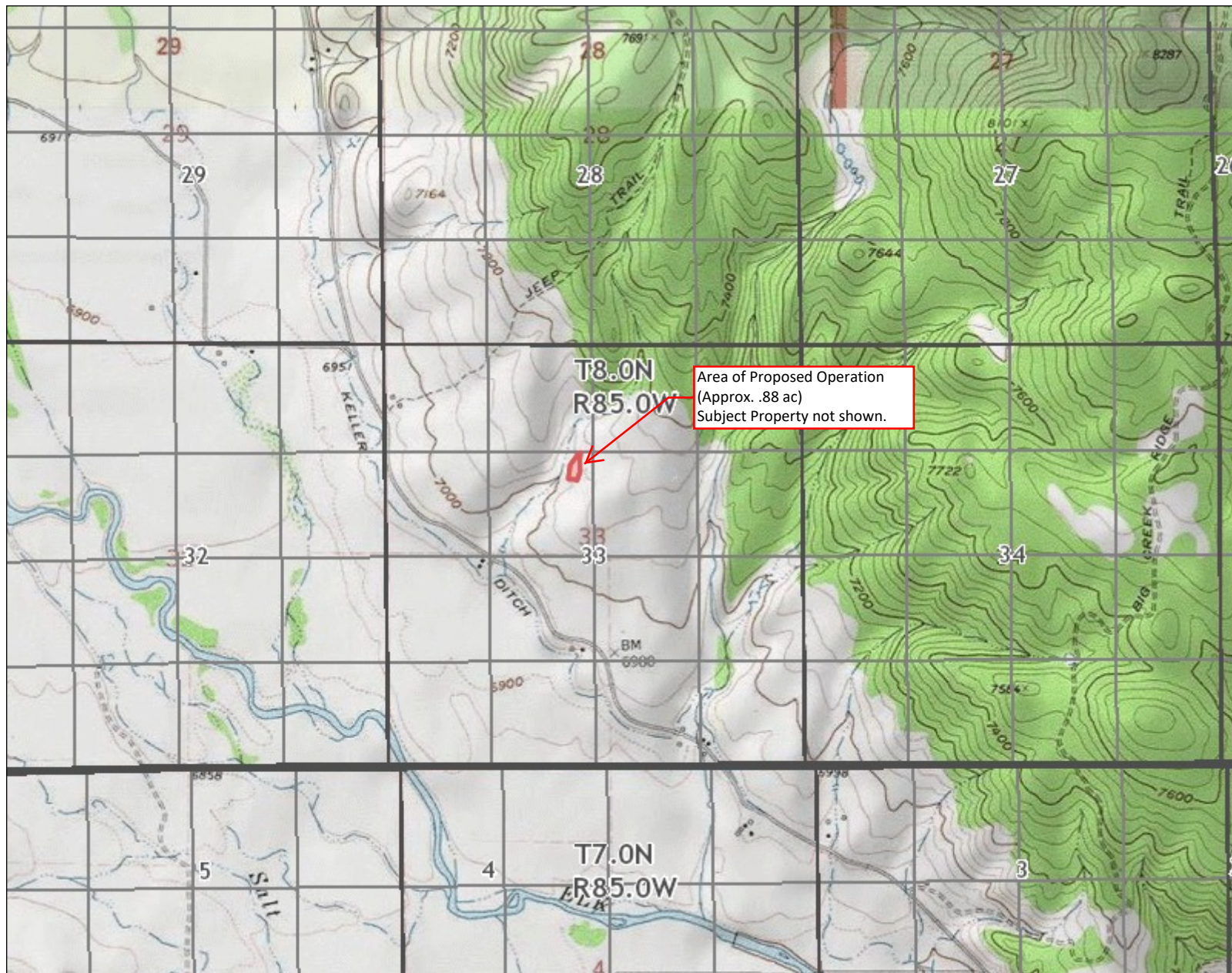




Sanders Gravel Pit (County SUP): Exhibit 6(e) Topographic, Vegetation, Water Resources, and Wetlands Maps



Area of Proposed Operation
(Approx. .88 ac)
Subject Property not shown.

Legend

- Township
- Section
- Q40
- County

Location



Notes

3,813 0 1,907 3,813 Feet

1: 22,881



This product is for informational purposes and may not have been prepared for, or be suitable for legal, engineering, or surveying purposes. Users of this information should review or consult the primary data and information sources to ascertain the usability of the information.

Date Prepared: 7/2/2021 11:51:44 AM



Celebrating 20+ years of Partnership
Multi-Resolution Land Characteristics
Consortium

Contents

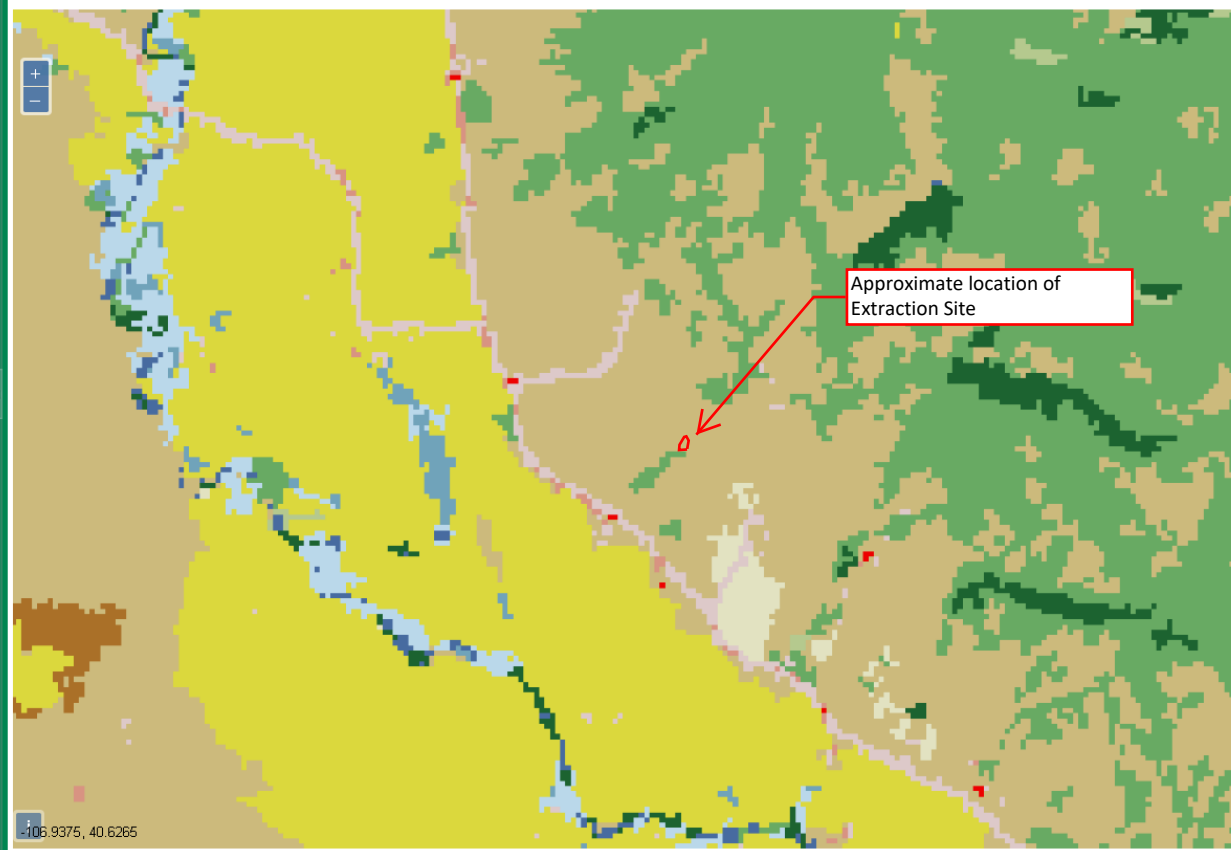
Legend

All

New Map Window

- Dataset
 - Hydrography
 - ☒ Watersheds HUCS
 - NLCD Impervious Surface
 - NLCD Impervious Descriptor
 - NLCD Tree Canopy
 - NLCD Land Cover
 - ☒ 2019 CONUS Land Cover
 - ☐ 2016 CONUS Land Cover
 - ☐ CONUS Land Cover Change Index
 - ☐ 2013 CONUS Land Cover
 - ☐ 2011 CONUS Land Cover
 - ☐ 2008 CONUS Land Cover
 - ☐ 2006 CONUS Land Cover
 - ☐ 2004 CONUS Land Cover
 - ☐ 2001 CONUS Land Cover
 - ☐ 2016 AK Land Cover
 - ☐ 2011 AK Land Cover
 - ☐ 2001 AK Land Cover
 - ☐ 2011 - 2016 AK Change Pixels
 - ☐ 2001 - 2016 AK Change Pixels
 - ☐ 2001 - 2011 AK Change Pixels
 - ☒ 2010 HI Land Cover
 - ☒ 2005 HI Land Cover
 - ☐ 2001 HI Land Cover
 - ☒ 2010 PR Land Cover
 - ☐ 2001 PR Land Cover
 - Orthoimagery
 - Boundaries
 - ☒ National Atlas States
 - ☒ National Atlas Counties 2001
 - ☐ Historic Mapping Zones
 - Base Layers
 - ☒ Stamen Terrain

All Hydrography Watersheds HUCS



Tools








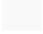













Data Download

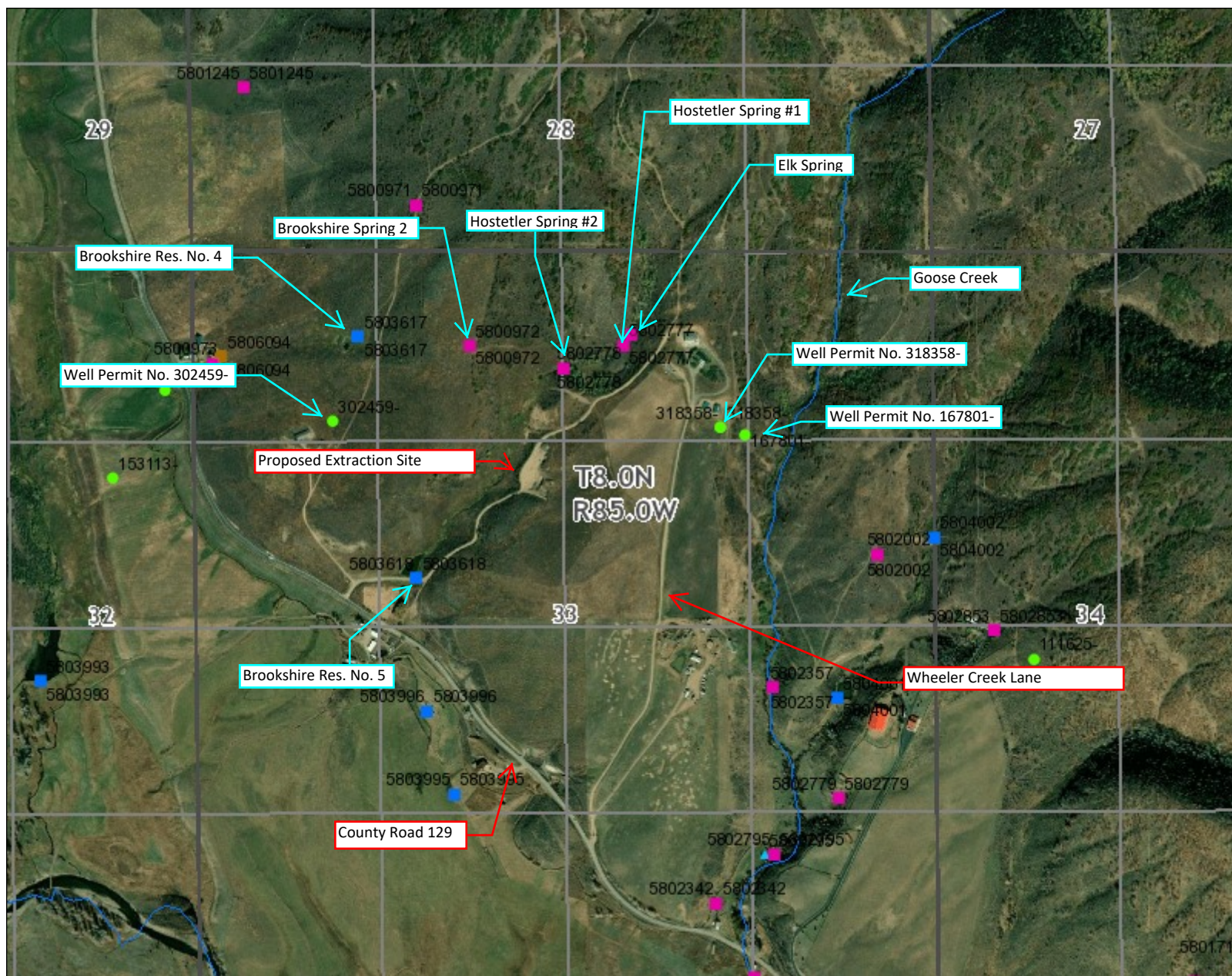
Feature Info

Spatial Locking Tool

Arrange Windows Tool

Legend:

	Open Water (11)
	Perennial Ice/Snow/ (12)
	Developed, Open Space (21)
	Developed, Low Intensity (22)
	Developed, Medium Intensity (23)
	Developed, High Intensity (24)
	Barren Land (Rock/Sand/Clay) (31)
	Unconsolidated Shore (32)
	Deciduous Forest (41)
	Evergreen Forest (42)
	Mixed Forest (43)
	Dwarf Scrub(AK only) (51)
	Shrub/Scrub (52)
	Grasslands/Herbaceous (71)
	Sedge/Herbaceous(AK only) (72)
	Lichens (Ak only) (73)
	Moss (AK only) (74)
	Pasture/Hay (81)
	Cultivated Crops (82)
	Woody Wetlands (90)
	Emergent Herbaceous Wetlands (95)



Legend

All Structures

- Surface Water
- Ground Water
- Reservoir
- Minimum Flow
- Other

- Surface Water
- Ground Water
- Reservoir
- Minimum Flow
- Other
- All Points of Interest
- Well Constructed
- Final Permit
- Geophysical Log
- Confluence Point
- Source Water Route Framework

Location



Notes

2,151 0 1,076 2,151 Feet

1: 12,906



This product is for informational purposes and may not have been prepared for, or be suitable for legal, engineering, or surveying purposes. Users of this information should review or consult the primary data and information sources to ascertain the usability of the information.

Date Prepared: 7/2/2021 3:17:49 PM



National Wetlands Inventory

surface waters and wetlands

[ABOUT](#)[GET DATA](#)[PRINT](#)[FIND LOCATION](#)[BASEMAPS >](#)[MAP LAYERS >](#)

- ☒ Wetlands 1 ?
- ☒ Riparian 1 ?
- ☐ Riparian Mapping Areas 1 ?
- ☒ Data Source 1 ?
 - ☐ Source Type
 - ☐ Image Scale
 - ☐ Image Year
- ☐ Areas of Interest ?
- ☐ FWS Managed Lands 1 ?
- ☐ Historic Wetland Data 1 ?

[Measure](#)[LEGEND](#)

Wetlands

- Estuarine and Marine Deepwater
- Estuarine and Marine Wetland
- Freshwater Emergent Wetland
- Freshwater Forested/Shrub Wetland
- Freshwater Pond
- Lake
- Other
- Riverine

Riparian

- Forested/Shrub
- Herbaceous

