

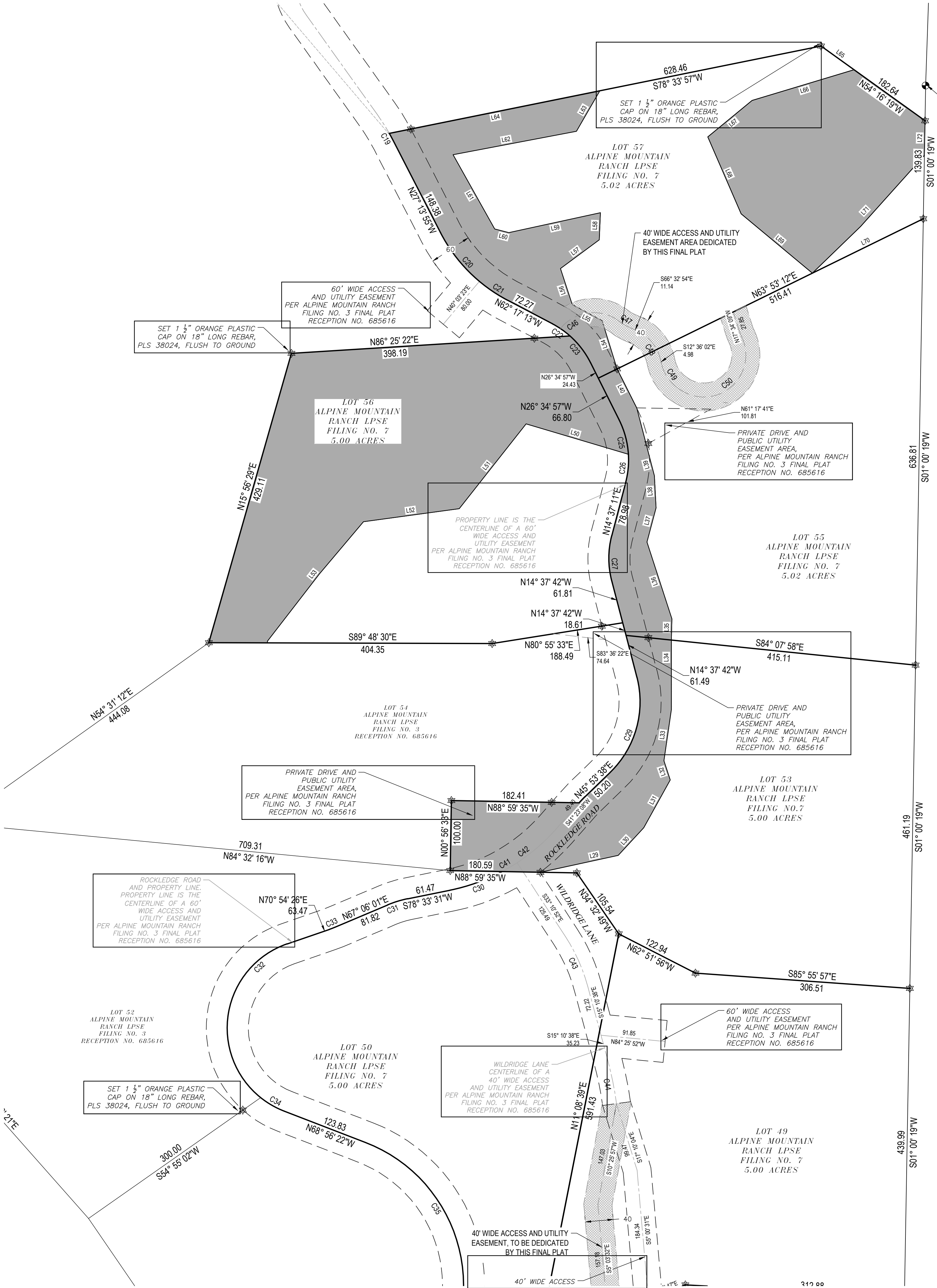
# ALPINE MOUNTAIN RANCH LAND PRESERVATION SUBDIVISION EXEMPTION AMENDMENT NO. 7

A REPLAT OF LOTS 46, 47, 48, 49, 50, 53, 55, AND 57  
LAND PRESERVATION SUBDIVISION EXEMPTION AMENDMENT NO. 3  
LOCATED IN SECTIONS 26, 34, AND 35, TOWNSHIP 6 NORTH, AND SECTIONS 2  
AND 3, TOWNSHIP 5 NORTH, ALL IN RANGE 84 WEST OF THE 6TH P.M., ROUTT  
COUNTY, COLORADO



440 S. Lincoln Ave, Suite 4B  
P.O. Box 775966  
Steamboat Springs, CO 80487  
(970)871-6772  
matthew@fourpointse.com

No.	DATE	REVISIONS



WEST 1/4TH OF SECTION 35,  
NE CORNER OF LOT 4 PER THE  
1878 SURVEY OF T5N, R84W,  
AND THE NW CORNER OF LOT 6 PER THE  
DEPENDENT RESURVEY AND SUBDIVISION OF  
SECTION 2, T5N, R84W  
FOUND 2 1/2" ALUMINUM PIPE  
W/ 3/4" ALUMINUM CAP  
STAMPED "BLM, 1982"

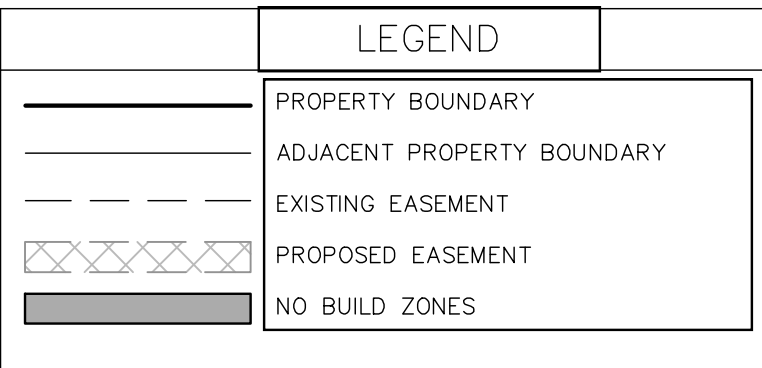
Curve #	Length	Radius	Delta	Chord Direction	Chord Length
C13	198.70	720.00	15.81	S84° 37' 29"W	198.07
C14	135.48	260.00	29.86	N72° 32' 29"W	133.95
C19	11.30	300.00	2.16	N28° 18' 41"W	11.30
C20	137.66	225.00	35.06	S44° 45' 34"E	135.52
C21	137.66	225.00	35.06	S44° 45' 34"E	135.52
C22	30.60	127.00	13.81	N55° 23' 03"W	30.53
C23	48.54	127.00	21.90	N37° 31' 55"W	48.25
C25	51.06	127.00	23.04	N15° 03' 53"W	50.72
C26	40.27	127.00	18.17	N5° 32' 11"E	40.10
C27	64.83	127.00	29.25	S0° 00' 15"E	64.13
C29	147.88	140.00	60.52	N15° 37' 58"E	141.10
C30	79.43	275.00	16.55	N70° 17' 02"E	79.16
C31	30.00	150.00	11.46	S72° 49' 46"W	29.95
C32	270.84	127.00	122.19	S9° 48' 48"W	222.36
C33	8.44	127.00	3.81	N69° 00' 14"E	8.44
C34	39.14	127.00	17.66	S60° 06' 36"E	38.99
C35	314.84	218.58	82.53	N27° 40' 32"W	288.32
C36	196.07	127.00	88.46	S30° 38' 23"E	177.17
C37	150.53	200.00	43.12	N53° 18' 23"W	147.00
C38	92.39	200.00	26.47	N18° 30' 42"W	91.57

Curve #	Length	Radius	Delta	Chord Direction	Chord Length
C39	154.08	134.86	69.71	S40° 08' 03"E	154.15
C40	141.38	127.00	63.78	N43° 05' 58"W	134.19
C41	24.77	275.00	5.16	N59° 25' 44"E	24.76
C42	98.99	275.00	20.62	N51° 41' 50"E	98.45
C43	78.56	250.00	18.00	N24° 10' 45"W	78.23
C44	64.87	500.00	7.43	N11° 27' 38"W	64.82
C46	94.58	60.00	90.32	S83° 15' 24"W	85.09
C47	15.67	60.00	14.97	S59° 03' 55"E	15.63
C48	56.49	60.00	53.95	N39° 34' 28"W	54.43
C49	44.84	60.00	42.82	S34° 00' 39"E	43.80
C50	158.40	60.00	151.26	N49° 25' 17"E	116.24

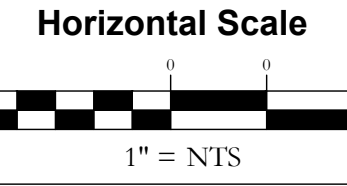
Line #	Length	Direction
L1	60.67	N50° 37' 11"E
L2	80.53	N20° 41' 57"W
L3	107.25	N71° 11' 23"W
L4	192.98	N89° 20' 37"W
L6	53.25	S37° 30' 47"W
L7	53.08	S42° 38' 48"W
L8	62.79	N75° 32' 10"W
L9	46.05	N37° 34' 51"W
L10	89.18	N08° 29' 07"W
L11	55.55	N35° 57' 06"W
L12	49.34	S66° 26' 55"E
L13	84.45	N72° 53' 31"E
L14	55.80	N88° 22' 21"E
L15	83.55	N13° 50' 08"E
L16	48.91	N20° 31' 44"E
L17	72.71	N78° 54' 21"E
L18	44.14	N72° 57' 13"E
L19	28.11	S65° 39' 12"E
L20	57.10	N51° 29' 33"E
L21	59.37	N01° 00' 19"E
L22	102.42	N01° 00' 19"E
L23	139.76	S78° 09' 07"W
L24	61.26	S84° 25' 14"W
L25	85.36	S66° 31' 01"W
L26	168.22	S79° 07' 46"W

Line #	Length	Direction
L27	130.86	S85° 23' 56"W
L28	64.69	S66° 23' 03"W
L29	113.13	N77° 43' 28"E
L30	53.64	N42° 42' 29"E
L31	78.05	N29° 03' 12"E
L32	28.77	N18° 26' 05"W
L33	73.54	N08° 17' 48"E
L34	99.51	N03° 00' 40"W
L35	30.16	N01° 31' 14"E
L36	115.19	N18° 02' 49"W
L37	50.55	N15° 06' 45"E
L38	46.01	N03° 05' 28"W
L39	100.02	N14° 37' 48"W
L40	62.21	N26° 34' 57"W
L50	152.33	S73° 27' 04"E
L51	154.04	N38° 14' 26"E
L52	137.87	N82° 17' 42"E
L53	121.24	N37° 42' 18"E
L54	72.09	N17° 21' 40"W
L55	48.32	N61° 46' 44"W
L56	54.24	N18° 08' 12"W
L57	69.00	N53° 33' 06"E
L58	38.59	N02° 27' 33"E
L59	133.76	S77° 44' 10"W
L60	20.76	N75° 43' 10"W

Line #	Length	Direction
L61	121.68	N29° 16' 49"W
L62	179.27	N79° 16' 34"E
L63	66.68	N29° 59' 11"E
L64	306.43	S78° 33' 57"W
L65	57.91	S54° 16' 19"E
L66	152.03	S73° 14' 23"W
L67	81.80	S50° 31' 28"W
L68	119.73	S23° 28' 07"E
L69	132.18	S50° 15' 07"E
L70	176.18	N63° 53' 12"E
L71	231.87	N43° 33' 36"E
L72	49.33	N01° 00' 19"E



ALPINE MOUNTAIN RANCH  
L.P.S.E. - AMENDMENT NO. 7



Contour Interval = 2 ft  
DATE: 4-9-2022  
JOB #: 1147-001  
DRAWN BY: WNM  
DESIGN BY:  
REVIEW BY:

IF THIS DRAWING IS PRESENTED IN A  
FORMAT OTHER THAN 24" X 36", THE  
GRAPHIC SCALE SHOULD BE UTILIZED.

FINAL PLAT

DRAWING:  
SHEET #

4