



Emerald Mountain Surveys, Inc.
Professional Land Surveying
380 BEARVIEW CT
Steamboat Springs, Colorado 80487
(970) 879-8998 bear@emeraldmtn.net

Routt County Planning
136 6th Street, 2nd Floor
Steamboat Springs, Co. 80487

RE: ASPEN HEIGHTS SUBDIVISION FILING 9

NARRATIVE TO VACATE EASEMENTS
August 4, 2022

BOLA ENTERPRISE, INC., and James "Bear" Ackerman (acting representative) are requesting your approval creation of ASPEN HEIGHTS SUBDIVISION FILING 9, and also to vacate the 10 foot wide public utility and drainage easements located on each side of the common interior lot lines.

The plan is to take the existing platted A Replat of Lots 23, 24, 25, 26, 27, 28, 29, 30, 31, 32, 33, 37, 38, 39, 40, 124, 125, 159, 169, 168, 203, 204, 205, 207 and 208 Steamboat Lake Subdivision, Filing No. 7, and East Parcel 'G', Aspen Heights Subdivision Filing No. 2 and Outlot 'A' and Outlot 'F', Aspen Heights Subdivision Filing No. 6 Located in portions of Sections 28 & 29, Township 10 North, Range 85 West of the 6th P.M., Routt County, Colorado, to a two lots of ASPEN HEIGHTS SUBDIVISION FILING 9 (see attached map)

Sincerely,
James "Bear" Ackerman, Colorado RLS#16394
President Emerald Mountain Surveys, Inc.
380 Bearview Ct
Steamboat Springs, Co. 80487 970-879-8998 emeraldmtn01@gmail.com

A Record of Lots 23, 24, 25, 26, 27, 28, 29, 30, 31, 32, 33, 37, 38, 39, 40, 124, 125, 159, 169, 168, 203, 204, 205, 207 and 208 Steamboat Lake Subdivision, Filing No. 7,
and East Parcel 'b', Aspen Heights Subdivision Filing No. 2, and Outlot 'a' and
Outlot 'c', Aspen Heights Subdivision Filing No. 8
Located in portions of Sections 28 & 29,
Township 10 North, Range 85 West of the 6th P.M.,
Routt County, Colorado

Page 11

active

1

EASEMENTS ON ALL NEW LOTS

15' PUBLIC UTILITY DRAINAGE, SNOW REMOVAL
AND SNOW STORAGE EASEMENT
PRINTING ON RECORDS (179)

10' PUBLIC UTILITY EASEMENTS
ON ALL BACK AND SIDE LOT LOTS

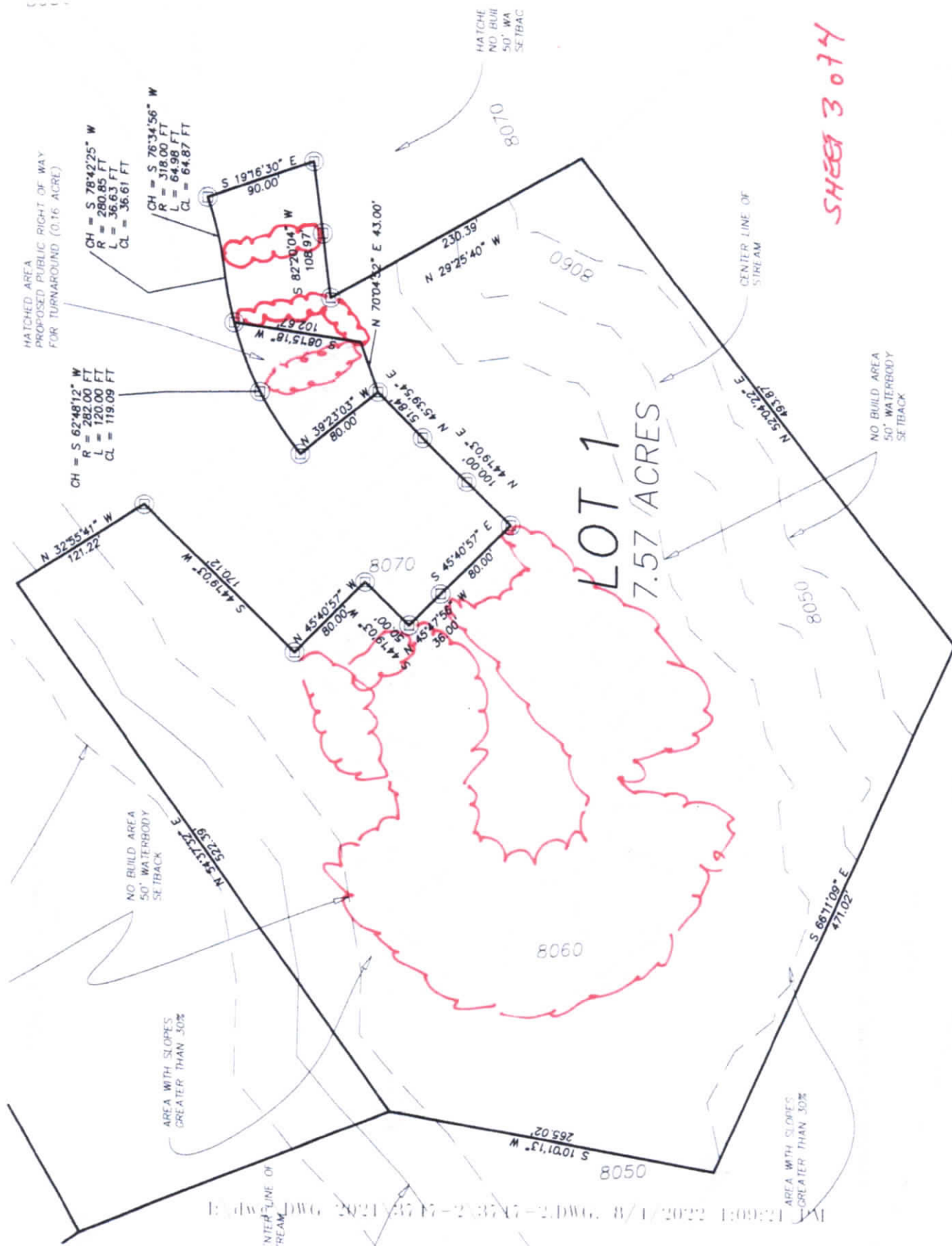
SPRINT 2024

[illegible]

Edw g DWG 2021\3747-2\3747-2DWG, 8/1/2022 1:03:02 PM

11:02 PM

AREA WITH SLOPES
GREATER THAN 30%



SHOES 4074

60 FEET
Public Access
(Antelope w)



ARC LENGTH	CHORD LENGTH
68.21	68.97
58.23	58.09
65.13	64.65
343.70	225.51
97.40	97.13
32.69	32.67