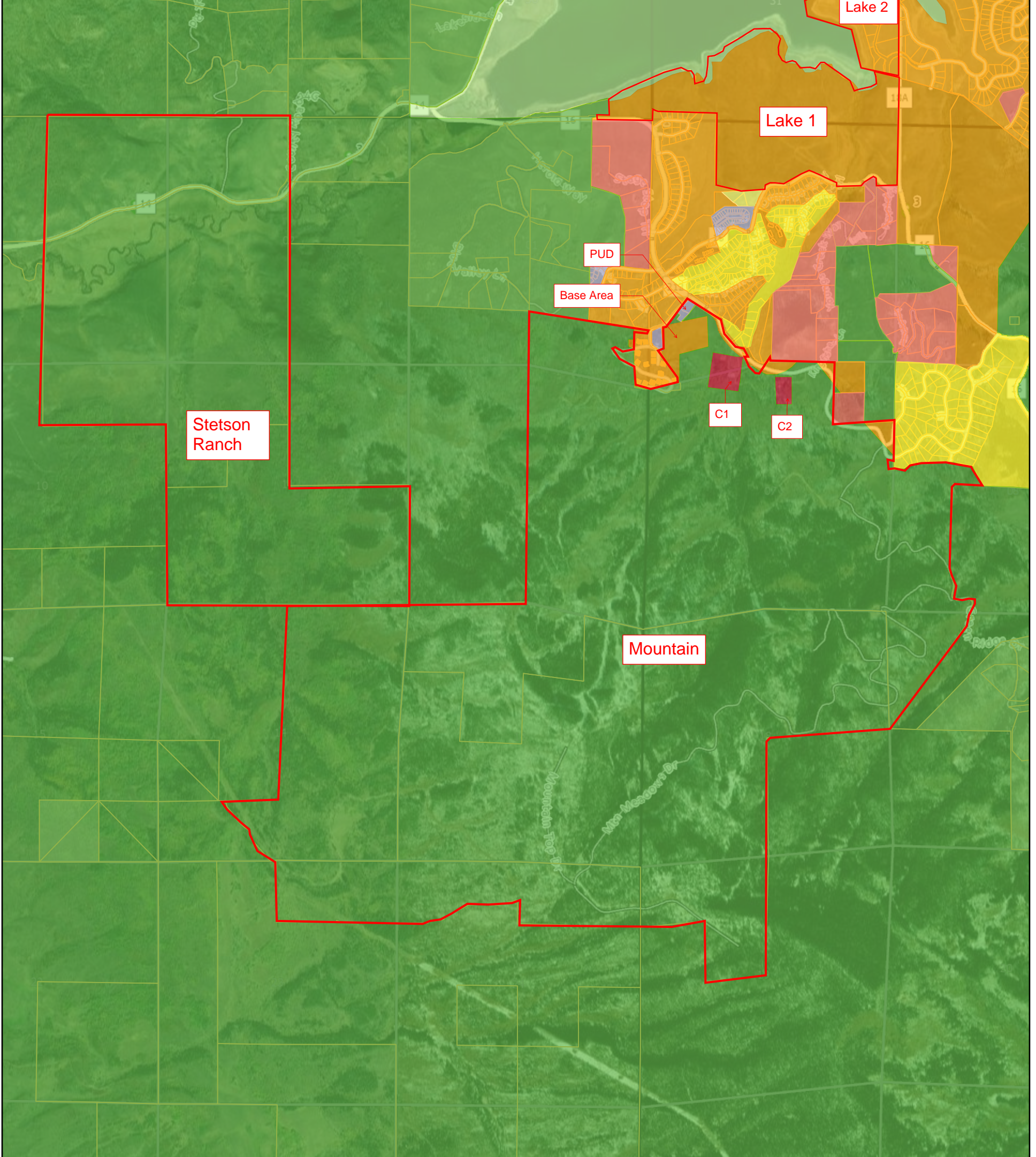


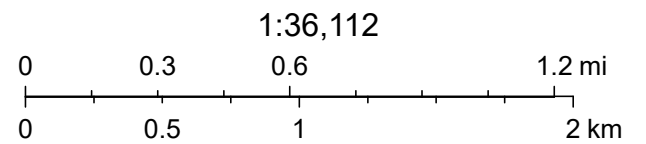
My Map in Routt County

Stagecoach Existing Entitlements				
Parcels	Acres	Zoning	Density/Acre	Total Units
Base Area	15	HDR	14.52	218
C1*	10	Commercial	14.52	145
C2*	5	Commercial	14.52	73
PUD	2	PUD	14.52	31
Mountain	3,547	Ag/Forest	0.029	101
Stetson Ranch	830	Ag/Forest	0.029	24
Lake 1	306	HDR	14.52	4,443
Lake 2	28	HDR	14.52	399
Total	4,742			5,434



12/8/2022, 11:58:05 AM

- Routt County Boundary
- Parcels
- Subdivisions
- Subdivisions
- Townhomes
- Condos
- Zoning Districts
- Agriculture and Forestry
- Commercial
- General Residential
- High Density Residential
- Low Density Residential
- Mountain Residential Estates
- Outdoor Recreation
- Planned Unit Development
- Parcels for mailing addresses
- Roads - Routt County and Towns
- Primary Public Road
- Local Public Road
- Private
- Sections
- Township
- Mile Markers



Source: Esri, Maxar, Earthstar Geographics, and the GIS User Community

Routt County GIS User

Source: Esri, DigitalGlobe, GeoEye, Earthstar Geographics, CNES/Airbus DS, USDA, USGS, AeroGRID, IGN, and the GIS User Community | Source: Esri, USDA FSA | County of Routt, Esri, HERE,